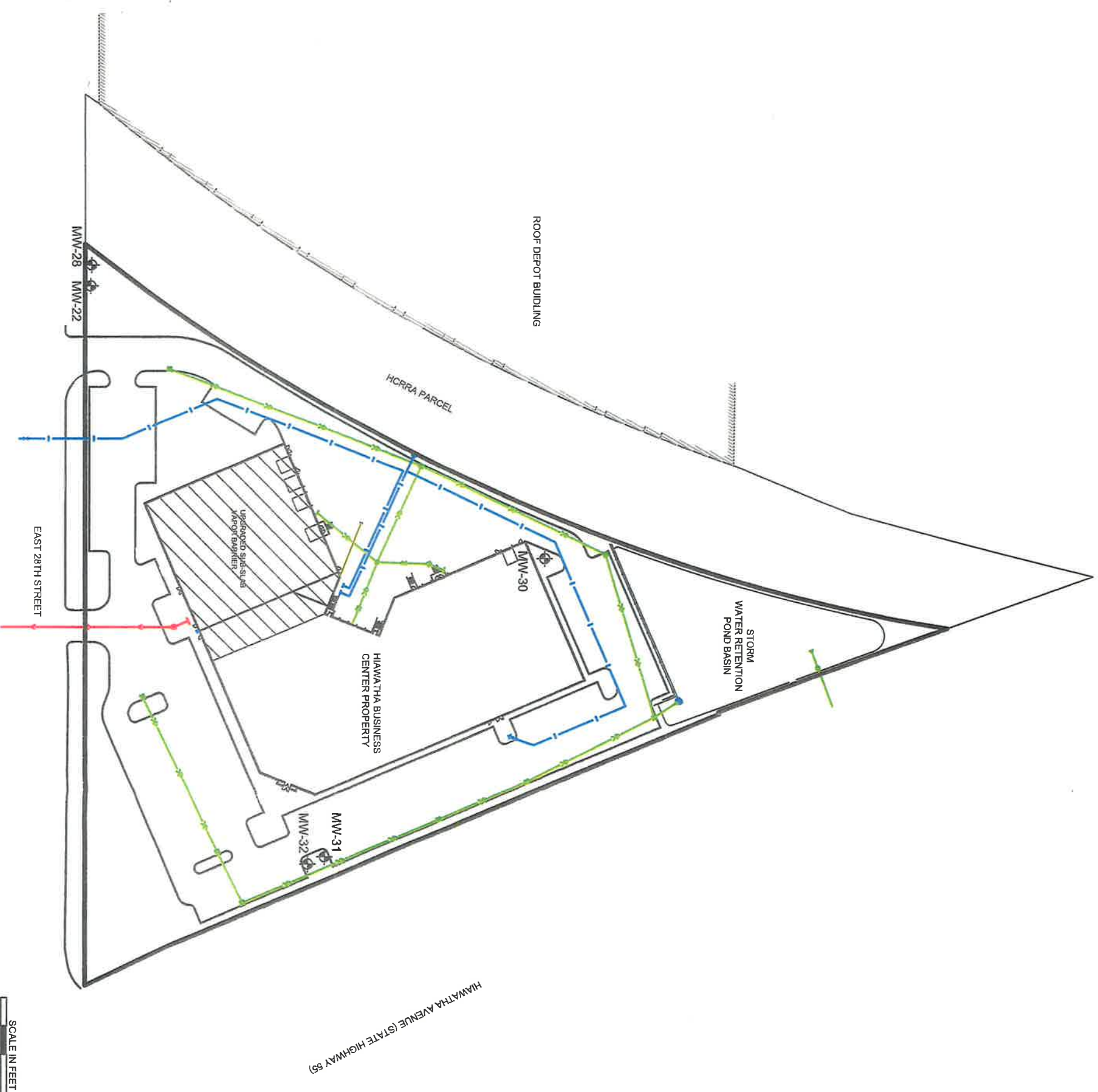


LEGEND

-  EXISTING MONITORING WELL
-  WATER LINE
-  STORM SEWER LINE
-  SANITARY SEWER LINE



BASED ON RYAN COMPANIES US, INC. SHEET NO. C4-UTILITY PLAN.
 REVISION 3, 9-22-05, AS REVISED BY PEER ENGINEERING, JULY 6, 2006.

52533.S31R4P Implementation report\52533_53 as built site plan.dwg

 Peer Engineering	PROJECT #: 52533.53
	AS-BUILT SITE PLAN
HIAWATHA BUSINESS CENTER 2020 EAST 28TH STREET MINNEAPOLIS, MINNESOTA	JULY 2006
FIGURE 3	

City of Minneapolis
Asphalt Batch Plant Facility

Roof Depot Building

HCRRA Parcel
Property Boundary

Former 2000 E. 28th Street
Building

Rollins Oil Company
Facility

Former 2100 E. 28th Street Building

Reade Manufacturing/
U.S. Borax Facility

Lite Yard Property

Former Oil
Warehouse

Former AST Area

Soil Berm
(5 feet high)

East 28th Street

HIAMATHA AVENUE (STATE HIGHWAY 55)

Pre-May 1998
East Property Boundary

Cross-Hatched Area Acquired
by MNDOT in May 1998

Post-May 1998
East Property Boundary

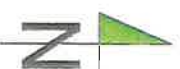
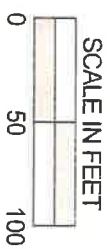
20th Avenue S.

21st Avenue S.
(Historical Alignment)

21st Avenue S.
(Current Alignment)

Former
Layman Avenue

LEGEND
Former Aboveground Storage Tank



NOTE: FIGURE MODIFIED FROM FIGURE 3 OF "ADDITIONAL INVESTIGATION, CMC HEARTLAND PARTNERS LITE YARD SITE, EAST 28TH STREET AND STATE HIGHWAY 55, MINNEAPOLIS, MINNESOTA, MDA SITE ID# 95-0100", AUGUST 14, 1998, PREPARED BY PEER.

HISTORICAL LAND USE

JULY 2006

HIAMATHA BUSINESS CENTER
2020 EAST 28TH STREET
MINNEAPOLIS, MINNESOTA

FIGURE
4



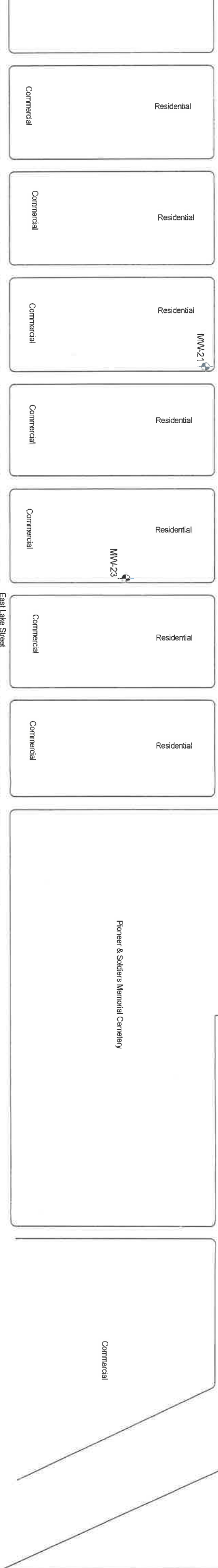
PROJECT # 5253.53

5253.53/PAE Implementation report/5253.53 Historical Land Use SIF

Monitoring Well Status Summary
Wells Related to Former CMC Life Yield Site
Minneapolis, Minnesota


Well No.	Unique Well No.	Status	Date Sealed (if applicable)
MMW-1	576216	Sealed	10/9/2004
MMW-2	576217	Sealed	10/9/2004
MMW-3	576218	Sealed	11/6/1998
MMW-4	576219	Sealed	10/9/2004
MMW-4A	576176	Sealed	10/9/2004
MMW-6	490364	Sealed	12/31/1998
MMW-7	490365	Sealed	12/31/1998
MMW-8	490366	Sealed	12/31/1998
MMW-9	490367	Sealed	12/31/1998
MMW-10	478998	Removed	5/6/2005
MMW-11	478999	Sealed	12/31/1998
MMW-12	590842	Sealed	12/31/1998
MMW-13	576177	Sealed	10/9/2004
MMW-14	576178	Sealed	10/9/2004
MMW-15	576175	Sealed	10/9/2004
MMW-16	576179	Sealed	9/2/12000
MMW-16R	598675	Active	NA
MMW-17	594026	Active	NA
MMW-17A	584027	Active	NA
MMW-18	594029	Active	NA
MMW-18C	668821	Active	NA
MMW-18D	608679	Active	NA
MMW-19	594028	Active	NA
MMW-20	598239	Active	NA
MMW-21	598240	Active	NA
MMW-22	608680	Active	NA
MMW-23	608678	Active	NA
MMW-24D	635438	Sealed	8/23/2001
MMW-25D	668818	Sealed	4/14/2005
MMW-25E	668819	Sealed	4/14/2005
MMW-26D	668820	Sealed	11/2/2005
HCMMW-1	532263	Sealed	8/6/2003
HCMMW-2	532264	Sealed	8/6/2003
HCMMW-3	532265	Sealed	1/17/2002
MMW-27	701960	Active	NA
MMW-27C	701959	Active	NA
MMW-28	733214	Active	NA
MMW-29	733213	Active	NA
MMW-30	733215	Active	NA
MMW-31	733217	Active	NA
MMW-32	733216	Active	NA

NOTES:
NA Not Applicable
MDH Minnesota Department of Health
1 Water Table Aquifer
2 Base of Water Table Aquifer
3 Platteville Limestone Aquifer
4 St. Peter Sandstone Aquifer



Commercial	Commercial	Commercial	Commercial	Commercial	Commercial	Commercial	Commercial	Commercial	Commercial	Commercial	Commercial	Commercial	Commercial	Commercial	Commercial
Residential	Residential	Residential	Residential	Residential	Residential	Residential	Residential	Residential	Residential	Residential	Residential	Residential	Residential	Residential	Residential
Commercial	Commercial	Commercial	Commercial	Commercial	Commercial	Commercial	Commercial	Commercial	Commercial	Commercial	Commercial	Commercial	Commercial	Commercial	Commercial

5253 53924P Implementation report 5253 53 historical mw locations SHF



Peer Engineering

HISTORIC AND EXISTING ON-SITE AND RELATED MONITORING WELL LOCATIONS

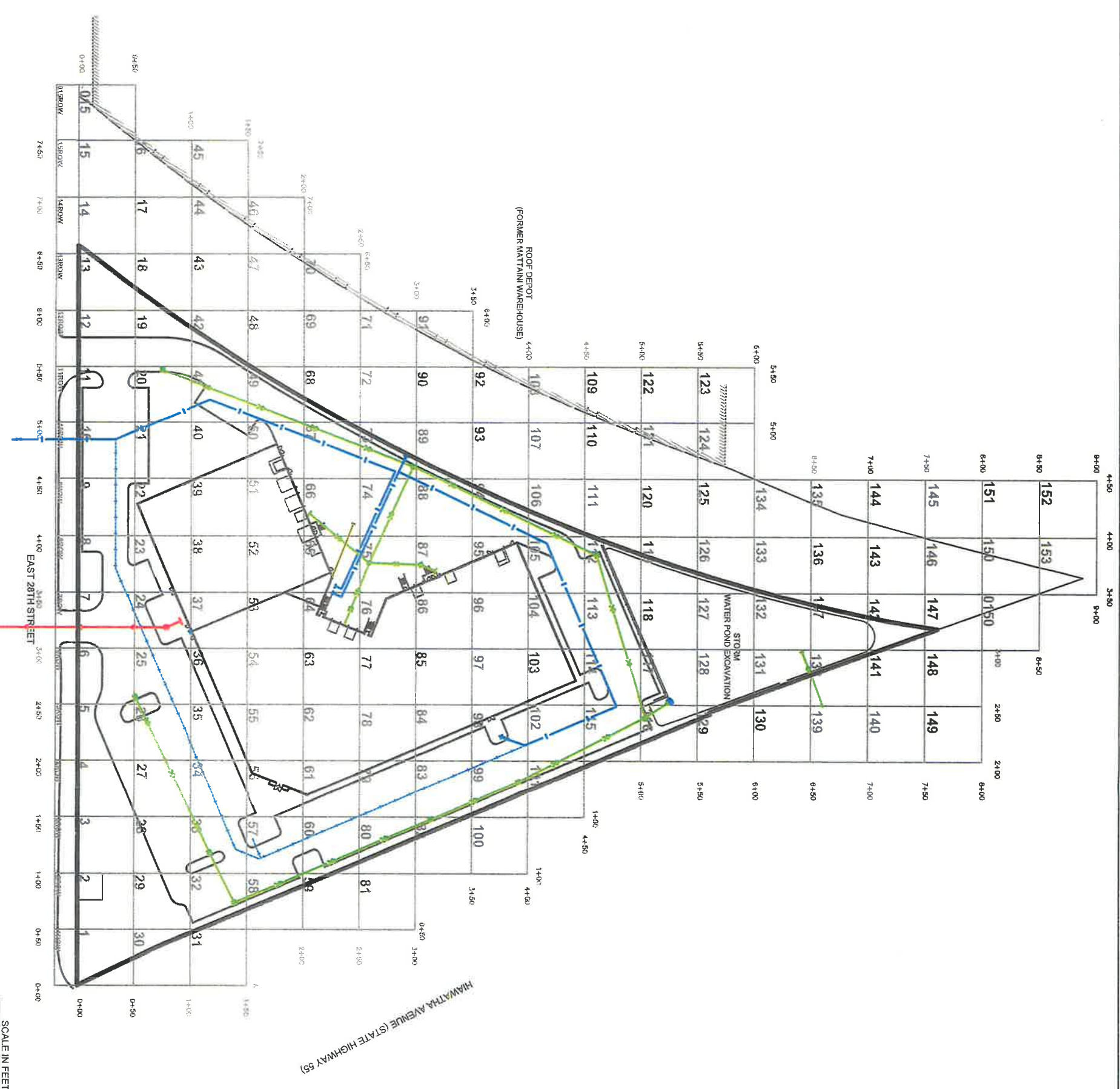
HAWATHA BUSINESS CENTER
2020 EAST 28TH STREET
MINNEAPOLIS, MINNESOTA

JULY 2005

FIGURE 5


LEGEND

-  EXCAVATION FOR PROPOSED WATER LINE
-  EXCAVATION FOR CONSTRUCTED WATER LINE
-  STORM LINE EXCAVATION
-  SANITARY LINE EXCAVATION
-  GRID NUMBER



BASED ON RYAN COMPANIES US, INC. SHEET NO. C2-SITE PLAN,
 REVISION 1, 8-1-05, AS REVISED BY PEER ENGINEERING, JULY 6, 2006

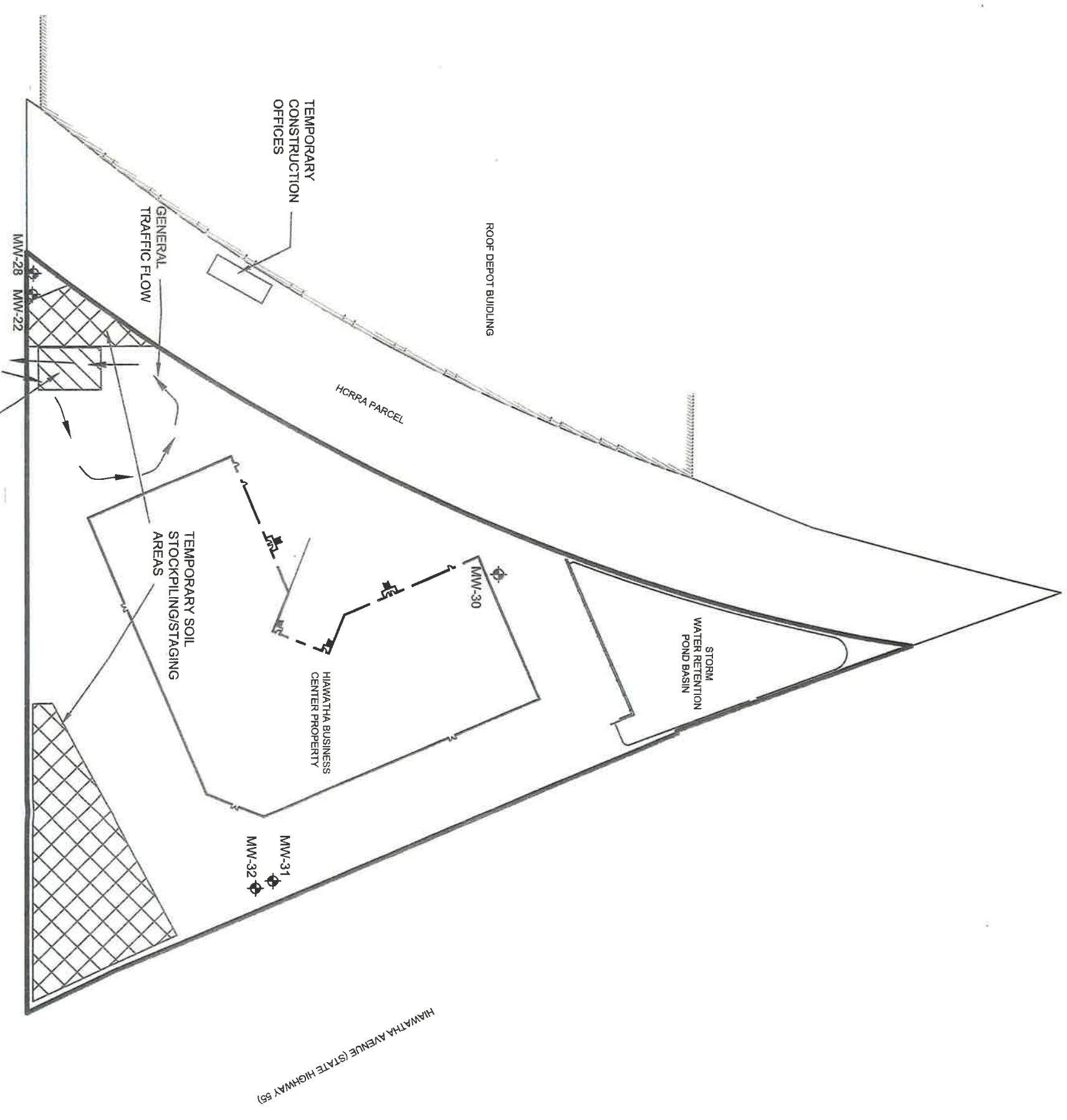


 PROJECT #: 5253.07	GRID SYSTEM	JULY 2006
	HAWATHA BUSINESS CENTER 2020 EAST 28TH STREET MINNEAPOLIS, MINNESOTA	FIGURE 6

LEGEND



EXISTING MONITORING WELL



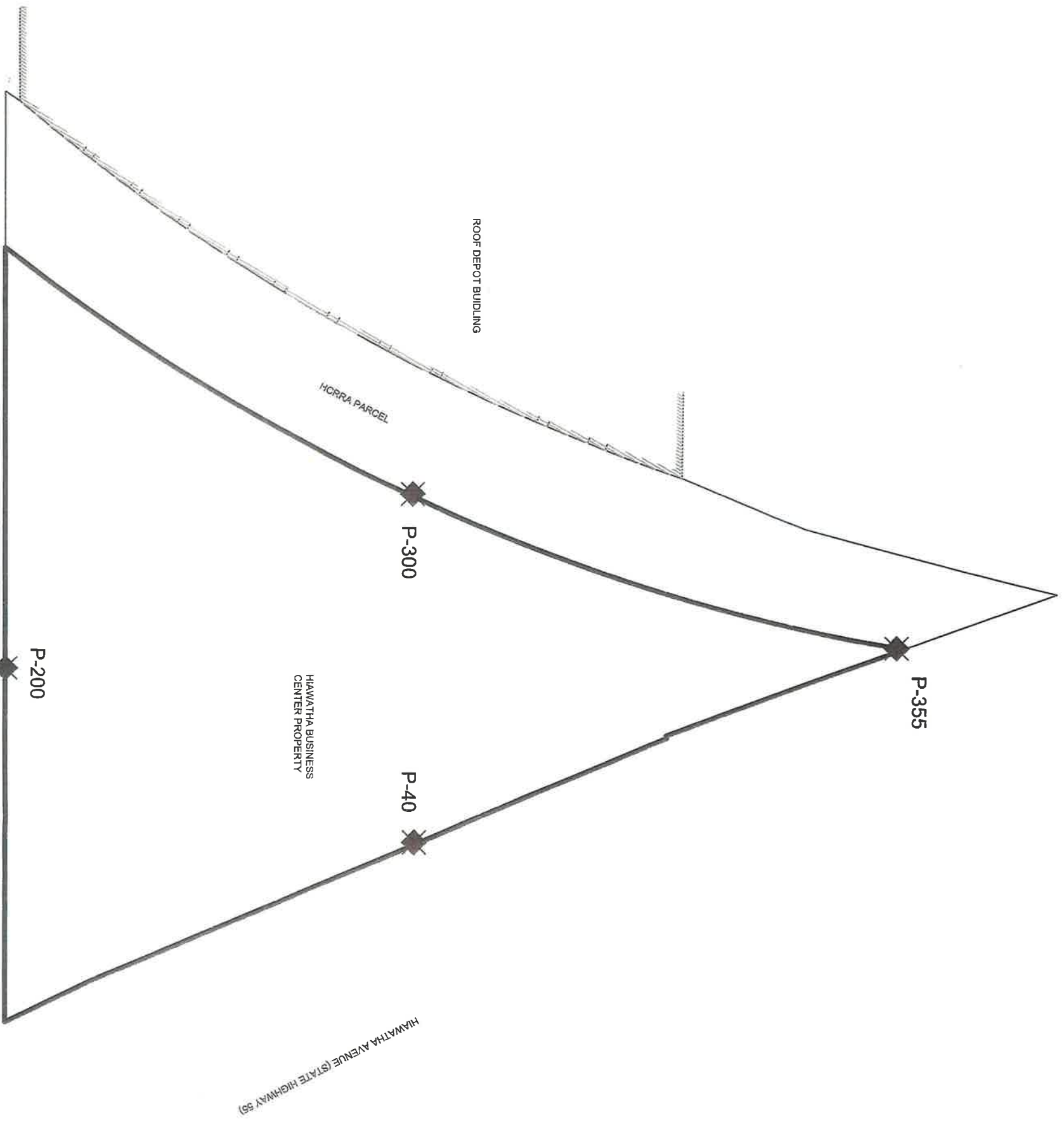
BASED ON RYAN COMPANIES US, INC. SHEET NO. CA UTILITY PLAN, REVISION 3, 8-22-05, AS REVISED BY PEER ENGINEERING, JULY 6, 2006.

5253.53R4P Implementation report\5253.53 as built site plan.dwg

 <p>Peer Engineering</p> <p>PROJECT #: 5253.53</p>	WORK ZONES	JULY 2006
	<p>HIAMATHA BUSINESS CENTER 2020 EAST 28TH STREET MINNEAPOLIS, MINNESOTA</p>	FIGURE 7

LEGEND

◆ AIR MONITORING LOCATION









EAST 28TH STREET

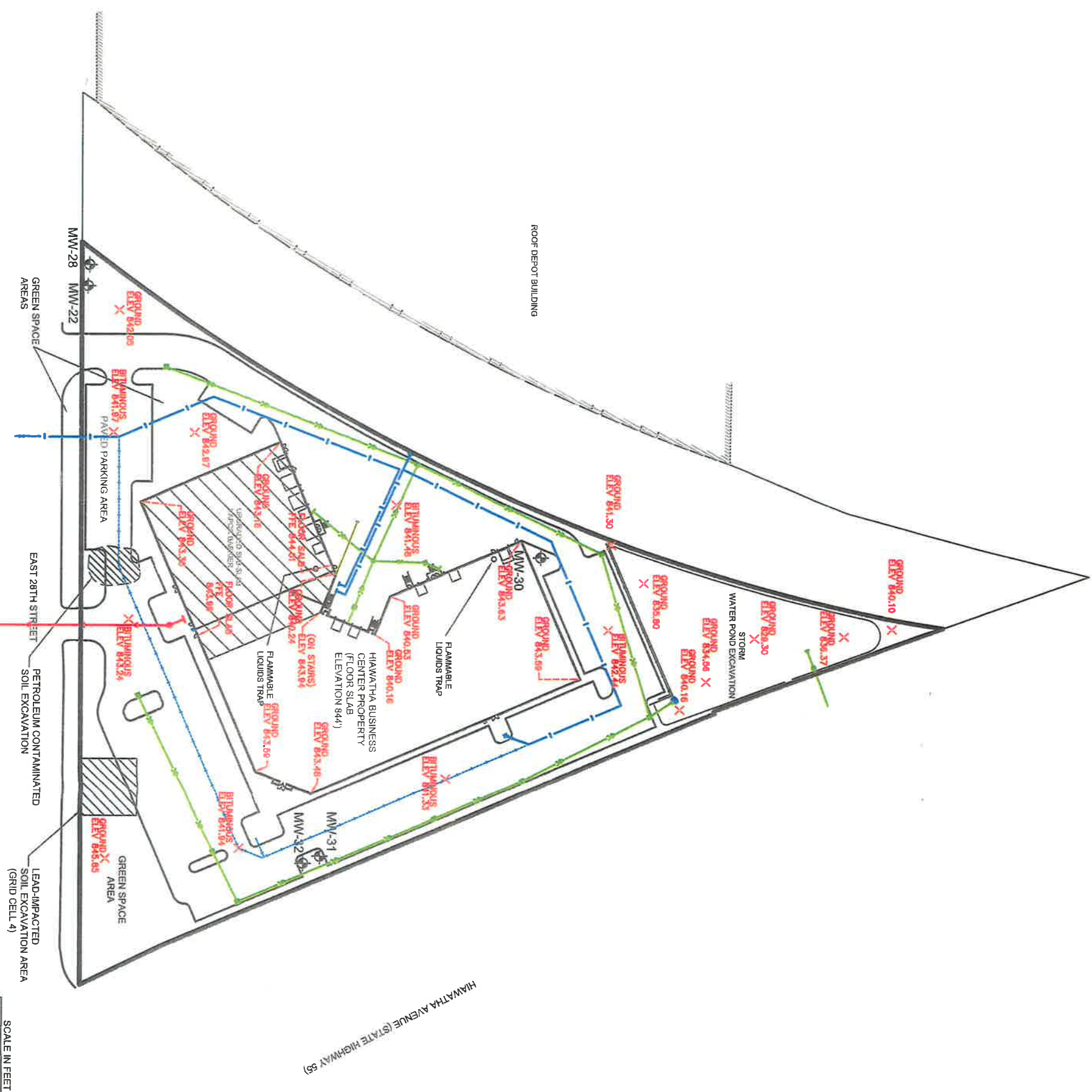


BASED ON RYAN COMPANIES US, INC. SHEET NO. CA-UTILITY PLAN,
 REVISION 3, 8-22-05, AS REVISED BY PEER ENGINEERING, JULY 6, 2006.

5253_531R4E Implementation report\5253_53 as built site plan.dwg

	PERIMETER AIR MONITORING LOCATIONS	JULY 2006
	HAWATHA BUSINESS CENTER 2020 EAST 28TH STREET MINNEAPOLIS, MINNESOTA	FIGURE 8

LEGEND	
	EXISTING MONITORING WELL
	EXCAVATION FOR PROPOSED WATER LINE
	EXCAVATION FOR CONSTRUCTED WATER LINE
	STORM LINE EXCAVATION
	SANITARY LINE EXCAVATION
	FINISHED DEVELOPMENT GRADE ELEVATION (I.E. TOP OF BUILDING FLOOR SLAB, TOP OF PAVEMENT OR GROUND SURFACE) AS SURVEYED BY WESTWOOD PROFESSIONAL SERVICES ON JANUARY 30, 2006.

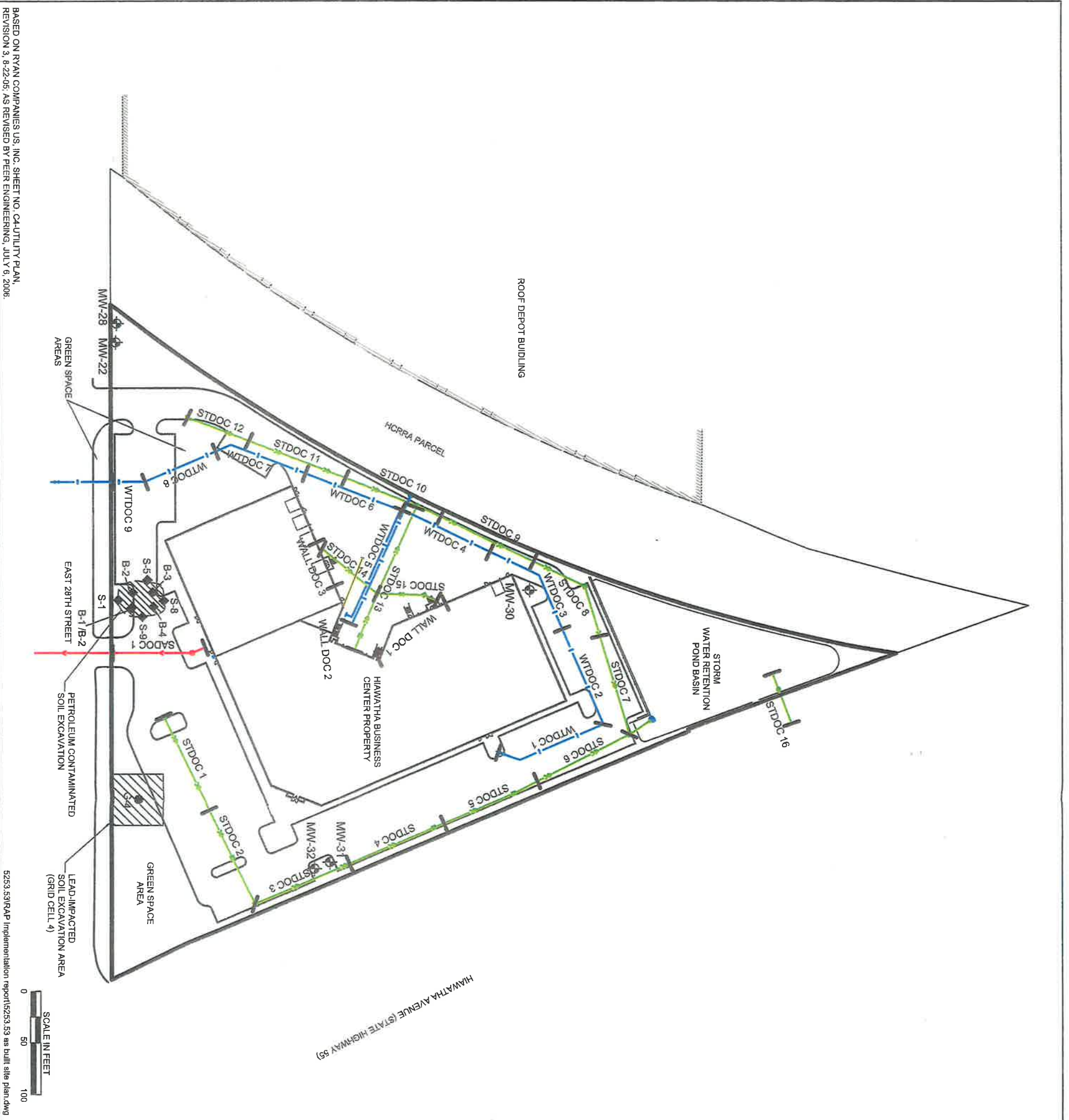


BASED ON RYAN COMPANIES US, INC. SHEET NO. C4-UTILITY PLAN, REVISION 3, 8-22-05;
AS REVISED BY PEER ENGINEERING, JULY 6, 2006.



5253.53IRAP Implementation report\5253.53 excavation areas.dwg

	PROJECT #: 5253.53
	DEVELOPMENT EXCAVATION AREAS
HIWATHA BUSINESS CENTER 2020 EAST 28TH STREET MINNEAPOLIS, MINNESOTA	JULY 2006 FIGURE 9



BASED ON RYAN COMPANIES US, INC. SHEET NO. CA-UTILITY-PLAN, REVISION 3, 8-22-05, AS REVISED BY PEER ENGINEERING, JULY 6, 2006.

52533.S31R1AP Implementation report\52533_53 as built site plan.dwg

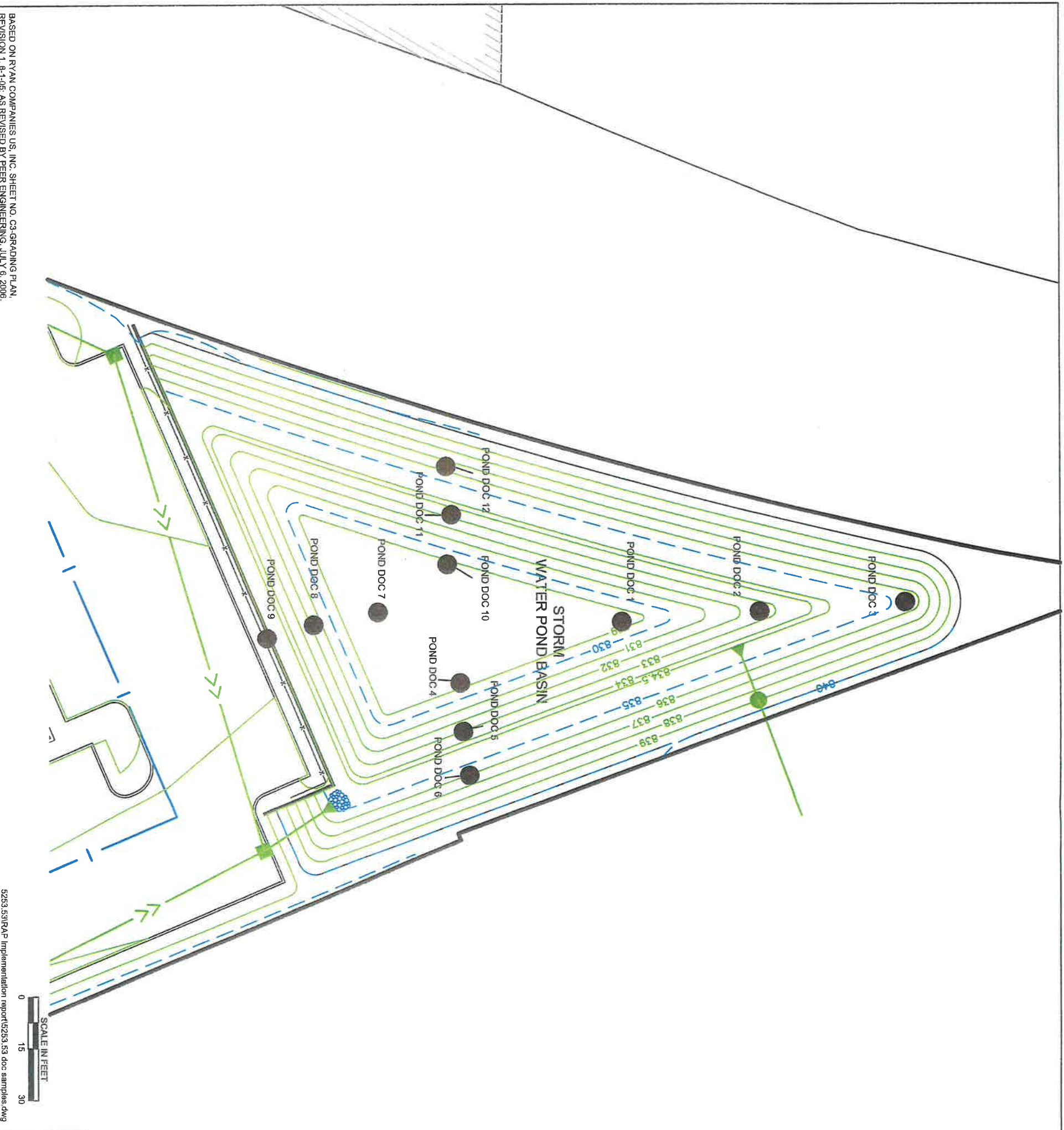


LEGEND	
	EXISTING MONITORING WELL
	WATER LINE
	STORM SEWER LINE
	SANITARY SEWER LINE
	MARKS THE ENDS OF A SAMPLE SECTION
	DOCUMENTATION SOIL SAMPLE*
	DOCUMENTATION SOIL SAMPLE**
	DOCUMENTATION SOIL SAMPLE***
* SAMPLES COLLECTED AS A FOUR PART COMPOSITE FROM THE BASE OF 100 FOOT SECTIONS OF THE UTILITY TRENCH.	
** SAMPLE COLLECTED AS A FOUR PART COMPOSITE FROM THE 50 FOOT BY 50 FOOT GRID.	
*** SAMPLES COLLECTED AS GRAB SAMPLES. ("B"= BASE SAMPLE, "S"= SIDEWALL SAMPLE)	

	SOIL DOCUMENTATION SAMPLES	JULY 2006
	HIAWATHA BUSINESS CENTER 2020 EAST 28TH STREET MINNEAPOLIS, MINNESOTA	FIGURE 10

LEGEND

● DOCUMENTATION SOIL SAMPLE



BASED ON RYAN COMPANIES US, INC. SHEET NO. C3-GRADING PLAN, REVISION 1, 9-1-05, AS REVISED BY PEER ENGINEERING, JULY 6, 2006.

5253.S31R1AP Implementation report\5253.53 doc samples.dwg

 <p>Peer Engineering</p> <p>PROJECT #: 5253.53</p>	<p>STORM WATER RETENTION POND DOCUMENTATION SAMPLES</p>	<p>JULY 2006</p>
	<p>HAWATHA BUSINESS CENTER 2020 EAST 28TH STREET MINNEAPOLIS, MINNESOTA</p>	<p>FIGURE 11</p>

