



- ▲ Lake and Hiawatha Site Monitoring Well
- △ Abandoned Lake and Hiawatha Site Monitoring Well
- M&H Site Monitoring Well
- Abandoned M&H Site Monitoring Well
- 826.01 Groundwater Elevation (Feet, MSL)
- [826.10] Groundwater Elevation (Feet, MSL) Corrected for Free Product
- Storm Sewer Alignment and Flow Direction
- Manhole
- ▤ Catch Basin

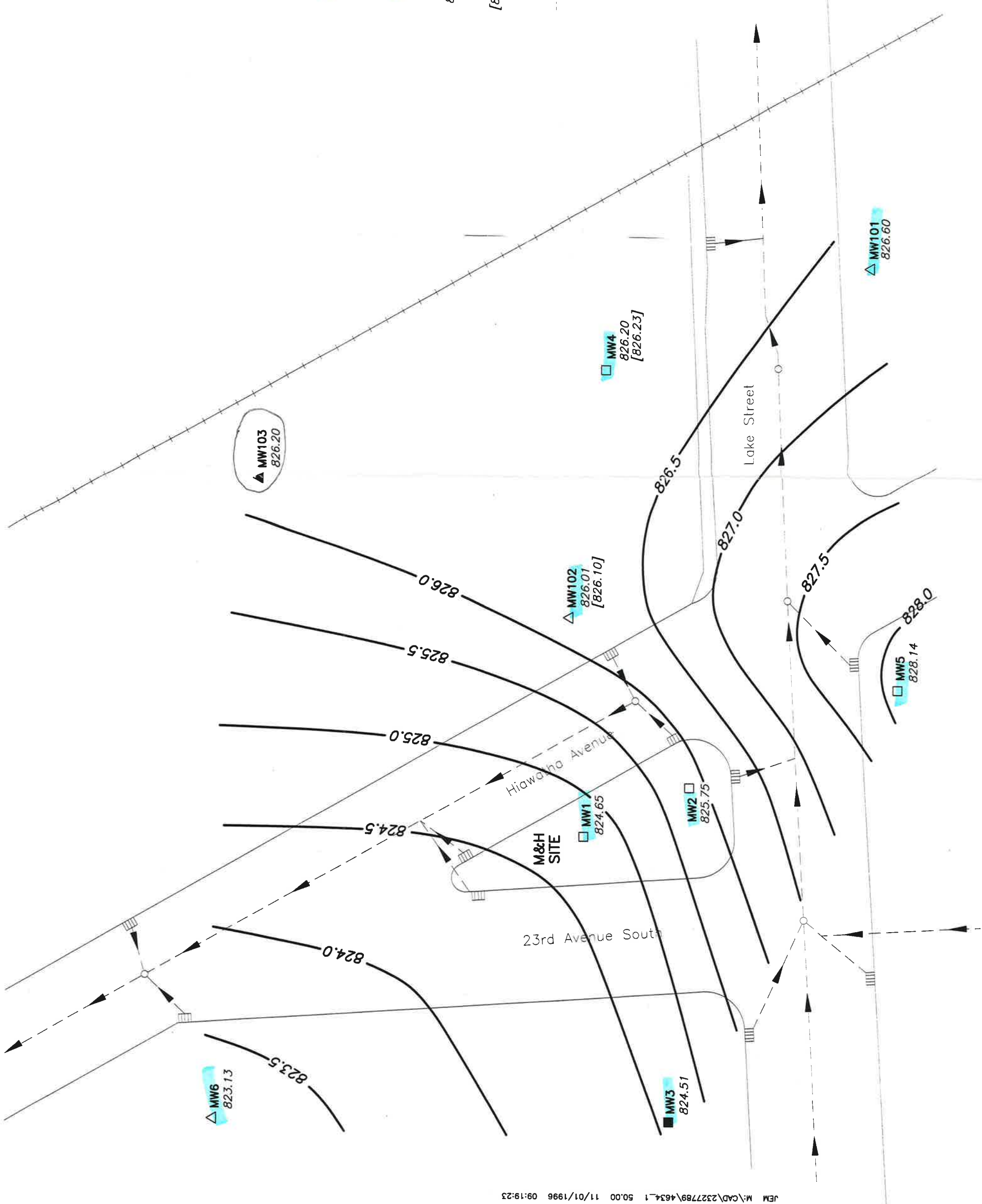


Figure 3  
 GROUNDWATER ELEVATIONS  
 APRIL 19, 1996  
 Lake & Hiawatha RI  
 Minneapolis, Minnesota