

AMERICAN ENGINEERING TESTING, INC.

CONSULTANTS
 • GEOTECHNICAL
 • ENVIRONMENTAL
 • MATERIALS

550 Cleveland Avenue North
 St. Paul, Minnesota 55114

Phone: 651-659-9001
 Fax: 651-659-1379
 Website: www.amengtest.com

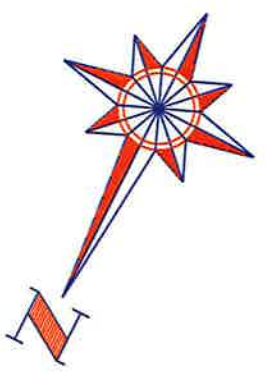


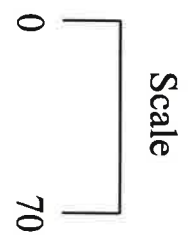
FIGURE 2

**Hiawatha Flats
 Minneapolis, Minnesota**

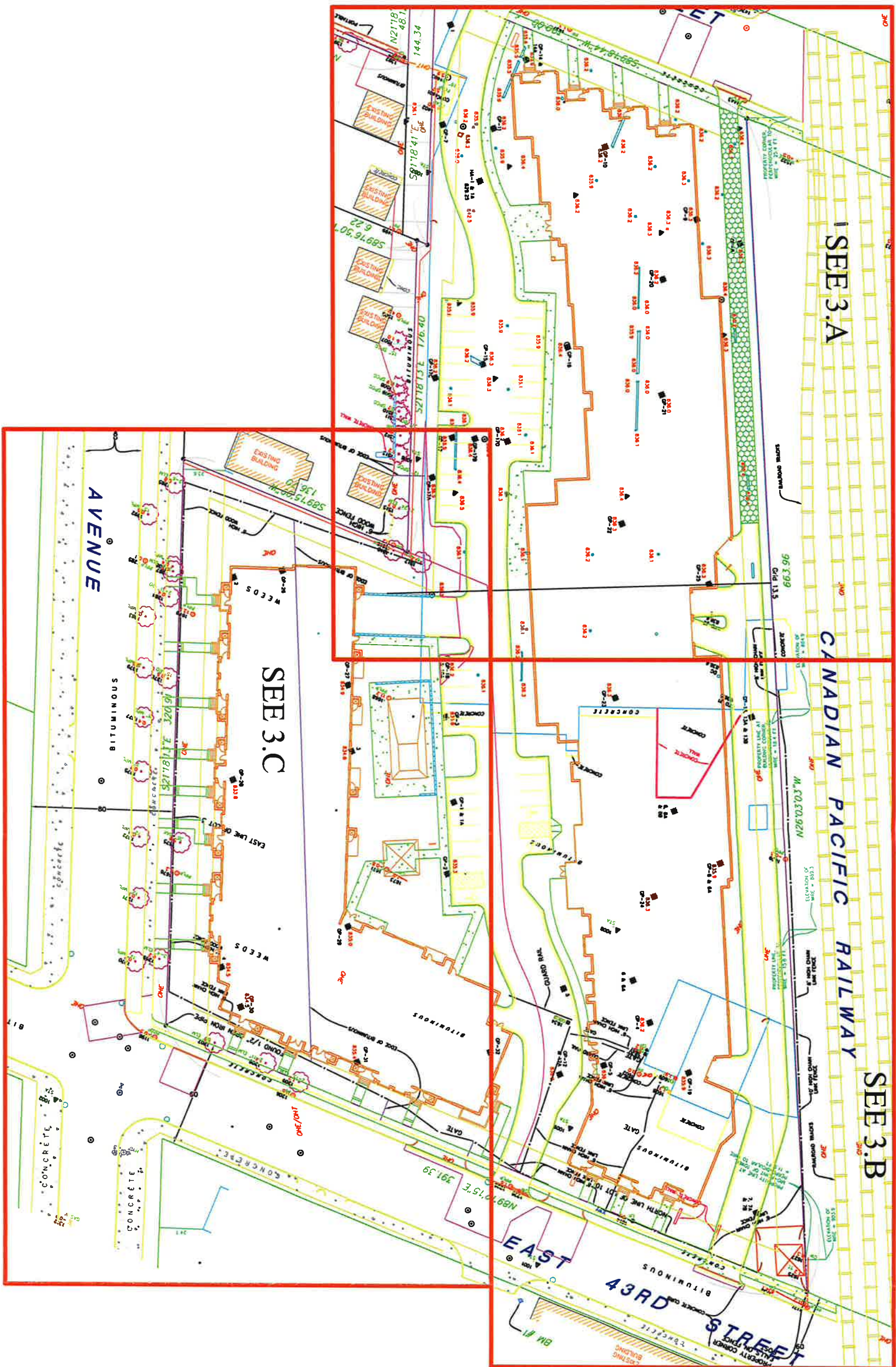
Pre-Development Site Plan

DRAWN BY: CHECKED BY:
 DATE: AET JOB NO. 03-02255

EXPLANATION:



REFERENCE:



AMERICAN ENGINEERING TESTING, INC.

550 Cleveland Avenue North
St. Paul, Minnesota 55114

Phone: 651-659-9001
Fax: 651-659-1379
Website: www.amengtest.com

CONSULTANTS

- GEOTECHNICAL
- ENVIRONMENTAL
- MATERIALS

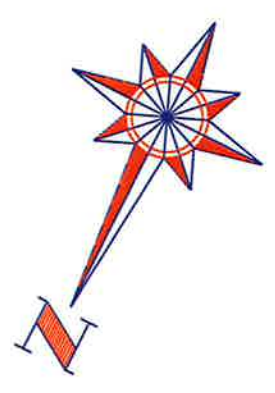


FIGURE 3

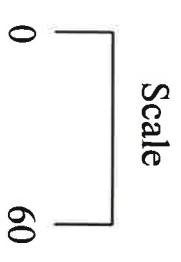
**Hiawatha Flats
Minneapolis, Minnesota**

Boring Location Plan

DRAWN BY: CHECKED BY:

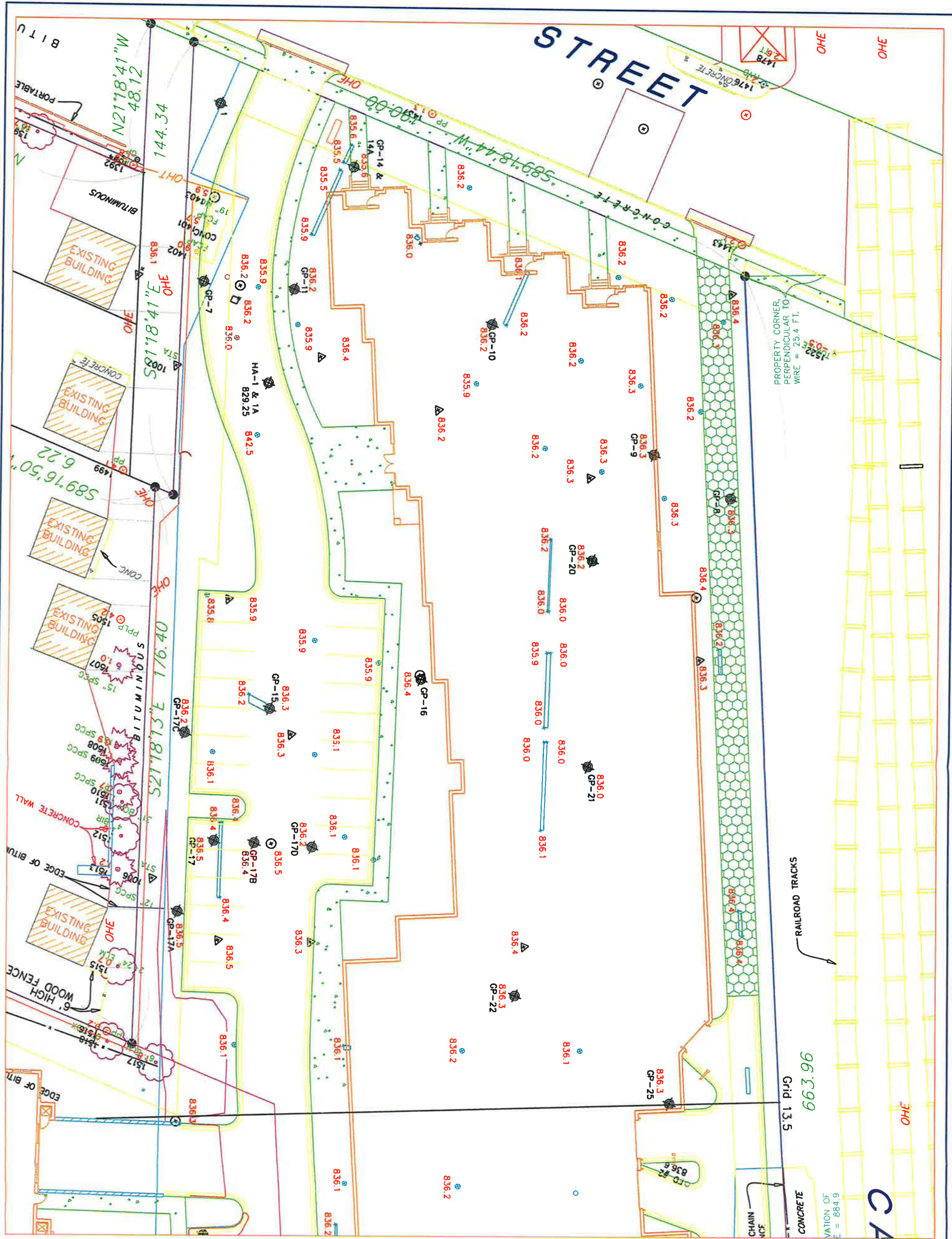
DATE: AET JOB NO. 03-02255

EXPLANATION:



- Boring
- ⊙ Circular Drain
- ⊙ Manhole
- Trench Drain

REFERENCE:



AMERICAN ENGINEERING TESTING, INC.
 CONSULTANTS
 • GEOTECHNICAL
 • ENVIRONMENTAL
 • MATERIALS

550 Cleveland Avenue North
 St. Paul, Minnesota 55114
 Phone: 651-659-9001
 Fax: 651-659-1379
 Website: www.amengtest.com

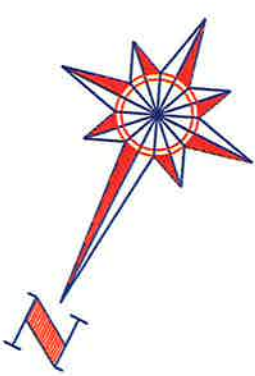


FIGURE 3.A

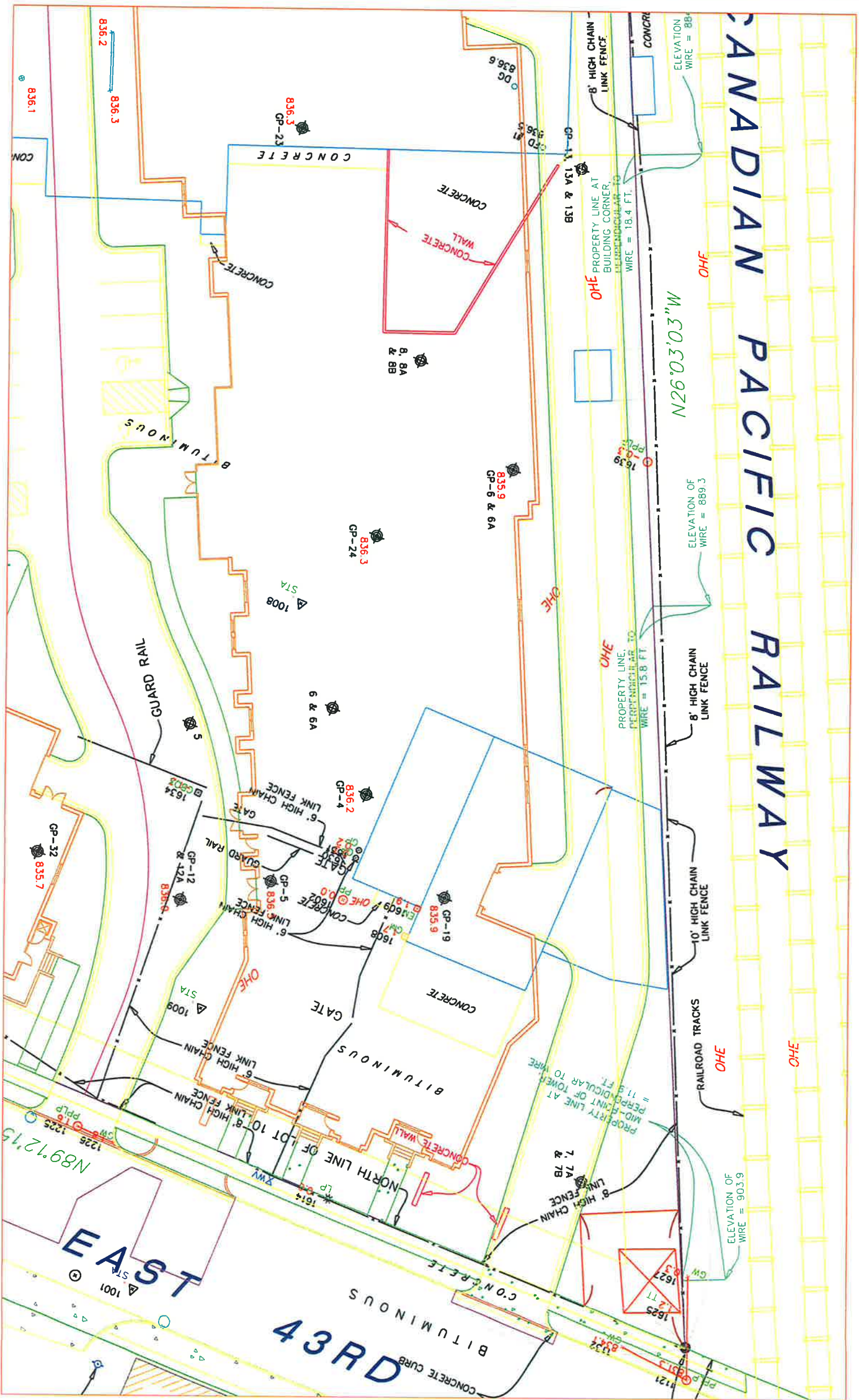
**Hiawatha Flats
 Minneapolis, Minnesota**

Boring Location Plan

DRAWN BY:	CHECKED BY:
DATE:	AET JOB NO. 03-02255

EXPLANATION:

- Scale 0 30
- Boring
 - Circular Drain
 - Manhole
 - Trench Drain
- REFERENCE:**



AMERICAN ENGINEERING TESTING, INC.
 CONSULTANTS
 • GEOTECHNICAL
 • ENVIRONMENTAL
 • MATERIALS

550 Cleveland Avenue North
 St. Paul, Minnesota 55114
 Phone: 651-659-9001
 Fax: 651-659-1379
 Website: www.amerengtest.com

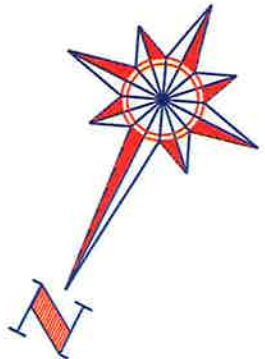


FIGURE 3.B

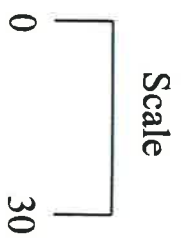
**Hiawatha Flats
 Minneapolis, Minnesota**

Boring Location Plan

DRAWN BY:	CHECKED BY:
DATE:	AET JOB NO. 03-02255

EXPLANATION:

- Boring
- Circular Drain
- Manhole
- Trench Drain



REFERENCE:



**AMERICAN
ENGINEERING
TESTING, INC.**

**CONSULTANTS
• GEOTECHNICAL
• ENVIRONMENTAL
• MATERIALS**

550 Cleveland Avenue North
St. Paul, Minnesota 55114

Phone: 651-659-9001
Fax: 651-659-1379
Website: www.amengtest.com

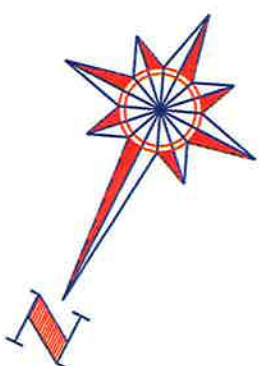


FIGURE 3.C

**Hiawatha Flats
Minneapolis, Minnesota**

Boring Location Plan

DRAWN BY:	CHECKED BY:
DATE:	AET JOB NO. 03-02255

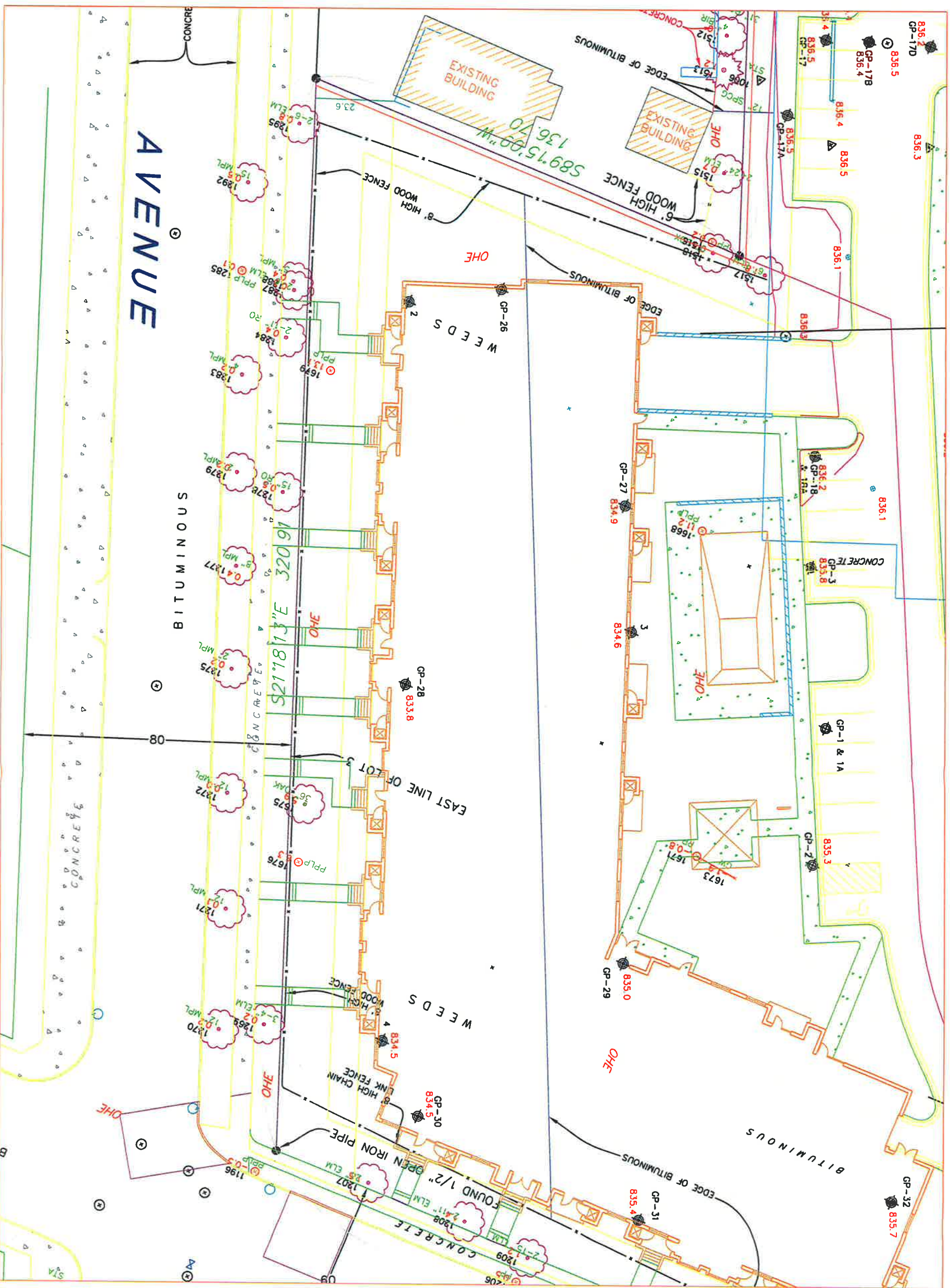
EXPLANATION:

Scale



- Boring
- Circular Drain
- Manhole
- Trench Drain

REFERENCE:



AVENUE

SUONINUIB

EXISTING BUILDING

W E D S

W E D S

BITUMINOUS

8' HIGH WOOD FENCE

8' HIGH CHAIN LINK FENCE

OPEN 1/2" IRON PIPE

589'15.00" W
136'7.0"

320'9.1"

321'8.11"

EAST LINE OF LOT 3

FOUND 1/2" ELM

CONCRETE

CONCRETE

CONCRETE

CONCRETE

CONCRETE

CONCRETE

CONCRETE

CONCRETE

CONCRETE

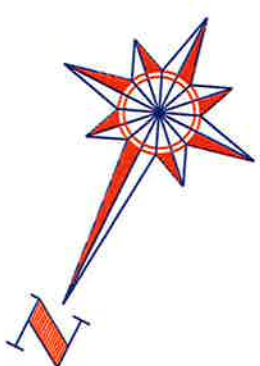


FIGURE 4.A

HIAWATHA FLATS
Minneapolis, Minnesota

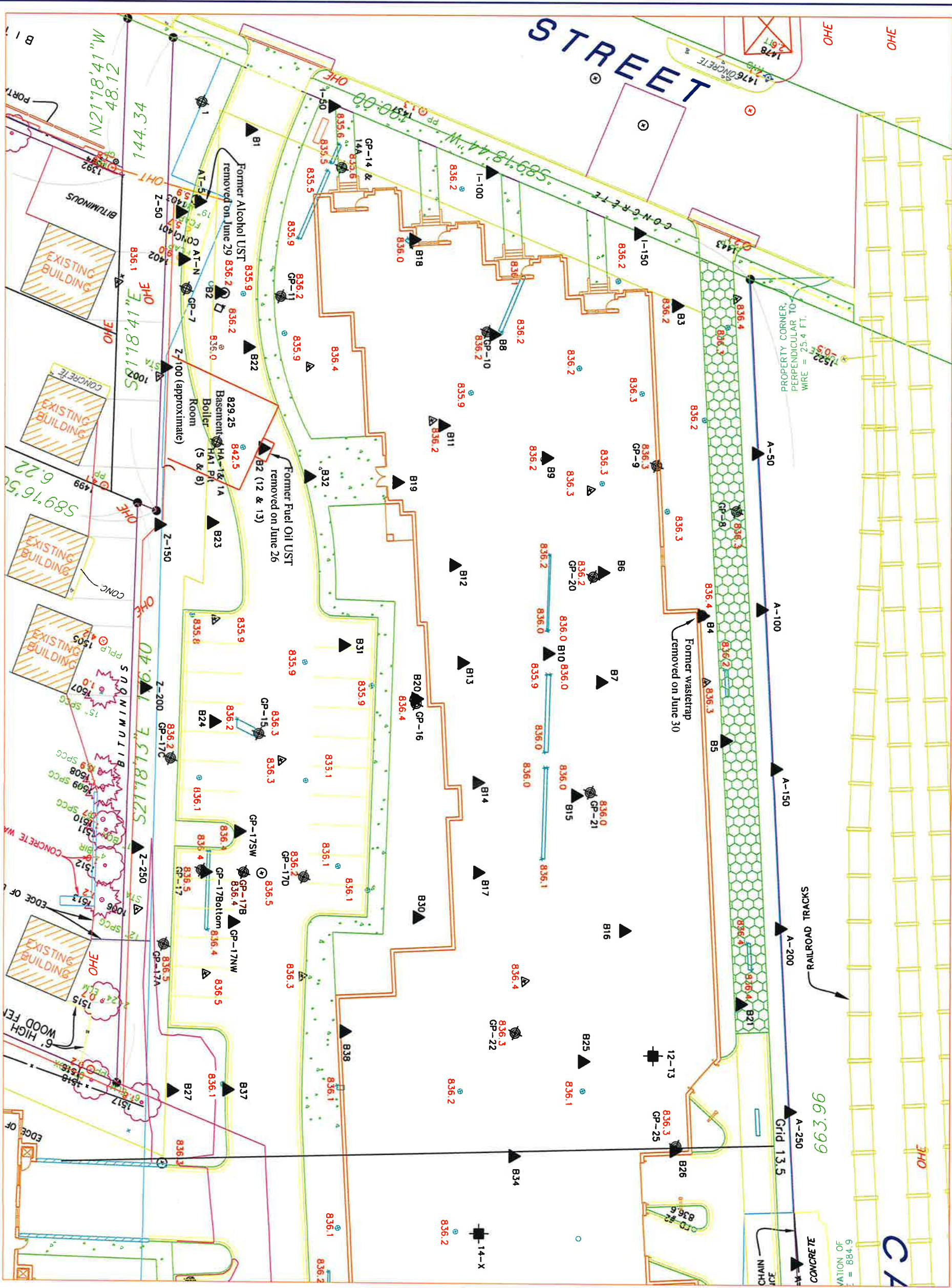
SAMPLE LOCATION PLAN

DRAWN BY: _____ CHECKED BY: _____
DATE: _____ AET JOB NO. 03-02255

EXPLANATION:

- ▲ Analytical Sample Location
- Test Pit
- ⊕ Boring
- ⊙ Circular Drain
- Manhole
- Trench Drain

Scale



REFERENCE:

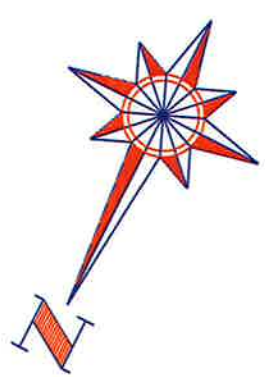


FIGURE 4.B

HIAWATHA FLATS
Minneapolis, Minnesota

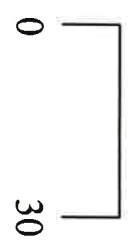
SAMPLE LOCATION PLAN

DRAWN BY:	CHECKED BY:
DATE:	AET JOB NO. 03-02255

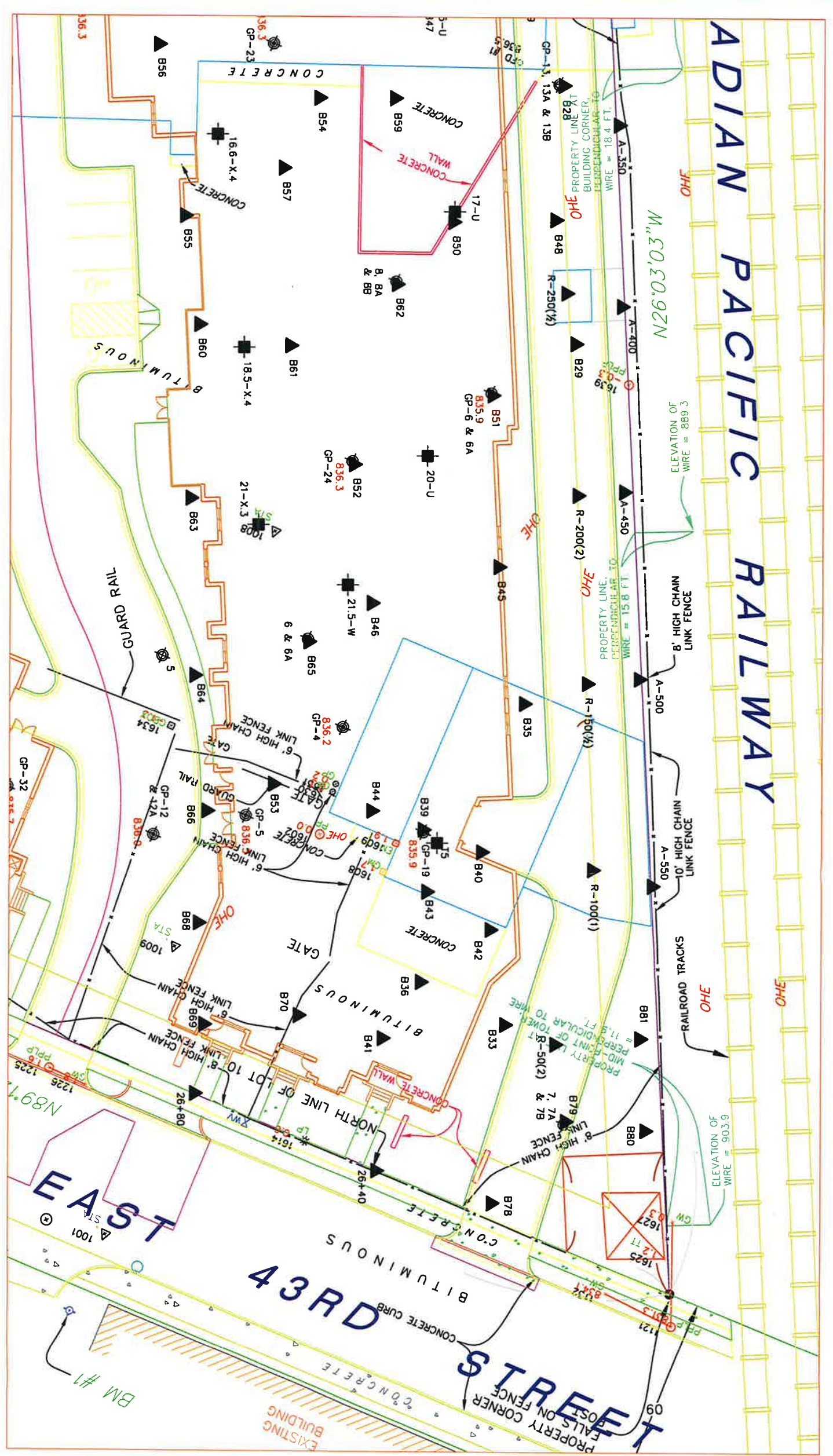
EXPLANATION:

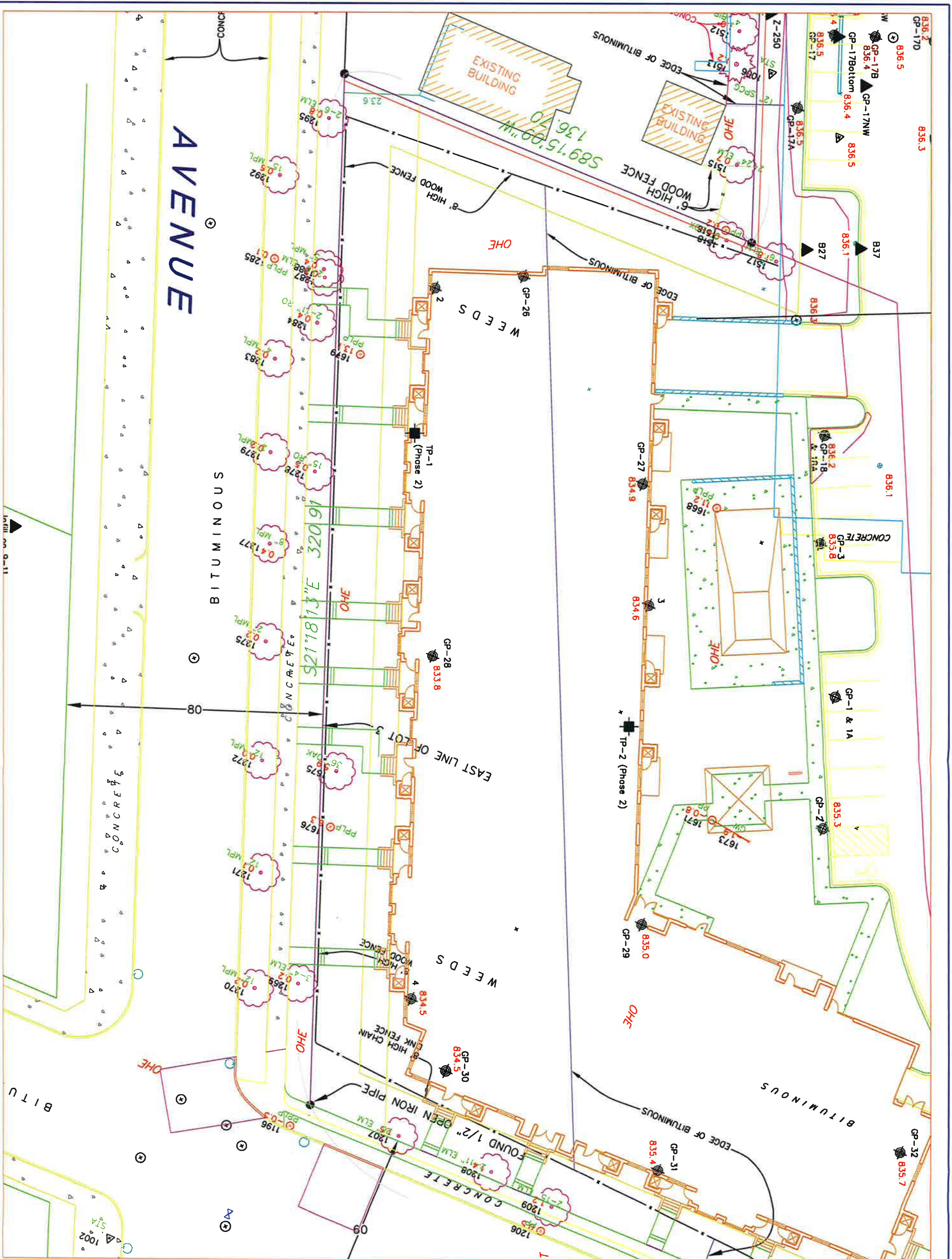
- ▲ Analytical Sample Location
- ◆ Test Pit
- Boring
- ⊕ Circular Drain
- ⊙ Manhole
- Trench Drain

Scale



REFERENCE:





**AMERICAN
ENGINEERING
TESTING, INC.**

550 Cleveland Avenue North
St. Paul, Minnesota 55114

Phone: 651-659-9001
Fax: 651-659-1379
Website: www.amengtest.com

CONSULTANTS
• GEOTECHNICAL
• ENVIRONMENTAL
• MATERIALS

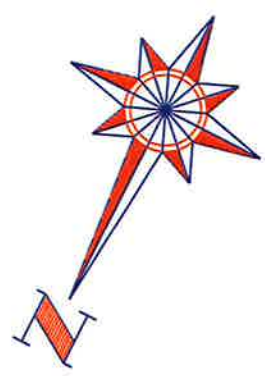


FIGURE 4.C

**HIAWATHA FLATS
Minneapolis, Minnesota**

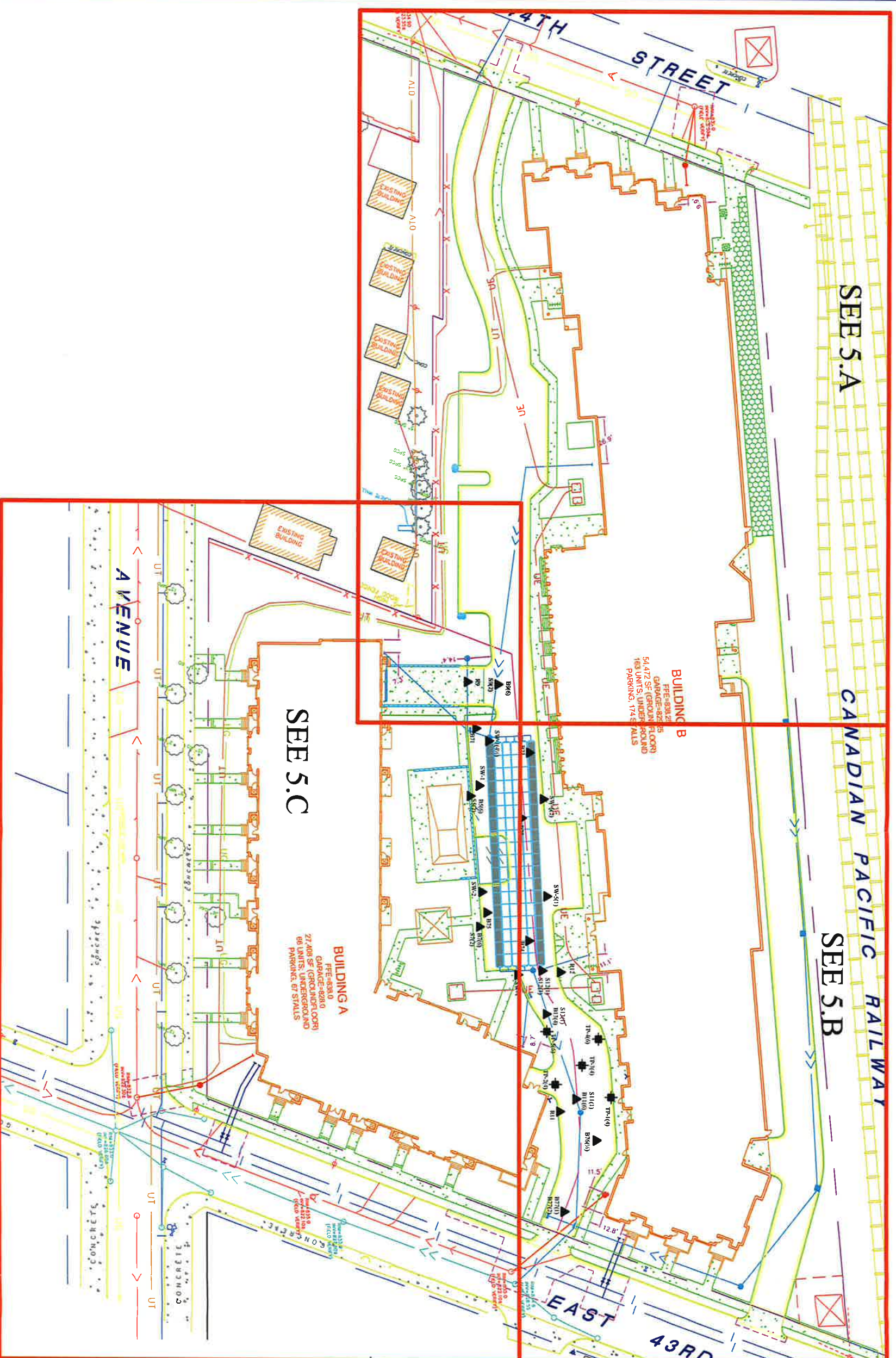
SAMPLE LOCATION PLAN

DRAWN BY: _____ CHECKED BY: _____
DATE: _____ AET JOB NO. 03-02255

EXPLANATION:
Scale
0 30

- ▲ Analytical Sample Location
- ◆ Test Pit
- Boring
- ⊕ Circular Drain
- ⊙ Manhole
- Trench Drain

REFERENCE:



550 Cleveland Avenue North
St. Paul, Minnesota 55114
Phone: 651-659-9001
Fax: 651-659-1379
Website: www.amangtest.com

AMERICAN ENGINEERING TESTING, INC.
CONSULTANTS
• GEOTECHNICAL
• ENVIRONMENTAL
• MATERIALS

FIGURE 5

HIAWATHA FLATS
Minneapolis, Minnesota
INFILTRATION BASIN
UTILITY SAMPLE
LOCATION PLAN

DRAWN BY: [blank] CHECKED BY: [blank]
DATE: [blank] AET JOB NO. 03-02255

EXPLANATION:
Scale



- ▲ Analytical Sample Location
- ◆ Test Pit
- Boring
- ⊙ Circular Drain
- Manhole
- Trench Drain

REFERENCE:

CAI



**AMERICAN
ENGINEERING
TESTING, INC.**

550 Cleveland Avenue North
St. Paul, Minnesota 55114

Phone: 651-659-9001
Fax: 651-659-1379
Website: www.amengtest.com

CONSULTANTS
• GEOTECHNICAL
• ENVIRONMENTAL
• MATERIALS

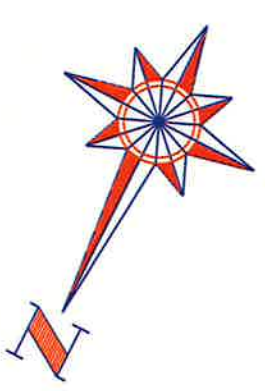


FIGURE 5.A

HIAWATHA FLATS
Minneapolis, Minnesota

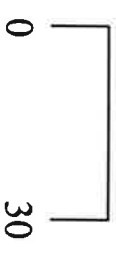
**INFILTRATION BASIN
UTILITY SAMPLE
LOCATION PLAN**

DRAWN BY: _____ CHECKED BY: _____
DATE: _____ AET JOB NO. 03-02255

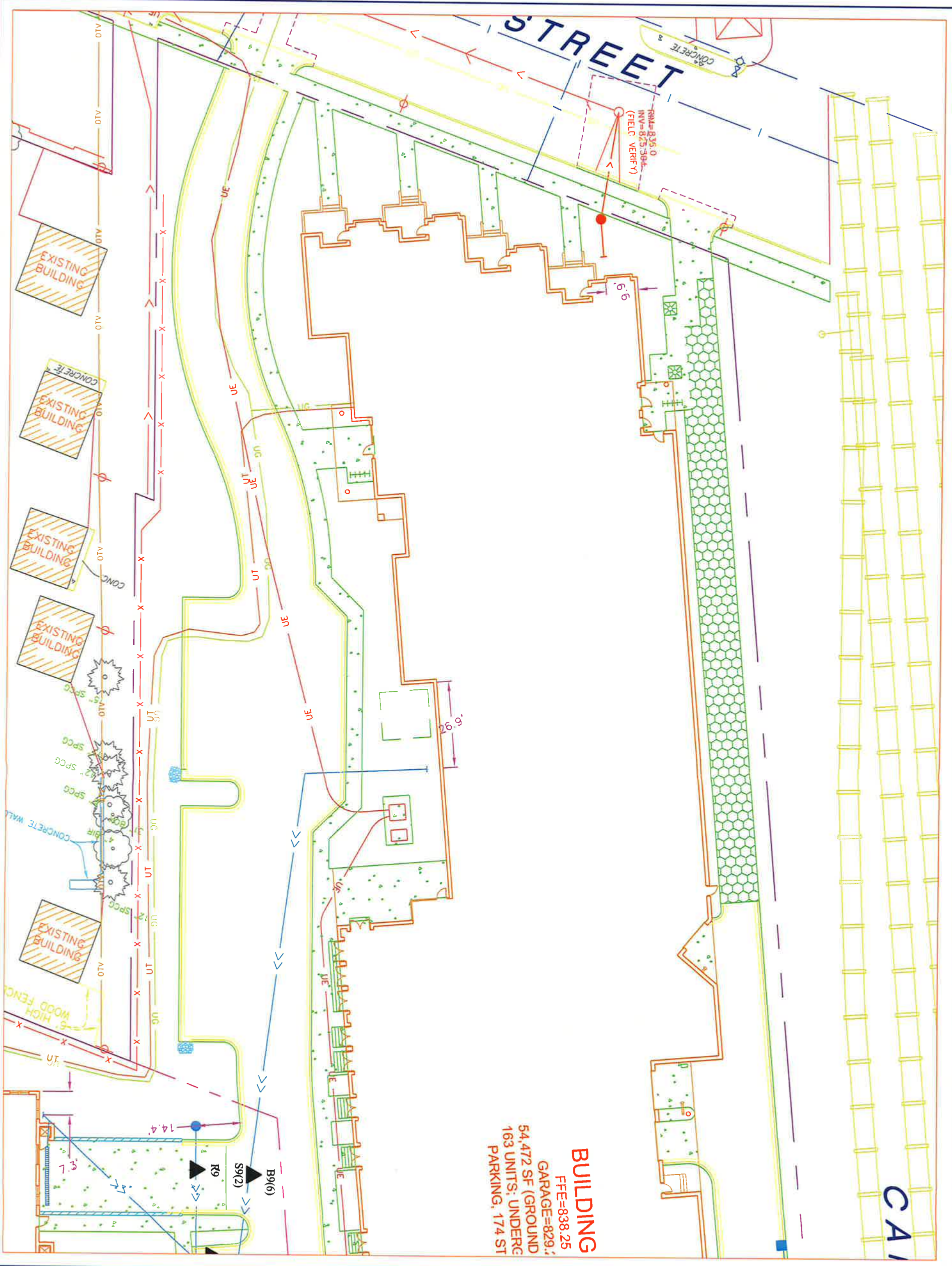
EXPLANATION:

- ▲ Analytical Sample Location
- ◆ Test Pit
- ⊙ Boring
- ⊕ Circular Drain
- ⊙ Manhole
- Trench Drain

Scale



BUILDING
FFE=838.25
GARAGE=829.4
54,472 SF (GROUND
163 UNITS; UNDERG
PARKING, 174 ST



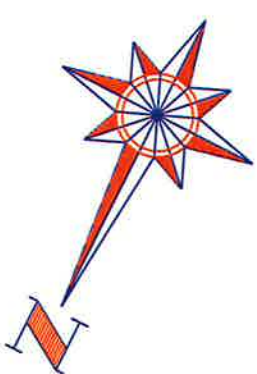


FIGURE 5.B

**HIAWATHA FLATS
Minneapolis, Minnesota**

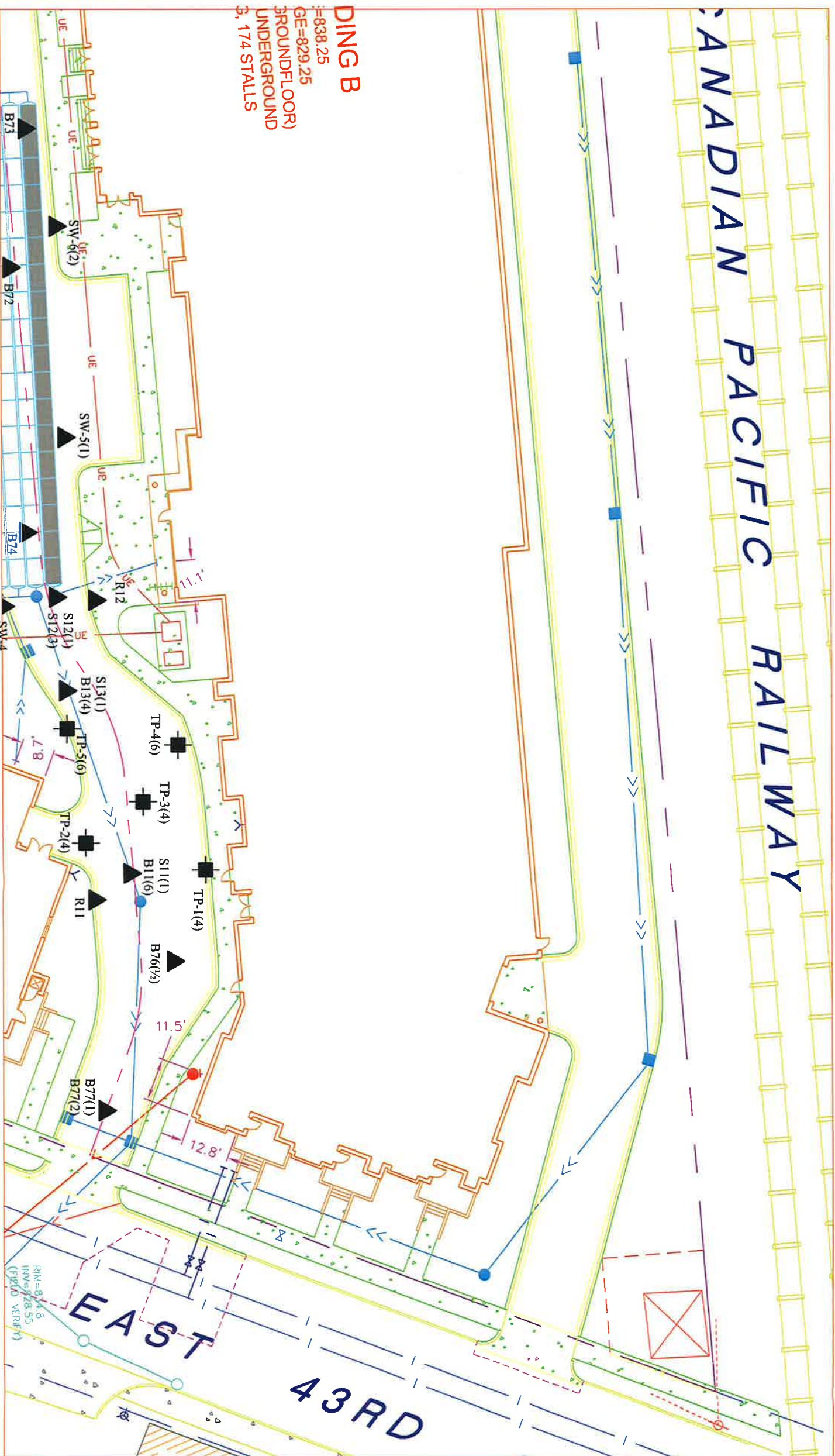
**INFILTRATION BASIN
UTILITY SAMPLE
LOCATION PLAN**

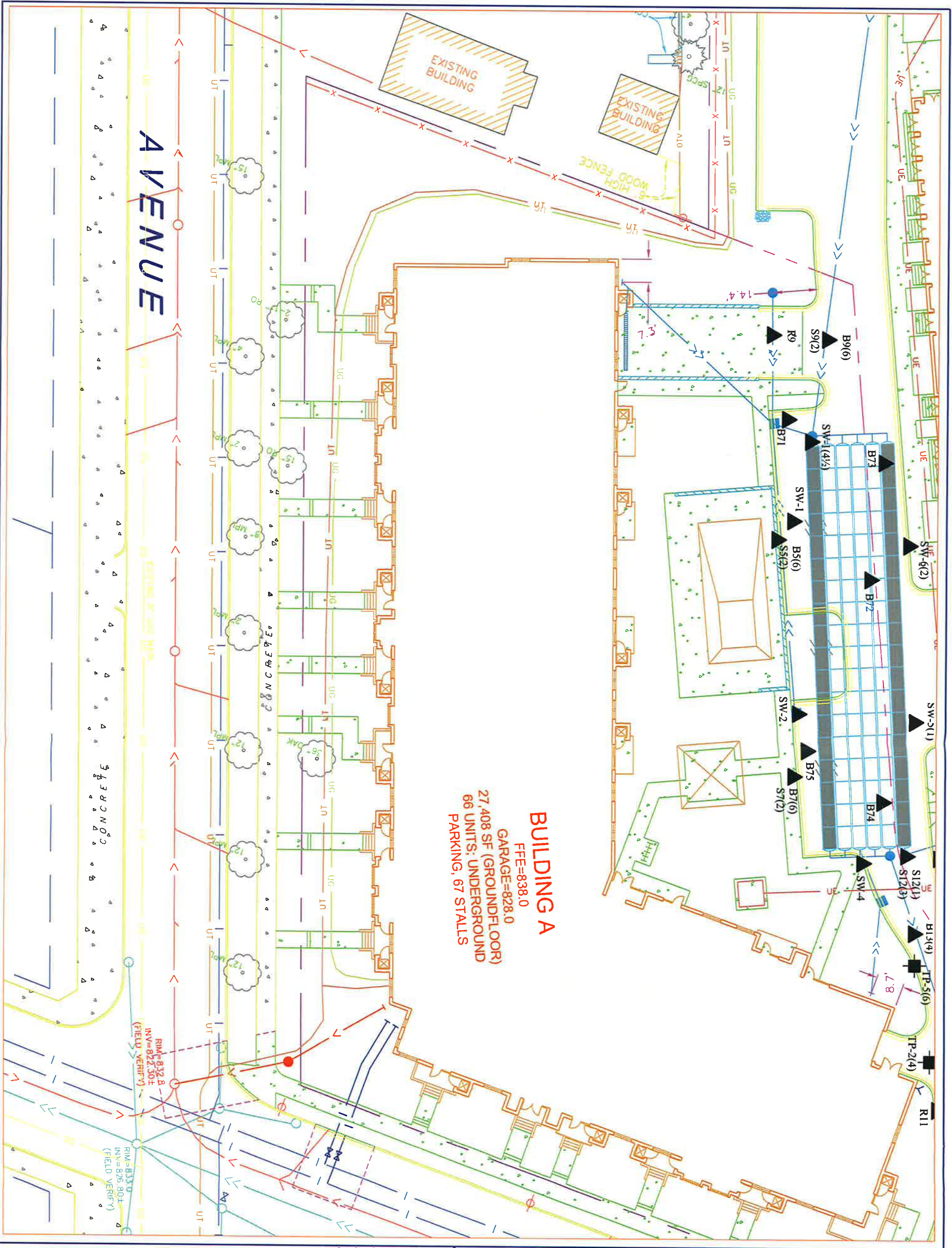
DRAWN BY: _____ CHECKED BY: _____
DATE: _____ AET JOB NO. 03-02255

EXPLANATION:

- ▲ Analytical Sample Location
- ◆ Test Pit
- ⊕ Boring
- ⊙ Circular Drain
- ⊙ Manhole
- Trench Drain

REFERENCE:





BUILDING A
 FFE=838.0
 GARAGE=828.0
 27,408 SF (GROUND FLOOR)
 66 UNITS; UNDERGROUND
 PARKING, 67 STALLS

AMERICAN ENGINEERING TESTING, INC.
 CONSULTANTS
 GEOTECHNICAL
 ENVIRONMENTAL
 MATERIALS

550 Cleveland Avenue North
 St. Paul, Minnesota 55114
 Phone: 651-659-9001
 Fax: 651-659-1379
 Website: www.amengtest.com

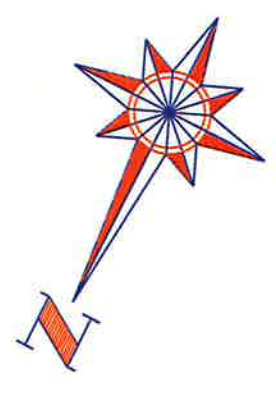


FIGURE 5.C

HIAWATHA FLATS
 Minneapolis, Minnesota

**INFILTRATION BASIN
 UTILITY SAMPLE
 LOCATION PLAN**

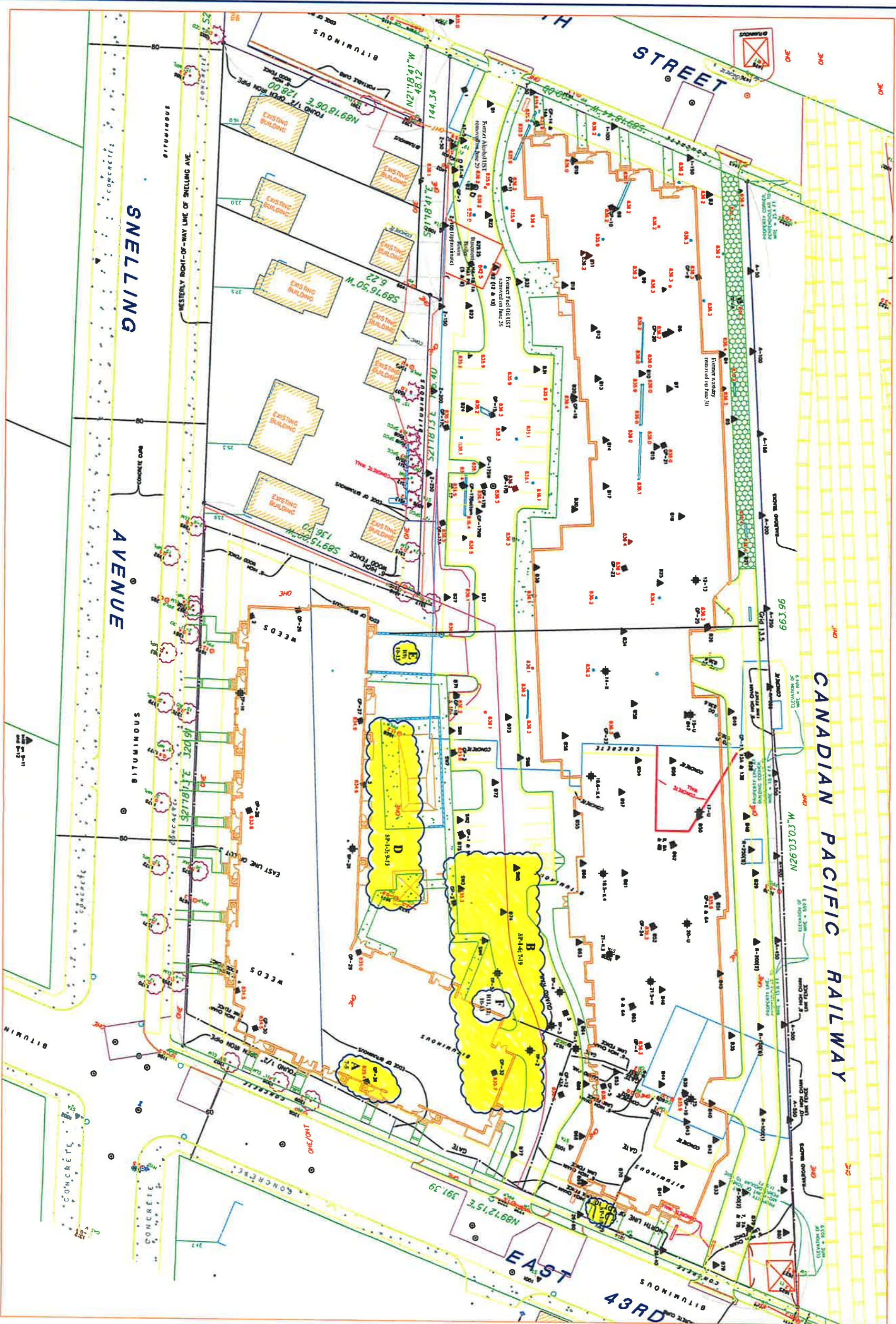
DRAWN BY:	CHECKED BY:
DATE:	AET JOB NO. 03-02255

EXPLANATION:
 Scale



- ▲ Analytical Sample Location
- Test Pit
- ⊕ Boring
- ⊙ Circular Drain
- ⊙ Manhole
- Trench Drain

REFERENCE:



A - SP East and SP West; 7-5
 B - Stockpile 1 through Stockpile 6; 7-19
 C - SP-1; 8-29

D - SP-1 thorough SP-3; 9-13
 E - R9; 10-13
 F - R11 and 12; 10-13

AMERICAN ENGINEERING TESTING, INC.
 CONSULTANTS
 • GEOTECHNICAL
 • ENVIRONMENTAL
 • MATERIALS

550 Cleveland Avenue North
 St. Paul, Minnesota 55114
 Phone: 651-659-9001
 Fax: 651-659-1379
 Website: www.amengtest.com

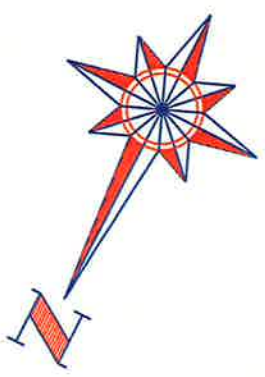


FIGURE 6

HIAWATHA FLATS
 Minneapolis, Minnesota

STOCKPILE LOCATIONS PLAN

DRAWN BY:	CHECKED BY:
DATE:	AET JOB NO. 03-072255

EXPLANATION:
 Scale



- ▲ Analytical Sample Location
- ◆ Test Pit
- ⊕ Boring
- ⊙ Circular Drain
- ⊙ Manhole
- Trench Drain

REFERENCE: