

**MN Bio Business Center
Meeting Agenda- November 22, 2011**

Time: 10:30 AM

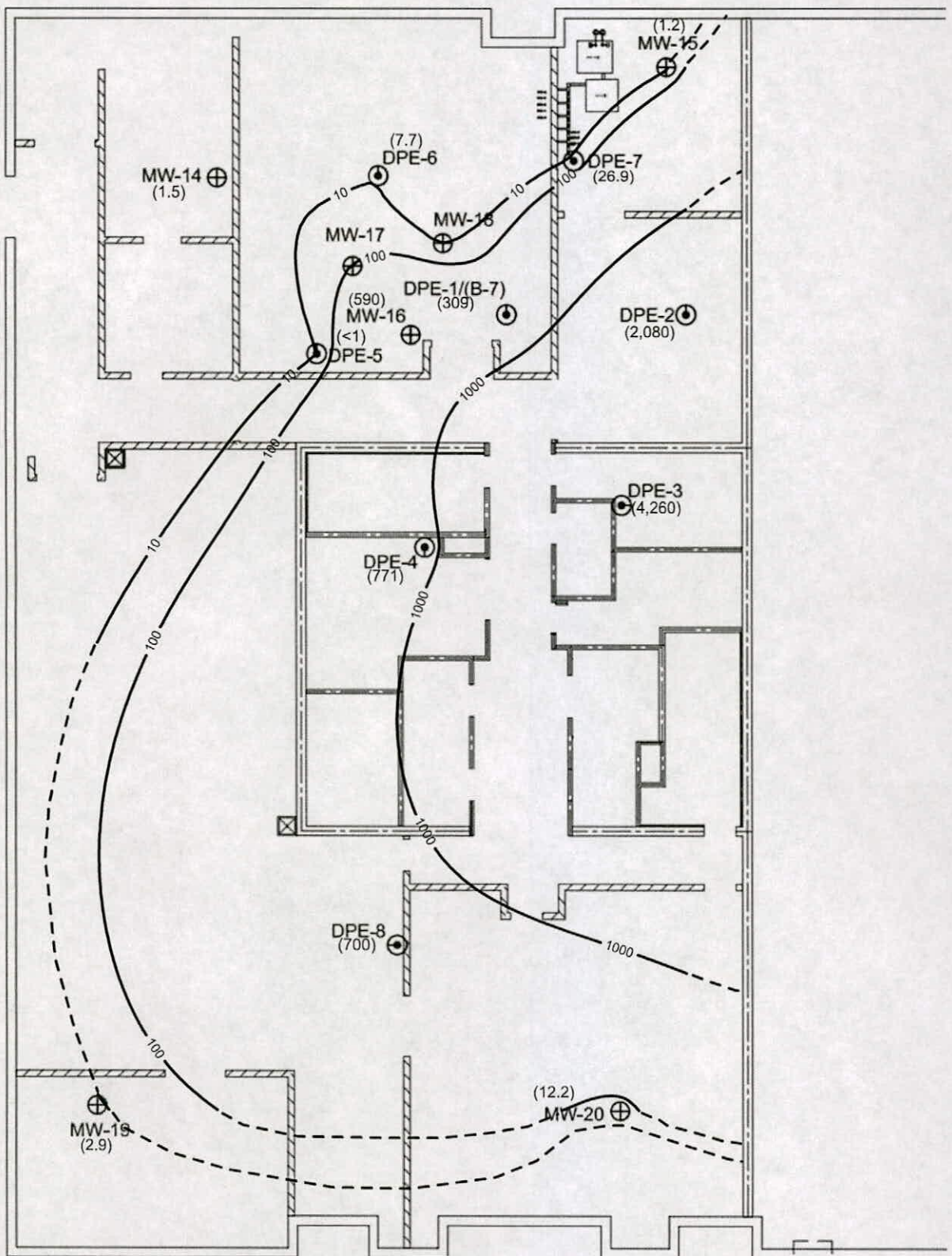
Location: City of Rochester Administration Building

Attendees:

**Edward Olson, MPCA
Alan Timm, MPCA
Terry Spaeth, City of Rochester
Gary Neumann, City of Rochester
Ken Haberman, Landmark
Jason Skramstad, Landmark**

- 1. Sit Down Meeting with MPCA, City of Rochester, and Landmark**
 - Discuss Path to Site Closure**
 - ✓ DPE System Status**
 - ✓ Groundwater Results**
 - ✓ Previous Vapor Intrusion Investigations**

- 2. Tour DPE System**



LEGEND

- ⊙ DPE Well Location
- ⊕ Monitoring Well Location

(4.2) PCE Groundwater Concentration (micrograms per liter)

LEGEND

1. MW-17 and 18 are not shallow wells; therefore, the data from these wells was not used in the contouring calculations.



10 feet
SCALE

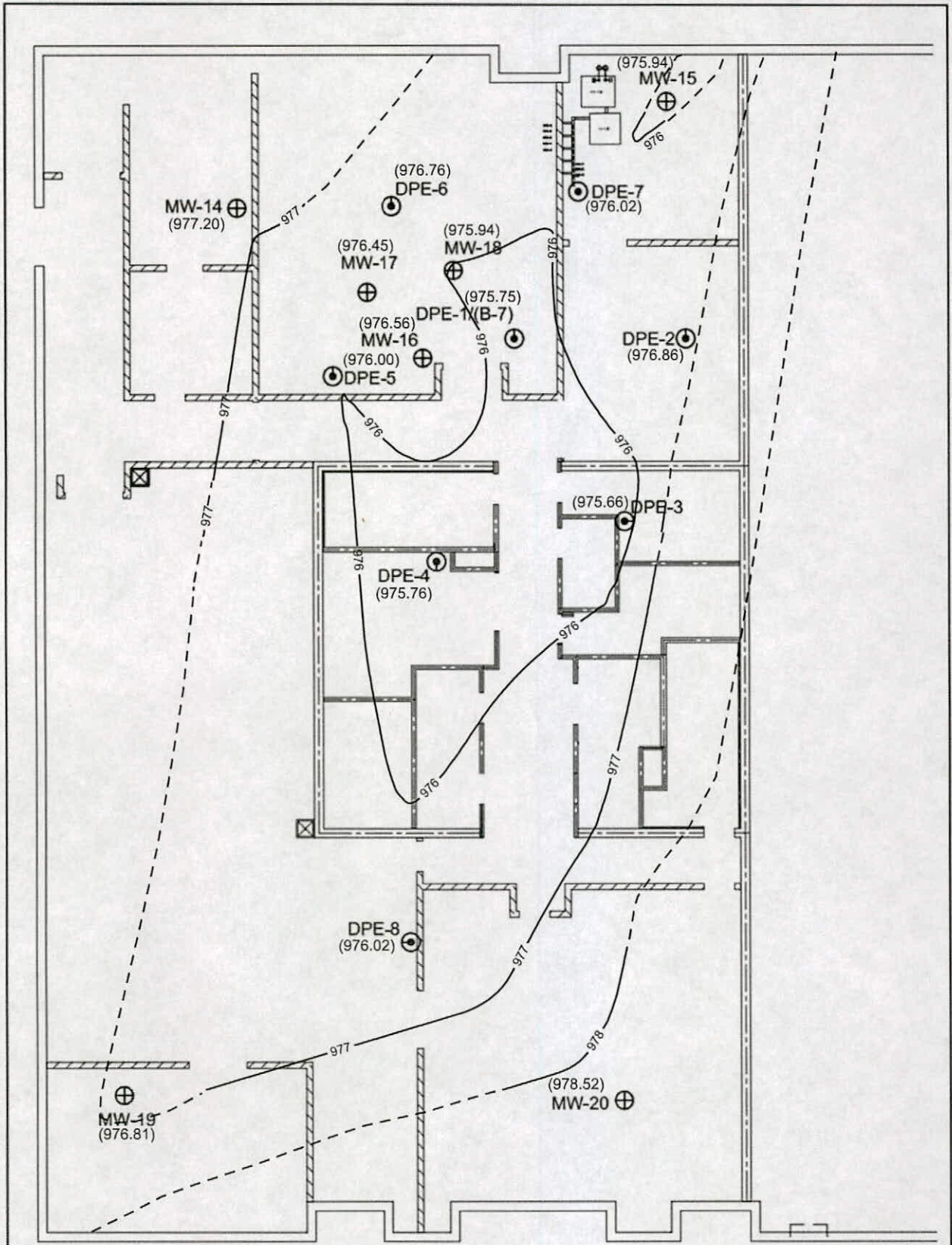
BASE DRAWING PROVIDED BY HGA

Rev	Date	By	Description

LANDMARK ENVIRONMENTAL, LLC
2042 West 98th Street
Bloomington, MN 55431

FIGURE 10
SHALLOW PCE GROUNDWATER
CONCENTRATION INTERPRETATION
August 2011
221 FIRST AVENUE S.W.
ROCHESTER, MINNESOTA

Landmark Project Number: CRC		
Drawn: KAB	Checked: JDS	Designed: JDS
Scale: .	Date: 7/15/2011	Revised: .
Drawing Number: .	Sheet	Of Sheets



LEGEND

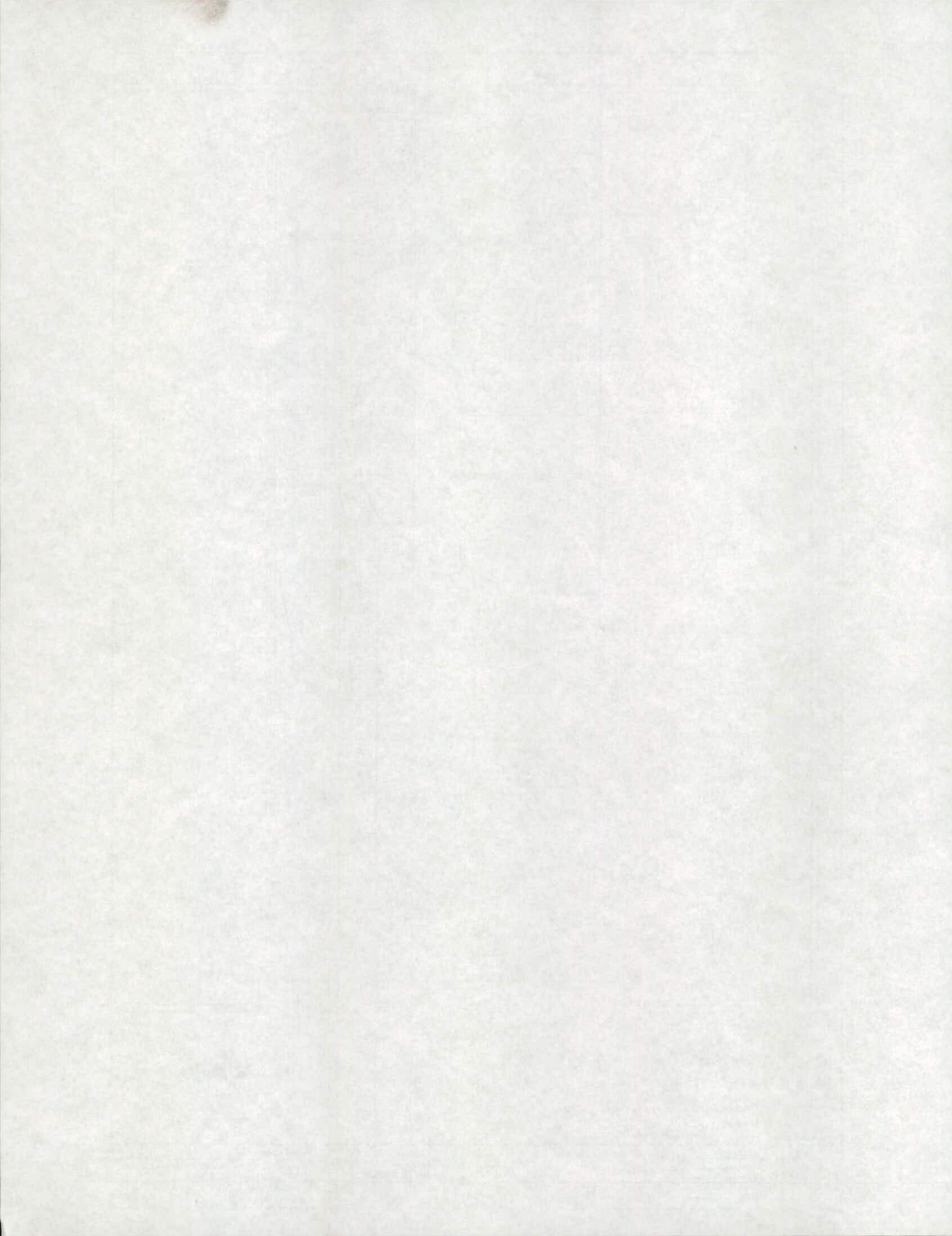
- ⊙ DPE Well Location
- ⊕ Monitoring Well Location
- (976.92) Groundwater Elevation (feet above mean sea level)

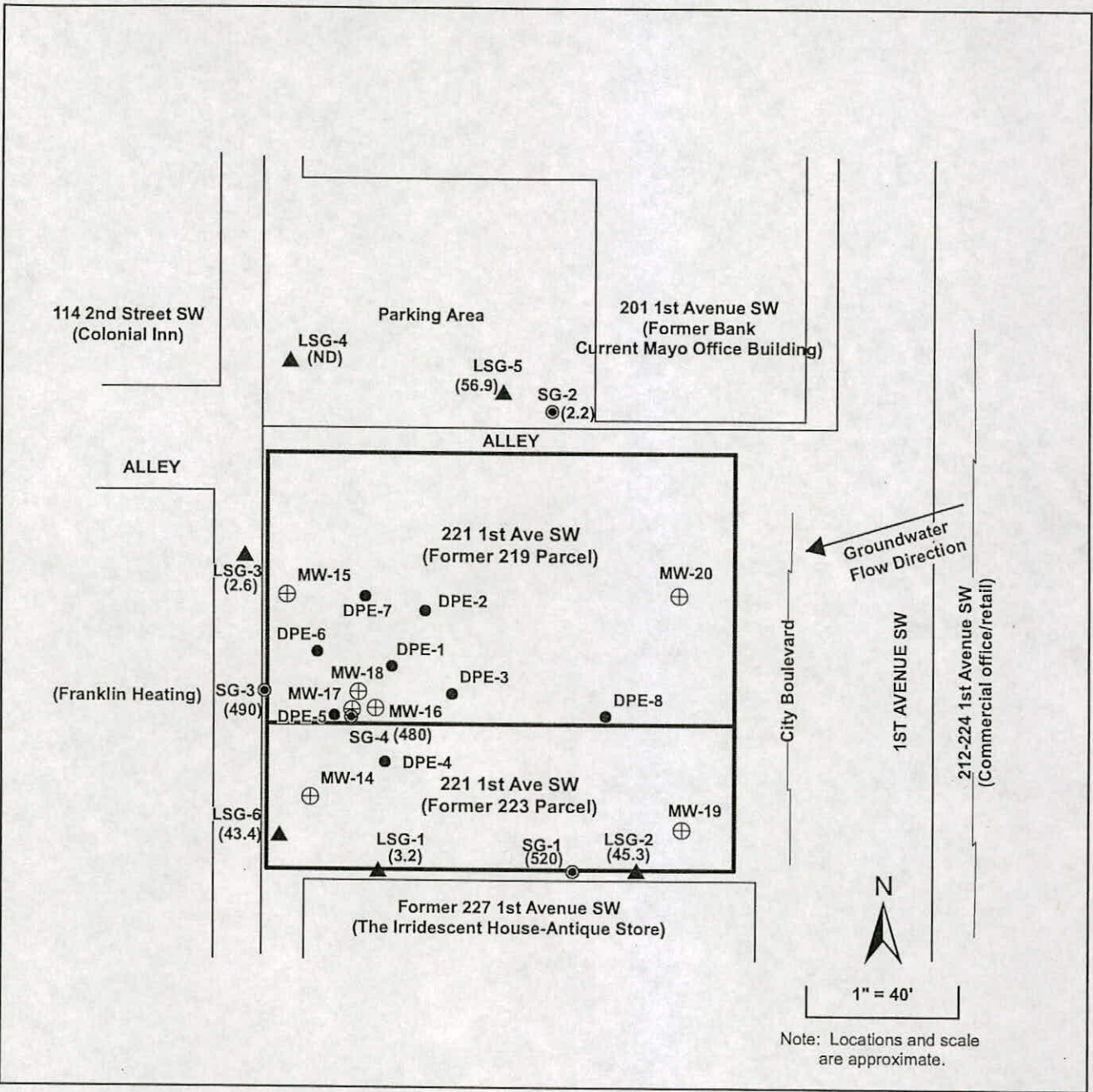


10 feet
SCALE

BASE DRAWING PROVIDED BY HGA

Rev.	Date	By	Description	LANDMARK ENVIRONMENTAL, LLC 2042 West 98th Street Bloomington, MN 55431	FIGURE 8E GROUNDWATER FLOW INTERPRETATION- October 27, 2011 221 FIRST AVENUE S.W. ROCHESTER, MINNESOTA	Landmark Project Number: CRC		
						Drawn: KAB	Checked: JDS	Designed: JDS
						Scale: .	Date: . 11/1/2011	Revision:
						Sheet	Of	Sheets





LEGEND

- Property Line
- (520) ● DPR Soil Vapor Point (11/2005) (ug/m3)
- (3.2) ▲ Landmark Soil Vapor Point (12/2006) (ug/m3)
- 2008 DPE and Monitoring Wells
- DPE Well
- ⊕ Monitoring Well

FIGURE 1

**PREVIOUS SOIL VAPOR LOCATIONS
AND CURRENT WELL LOCATIONS
221 1st Avenue SW
Rochester, Minnesota**

FIGURE 9

PCE CONCENTRATIONS IN GROUNDWATER
MN Bio Business Center
221 1st Avenue SW
Rochester, Minnesota

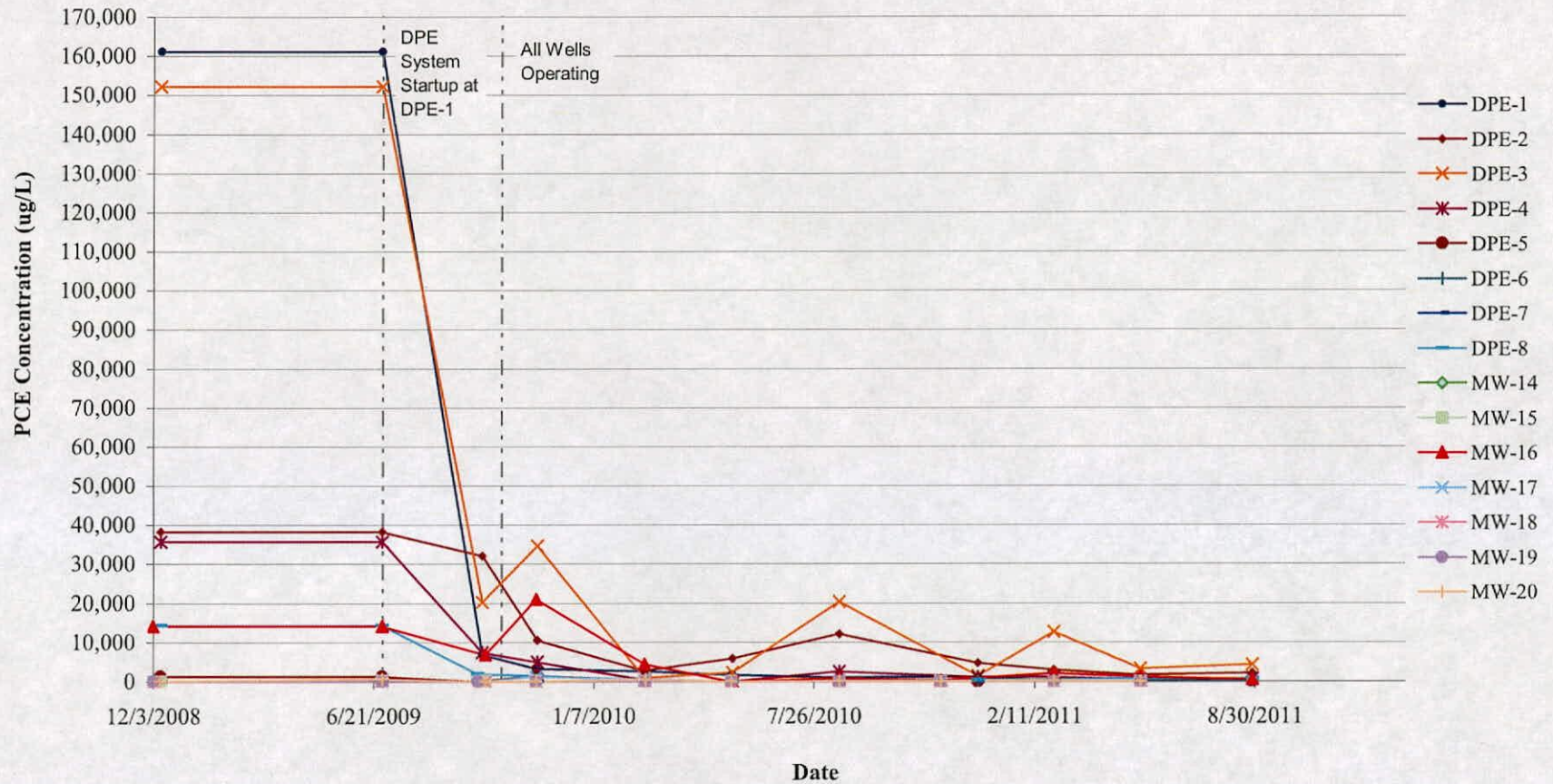


FIGURE 5
CUMULATIVE MASS REMOVED
MN Bio Business Center
221 1st Avenue SW
Rochester, Minnesota

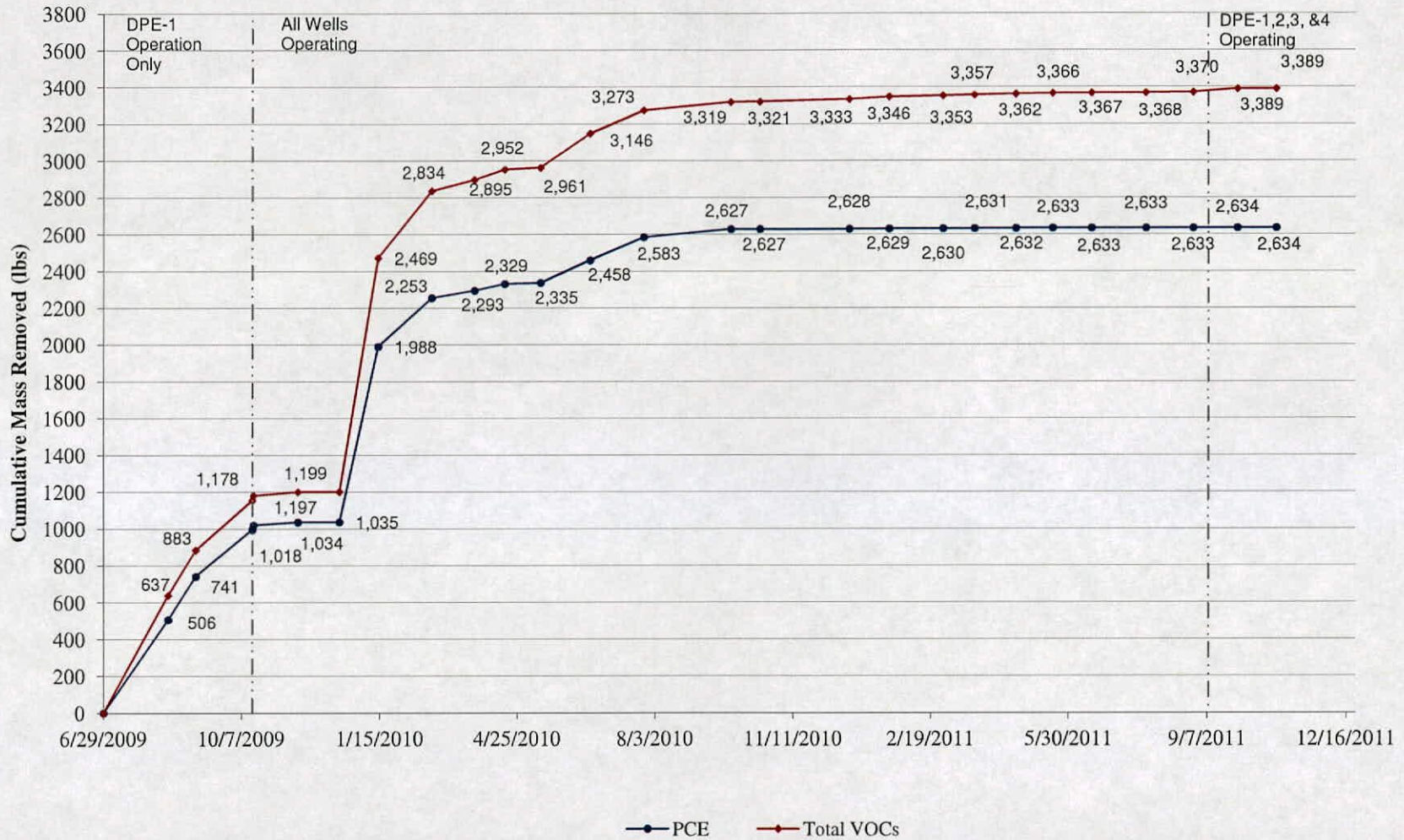


FIGURE 6

DPE WELL HYDROGRAPHS
 MN Bio Business Center
 221 1st Avenue SW
 Rochester, Minnesota

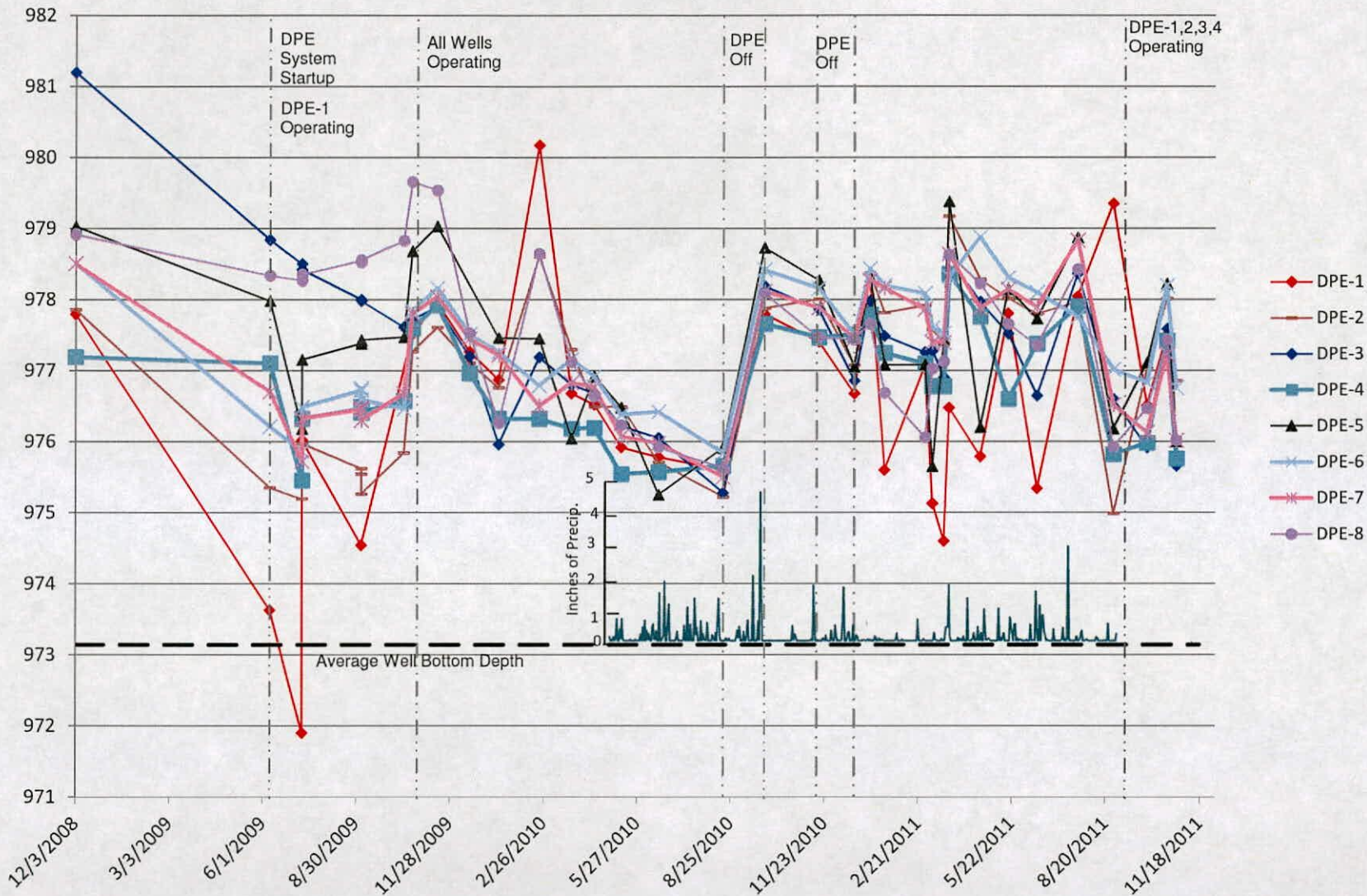


FIGURE 4A

DPE EMISSIONS CONCENTRATIONS-JUNE 2009 TO PRESENT
MN Bio Business Center
221 1st Avenue SW
Rochester, Minnesota

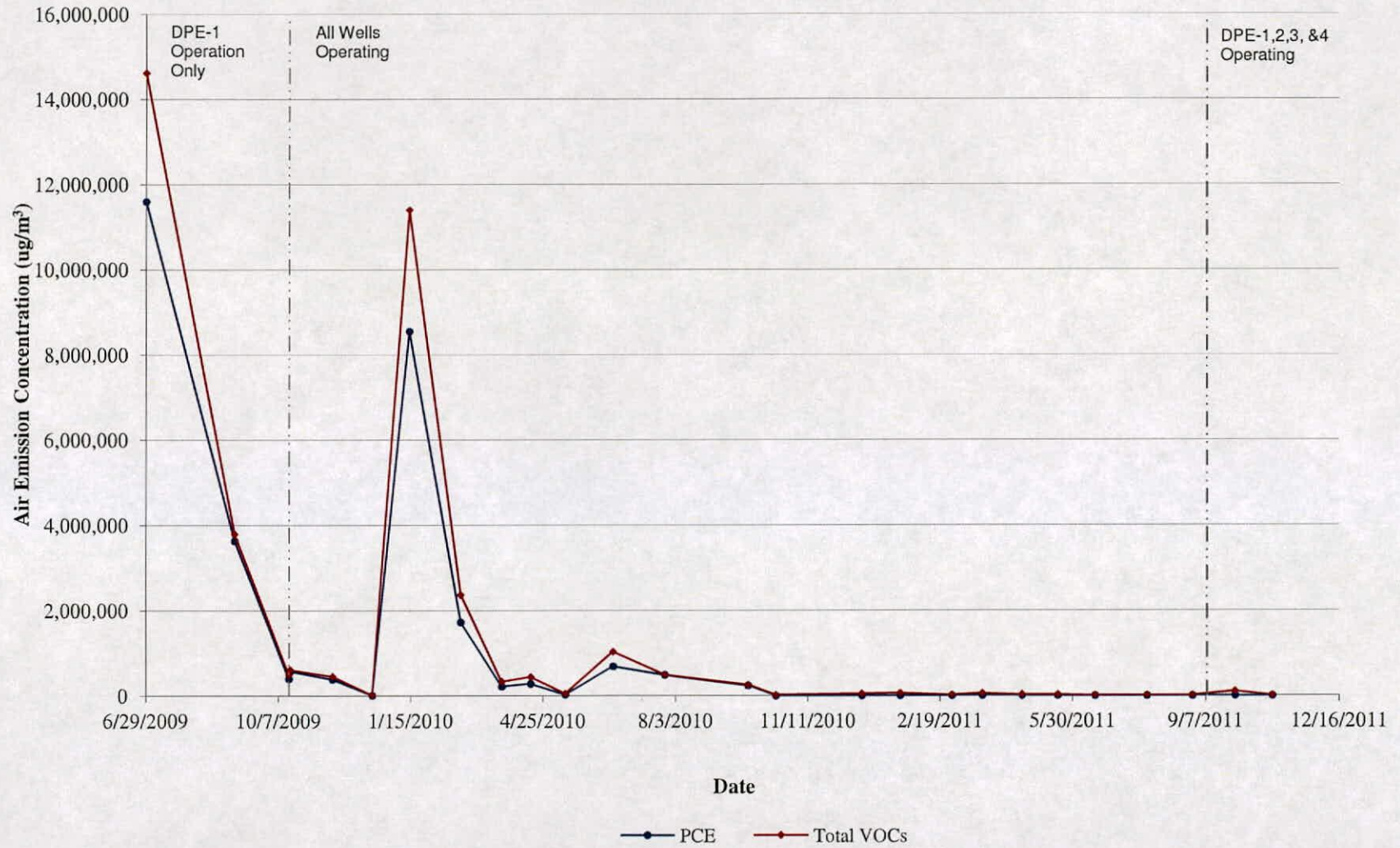


FIGURE 4B

DPE EMISSIONS CONCENTRATIONS - JULY 2010 TO PRESENT
MN Bio Business Center
221 1st Avenue SW
Rochester, Minnesota

