

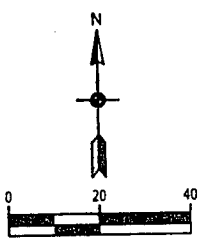
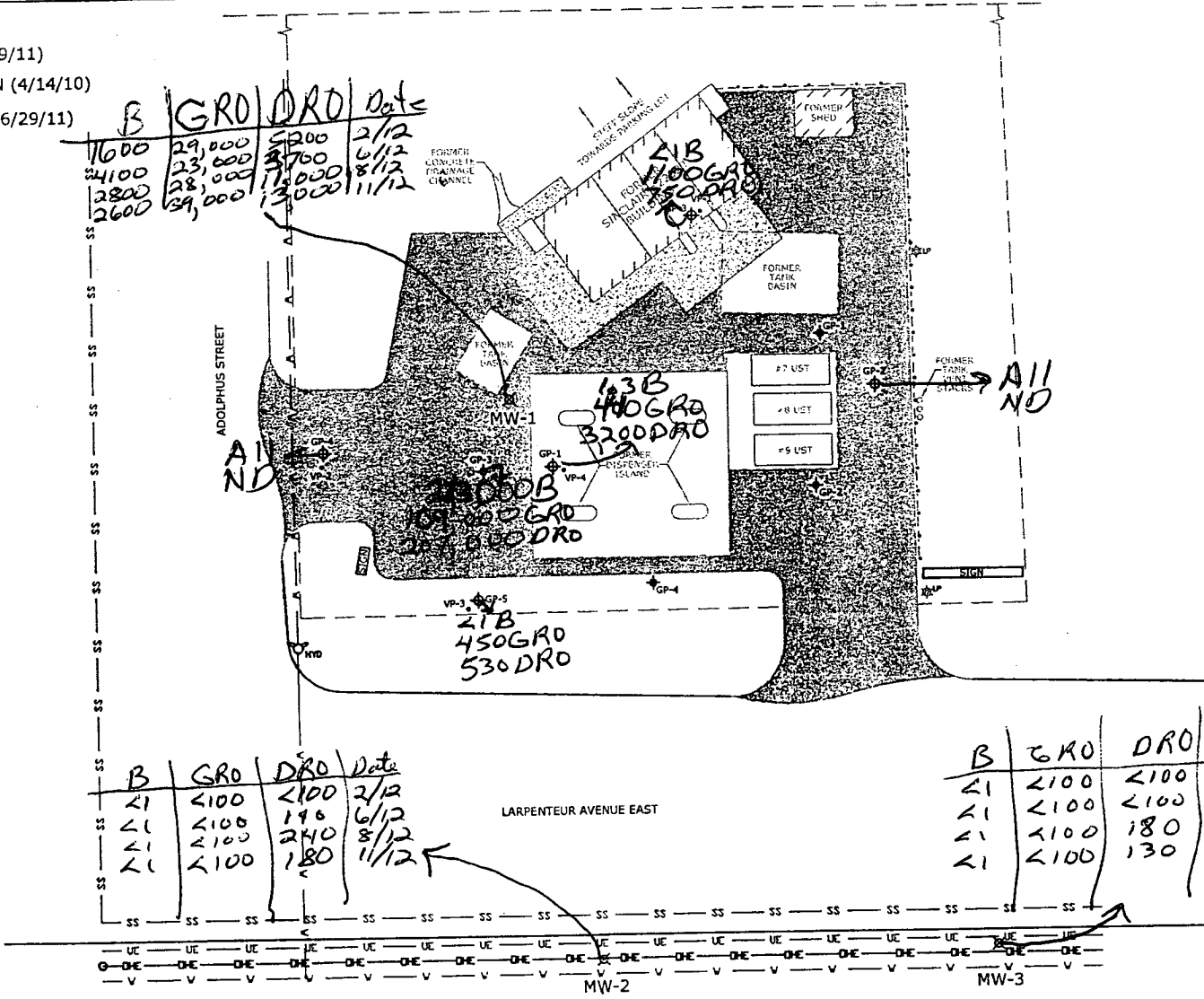
**LEGEND**

- ⊕ LSI SOIL BORING LOCATION (6/29/11)
- ⊕ PHASE II SOIL BORING LOCATION (4/14/10)
- SOIL VAPOR BORING LOCATION (6/29/11)
- HYD FIRE HYDRANT
- ⊕ LIGHT POLE
- BURIED WATER LINE
- PROPERTY LINE
- GUARD RAIL
- ⊗ MONITORING WELL
- SS — SANITARY SEWER LINE
- OE — OVERHEAD ELECTRIC LINE
- UE — UNDERGROUND ELECTRIC LINE
- POWER POLE

B	GRO	DRO	Date
1600	29,000	5200	2/12
4100	23,000	3700	6/12
2800	28,000	11000	8/12
2600	39,000	13000	11/12

B	GRO	DRO	Date
L1	<100	<100	2/12
L1	<100	196	6/12
L1	<100	240	8/12
L1	<100	180	11/12

B	GRO	DRO	Date
L1	<100	<100	2/12
L1	<100	<100	6/12
L1	<100	180	8/12
L1	<100	130	11/12



ANNUAL MONITORING REPORT  
 Former Sinclair #22020  
 223 Larpenteur Avenue  
 Maplewood, Minnesota 55423  
 Carlson McCain Project No.: 3327-00  
 MPCA LEAK No.: 17952

FIGURE 2b  
 SITE PLAN VIEW





ADJACENT RESIDENCE # 1701

ADJACENT GARAGE

WOOD FENCE

ADJACENT RESIDENCE # 215

B TPH/GRD Date  
 93 3400 11/90  
 24 2300 12/91  
 10 280 2/96  
 NP NP 2/00

MW-10  
 1.3 @ 4-6' CL  
 1.3 @ 4-11 CL  
 1.4 @ 11-13 ML  
 1.3 @ 13-15 ML  
 0.2 @ 15-17' PT  
 0.5 @ 17-19' CL  
 0.5 @ 19-21' CL  
 2.4 @ 21-23' CL

Mostly ND  
 CATCH BASIN  
 BDL Gas  
 TPH Fuel Oil

ADOLPHUS STREET

MW-02  
 1.1 @ 6-9 CL  
 0.5 @ 9-11 SP  
 2.0 @ 14-16 ML  
 0.0 @ 19-21 ML  
 0.0 @ 24-26 ML

MW-03  
 0.0 @ 20-4' SM  
 0.0 @ 4-6' SM  
 0.0 @ 9-11' CL  
 15.8 @ 14-16' SP  
 10.0 @ 19-21 ML  
 13.2 @ 23-25 SM

MW-04  
 0.0 @ 20-4' CL  
 0.0 @ 4-6' SC  
 0.0 @ 6-9' CL  
 0.0 @ 9-11' ML  
 18.5 @ 14-16' ML  
 287 @ 19-21 SP

MW-05  
 0.0 @ 4-6' CL  
 0.0 @ 9-11' CL  
 3.8 @ 14-16' CL  
 74.6 @ 19-21 SP  
 0.0 @ 24-26 SP  
 0.0 @ 28-31 SP  
 0.0 @ 34-36' CL

MW-06  
 0 @ 4-6' CL  
 0 @ 9-11' SP  
 0 @ 14-16' SP  
 0 @ 19-21' SP  
 0 @ 24-26' SP  
 For @ 28' SP

MW-07  
 0 @ 0-49' SM-SP-CL-SP  
 BDL TPH @ 34'

MW-08  
 0 @ 0-19' SP  
 2 @ 19-21' SP  
 0 @ 21-46' SP/CL  
 BDL TPH @ 34'

MW-09  
 2.7 @ 0-4' CL  
 1.6 @ 4-6' CL  
 2.4 @ 6-8' CL  
 0.3 @ 8-10' SP  
 2.5 @ 10-12' SP  
 1.5 @ 12-14' SP  
 1 @ 14-19' SP/CL

MW-01  
 0.0 @ 0-36' BDL TPH  
 Mostly ND

MW-02  
 1.9 @ 0-4' CL  
 1.0 @ 4-6' CL  
 1.3 @ 9-11' SP  
 1.6 @ 14-16' SP  
 1.9 @ 19-21 ML  
 0.0 @ 24-26 ML

MW-03  
 0.0 @ 20-4' SM  
 0.0 @ 4-6' SM  
 0.0 @ 9-11' CL  
 15.8 @ 14-16' SP  
 10.0 @ 19-21 ML  
 13.2 @ 23-25 SM

MW-04  
 0.0 @ 20-4' CL  
 0.0 @ 4-6' SC  
 0.0 @ 6-9' CL  
 0.0 @ 9-11' ML  
 18.5 @ 14-16' ML  
 287 @ 19-21 SP

MW-05  
 0.0 @ 4-6' CL  
 0.0 @ 9-11' CL  
 3.8 @ 14-16' CL  
 74.6 @ 19-21 SP  
 0.0 @ 24-26 SP  
 0.0 @ 28-31 SP  
 0.0 @ 34-36' CL

MW-06  
 0 @ 4-6' CL  
 0 @ 9-11' SP  
 0 @ 14-16' SP  
 0 @ 19-21' SP  
 0 @ 24-26' SP  
 For @ 28' SP

MW-07  
 0 @ 0-49' SM-SP-CL-SP  
 BDL TPH @ 34'

MW-08  
 0 @ 0-19' SP  
 2 @ 19-21' SP  
 0 @ 21-46' SP/CL  
 BDL TPH @ 34'

MW-09  
 2.7 @ 0-4' CL  
 1.6 @ 4-6' CL  
 2.4 @ 6-8' CL  
 0.3 @ 8-10' SP  
 2.5 @ 10-12' SP  
 1.5 @ 12-14' SP  
 1 @ 14-19' SP/CL

MW-10  
 1.3 @ 4-6' CL  
 1.3 @ 4-11 CL  
 1.4 @ 11-13 ML  
 1.3 @ 13-15 ML  
 0.2 @ 15-17' PT  
 0.5 @ 17-19' CL  
 0.5 @ 19-21' CL  
 2.4 @ 21-23' CL

MW-11  
 0.0 @ 20-4' SM  
 0.0 @ 4-6' SM  
 0.0 @ 9-11' CL  
 15.8 @ 14-16' SP  
 10.0 @ 19-21 ML  
 13.2 @ 23-25 SM

MW-12  
 0.0 @ 20-4' SM  
 0.0 @ 4-6' SM  
 0.0 @ 9-11' CL  
 15.8 @ 14-16' SP  
 10.0 @ 19-21 ML  
 13.2 @ 23-25 SM

MW-13  
 0.0 @ 20-4' SM  
 0.0 @ 4-6' SM  
 0.0 @ 9-11' CL  
 15.8 @ 14-16' SP  
 10.0 @ 19-21 ML  
 13.2 @ 23-25 SM

TREATMENT BUILDING

SINCLAIR STATION  
223 EAST LARPEUTEUR

PUMP ISLANDS

CONCRETE

CONCRETE WALL

CURB

MW-01  
0.0 @ 0-36' BDL TPH  
Mostly ND

MH #1

VENT PIPES

PAY PHONE

OMH #2

CONCRETE WALL

SS

SANITARY/STORM SEWER MANHOLE

SS

SS

SS

SS

SS

SS

SS

SS

SS

SS

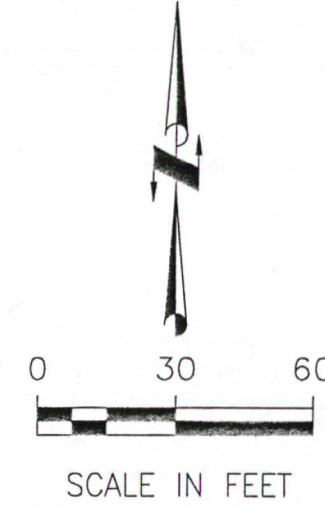
SS

SS

SS

SS

SS



- LEGEND
- MONITORING WELL LOCATION
  - ⊙ RECOVERY WELL LOCATION
  - SOIL BORING LOCATION
  - SOIL VENT LOCATION
  - E — OVERHEAD POWER LINES
  - SS — SANITARY/STORM SEWER

I 35 E EXIT RAMP

I 35 E ENTRANCE RAMP

**EnecoTech**  
 ENVIRONMENTAL CONSULTANTS

Project: SINCLAIR SERVICE STATION

5/90 Tanks Upgraded  
 11/90 3SB + 4 Wells  
 3/91 1SB + 2 Wells  
 8/91 2 Wells  
 1/92 1 Well  
 7/92 1 Recovery Well

GW Flow to SE  
 223 EAST LARPEUTEUR  
 MAPLEWOOD, MINNESOTA

LARPEUTEUR AVENUE

File No.: 711-010	ACAD No.: 711010U4	Drawn: MRP	Designed: BNJ	Checked: JTM	Approved: KML	Date: 2/95	Rev.: 10/14/99	FIG. NO.:
-------------------	--------------------	------------	---------------	--------------	---------------	------------	----------------	-----------