



1301 North Third Street
Superior, Wisconsin 54880
Phone: (715) 392-7114
Fax: (715) 392-7163

Facsimile Memorandum

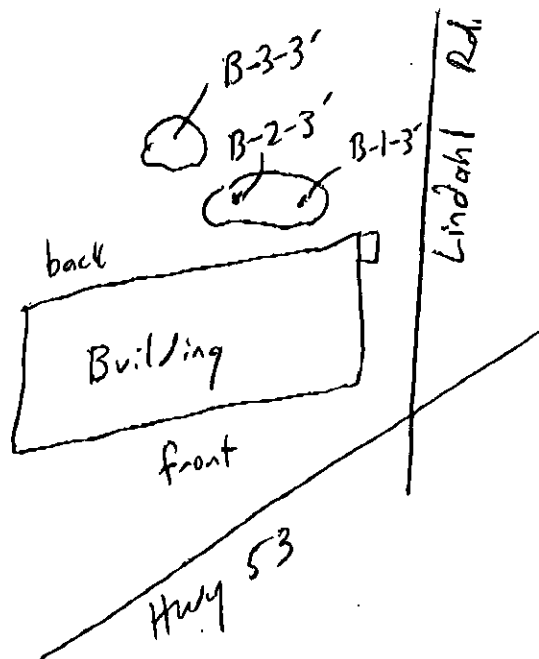
To: Wendy
From: Klete Fallowfield
Fax: 218-879-7270
Re:
Pages: 22 (including cover)

Attn:
Cc:
Phone:
Date: 9/1/06
TPT No: 06e2188

Urgent For Review Please Comment Please Reply

Wendy,

Here are the soil analytical results for the 4621 Lindahl Road property in Hermantown. Below is a sketch of where I took the samples from. I will be issuing Tom Riley a formal report early next week.





1241 Bellevue Street, Suite 9
Green Bay, WI 54302
920-469-2436, Fax: 920-469-8827

Analytical Report Number: 875354

Client: TWIN PORTS TESTING

Lab Contact: Eric Bullock

Project Name: PRUDENTIAL REALTORS

Project Number:

Lab Sample Number	Field ID	Matrix	Collection Date
875354-001	B-1-3'	SOIL	08/21/06 14:45
875354-002	B-2-3'	SOIL	08/21/06 15:15
875354-003	B-3-3'	SOIL	08/21/06 15:42
875354-004	TRIP BLANK	METH	08/21/06

MS/MSD: If the Form 3 header for the MS/MSD QC indicates that the MS/MSD was "Batch QC", then the MS/MSD results may not be directly applicable to your samples

I certify that the data contained in this Final Report has been generated and reviewed in accordance with approved methods and Laboratory Standard Operating Procedure. Exceptions, if any, are discussed in the accompanying sample comments. Release of this final report is authorized by Laboratory management, as is verified by the following signature. This report shall not be reproduced, except in full, without the written consent of Pace Analytical Services, Inc. The sample results relate only to the analytes of interest tested.

Approval Signature

8/28/06
Date

**Pace Analytical
Services, Inc.**

Analytical Report Number: 875354

1241 Bellevue Street
Green Bay, WI 54302
920-468-2436

Client : TWIN PORTS TESTING
Project Name : PRUDENTIAL REALTORS
Project Number :
Field ID : B-1-3'

Matrix Type : SOIL
Collection Date : 08/21/06
Report Date : 08/28/08
Lab Sample Number : 875354-001

INORGANICS

Test	Result	EQL	Dilution	Units	Code	Anl Date	Prep Method	Anl Method
Percent Solids	91.4	--	1	%		08/24/06	SM M2540G	SM M2540G

DIESEL RANGE ORGANICS

Prep Date: 08/24/06

Preservation Date: 08/24/08

Analyte	Result	EQL	Dilution	Units	Code	Anl Date	Prep Method	Anl Method
Diesel Range Organics	< 3.6	3.6	1	mg/kg	0	08/24/06	WI MOD DRO	WI MOD DRO

VOLATILES - MDH LIST

non-detect

Prep Date: 08/24/08

Analyte	Result	EQL	Dilution	Units	Code	Anl Date	Prep Method	Anl Method
1,1,1,2-Tetrachloroethane	< 55	55	50	ug/Kg		08/25/08	5035/5030B	SW846 8260B
1,1,1-Trichloroethane	< 55	55	50	ug/Kg		08/25/08	5035/5030B	SW846 8260B
1,1,2,2-Tetrachloroethane	< 55	55	50	ug/Kg		08/25/08	5035/5030B	SW846 8260B
1,1,2-Trichloroethane	< 55	55	50	ug/Kg		08/25/08	5035/5030B	SW846 8260B
1,1,2-Trichlorotrifluoroethane	< 55	55	50	ug/Kg		08/25/08	5035/5030B	SW846 8260B
1,1-Dichloroethane	< 55	55	50	ug/Kg		08/25/08	5035/5030B	SW846 8260B
1,1-Dichloroethene	< 55	55	50	ug/Kg		08/25/08	5035/5030B	SW846 8260B
1,1-Dichloropropene	< 55	55	50	ug/Kg		08/25/08	5035/5030B	SW846 8260B
1,2,3-Trichlorobenzene	< 55	55	50	ug/Kg		08/25/08	5035/5030B	SW846 8260B
1,2,3-Trichloropropane	< 55	55	50	ug/Kg		08/25/08	5035/5030B	SW846 8260B
1,2,4-Trichlorobenzene	< 55	55	50	ug/Kg		08/25/08	5035/5030B	SW846 8260B
1,2,4-Trimethylbenzene	< 55	55	50	ug/Kg		08/25/08	5035/5030B	SW846 8260B
1,2-Dibromo-3-chloropropane	< 110	110	50	ug/Kg		08/25/08	5035/5030B	SW846 8260B
1,2-Dibromoethane	< 55	55	50	ug/Kg		08/25/08	5035/5030B	SW846 8260B
1,2-Dichlorobenzene	< 55	55	50	ug/Kg		08/25/08	5035/5030B	SW846 8260B
1,2-Dichloroethane	< 55	55	50	ug/Kg		08/25/08	5035/5030B	SW846 8260B
1,2-Dichloropropane	< 55	55	50	ug/Kg		08/25/08	5035/5030B	SW846 8260B
1,3,5-Trimethylbenzene	< 55	55	50	ug/Kg		08/25/08	5035/5030B	SW846 8260B
1,3-Dichlorobenzene	< 55	55	50	ug/Kg		08/25/08	5035/5030B	SW846 8260B
1,3-Dichloropropane	< 55	55	50	ug/Kg		08/25/08	5035/5030B	SW846 8260B
1,4-Dichlorobenzene	< 55	55	50	ug/Kg		08/25/08	5035/5030B	SW846 8260B
2,2-Dichloropropane	< 55	55	50	ug/Kg		08/25/08	5035/5030B	SW846 8260B
2-Butanone	< 270	270	50	ug/Kg		08/25/08	5035/5030B	SW846 8260B
2-Chlorotoluene	< 55	55	50	ug/Kg		08/25/08	5035/5030B	SW846 8260B
4-Chlorotoluene	< 55	55	50	ug/Kg		08/25/08	5035/5030B	SW846 8260B
4-Methyl-2-pentanone	< 270	270	50	ug/Kg		08/25/08	5035/5030B	SW846 8260B
Acetone	< 270	270	50	ug/Kg		08/25/08	5035/5030B	SW846 8260B
Allyl Chloride	< 55	55	50	ug/Kg		08/25/08	5035/5030B	SW846 8260B
Benzene	< 55	55	50	ug/Kg		08/25/08	5035/5030B	SW846 8260B
Bromobenzene	< 55	55	50	ug/Kg		08/25/08	5035/5030B	SW846 8260B
Bromochloromethane	< 55	55	50	ug/Kg		08/25/08	5035/5030B	SW846 8260B
Bromodichloromethane	< 55	55	50	ug/Kg		08/25/08	5035/5030B	SW846 8260B
Bromoform	< 55	55	50	ug/Kg		08/25/08	5035/5030B	SW846 8260B
Bromomethane	< 55	55	50	ug/Kg		08/25/08	5035/5030B	SW846 8260B
Carbon Tetrachloride	< 55	55	50	ug/Kg		08/25/08	5035/5030B	SW846 8260B
Chlorobenzene	< 55	55	50	ug/Kg		08/25/08	5035/5030B	SW846 8260B
Chlorodibromomethane	< 55	55	50	ug/Kg		08/25/08	5035/5030B	SW846 8260B
Chloroethane	< 55	55	50	ug/Kg		08/25/08	5035/5030B	SW846 8260B
Chloroform	< 55	55	50	ug/Kg		08/25/08	5035/5030B	SW846 8260B
Chloromethane	< 55	55	50	ug/Kg		08/25/08	5035/5030B	SW846 8260B

All soil results are reported on a dry weight basis unless otherwise noted.

**Pace Analytical
Services, Inc.**

Analytical Report Number: 875354

1241 Bellevue Street
Green Bay, WI 54302
920-489-2436

Client: TWIN PORTS TESTING
Project Name: PRUDENTIAL REALTORS
Project Number:
Field ID: B-1-3'

Matrix Type: SOIL
Collection Date: 08/21/06
Report Date: 08/28/06
Lab Sample Number: 875354-001

VOLATILES - MDH LIST

Prep Date: 08/24/06

Analyte	Result	EQL	Dilution	Units	Code	Anl Date	Prep Method	Anl Method
cis-1,2-Dichloroethane	< 55	55	50	ug/Kg		08/25/06	5035/5030B	SW846 8260B
cis-1,3-Dichloropropene	< 55	55	50	ug/Kg		08/25/06	5035/5030B	SW846 8260B
Dibromomethane	< 55	55	50	ug/Kg		08/25/06	5035/5030B	SW846 8260B
Dichlorodifluoromethane	< 55	55	50	ug/Kg		08/25/06	5035/5030B	SW846 8260B
Dichlorofluoromethane	< 55	55	50	ug/Kg		08/25/06	5035/5030B	SW846 8260B
Diethyl Ether	< 55	55	50	ug/Kg		08/25/06	5035/5030B	SW846 8260B
Ethylbenzene	< 55	55	50	ug/Kg		08/25/06	5035/5030B	SW846 8260B
Fluorotrichloromethane	< 55	55	50	ug/Kg		08/25/06	5035/5030B	SW846 8260B
Hexachlorobutadiene	< 55	55	50	ug/Kg		08/25/06	5035/5030B	SW846 8260B
Isopropylbenzene	< 55	55	50	ug/Kg		08/25/06	5035/5030B	SW846 8260B
Methylene Chloride	< 55	55	50	ug/Kg		08/25/06	5035/5030B	SW846 8260B
Methyl-tert-butyl-ether	< 55	55	50	ug/Kg		08/25/06	5035/5030B	SW846 8260B
Naphthalene	< 55	55	50	ug/Kg		08/25/06	5035/5030B	SW846 8260B
n-Butylbenzene	< 55	55	50	ug/Kg		08/25/06	5035/5030B	SW846 8260B
n-Propylbenzene	< 55	55	50	ug/Kg		08/25/06	5035/5030B	SW846 8260B
p-Isopropyltoluene	< 55	55	50	ug/Kg		08/25/06	5035/5030B	SW846 8260B
s-Butylbenzene	< 55	55	50	ug/Kg		08/25/06	5035/5030B	SW846 8260B
Styrene	< 55	55	50	ug/Kg		08/25/06	5035/5030B	SW846 8260B
t-Butylbenzene	< 55	55	50	ug/Kg		08/25/06	5035/5030B	SW846 8260B
Tetrachloroethene	< 55	55	50	ug/Kg		08/25/06	5035/5030B	SW846 8260B
Tetrahydrofuran	< 270	270	50	ug/Kg		08/25/06	5035/5030B	SW846 8260B
Toluene	< 55	55	50	ug/Kg		08/25/06	5035/5030B	SW846 8260B
trans-1,2-Dichloroethane	< 55	55	50	ug/Kg		08/25/06	5035/5030B	SW846 8260B
trans-1,3-Dichloropropene	< 55	55	50	ug/Kg		08/25/06	5035/5030B	SW846 8260B
Trichloroethane	< 55	55	50	ug/Kg		08/25/06	5035/5030B	SW846 8260B
Vinyl Chloride	< 55	55	50	ug/Kg		08/25/06	5035/5030B	SW846 8260B
Xylene, o	< 55	55	50	ug/Kg		08/25/06	5035/5030B	SW846 8260B
Xylenes, m + p	< 110	110	50	ug/Kg		08/25/06	5035/5030B	SW846 8260B
Surrogate		LCL	UCL					
4-Bromofluorobenzene	93	64	133	50	%	08/25/06	5035/5030B	SW846 8260B
Toluene-d8	104	67	139	50	%	08/25/06	5035/5030B	SW846 8260B
Dibromofluoromethane	112	64	140	50	%	08/25/06	5035/5030B	SW846 8260B

All soil results are reported on a dry weight basis unless otherwise noted.

**Pace Analytical
Services, Inc.**

Analytical Report Number: 875354

1241 Bellevue Street
Green Bay, WI 54302
920-469-2436

Client : TWIN PORTS TESTING
Project Name : PRUDENTIAL REALTORS
Project Number :
Field ID : B-2-3'

Matrix Type : SOIL
Collection Date : 08/21/06
Report Date : 08/28/06
Lab Sample Number : 875354-002

INORGANICS

Test	Result	EQL	Dilution	Units	Code	Anl Date	Prep Method	Anl Method
Percent Solids	85.6	--	1	%		08/24/06	SM M2540G	SM M2540G

DIESEL RANGE ORGANICS

Prep Date: 08/24/06

Preservation Date: 08/24/06

Analyte	Result	EQL	Dilution	Units	Code	Anl Date	Prep Method	Anl Method
Diesel Range Organics	34	4.4	1	mg/kg	0	08/24/06	WI MOD DRO	WI MOD DRO

VOLATILES - MDH LIST

Detection

Prep Date: 08/24/06

Analyte	Result	EQL	Dilution	Units	Code	Anl Date	Prep Method	Anl Method
1,1,1,2-Tetrachloroethane	< 58	58	50	ug/Kg		08/24/06	5035/5030B	SW846 8260B
1,1,1-Trichloroethane	< 58	58	50	ug/Kg		08/24/06	5035/5030B	SW846 8260B
1,1,2,2-Tetrachloroethane	< 58	58	50	ug/Kg		08/24/06	5035/5030B	SW846 8260B
1,1,2-Trichloroethane	< 58	58	50	ug/Kg		08/24/06	5035/5030B	SW846 8260B
1,1,2-Trichlorotrifluoroethane	< 58	58	50	ug/Kg		08/24/06	5035/5030B	SW846 8260B
1,1-Dichloroethane	< 58	58	50	ug/Kg		08/24/06	5035/5030B	SW846 8260B
1,1-Dichloroethene	< 58	58	50	ug/Kg		08/24/06	5035/5030B	SW846 8260B
1,1-Dichloropropene	< 58	58	50	ug/Kg		08/24/06	5035/5030B	SW846 8260B
1,2,3-Trichlorobenzene	< 58	58	50	ug/Kg		08/24/06	5035/5030B	SW846 8260B
1,2,3-Trichloropropane	< 58	58	50	ug/Kg		08/24/06	5035/5030B	SW846 8260B
1,2,4-Trichlorobenzene	< 58	58	50	ug/Kg		08/24/06	5035/5030B	SW846 8260B
1,2,4-Trimethylbenzene	< 58	58	50	ug/Kg		08/24/06	5035/5030B	SW846 8260B
1,2-Dibromo-3-chloropropane	< 120	120	50	ug/Kg		08/24/06	5035/5030B	SW846 8260B
1,2-Dibromoethane	< 58	58	50	ug/Kg		08/24/06	5035/5030B	SW846 8260B
1,2-Dichlorobenzene	< 58	58	50	ug/Kg		08/24/06	5035/5030B	SW846 8260B
1,2-Dichloroethane	< 58	58	50	ug/Kg		08/24/06	5035/5030B	SW846 8260B
1,2-Dichloropropane	< 58	58	50	ug/Kg		08/24/06	5035/5030B	SW846 8260B
1,3,5-Trimethylbenzene	< 58	58	50	ug/Kg		08/24/06	5035/5030B	SW846 8260B
1,3-Dichlorobenzene	< 58	58	50	ug/Kg		08/24/06	5035/5030B	SW846 8260B
1,3-Dichloropropane	< 58	58	50	ug/Kg		08/24/06	5035/5030B	SW846 8260B
1,4-Dichlorobenzene	< 58	58	50	ug/Kg		08/24/06	5035/5030B	SW846 8260B
2,2-Dichloropropane	< 58	58	50	ug/Kg		08/24/06	5035/5030B	SW846 8260B
2-Butanone	< 290	290	50	ug/Kg		08/24/06	5035/5030B	SW846 8260B
2-Chlorotoluene	< 58	58	50	ug/Kg		08/24/06	5035/5030B	SW846 8260B
4-Chlorotoluene	< 58	58	50	ug/Kg		08/24/06	5035/5030B	SW846 8260B
4-Methyl-2-pentanone	< 290	290	50	ug/Kg		08/24/06	5035/5030B	SW846 8260B
Acetone	< 290	290	50	ug/Kg		08/24/06	5035/5030B	SW846 8260B
Allyl Chloride	< 58	58	50	ug/Kg		08/24/06	5035/5030B	SW846 8260B
Benzene	< 58	58	50	ug/Kg		08/24/06	5035/5030B	SW846 8260B
Bromobenzene	< 58	58	50	ug/Kg		08/24/06	5035/5030B	SW846 8260B
Bromochloromethane	< 58	58	50	ug/Kg		08/24/06	5035/5030B	SW846 8260B
Bromodichloromethane	< 58	58	50	ug/Kg		08/24/06	5035/5030B	SW846 8260B
Bromoform	< 58	58	50	ug/Kg		08/24/06	5035/5030B	SW846 8260B
Bromomethane	< 58	58	50	ug/Kg		08/24/06	5035/5030B	SW846 8260B
Carbon Tetrachloride	< 58	58	50	ug/Kg		08/24/06	5035/5030B	SW846 8260B
Chlorobenzene	< 58	58	50	ug/Kg		08/24/06	5035/5030B	SW846 8260B
Chlorodibromomethane	< 58	58	50	ug/Kg		08/24/06	5035/5030B	SW846 8260B
Chloroethane	< 58	58	50	ug/Kg		08/24/06	5035/5030B	SW846 8260B
Chloroform	< 58	58	50	ug/Kg		08/24/06	5035/5030B	SW846 8260B
Chloromethane	< 58	58	50	ug/Kg		08/24/06	5035/5030B	SW846 8260B

All soil results are reported on a dry weight basis unless otherwise noted.

**Pace Analytical
Services, Inc.**

Analytical Report Number: 875354

1241 Bellevue Street
Green Bay, WI 54302
920-469-2436

Client : TWIN PORTS TESTING
Project Name : PRUDENTIAL REALTORS
Project Number :
Field ID : B-2-3'

Matrix Type : SOIL
Collection Date : 08/21/06
Report Date : 08/28/06
Lab Sample Number : 875354-002

VOLATILES - MDH LIST

Prep Date: 08/24/06

Analyte	Result	EQL	Dilution	Units	Code	Anl Date	Prep Method	Anl Method
cis-1,2-Dichloroethene	< 58	58	50	ug/Kg		08/24/06	5035/5030B	SW846 8260B
cis-1,3-Dichloropropene	< 58	58	50	ug/Kg		08/24/06	5035/5030B	SW846 8260B
Dibromomethane	< 58	58	50	ug/Kg		08/24/06	5035/5030B	SW846 8260B
Dichlorodifluoromethane	< 58	58	50	ug/Kg		08/24/06	5035/5030B	SW846 8260B
Dichlorofluoromethane	< 58	58	50	ug/Kg		08/24/06	5035/5030B	SW846 8260B
Diethyl Ether	< 58	58	50	ug/Kg		08/24/06	5035/5030B	SW846 8260B
Ethylbenzene	< 58	58	50	ug/Kg		08/24/06	5035/5030B	SW846 8260B
Fluorotrichloromethane	< 58	58	50	ug/Kg		08/24/06	5035/5030B	SW846 8260B
Hexachlorobutadiene	< 58	58	50	ug/Kg		08/24/06	5035/5030B	SW846 8260B
Isopropylbenzene	< 58	58	50	ug/Kg		08/24/06	5035/5030B	SW846 8260B
Methylene Chloride	< 58	58	50	ug/Kg		08/24/06	5035/5030B	SW846 8260B
Methyl-tert-butyl-ether	< 58	58	50	ug/Kg		08/24/06	5035/5030B	SW846 8260B
Naphthalene	< 58	58	50	ug/Kg		08/24/06	5035/5030B	SW846 8260B
n-Butylbenzene	< 58	58	50	ug/Kg		08/24/06	5035/5030B	SW846 8260B
n-Propylbenzene	< 58	58	50	ug/Kg		08/24/06	5035/5030B	SW846 8260B
p-Isopropyltoluene	< 58	58	50	ug/Kg		08/24/06	5035/5030B	SW846 8260B
s-Butylbenzene	< 58	58	50	ug/Kg		08/24/06	5035/5030B	SW846 8260B
Styrene	< 58	58	50	ug/Kg		08/24/06	5035/5030B	SW846 8260B
t-Butylbenzene	< 58	58	50	ug/Kg		08/24/06	5035/5030B	SW846 8260B
Tetrachloroethene	< 58	58	50	ug/Kg		08/24/06	5035/5030B	SW846 8260B
Tetrahydrofuran	< 290	290	50	ug/Kg		08/24/06	5035/5030B	SW846 8260B
Toluene	< 58	58	50	ug/Kg		08/24/06	5035/5030B	SW846 8260B
trans-1,2-Dichloroethene	< 58	58	50	ug/Kg		08/24/06	5035/5030B	SW846 8260B
trans-1,3-Dichloropropene	< 58	58	50	ug/Kg		08/24/06	5035/5030B	SW846 8260B
Trichloroethene	< 58	58	50	ug/Kg		08/24/06	5035/5030B	SW846 8260B
Vinyl Chloride	< 58	58	50	ug/Kg		08/24/06	5035/5030B	SW846 8260B
Xylene, o	< 58	58	50	ug/Kg		08/24/06	5035/5030B	SW846 8260B
Xylenes, m + p	< 120	120	50	ug/Kg		08/24/06	5035/5030B	SW846 8260B
Surrogate		LCL	UCL					
4-Bromofluorobenzene	86	64	133	50 %		08/24/06	5035/5030B	SW846 8260B
Toluene-d8	98	67	139	50 %		08/24/06	5035/5030B	SW846 8260B
Dibromofluoromethane	104	64	140	50 %		08/24/06	5035/5030B	SW846 8260B

All soil results are reported on a dry weight basis unless otherwise noted.

**Pace Analytical
Services, Inc.**

Analytical Report Number: 875354

1241 Bellevue Street
Green Bay, WI 54302
920-469-2436

Client : TWIN PORTS TESTING
Project Name : PRUDENTIAL REALTORS
Project Number :
Field ID : B-3-3'

Matrix Type : SOIL
Collection Date : 08/21/06
Report Date : 08/28/06
Lab Sample Number : 875354-003

INORGANICS

Test	Result	EQL	Dilution	Units	Code	Anl Date	Prep Method	Anl Method
Percent Solids	89.0	---	1	%		08/24/06	SM M2540G	SM M2540G

DIESEL RANGE ORGANICS

Prep Date: 08/24/06

Preservation Date: 08/24/06

Analyte	Result	EQL	Dilution	Units	Code	Anl Date	Prep Method	Anl Method
Diesel Range Organics	63	22	1	mg/kg	0	08/24/06	WI MOD DRO	WI MOD DRO

VOLATILES - MDH LIST

Detection

Prep Date: 08/24/06

Analyte	Result	EQL	Dilution	Units	Code	Anl Date	Prep Method	Anl Method
1,1,1,2-Tetrachloroethane	< 56	56	50	ug/Kg		08/25/06	5035/5030B	SW846 8260B
1,1,1-Trichloroethane	< 56	56	50	ug/Kg		08/25/06	5035/5030B	SW846 8260B
1,1,2,2-Tetrachloroethane	< 56	56	50	ug/Kg		08/25/06	5035/5030B	SW846 8260B
1,1,2-Trichloroethane	< 56	56	50	ug/Kg		08/25/06	5035/5030B	SW846 8260B
1,1,2-Trichlorotrifluoroethane	< 56	56	50	ug/Kg		08/25/06	5035/5030B	SW846 8260B
1,1-Dichloroethane	< 56	56	50	ug/Kg		08/25/06	5035/5030B	SW846 8260B
1,1-Dichloroethene	< 56	56	50	ug/Kg		08/25/06	5035/5030B	SW846 8260B
1,1-Dichloropropene	< 56	56	50	ug/Kg		08/25/06	5035/5030B	SW846 8260B
1,2,3-Trichlorobenzene	< 56	56	50	ug/Kg		08/25/06	5035/5030B	SW846 8260B
1,2,3-Trichloropropane	< 56	56	50	ug/Kg		08/25/06	5035/5030B	SW846 8260B
1,2,4-Trichlorobenzene	< 56	56	50	ug/Kg		08/25/06	5035/5030B	SW846 8260B
1,2,4-Trimethylbenzene	< 56	56	50	ug/Kg		08/25/06	5035/5030B	SW846 8260B
1,2-Dibromo-3-chloropropane	< 110	110	50	ug/Kg		08/25/06	5035/5030B	SW846 8260B
1,2-Dibromoethane	< 56	56	50	ug/Kg		08/25/06	5035/5030B	SW846 8260B
1,2-Dichlorobenzene	< 56	56	50	ug/Kg		08/25/06	5035/5030B	SW846 8260B
1,2-Dichloroethane	< 56	56	50	ug/Kg		08/25/06	5035/5030B	SW846 8260B
1,2-Dichloropropane	< 56	56	50	ug/Kg		08/25/06	5035/5030B	SW846 8260B
1,3,5-Trimethylbenzene	< 56	56	50	ug/Kg		08/25/06	5035/5030B	SW846 8260B
1,3-Dichlorobenzene	< 56	56	50	ug/Kg		08/25/06	5035/5030B	SW846 8260B
1,3-Dichloropropane	< 56	56	50	ug/Kg		08/25/06	5035/5030B	SW846 8260B
1,4-Dichlorobenzene	< 56	56	50	ug/Kg		08/25/06	5035/5030B	SW846 8260B
2,2-Dichloropropane	< 56	56	50	ug/Kg		08/25/06	5035/5030B	SW846 8260B
2-Butanone	< 280	280	50	ug/Kg		08/25/06	5035/5030B	SW846 8260B
2-Chlorotoluene	< 56	56	50	ug/Kg		08/25/06	5035/5030B	SW846 8260B
4-Chlorotoluene	< 56	56	50	ug/Kg		08/25/06	5035/5030B	SW846 8260B
4-Methyl-2-pentanone	< 280	280	50	ug/Kg		08/25/06	5035/5030B	SW846 8260B
Acetone	< 280	280	50	ug/Kg		08/25/06	5035/5030B	SW846 8260B
Allyl Chloride	< 56	56	50	ug/Kg		08/25/06	5035/5030B	SW846 8260B
Benzene	< 56	56	50	ug/Kg		08/25/06	5035/5030B	SW846 8260B
Bromobenzene	< 56	56	50	ug/Kg		08/25/06	5035/5030B	SW846 8260B
Bromochloromethane	< 56	56	50	ug/Kg		08/25/06	5035/5030B	SW846 8260B
Bromodichloromethane	< 56	56	50	ug/Kg		08/25/06	5035/5030B	SW846 8260B
Bromoform	< 56	56	50	ug/Kg		08/25/06	5035/5030B	SW846 8260B
Bromomethane	< 56	56	50	ug/Kg		08/25/06	5035/5030B	SW846 8260B
Carbon Tetrachloride	< 56	56	50	ug/Kg		08/25/06	5035/5030B	SW846 8260B
Chlorobenzene	< 56	56	50	ug/Kg		08/25/06	5035/5030B	SW846 8260B
Chlorodibromomethane	< 56	56	50	ug/Kg		08/25/06	5035/5030B	SW846 8260B
Chloroethane	< 56	56	50	ug/Kg		08/25/06	5035/5030B	SW846 8260B
Chloroform	< 56	56	50	ug/Kg		08/25/06	5035/5030B	SW846 8260B
Chloromethane	< 56	56	50	ug/Kg		08/25/06	5035/5030B	SW846 8260B

All soil results are reported on a dry weight basis unless otherwise noted.

**Pace Analytical
Services, Inc.**

Analytical Report Number: 875354

1241 Bellevue Street
Green Bay, WI 54302
920-469-2436

Client : TWIN PORTS TESTING
Project Name : PRUDENTIAL REALTORS
Project Number :
Field ID : B-3-3'

Matrix Type : SOIL
Collection Date : 08/21/06
Report Date : 08/28/06
Lab Sample Number : 875354-003

VOLATILES - MDH LIST

Prep Date: 08/24/06

Analyte	Result	EQL	Dilution	Units	Code	Anl Date	Prep Method	Anl Method
cis-1,2-Dichloroethene	< 56	56	50	ug/Kg		08/25/06	5035/5030B	SW846 8260B
cis-1,3-Dichloropropene	< 56	56	50	ug/Kg		08/25/06	5035/5030B	SW846 8260B
Dibromomethane	< 56	56	50	ug/Kg		08/25/06	5035/5030B	SW846 8260B
Dichlorodifluoromethane	< 56	56	50	ug/Kg		08/25/06	5035/5030B	SW846 8260B
Dichlorofluoromethane	< 56	56	50	ug/Kg		08/25/06	5035/5030B	SW846 8260B
Diethyl Ether	< 56	56	50	ug/Kg		08/25/06	5035/5030B	SW846 8260B
Ethylbenzene	< 56	56	50	ug/Kg		08/25/06	5035/5030B	SW846 8260B
Fluorotrichloromethane	< 56	56	50	ug/Kg		08/25/06	5035/5030B	SW846 8260B
Hexachlorobutadiene	< 56	56	50	ug/Kg		08/25/06	5035/5030B	SW846 8260B
Isopropylbenzene	< 56	56	50	ug/Kg		08/25/06	5035/5030B	SW846 8260B
Methylene Chloride	< 56	56	50	ug/Kg		08/25/06	5035/5030B	SW846 8260B
Methyl-tert-butyl-ether	< 56	56	50	ug/Kg		08/25/06	5035/5030B	SW846 8260B
Naphthalene	< 56	56	50	ug/Kg		08/25/06	5035/5030B	SW846 8260B
n-Butylbenzene	< 56	56	50	ug/Kg		08/25/06	5035/5030B	SW846 8260B
n-Propylbenzene	< 56	56	50	ug/Kg		08/25/06	5035/5030B	SW846 8260B
p-Isopropyltoluene	< 56	56	50	ug/Kg		08/25/06	5035/5030B	SW846 8260B
s-Butylbenzene	< 56	56	50	ug/Kg		08/25/06	5035/5030B	SW846 8260B
Styrene	< 56	56	50	ug/Kg		08/25/06	5035/5030B	SW846 8260B
t-Butylbenzene	< 56	56	50	ug/Kg		08/25/06	5035/5030B	SW846 8260B
Tetrachloroethene	< 56	56	50	ug/Kg		08/25/06	5035/5030B	SW846 8260B
Tetrahydrofuran	< 280	280	50	ug/Kg		08/25/06	5035/5030B	SW846 8260B
Toluene	< 56	56	50	ug/Kg		08/25/06	5035/5030B	SW846 8260B
trans-1,2-Dichloroethene	< 56	56	50	ug/Kg		08/25/06	5035/5030B	SW846 8260B
trans-1,3-Dichloropropene	< 56	56	50	ug/Kg		08/25/06	5035/5030B	SW846 8260B
Trichloroethene	< 56	56	50	ug/Kg		08/25/06	5035/5030B	SW846 8260B
Vinyl Chloride	< 56	56	50	ug/Kg		08/25/06	5035/5030B	SW846 8260B
Xylene, o	< 56	56	50	ug/Kg		08/25/06	5035/5030B	SW846 8260B
Xylenes, m + p	< 110	110	50	ug/Kg		08/25/06	5035/5030B	SW846 8260B
Surrogate		LCL	UCL					
4-Bromofluorobenzene	90	64	133	50 %		08/25/06	5038/5030B	SW846 8260B
Toluene-d8	98	67	139	50 %		08/25/06	5035/5030B	SW846 8260B
Dibromofluoromethane	113	64	140	50 %		08/25/06	5035/5030B	SW846 8260B

All soil results are reported on a dry weight basis unless otherwise noted.

**Pace Analytical
Services, Inc.**

Analytical Report Number: 875354

1241 Bellevue Street
Green Bay, WI 54302
920-469-2436

Client : TWIN PORTS TESTING
Project Name : PRUDENTIAL REALTORS
Project Number :
Field ID : TRIP BLANK

Matrix Type : METHANOL
Collection Date : 08/21/08
Report Date : 08/28/08
Lab Sample Number : 875354-004

VOLATILES - MDH LIST

Prep Date: 08/24/06

Analyte	Result	EQL	Dilution	Units	Code	Anl Date	Prep Method	Anl Method
1,1,1,2-Tetrachloroethane	< 50	50	50	ug/L		08/24/08	SW846 5030B	SW846 8260B
1,1,1-Trichloroethane	< 50	50	50	ug/L		08/24/08	SW846 5030B	SW846 8260B
1,1,2,2-Tetrachloroethane	< 50	50	50	ug/L		08/24/08	SW846 5030B	SW846 8260B
1,1,2-Trichloroethane	< 50	50	50	ug/L		08/24/08	SW846 5030B	SW846 8260B
1,1,2-Trichlorotrifluoroethane	< 50	50	50	ug/L		08/24/08	SW846 5030B	SW846 8260B
1,1-Dichloroethane	< 50	50	50	ug/L		08/24/08	SW846 5030B	SW846 8260B
1,1-Dichloroethene	< 50	50	50	ug/L		08/24/08	SW846 5030B	SW846 8260B
1,1-Dichloropropene	< 50	50	50	ug/L		08/24/08	SW846 5030B	SW846 8260B
1,2,3-Trichlorobenzene	< 50	50	50	ug/L		08/24/08	SW846 5030B	SW846 8260B
1,2,3-Trichloropropane	< 50	50	50	ug/L		08/24/08	SW846 5030B	SW846 8260B
1,2,4-Trichlorobenzene	< 50	50	50	ug/L		08/24/08	SW846 5030B	SW846 8260B
1,2,4-Trimethylbenzene	< 50	50	50	ug/L		08/24/08	SW846 5030B	SW846 8260B
1,2-Dibromo-3-chloropropane	< 100	100	50	ug/L		08/24/08	SW846 5030B	SW846 8260B
1,2-Dibromoethane	< 50	50	50	ug/L		08/24/08	SW846 5030B	SW846 8260B
1,2-Dichlorobenzene	< 50	50	50	ug/L		08/24/08	SW846 5030B	SW846 8260B
1,2-Dichloroethane	< 50	50	50	ug/L		08/24/08	SW846 5030B	SW846 8260B
1,2-Dichloropropane	< 50	50	50	ug/L		08/24/08	SW846 5030B	SW846 8260B
1,3,5-Trimethylbenzene	< 50	50	50	ug/L		08/24/08	SW846 5030B	SW846 8260B
1,3-Dichlorobenzene	< 50	50	50	ug/L		08/24/08	SW846 5030B	SW846 8260B
1,3-Dichloropropane	< 50	50	50	ug/L		08/24/08	SW846 5030B	SW846 8260B
1,4-Dichlorobenzene	< 50	50	50	ug/L		08/24/08	SW846 5030B	SW846 8260B
2,2-Dichloropropane	< 50	50	50	ug/L		08/24/08	SW846 5030B	SW846 8260B
2-Butanone	< 250	250	50	ug/L		08/24/08	SW846 5030B	SW846 8260B
2-Chlorotoluene	< 50	50	50	ug/L		08/24/08	SW846 5030B	SW846 8260B
4-Chlorotoluene	< 50	50	50	ug/L		08/24/08	SW846 5030B	SW846 8260B
4-Methyl-2-pentanone	< 250	250	50	ug/L		08/24/08	SW846 5030B	SW846 8260B
Acetone	< 250	250	50	ug/L		08/24/08	SW846 5030B	SW846 8260B
Allyl Chloride	< 50	50	50	ug/L		08/24/08	SW846 5030B	SW846 8260B
Benzene	< 50	50	50	ug/L		08/24/08	SW846 5030B	SW846 8260B
Bromobenzene	< 50	50	50	ug/L		08/24/08	SW846 5030B	SW846 8260B
Bromochloromethane	< 50	50	50	ug/L		08/24/08	SW846 5030B	SW846 8260B
Bromodichloromethane	< 50	50	50	ug/L		08/24/08	SW846 5030B	SW846 8260B
Bromoform	< 50	50	50	ug/L		08/24/08	SW846 5030B	SW846 8260B
Bromomethane	< 50	50	50	ug/L		08/24/08	SW846 5030B	SW846 8260B
Carbon Tetrachloride	< 50	50	50	ug/L		08/24/08	SW846 5030B	SW846 8260B
Chlorobenzene	< 50	50	50	ug/L		08/24/08	SW846 5030B	SW846 8260B
Chlorodibromomethane	< 50	50	50	ug/L		08/24/08	SW846 5030B	SW846 8260B
Chloroethane	< 50	50	50	ug/L		08/24/08	SW846 5030B	SW846 8260B
Chloroform	< 50	50	50	ug/L		08/24/08	SW846 5030B	SW846 8260B
Chloromethane	< 50	50	50	ug/L		08/24/08	SW846 5030B	SW846 8260B
cis-1,2-Dichloroethene	< 50	50	50	ug/L		08/24/08	SW846 5030B	SW846 8260B
cis-1,3-Dichloropropene	< 50	50	50	ug/L		08/24/08	SW846 5030B	SW846 8260B
Dibromomethane	< 50	50	50	ug/L		08/24/08	SW846 5030B	SW846 8260B
Dichlorodifluoromethane	< 50	50	50	ug/L		08/24/08	SW846 5030B	SW846 8260B
Dichlorofluoromethane	< 50	50	50	ug/L		08/24/08	SW846 5030B	SW846 8260B
Diethyl Ether	< 50	50	50	ug/L		08/24/08	SW846 5030B	SW846 8260B
Ethylbenzene	< 50	50	50	ug/L		08/24/08	SW846 5030B	SW846 8260B
Fluorotrifluoromethane	< 50	50	50	ug/L		08/24/08	SW846 5030B	SW846 8260B

**Pace Analytical
Services, Inc.**

Analytical Report Number: 875354

1241 Bellevue Street
Green Bay, WI 54302
920-469-2436

Client: TWIN PORTS TESTING
Project Name: PRUDENTIAL REALTORS
Project Number:
Field ID: TRIP BLANK

Matrix Type: METHANOL
Collection Date: 08/21/06
Report Date: 08/28/06
Lab Sample Number: 875354-004

VOLATILES - MDH LIST

Prep Date: 08/24/06

Analyte	Result	EQL	Dilution	Units	Code	Anl Date	Prep Method	Anl Method
Hexachlorobutadiene	< 50	50	50	ug/L		08/24/06	SW846 5030B	SW846 8260B
Isopropylbenzene	< 50	50	50	ug/L		08/24/06	SW846 5030B	SW846 8260B
Methylene Chloride	< 50	50	50	ug/L		08/24/06	SW846 5030B	SW846 8260B
Methyl-tert-butyl-ether	< 50	50	50	ug/L		08/24/06	SW846 5030B	SW846 8260B
Naphthalene	< 50	50	50	ug/L		08/24/06	SW846 5030B	SW846 8260B
n-Butylbenzene	< 50	50	50	ug/L		08/24/06	SW846 5030B	SW846 8260B
n-Propylbenzene	< 50	50	50	ug/L		08/24/06	SW846 5030B	SW846 8260B
p-Isopropyltoluene	< 50	50	50	ug/L		08/24/06	SW846 5030B	SW846 8260B
s-Butylbenzene	< 50	50	50	ug/L		08/24/06	SW846 5030B	SW846 8260B
Styrene	< 50	50	50	ug/L		08/24/06	SW846 5030B	SW846 8260B
t-Butylbenzene	< 50	50	50	ug/L		08/24/06	SW846 5030B	SW846 8260B
Tetrachloroethene	< 50	50	50	ug/L		08/24/06	SW846 5030B	SW846 8260B
Tetrahydrofuran	< 250	250	50	ug/L		08/24/06	SW846 5030B	SW846 8260B
Toluene	< 50	50	50	ug/L		08/24/06	SW846 5030B	SW846 8260B
trans-1,2-Dichloroethene	< 50	50	50	ug/L		08/24/06	SW846 5030B	SW846 8260B
trans-1,3-Dichloropropene	< 50	50	50	ug/L		08/24/06	SW846 5030B	SW846 8260B
Trichloroethene	< 50	50	50	ug/L		08/24/06	SW846 5030B	SW846 8260B
Vinyl Chloride	< 50	50	50	ug/L		08/24/06	SW846 5030B	SW846 8260B
Xylene, o	< 50	50	50	ug/L		08/24/06	SW846 5030B	SW846 8260B
Xylenes, m + p	< 100	100	50	ug/L		08/24/06	SW846 5030B	SW846 8260B
Surrogate		LCL	UCL					
4-Bromofluorobenzene	86	64	133	50 %		08/24/06	SW846 5030B	SW846 8260B
Toluene-d8	86	67	139	50 %		08/24/06	SW846 5030B	SW846 8260B
Dibromofluoromethane	103	64	140	50 %		08/24/06	SW846 5030B	SW846 8260B

**Pace Analytical
Services, Inc.**1241 Bellevue Street
Green Bay, WI 54302
920-469-2436
Fax: 920-469-8827

Lab Number	TestGroupID	Field ID	Comment
875354-001	DRO-S	B-1-3'	Results for analysis taken from a sub sampled portion. This does not conform to required sampling techniques.
875354-002	DRO-S	B-2-3'	Results for analysis taken from a sub sampled portion. This does not conform to required sampling techniques.
875354-002	DRO-S	B-2-3'	Late eluting hump along with diesel range peaks were present in the chromatogram.
875354-003	465-S-ME	B-3-3'	Sample received overweight (20.0 grams).
875354-003	DRO-S	B-3-3'	Results for analysis taken from a sub sampled portion. This does not conform to required sampling techniques.
875354-003	DRO-S	B-3-3'	Late eluting hump along with diesel range peaks were present in the chromatogram.

Qualifier Codes

Flag	Applies To	Explanation
A	Inorganic	Analyte is detected in the method blank. Method blank criteria is evaluated to the laboratory method detection limit. Additionally, method blank acceptance may be based on project specific criteria or determined from analyte concentrations in the sample and are evaluated on a sample by sample basis.
B	Inorganic	The analyte has been detected between the method detection limit and the reporting limit.
B	Organic	Analyte is present in the method blank. Method blank criteria is evaluated to the laboratory method detection limit. Additionally, method blank acceptance may be based on project specific criteria or determined from analyte concentrations in the sample and are evaluated on a sample by sample basis.
C	All	Elevated detection limit.
D	All	Analyte value from diluted analysis or surrogate result not applicable due to sample dilution.
E	Inorganic	Estimated concentration due to matrix interferences. During the metals analysis the serial dilution failed to meet the established control limits of 0-10%. The sample concentration is greater than 50 times the IDL for analysis done on the ICP or 100 times the IDL for analysis done on the ICP-MS. The result was flagged with the E qualifier to indicate that a physical interference was observed.
E	Organic	Analyte concentration exceeds calibration range.
F	Inorganic	Due to potential interferences for this analysis by Inductively Coupled Plasma techniques (SW-846 Method 6010), this analyte has been confirmed by and reported from an alternate method.
F	Organic	Surrogate results outside control criteria.
G	All	The result is estimated because the concentration is less than the lowest calibration standard concentration utilized in the initial calibration. The method detection limit is less than the reporting limit specified for this project.
H	All	Preservation, extraction or analysis performed past holding time.
HF	Inorganic	This test is considered a field parameter, and the recommended holding time is 15 minutes from collection. The analysis was performed in the laboratory beyond the recommended holding time.
J	All	Concentration detected equal to or greater than the method detection limit but less than the reporting limit.
K	Inorganic	Sample received unpreserved. Sample was either preserved at the time of receipt or at the time of sample preparation.
K	Organic	Detection limit may be elevated due to the presence of an unrequested analyte.
L	All	Elevated detection limit due to low sample volume.
M	Organic	Sample pH was greater than 2
N	All	Spiked sample recovery not within control limits.
O	Organic	Sample received overweight.
P	Organic	The relative percent difference between the two columns for detected concentrations was greater than 40%.
Q	All	The analyte has been detected between the limit of detection (LOD) and limit of quantitation (LOQ). The results are qualified due to the uncertainty of analyte concentrations within this range.
S	Organic	The relative percent difference between quantitation and confirmation columns exceeds internal quality control criteria. Because the result is unconfirmed, it has been reported as a non-detect with an elevated detection limit.
U	All	The analyte was not detected at or above the reporting limit.
V	All	Sample received with headspace.
W	All	A second aliquot of sample was analyzed from a container with headspace.
X	All	See Sample Narrative.
Z	Organics	This compound was separated in the check standard but it did not meet the resolution criteria as set forth in SW846.
&	All	Laboratory Control Spike recovery not within control limits.
-	All	Precision not within control limits.
+	Inorganic	The sample result is greater than four times the spike level; therefore, the percent recovery is not evaluated.
<	All	The analyte was not detected at or above the reporting limit.
1	Inorganic	Dissolved analyte or filtered analyte greater than total analyte; analyses passed QC based on precision criteria.
2	Inorganic	Dissolved analyte or filtered analyte greater than total analyte; analyses failed QC based on precision criteria.
3	Inorganic	BOD result is estimated due to the BOD blank exceeding the allowable oxygen depletion.
4	Inorganic	BOD duplicate precision not within control limits. Due to the 48 hour holding time for this test, it is not practical to reanalyze and try to correct the deficiency.
5	Inorganic	BOD result is estimated due to insufficient oxygen depletion. Due to the 48 hour holding time for this test, it is not practical to reanalyze and try to correct the deficiency.
6	Inorganic	BOD laboratory control sample not within control limits. Due to the 48 hour holding time for this test, it is not practical to reanalyze and try to correct the deficiency.
7	Inorganic	BOD result is estimated due to complete oxygen depletion. Due to the 48 hour holding time for this test, it is not practical to reanalyze and try to correct the deficiency.



1241 Bellevue Street, Suite 9
Green Bay, WI 54302
920-469-2435, Fax: 920-469-8827

Analytical Report Number: 875354

Client: TWIN PORTS TESTING

Lab Contact: Eric Bullock


Project Name: PRUDENTIAL REALTORS

Project Number:

Lab Sample Number	Field ID	Matrix	Collection Date
875354-001	B-1-3'	SOIL	08/21/06 14:45
875354-002	B-2-3'	SOIL	08/21/06 15:15
875354-003	B-3-3'	SOIL	08/21/06 15:42
875354-004	TRIP BLANK	METH	08/21/06

MS/MSD: If the Form 3 header for the MS/MSD QC indicates that the MS/MSD was "Batch QC", then the MS/MSD results may not be directly applicable to your samples

I certify that the data contained in this Final Report has been generated and reviewed in accordance with approved methods and Laboratory Standard Operating Procedures. Exceptions, if any, are discussed in the accompanying sample comments. Release of this final report is authorized by Laboratory management as is verified by the following signature. This report shall not be reproduced, except in full, without the written consent of Pace Analytical Services, Inc. The sample results relate only to the analytes of interest tested.


Approval Signature

8/28/06
Date

Pace Analytical
Services, Inc.

Analytical Report Number: 875354

1241 Bellevue Street
Green Bay, WI 54302
920-469-2438Client: TWIN PORTS TESTING
Project Name: PRUDENTIAL REALTORS
Project Number:
Field ID: B-1-3'Matrix Type: SOIL
Collection Date: 08/21/06
Report Date: 08/28/06
Lab Sample Number: 875354-001

INORGANICS

Test	Result	EQL	Dilution	Units	Code	Anl Date	Prep Method	Anl Method
Percent Solids	91.4	--	1	%		08/24/06	SM M2540G	SM M2540G

DIESEL RANGE ORGANICS

Analyte	Result	EQL	Prep Date: 08/24/06		Code	Anl Date	Prep Method	Anl Method
			Dilution	Units				
Diesel Range Organics	< 3.6	3.6	1	mg/kg	O	08/24/06	WI MOD DRO	WI MOD DRO

VOLATILES - MDH LIST

Analyte	Result	EQL	Prep Date: 08/24/06		Code	Anl Date	Prep Method	Anl Method
			Dilution	Units				
1,1,1,2-Tetrachloroethane	< 55	55	50	ug/Kg		08/25/06	5035/5030B	SW846 8260B
1,1,1-Trichloroethane	< 55	55	50	ug/Kg		08/25/06	5035/5030B	SW846 8260B
1,1,2,2-Tetrachloroethane	< 55	55	50	ug/Kg		08/25/06	5035/5030B	SW846 8260B
1,1,2-Trichloroethane	< 55	55	50	ug/Kg		08/25/06	5035/5030B	SW846 8260B
1,1,2-Trichlorotrifluoroethane	< 55	55	50	ug/Kg		08/25/06	5035/5030B	SW846 8260B
1,1-Dichloroethane	< 55	55	50	ug/Kg		08/25/06	5035/5030B	SW846 8260B
1,1-Dichloroethene	< 55	55	50	ug/Kg		08/25/06	5035/5030B	SW846 8260B
1,1-Dichloropropene	< 55	55	50	ug/Kg		08/25/06	5035/5030B	SW846 8260B
1,2,3-Trichlorobenzene	< 55	55	50	ug/Kg		08/25/06	5035/5030B	SW846 8260B
1,2,3-Trichloropropane	< 55	55	50	ug/Kg		08/25/06	5035/5030B	SW846 8260B
1,2,4-Trichlorobenzene	< 55	55	50	ug/Kg		08/25/06	5035/5030B	SW846 8260B
1,2,4-Trimethylbenzene	< 55	55	50	ug/Kg		08/25/06	5035/5030B	SW846 8260B
1,2-Dibromo-3-chloropropane	< 110	110	50	ug/Kg		08/25/06	5035/5030B	SW846 8260B
1,2-Dibromoethane	< 65	65	50	ug/Kg		08/25/06	5035/5030B	SW846 8260B
1,2-Dichlorobenzene	< 55	55	50	ug/Kg		08/25/06	5035/5030B	SW846 8260B
1,2-Dichloroethane	< 55	55	50	ug/Kg		08/25/06	5035/5030B	SW846 8260B
1,2-Dichloropropane	< 55	55	50	ug/Kg		08/25/06	5035/5030B	SW846 8260B
1,3,5-Trimethylbenzene	< 55	55	50	ug/Kg		08/25/06	5035/5030B	SW846 8260B
1,3-Dichlorobenzene	< 55	55	50	ug/Kg		08/25/06	5035/5030B	SW846 8260B
1,3-Dichloropropane	< 55	55	50	ug/Kg		08/25/06	5035/5030B	SW846 8260B
1,4-Dichlorobenzene	< 55	55	50	ug/Kg		08/25/06	5035/5030B	SW846 8260B
2,2-Dichloropropane	< 55	55	50	ug/Kg		08/25/06	5035/5030B	SW846 8260B
2-Butenone	< 270	270	50	ug/Kg		08/25/06	5035/5030B	SW846 8260B
2-Chlorotoluene	< 55	55	50	ug/Kg		08/25/06	5035/5030B	SW846 8260B
4-Chlorotoluene	< 55	55	50	ug/Kg		08/25/06	5035/5030B	SW846 8260B
4-Methyl-2-pentanone	< 270	270	50	ug/Kg		08/25/06	5035/5030B	SW846 8260B
Acetone	< 270	270	50	ug/Kg		08/25/06	5035/5030B	SW846 8260B
Allyl Chloride	< 55	55	50	ug/Kg		08/25/06	5035/5030B	SW846 8260B
Benzene	< 55	55	50	ug/Kg		08/25/06	5035/5030B	SW846 8260B
Bromobenzene	< 55	55	50	ug/Kg		08/25/06	5035/5030B	SW846 8260B
Bromochloromethane	< 55	55	50	ug/Kg		08/25/06	5035/5030B	SW846 8260B
Bromodichloromethane	< 55	55	50	ug/Kg		08/25/06	5035/5030B	SW846 8260B
Bromoforn	< 55	55	50	ug/Kg		08/25/06	5035/5030B	SW846 8260B
Bromomethane	< 55	55	50	ug/Kg		08/25/06	5035/5030B	SW846 8260B
Carbon Tetrachloride	< 55	55	50	ug/Kg		08/25/06	5035/5030B	SW846 8260B
Chlorobenzene	< 55	55	50	ug/Kg		08/25/06	5035/5030B	SW846 8260B
Chlorodibromomethane	< 55	55	50	ug/Kg		08/25/06	5035/5030B	SW846 8260B
Chloroethane	< 55	55	50	ug/Kg		08/25/06	5035/5030B	SW846 8260B
Chloroform	< 55	55	50	ug/Kg		08/25/06	5035/5030B	SW846 8260B
Chloromethane	< 55	55	50	ug/Kg		08/25/06	5035/5030B	SW846 8260B

All soil results are reported on a dry weight basis unless otherwise noted.

Pace Analytical Services, Inc.

Analytical Report Number: 875354

1241 Bellevue Street
Green Bay, WI 54302
920-469-2436

Client : TWIN PORTS TESTING
Project Name : PRUDENTIAL REALTORS
Project Number :
Field ID : B-1-3

Matrix Type : SOIL
Collection Date : 08/21/06
Report Date : 08/28/06
Lab Sample Number : 875354-001

VOLATILES - MDH LIST

Prep Date: 08/24/06

Analyte	Result	EQL	Dilution	Units	Code	Anl Date	Prep Method	Anl Method
cis-1,2-Dichloroethene	< 55	55	50	ug/Kg		08/25/06	5035/5030B	SW846 8260B
cis-1,3-Dichloropropene	< 55	55	50	ug/Kg		08/25/06	5035/5030B	SW846 8260B
Dibromomethane	< 55	55	50	ug/Kg		08/25/06	5035/5030B	SW846 8260B
Dichlorodifluoromethane	< 55	55	50	ug/Kg		08/25/06	5035/5030B	SW846 8260B
Dichlorofluoromethane	< 55	55	50	ug/Kg		08/25/06	5035/5030B	SW846 8260B
Diethyl Ether	< 55	55	50	ug/Kg		08/25/06	5035/5030B	SW846 8260B
Ethylbenzene	< 55	55	50	ug/Kg		08/25/06	5035/5030B	SW846 8260B
Fluorotrichloromethane	< 55	55	50	ug/Kg		08/25/06	5035/5030B	SW846 8260B
Hexachlorobutadiene	< 55	55	50	ug/Kg		08/25/06	5035/5030B	SW846 8260B
Isopropylbenzene	< 55	55	50	ug/Kg		08/25/06	5035/5030B	SW846 8260B
Methylene Chloride	< 55	55	50	ug/Kg		08/25/06	5035/5030B	SW846 8260B
Methyl-tert-butyl-ether	< 55	55	50	ug/Kg		08/25/06	5035/5030B	SW846 8260B
Naphthalene	< 55	55	50	ug/Kg		08/25/06	5035/5030B	SW846 8260B
n-Butylbenzene	< 55	55	50	ug/Kg		08/25/06	5035/5030B	SW846 8260B
n-Propylbenzene	< 55	55	50	ug/Kg		08/25/06	5035/5030B	SW846 8260B
p-Isopropyltoluene	< 55	55	50	ug/Kg		08/25/06	5035/5030B	SW846 8260B
s-Butylbenzene	< 55	55	50	ug/Kg		08/25/06	5035/5030B	SW846 8260B
Styrene	< 55	55	50	ug/Kg		08/25/06	5035/5030B	SW846 8260B
t-Butylbenzene	< 55	55	50	ug/Kg		08/25/06	5035/5030B	SW846 8260B
Tetrachloroethene	< 55	55	50	ug/Kg		08/25/06	5035/5030B	SW846 8260B
Tetrahydrofuran	< 270	270	50	ug/Kg		08/25/06	5035/5030B	SW846 8260B
Toluene	< 55	55	50	ug/Kg		08/25/06	5035/5030B	SW846 8260B
trans-1,2-Dichloroethene	< 55	55	50	ug/Kg		08/25/06	5035/5030B	SW846 8260B
trans-1,3-Dichloropropene	< 55	55	50	ug/Kg		08/25/06	5035/5030B	SW846 8260B
Trichloroethene	< 55	55	50	ug/Kg		08/25/06	5035/5030B	SW846 8260B
Vinyl Chloride	< 55	55	50	ug/Kg		08/25/06	5035/5030B	SW846 8260B
Xylene, o	< 55	55	50	ug/Kg		08/25/06	5035/5030B	SW846 8260B
Xylenes, m + p	< 110	110	50	ug/Kg		08/25/06	5035/5030B	SW846 8260B
Surrogate		LCL	UCL					
4-Bromofluorobenzene	93	64	133	50 %		08/25/06	5035/5030B	SW846 8260B
Toluene-d8	104	67	139	50 %		08/25/06	5035/5030B	SW846 8260B
Dibromofluoromethane	112	64	140	50 %		08/25/06	5035/5030B	SW846 8260B

All soil results are reported on a dry weight basis unless otherwise noted.

Pace Analytical
Services, Inc.

Analytical Report Number: 875354

1241 Bellevue Street
Green Bay, WI 54302
920-469-2438Client : TWIN PORTS TESTING
Project Name : PRUDENTIAL REALTORS
Project Number :
Field ID : B-2-3'Matrix Type : SOIL
Collection Date : 08/21/06
Report Date : 08/28/06
Lab Sample Number : 875354-002

INORGANICS

Test	Result	EQL	Dilution	Units	Code	Anl Date	Prep Method	Anl Method
Percent Solids	85.6	—	1	%		08/24/06	SM M2540G	6M M2540G

DIESEL RANGE ORGANICS

Analyte	Result	EQL	Dilution	Units	Code	Anl Date	Prep Method	Anl Method	Prep Date: 08/24/06		Preservation Date: 08/24/06	
Diesel Range Organics	34	4.4	1	mg/kg	O	08/24/06	WI MOD DRO	WI MOD DRO				

VOLATILES - MDH LIST

Analyte	Result	EQL	Dilution	Units	Code	Anl Date	Prep Method	Anl Method	Prep Date: 08/24/06	
1,1,1,2-Tetrachloroethane	< 58	58	50	ug/Kg		08/24/06	5035/5030B	SW846 8260B		
1,1,1-Trichloroethane	< 58	58	50	ug/Kg		08/24/06	5035/5030B	SW846 8260B		
1,1,2,2-Tetrachloroethane	< 58	58	50	ug/Kg		08/24/06	5035/5030B	SW846 8260B		
1,1,2-Trichloroethane	< 58	58	50	ug/Kg		08/24/06	5035/5030B	SW846 8260B		
1,1,2-Trichloroethane	< 58	58	50	ug/Kg		08/24/06	5035/5030B	SW846 8260B		
1,1-Dichloroethane	< 58	58	50	ug/Kg		08/24/06	5035/5030B	SW846 8260B		
1,1-Dichloroethane	< 58	58	50	ug/Kg		08/24/06	5035/5030B	SW846 8260B		
1,1-Dichloropropene	< 58	58	50	ug/Kg		08/24/06	5035/5030B	SW846 8260B		
1,2,3-Trichlorobenzene	< 58	58	50	ug/Kg		08/24/06	5035/5030B	SW846 8260B		
1,2,3-Trichloropropane	< 58	58	50	ug/Kg		08/24/06	5035/5030B	SW846 8260B		
1,2,4-Trichlorobenzene	< 58	58	50	ug/Kg		08/24/06	5035/5030B	SW846 8260B		
1,2,4-Trimethylbenzene	< 58	58	50	ug/Kg		08/24/06	5035/5030B	SW846 8260B		
1,2-Dibromo-3-chloropropane	< 120	120	50	ug/Kg		08/24/06	5035/5030B	SW846 8260B		
1,2-Dibromoethane	< 58	58	50	ug/Kg		08/24/06	5035/5030B	SW846 8260B		
1,2-Dichlorobenzene	< 58	58	50	ug/Kg		08/24/06	5035/5030B	SW846 8260B		
1,2-Dichloroethane	< 58	58	50	ug/Kg		08/24/06	5035/5030B	SW846 8260B		
1,2-Dichloropropane	< 58	58	50	ug/Kg		08/24/06	5035/5030B	SW846 8260B		
1,3,5-Trimethylbenzene	< 58	58	50	ug/Kg		08/24/06	5035/5030B	SW846 8260B		
1,3-Dichlorobenzene	< 58	58	50	ug/Kg		08/24/06	5035/5030B	SW846 8260B		
1,3-Dichloropropane	< 58	58	50	ug/Kg		08/24/06	5035/5030B	SW846 8260B		
1,4-Dichlorobenzene	< 58	58	50	ug/Kg		08/24/06	5035/5030B	SW846 8260B		
2,2-Dichloropropane	< 58	58	50	ug/Kg		08/24/06	5035/5030B	SW846 8260B		
2-Butanone	< 290	290	50	ug/Kg		08/24/06	5035/5030B	SW846 8260B		
2-Chlorotoluene	< 58	58	50	ug/Kg		08/24/06	5035/5030B	SW846 8260B		
4-Chlorotoluene	< 58	58	50	ug/Kg		08/24/06	5035/5030B	SW846 8260B		
4-Methyl-2-pentanone	< 290	290	50	ug/Kg		08/24/06	5035/5030B	SW846 8260B		
Acetone	< 290	290	50	ug/Kg		08/24/06	5035/5030B	SW846 8260B		
Allyl Chloride	< 58	58	50	ug/Kg		08/24/06	5035/5030B	SW846 8260B		
Benzene	< 58	58	50	ug/Kg		08/24/06	5035/5030B	SW846 8260B		
Bromobenzene	< 58	58	50	ug/Kg		08/24/06	5035/5030B	SW846 8260B		
Bromochloromethane	< 58	58	50	ug/Kg		08/24/06	5035/5030B	SW846 8260B		
Bromodichloromethane	< 58	58	50	ug/Kg		08/24/06	5035/5030B	SW846 8260B		
Bromoform	< 58	58	50	ug/Kg		08/24/06	5035/5030B	SW846 8260B		
Bromomethane	< 58	58	50	ug/Kg		08/24/06	5035/5030B	SW846 8260B		
Carbon Tetrachloride	< 58	58	50	ug/Kg		08/24/06	5035/5030B	SW846 8260B		
Chlorobenzene	< 58	58	50	ug/Kg		08/24/06	5035/5030B	SW846 8260B		
Chlorodibromomethane	< 58	58	50	ug/Kg		08/24/06	5035/5030B	SW846 8260B		
Chloroethane	< 58	58	50	ug/Kg		08/24/06	5035/5030B	SW846 8260B		
Chloroform	< 58	58	50	ug/Kg		08/24/06	5035/5030B	SW846 8260B		
Chloromethane	< 58	58	50	ug/Kg		08/24/06	5035/5030B	SW846 8260B		

All soil results are reported on a dry weight basis unless otherwise noted.

Pace Analytical
Services, Inc.

Analytical Report Number: 875354

1241 Bellevue Street
Green Bay, WI 54302
920-489-2436Client: TWIN PORTS TESTING
Project Name: PRUDENTIAL REALTORS
Project Number:
Field ID: B-2-3'Matrix Type: SOIL
Collection Date: 08/21/06
Report Date: 08/28/06
Lab Sample Number: 875354-002

VOLATILES - MDH LIST

Prep Date: 08/24/06

Analyte	Result	EQL	Dilution	Units	Code	Anl Date	Prep Method	Anl Method
cis-1,2-Dichloroethane	< 58	58	50	ug/Kg		08/24/06	5035/5030B	SW846 8260B
cis-1,3-Dichloropropene	< 58	58	50	ug/Kg		08/24/06	5035/5030B	SW846 8260B
Dibromomethane	< 58	58	50	ug/Kg		08/24/06	5035/5030B	SW846 8260B
Dichlorodifluoromethane	< 58	58	50	ug/Kg		08/24/06	5035/5030B	SW846 8260B
Dichlorofluoromethane	< 58	58	50	ug/Kg		08/24/06	5035/5030B	SW846 8260B
Diethyl Ether	< 58	58	50	ug/Kg		08/24/06	5035/5030B	SW846 8260B
Ethylbenzene	< 58	58	50	ug/Kg		08/24/06	5035/5030B	SW846 8260B
Fluorotrichloromethane	< 58	58	50	ug/Kg		08/24/06	5035/5030B	SW846 8260B
Hexachlorobutadiene	< 58	58	50	ug/Kg		08/24/06	5035/5030B	SW846 8260B
Isopropylbenzene	< 58	58	50	ug/Kg		08/24/06	5035/5030B	SW846 8260B
Methylene Chloride	< 58	58	50	ug/Kg		08/24/06	5035/5030B	SW846 8260B
Methyl-tert-butyl-ether	< 58	58	50	ug/Kg		08/24/06	5035/5030B	SW846 8260B
Naphthalene	< 58	58	50	ug/Kg		08/24/06	5035/5030B	SW846 8260B
n-Butylbenzene	< 58	58	50	ug/Kg		08/24/06	5035/5030B	SW846 8260B
n-Propylbenzene	< 58	58	50	ug/Kg		08/24/06	5035/5030B	SW846 8260B
p-Isopropyltoluene	< 58	58	50	ug/Kg		08/24/06	5035/5030B	SW846 8260B
s-Butylbenzene	< 58	58	50	ug/Kg		08/24/06	5035/5030B	SW846 8260B
Styrene	< 58	58	50	ug/Kg		08/24/06	5035/5030B	SW846 8260B
t-Butylbenzene	< 58	58	50	ug/Kg		08/24/06	5035/5030B	SW846 8260B
Tetrachloroethene	< 58	58	50	ug/Kg		08/24/06	5035/5030B	SW846 8260B
Tetrahydrofuran	< 290	290	50	ug/Kg		08/24/06	5035/5030B	SW846 8260B
Toluene	< 58	58	50	ug/Kg		08/24/06	5035/5030B	SW846 8260B
trans-1,2-Dichloroethane	< 58	58	50	ug/Kg		08/24/06	5035/5030B	SW846 8260B
trans-1,3-Dichloropropene	< 58	58	50	ug/Kg		08/24/06	5035/5030B	SW846 8260B
Trichloroethane	< 58	58	50	ug/Kg		08/24/06	5035/5030B	SW846 8260B
Vinyl Chloride	< 58	58	50	ug/Kg		08/24/06	5035/5030B	SW846 8260B
Xylene, o	< 58	58	50	ug/Kg		08/24/06	5035/5030B	SW846 8260B
Xylenes, m + p	< 120	120	50	ug/Kg		08/24/06	5035/5030B	SW846 8260B
Surrogate		LCL	UCL					
4-Bromodifluorobenzene	88	64	133	50 %		08/24/06	5035/5030B	SW846 8260B
Toluene-d8	98	67	139	50 %		08/24/06	5035/5030B	SW846 8260B
Dibromodifluoromethane	104	64	140	50 %		08/24/06	5035/5030B	SW846 8260B

All soil results are reported on a dry weight basis unless otherwise noted.

Pace Analytical
Services, Inc.

Analytical Report Number: 875354

1241 Bellevue Street
Green Bay, WI 54302
820-469-2436Client: TWIN PORTS TESTING
Project Name: PRUDENTIAL REALTORS
Project Number:
Field ID: 8-J-3'Matrix Type: SOIL
Collection Date: 08/21/06
Report Date: 08/28/08
Lab Sample Number: 875354-003

INORGANICS

Test	Result	EQL	Dilution	Units	Code	Anl Date	Prep Method	Anl Method
Percent Solids	89.0	—	1	%		08/24/06	SM M2540G	SM M2540G

DIESEL RANGE ORGANICS

Analyte	Result	EQL	Dilution	Units	Code	Anl Date	Prep Method	Anl Method
Diesel Range Organics	63	22	1	mg/kg	O	08/24/06	WI MOD DRO	WI MOD DRO

VOLATILES - MDH LIST

Analyte	Result	EQL	Dilution	Units	Code	Anl Date	Prep Method	Anl Method
1,1,1,2-Tetrachloroethane	< 58	58	50	ug/Kg		08/25/06	5035/5030B	SW846 8260B
1,1,1-Trichloroethane	< 58	58	50	ug/Kg		08/25/06	5035/5030B	SW846 8260B
1,1,2,2-Tetrachloroethane	< 58	58	50	ug/Kg		08/25/06	5035/5030B	SW846 8260B
1,1,2-Trichloroethane	< 58	58	50	ug/Kg		08/25/06	5035/5030B	SW846 8260B
1,1,2-Trichlorotrifluoroethane	< 68	68	50	ug/Kg		08/25/06	5035/5030B	SW846 8260B
1,1-Dichloroethane	< 58	58	50	ug/Kg		08/25/06	5035/5030B	SW846 8260B
1,1-Dichloroethene	< 58	58	50	ug/Kg		08/25/06	5035/5030B	SW846 8260B
1,1-Dichloropropane	< 58	58	50	ug/Kg		08/25/06	5035/5030B	SW846 8260B
1,2,3-Trichlorobenzene	< 58	58	50	ug/Kg		08/25/06	5035/5030B	SW846 8260B
1,2,3-Trichloropropane	< 58	58	50	ug/Kg		08/25/06	5035/5030B	SW846 8260B
1,2,4-Trichlorobenzene	< 58	58	50	ug/Kg		08/25/06	5035/5030B	SW846 8260B
1,2,4-Trimethylbenzene	< 58	58	50	ug/Kg		08/25/06	5035/5030B	SW846 8260B
1,2-Dibromo-3-chloropropane	< 110	110	50	ug/Kg		08/25/06	5035/5030B	SW846 8260B
1,2-Dibromoethane	< 58	58	50	ug/Kg		08/25/06	5035/5030B	SW846 8260B
1,2-Dichlorobenzene	< 58	58	50	ug/Kg		08/25/06	5035/5030B	SW846 8260B
1,2-Dichloroethane	< 58	58	50	ug/Kg		08/25/06	5035/5030B	SW846 8260B
1,2-Dichloropropane	< 58	58	50	ug/Kg		08/25/06	5035/5030B	SW846 8260B
1,3,5-Trimethylbenzene	< 58	58	50	ug/Kg		08/25/06	5035/5030B	SW846 8260B
1,3-Dichlorobenzene	< 58	58	50	ug/Kg		08/25/06	5035/5030B	SW846 8260B
1,3-Dichloropropane	< 58	58	50	ug/Kg		08/25/06	5035/5030B	SW846 8260B
1,4-Dichlorobenzene	< 58	58	50	ug/Kg		08/25/06	5035/5030B	SW846 8260B
2,2-Dichloropropane	< 58	58	50	ug/Kg		08/25/06	5035/5030B	SW846 8260B
2-Butanone	< 280	280	50	ug/Kg		08/25/06	5035/5030B	SW846 8260B
2-Chlorotoluene	< 58	58	50	ug/Kg		08/25/06	5035/5030B	SW846 8260B
4-Chlorotoluene	< 58	58	50	ug/Kg		08/25/06	5035/5030B	SW846 8260B
4-Methyl-2-pentanone	< 280	280	50	ug/Kg		08/25/06	5035/5030B	SW846 8260B
Acetone	< 280	280	50	ug/Kg		08/25/06	5035/5030B	SW846 8260B
Amyl Chloride	< 58	58	50	ug/Kg		08/25/06	5035/5030B	SW846 8260B
Benzene	< 58	58	50	ug/Kg		08/25/06	5035/5030B	SW846 8260B
Bromobenzene	< 58	58	50	ug/Kg		08/25/06	5035/5030B	SW846 8260B
Bromochloromethane	< 58	58	50	ug/Kg		08/25/06	5035/5030B	SW846 8260B
Bromodichloromethane	< 58	58	50	ug/Kg		08/25/06	5035/5030B	SW846 8260B
Bromoforn	< 58	58	50	ug/Kg		08/25/06	5035/5030B	SW846 8260B
Bromomethane	< 58	58	50	ug/Kg		08/25/06	5035/5030B	SW846 8260B
Carbon Tetrachloride	< 58	58	50	ug/Kg		08/25/06	5035/5030B	SW846 8260B
Chlorobenzene	< 58	58	50	ug/Kg		08/25/06	5035/5030B	SW846 8260B
Chlorobromomethane	< 58	58	50	ug/Kg		08/25/06	5035/5030B	SW846 8260B
Chloroethane	< 58	58	50	ug/Kg		08/25/06	5035/5030B	SW846 8260B
Chloroform	< 58	58	50	ug/Kg		08/25/06	5035/5030B	SW846 8260B
Chloromethane	< 58	58	50	ug/Kg		08/25/06	5035/5030B	SW846 8260B

All soil results are reported on a dry weight basis unless otherwise noted.

**Pace Analytical
Services, Inc.**

Analytical Report Number: 875354

1241 Bellevue Street
Green Bay, WI 54302
920-469-2438

Client : TWIN PORTS TESTING
Project Name : PRUDENTIAL REALTORS
Project Number :
Field ID : B-3-3'

Matrix Type : SOIL
Collection Date : 08/21/06
Report Date : 08/28/06
Lab Sample Number : 875354-003

VOLATILES - MDH LIST		Prep Date: 08/24/06					Code	Anl Date	Prep Method	Anl Method
Analyte	Result	EQL	Dilution	Units						
cis-1,2-Dichloroethane	< 58	58	50	ug/Kg			08/25/06	5035/5030B	SW846 8260B	
cis-1,3-Dichloropropene	< 58	58	50	ug/Kg			08/25/06	5035/5030B	SW846 8260B	
Dibromomethane	< 58	58	50	ug/Kg			08/25/06	5035/5030B	SW846 8260B	
Dichlorodifluoromethane	< 58	58	50	ug/Kg			08/25/06	5035/5030B	SW846 8260B	
Dichlorofluoromethane	< 58	58	50	ug/Kg			08/25/06	5035/5030B	SW846 8260B	
Diethyl Ether	< 58	58	50	ug/Kg			08/25/06	5035/5030B	SW846 8260B	
Ethylbenzene	< 58	58	50	ug/Kg			08/25/06	5035/5030B	SW846 8260B	
Fluorotrichloromethane	< 58	58	50	ug/Kg			08/25/06	5035/5030B	SW846 8260B	
Hexachlorobutadiene	< 58	58	50	ug/Kg			08/25/06	5035/5030B	SW846 8260B	
Isopropylbenzene	< 58	58	50	ug/Kg			08/25/06	5035/5030B	SW846 8260B	
Methylene Chloride	< 58	58	50	ug/Kg			08/25/06	5035/5030B	SW846 8260B	
Methyl-tert-butyl-ether	< 58	58	50	ug/Kg			08/25/06	5035/5030B	SW846 8260B	
Naphthalene	< 58	58	50	ug/Kg			08/25/06	5035/5030B	SW846 8260B	
n-Butylbenzene	< 58	58	50	ug/Kg			08/25/06	5035/5030B	SW846 8260B	
n-Propylbenzene	< 58	58	50	ug/Kg			08/25/06	5035/5030B	SW846 8260B	
p-Isopropyltoluene	< 58	58	50	ug/Kg			08/25/06	5035/5030B	SW846 8260B	
s-Butylbenzene	< 58	58	50	ug/Kg			08/25/06	5035/5030B	SW846 8260B	
Styrene	< 58	58	50	ug/Kg			08/25/06	5035/5030B	SW846 8260B	
t-Butylbenzene	< 58	58	50	ug/Kg			08/25/06	5035/5030B	SW846 8260B	
Tetrachloroethene	< 58	58	50	ug/Kg			08/25/06	5035/5030B	SW846 8260B	
Tetrahydrofuran	< 280	280	50	ug/Kg			08/25/06	5035/5030B	SW846 8260B	
Toluene	< 58	58	50	ug/Kg			08/25/06	5035/5030B	SW846 8260B	
trans-1,2-Dichloroethene	< 58	58	50	ug/Kg			08/25/06	5035/5030B	SW846 8260B	
trans-1,3-Dichloropropene	< 58	58	50	ug/Kg			08/25/06	5035/5030B	SW846 8260B	
Trichloroethene	< 58	58	50	ug/Kg			08/25/06	5035/5030B	SW846 8260B	
Vinyl Chloride	< 58	58	50	ug/Kg			08/25/06	5035/5030B	SW846 8260B	
Xylene, o	< 58	58	50	ug/Kg			08/25/06	5035/5030B	SW846 8260B	
Xylenes, m + p	< 110	110	50	ug/Kg			08/25/06	5035/5030B	SW846 8260B	
Surrogate		LCL	UCL							
4-Bromofluorobenzene	90	84	133	50	%		08/26/06	5035/5030B	SW846 8260B	
Toluene-d8	98	87	139	50	%		08/26/06	5035/5030B	SW846 8260B	
Dibromofluoromethane	113	84	140	50	%		08/25/06	5035/5030B	SW846 8260B	

All soil results are reported on a dry weight basis unless otherwise noted.

Pace Analytical Services, Inc.

Analytical Report Number: 875354

1241 Bellevue Street
Green Bay, WI 54302
920-469-2435

Client: TWIN PORTS TESTING
Project Name: PRUDENTIAL REALTORS
Project Number:
Field ID: TRIP BLANK

Matrix Type: METHANOL
Collection Date: 08/21/06
Report Date: 08/28/06
Lab Sample Number: 875354-004

VOLATILES - MDH LIST			Prep Date: 08/24/06		Code	Anl Date	Prep Method	Anl Method
Analyte	Result	EQL	Dilution	Units				
1,1,1,2-Tetrachloroethane	< 50	50	50	ug/L		08/24/06	SW846 5030B	SW846 8260B
1,1,1-Trichloroethane	< 50	50	50	ug/L		08/24/06	SW846 5030B	SW846 8260B
1,1,2,2-Tetrachloroethane	< 50	50	50	ug/L		08/24/06	SW846 5030B	SW846 8260B
1,1,2-Trichloroethane	< 50	50	50	ug/L		08/24/06	SW846 5030B	SW846 8260B
1,1,2-Trichlorotrifluoroethane	< 50	50	50	ug/L		08/24/06	SW846 5030B	SW846 8260B
1,1-Dichloroethane	< 50	50	50	ug/L		08/24/06	SW846 5030B	SW846 8260B
1,1-Dichloroethene	< 50	50	50	ug/L		08/24/06	SW846 5030B	SW846 8260B
1,1-Dichloropropene	< 50	50	50	ug/L		08/24/06	SW846 5030B	SW846 8260B
1,2,3-Trichlorobenzene	< 50	50	50	ug/L		08/24/06	SW846 5030B	SW846 8260B
1,2,3-Trichloropropene	< 50	50	50	ug/L		08/24/06	SW846 5030B	SW846 8260B
1,2,4-Trichlorobenzene	< 50	50	50	ug/L		08/24/06	SW846 5030B	SW846 8260B
1,2,4-Trimethylbenzene	< 50	50	50	ug/L		08/24/06	SW846 5030B	SW846 8260B
1,2-Dibromo-3-chloropropane	< 100	100	50	ug/L		08/24/06	SW846 5030B	SW846 8260B
1,2-Dibromoethane	< 50	50	50	ug/L		08/24/06	SW846 5030B	SW846 8260B
1,2-Dichlorobenzene	< 50	50	50	ug/L		08/24/06	SW846 5030B	SW846 8260B
1,2-Dichloroethane	< 50	50	50	ug/L		08/24/06	SW846 5030B	SW846 8260B
1,2-Dichloropropene	< 50	50	50	ug/L		08/24/06	SW846 5030B	SW846 8260B
1,3,5-Trimethylbenzene	< 50	50	50	ug/L		08/24/06	SW846 5030B	SW846 8260B
1,3-Dichlorobenzene	< 50	50	50	ug/L		08/24/06	SW846 5030B	SW846 8260B
1,3-Dichloropropane	< 50	50	50	ug/L		08/24/06	SW846 5030B	SW846 8260B
1,4-Dichlorobenzene	< 50	50	50	ug/L		08/24/06	SW846 5030B	SW846 8260B
2,2-Dichloropropane	< 50	50	50	ug/L		08/24/06	SW846 5030B	SW846 8260B
2-Butenone	< 250	250	50	ug/L		08/24/06	SW846 5030B	SW846 8260B
2-Chlorotoluene	< 50	50	50	ug/L		08/24/06	SW846 5030B	SW846 8260B
4-Chlorotoluene	< 50	50	50	ug/L		08/24/06	SW846 5030B	SW846 8260B
4-Methyl-2-pentanone	< 250	250	50	ug/L		08/24/06	SW846 5030B	SW846 8260B
Acetone	< 250	250	50	ug/L		08/24/06	SW846 5030B	SW846 8260B
Allyl Chloride	< 50	50	50	ug/L		08/24/06	SW846 5030B	SW846 8260B
Benzene	< 50	50	50	ug/L		08/24/06	SW846 5030B	SW846 8260B
Bromobenzene	< 50	50	50	ug/L		08/24/06	SW846 5030B	SW846 8260B
Bromochloromethane	< 50	50	50	ug/L		08/24/06	SW846 5030B	SW846 8260B
Bromodichloromethane	< 50	50	50	ug/L		08/24/06	SW846 5030B	SW846 8260B
Bromoforn	< 50	50	50	ug/L		08/24/06	SW846 5030B	SW846 8260B
Bromomethane	< 50	50	50	ug/L		08/24/06	SW846 5030B	SW846 8260B
Carbon Tetrachloride	< 50	50	50	ug/L		08/24/06	SW846 5030B	SW846 8260B
Chlorobenzene	< 50	50	50	ug/L		08/24/06	SW846 5030B	SW846 8260B
Chlorobromomethane	< 50	50	50	ug/L		08/24/06	SW846 5030B	SW846 8260B
Chloroethane	< 50	50	50	ug/L		08/24/06	SW846 5030B	SW846 8260B
Chloroform	< 50	50	50	ug/L		08/24/06	SW846 5030B	SW846 8260B
Chloromethane	< 50	50	50	ug/L		08/24/06	SW846 5030B	SW846 8260B
cis-1,2-Dichloroethane	< 50	50	50	ug/L		08/24/06	SW846 5030B	SW846 8260B
cis-1,3-Dichloropropene	< 50	50	50	ug/L		08/24/06	SW846 5030B	SW846 8260B
Dibromomethane	< 50	50	50	ug/L		08/24/06	SW846 5030B	SW846 8260B
Dichlorodifluoromethane	< 50	50	50	ug/L		08/24/06	SW846 5030B	SW846 8260B
Dichlorofluoromethane	< 50	50	50	ug/L		08/24/06	SW846 5030B	SW846 8260B
Diethyl Ester	< 50	50	50	ug/L		08/24/06	SW846 5030B	SW846 8260B
Ethylbenzene	< 50	50	50	ug/L		08/24/06	SW846 5030B	SW846 8260B
Fluorotrichloromethane	< 50	50	50	ug/L		08/24/06	SW846 5030B	SW846 8260B

Pace Analytical
Services, Inc.

Analytical Report Number: 875354

1241 Bellevue Street
Green Bay, WI 54302
920-469-2435Client: TWIN PORTS TESTING
Project Name: PRUDENTIAL REALTORS
Project Number:
Field ID: TRIP BLANKMatrix Type: METHANOL
Collection Date: 08/21/06
Report Date: 08/28/06
Lab Sample Number: 875354-004

VOLATILES - MDH LIST		Prep Date: 08/24/06				Code	Anl Date	Prep Method	Anl Method
Analyte	Result	EQL	Dilution	Units					
Hexachlorobutadiene	< 50	50	50	ug/L		08/24/06	SW846 5030B	SW846 8260B	
Isopropylbenzene	< 50	50	50	ug/L		08/24/06	SW846 5030B	SW846 8260B	
Methylene Chloride	< 50	50	50	ug/L		08/24/06	SW846 5030B	SW846 8260B	
Methyl-tert-butyl-ether	< 50	50	50	ug/L		08/24/06	SW846 5030B	SW846 8260B	
Naphthalene	< 50	50	50	ug/L		08/24/06	SW846 5030B	SW846 8260B	
n-Butylbenzene	< 50	50	50	ug/L		08/24/06	SW846 5030B	SW846 8260B	
n-Propylbenzene	< 50	50	50	ug/L		08/24/06	SW846 5030B	SW846 8260B	
p-Isopropyltoluene	< 50	50	50	ug/L		08/24/06	SW846 5030B	SW846 8260B	
s-Butylbenzene	< 50	50	50	ug/L		08/24/06	SW846 5030B	SW846 8260B	
Styrene	< 50	50	50	ug/L		08/24/06	SW846 5030B	SW846 8260B	
t-Butylbenzene	< 50	50	50	ug/L		08/24/06	SW846 5030B	SW846 8260B	
Tetrachloroethene	< 50	50	50	ug/L		08/24/06	SW846 5030B	SW846 8260B	
Tetrahydrofuran	< 250	250	50	ug/L		08/24/06	SW846 5030B	SW846 8260B	
Toluene	< 50	50	50	ug/L		08/24/06	SW846 5030B	SW846 8260B	
trans-1,2-Dichloroethene	< 50	50	50	ug/L		08/24/06	SW846 5030B	SW846 8260B	
trans-1,3-Dichloropropene	< 50	50	50	ug/L		08/24/06	SW846 5030B	SW846 8260B	
Trichloroethene	< 50	50	50	ug/L		08/24/06	SW846 5030B	SW846 8260B	
Vinyl Chloride	< 50	50	50	ug/L		08/24/06	SW846 5030B	SW846 8260B	
Xylene, o	< 50	50	50	ug/L		08/24/06	SW846 5030B	SW846 8260B	
Xylenes, m + p	< 100	100	50	ug/L		08/24/06	SW846 5030B	SW846 8260B	
Surrogate		LCL	UCL						
4-Bromofluorobenzene	85	64	133	50 %		08/24/06	SW846 5030B	SW846 8260B	
Toluene-d8	88	67	139	50 %		08/24/06	SW846 5030B	SW846 8260B	
Dibromofluoromethane	103	64	140	50 %		08/24/06	SW846 5030B	SW846 8260B	

**Pace Analytical
Services, Inc.**1241 Bellevue Street
Green Bay, WI 54302
820-469-2438
Fax: 820-469-8827

Lab Number	TestGroupID	Field ID	Comment
875354-001	DRO-S	B-1-3'	Results for analysis taken from a sub sampled portion. This does not conform to required sampling techniques.
875354-002	DRO-S	B-2-3'	Results for analysis taken from a sub sampled portion. This does not conform to required sampling techniques.
875354-002	DRO-S	B-2-3'	Late eluting hump along with diesel range peaks were present in the chromatogram.
875354-003	485-S-ME	B-3-3'	Sample received overweight (20.0 grams).
875354-003	DRO-S	B-3-3'	Results for analysis taken from a sub sampled portion. This does not conform to required sampling techniques.
875354-003	DRO-S	B-3-3'	Late eluting hump along with diesel range peaks were present in the chromatogram.

Qualifier Codes

Flag	Applies To	Explanation
A	Inorganic	Analyte is detected in the method blank. Method blank criteria is evaluated to the laboratory method detection limit. Additionally, method blank acceptance may be based on project specific criteria or determined from analyte concentrations in the sample and are evaluated on a sample by sample basis.
B	Inorganic	The analyte has been detected between the method detection limit and the reporting limit.
B	Organic	Analyte is present in the method blank. Method blank criteria is evaluated to the laboratory method detection limit. Additionally, method blank acceptance may be based on project specific criteria or determined from analyte concentrations in the sample and are evaluated on a sample by sample basis.
C	All	Elevated detection limit.
D	All	Analyte value from diluted analysis or surrogate result not applicable due to sample dilution.
E	Inorganic	Estimated concentration due to matrix interferences. During the metals analysis the serial dilution failed to meet the established control limits of 0-10%. The sample concentration is greater than 50 times the IDL for analysis done on the ICP or 100 times the IDL for analysis done on the ICP-MS. The result was flagged with the E qualifier to indicate that a physical interference was observed.
E	Organic	Analyte concentration exceeds calibration range.
F	Inorganic	Due to potential interferences for this analysis by Inductively Coupled Plasma techniques (SW-846 Method 6010), this analyte has been confirmed by and reported from an alternate method.
F	Organic	Surrogate results outside control criteria.
G	All	The result is estimated because the concentration is less than the lowest calibration standard concentration utilized in the initial calibration. The method detection limit is less than the reporting limit specified for this project.
H	All	Preservation, extraction or analysis performed past holding time.
HF	Inorganic	This test is considered a field parameter, and the recommended holding time is 15 minutes from collection. The analysis was performed in the laboratory beyond the recommended holding time.
J	All	Concentration detected equal to or greater than the method detection limit but less than the reporting limit.
K	Inorganic	Sample received unpreserved. Sample was either preserved at the time of receipt or at the time of sample preparation.
K	Organic	Detection limit may be elevated due to the presence of an unrequested analyte.
L	All	Elevated detection limit due to low sample volume.
M	Organic	Sample pH was greater than 2
N	All	Spiked sample recovery not within control limits.
O	Organic	Sample received overweight.
P	Organic	The relative percent difference between the two columns for detected concentrations was greater than 40%.
Q	All	The analyte has been detected between the limit of detection (LOD) and limit of quantitation (LOQ). The results are qualified due to the uncertainty of analyte concentrations within this range.
S	Organic	The relative percent difference between quantitation and confirmation columns exceeds internal quality control criteria. Because the result is unconfirmed, it has been reported as a non-detect with an elevated detection limit.
U	All	The analyte was not detected at or above the reporting limit.
V	All	Sample received with headspace.
W	All	A second aliquot of sample was analyzed from a container with headspace.
X	All	See Sample Narrative.
Z	Organics	This compound was separated in the check standard but it did not meet the resolution criteria as set forth in SW846.
8	All	Laboratory Control Spike recovery not within control limits.
-	All	Precision not within control limits.
+	Inorganic	The sample result is greater than four times the spike level; therefore, the percent recovery is not evaluated.
<	All	The analyte was not detected at or above the reporting limit.
1	Inorganic	Dissolved analyte or filtered analyte greater than total analyte; analyses passed QC based on precision criteria.
2	Inorganic	Dissolved analyte or filtered analyte greater than total analyte; analyses failed QC based on precision criteria.
3	Inorganic	BOD result is estimated due to the BOD blank exceeding the allowable oxygen depletion.
4	Inorganic	BOD duplicate precision not within control limits. Due to the 48 hour holding time for this test, it is not practical to reanalyze and try to correct the deficiency.
5	Inorganic	BOD result is estimated due to insufficient oxygen depletion. Due to the 48 hour holding time for this test, it is not practical to reanalyze and try to correct the deficiency.
6	Inorganic	BOD laboratory control sample not within control limits. Due to the 48 hour holding time for this test, it is not practical to reanalyze and try to correct the deficiency.
7	Inorganic	BOD result is estimated due to complete oxygen depletion. Due to the 48 hour holding time for this test, it is not practical to reanalyze and try to correct the deficiency.

**Pace Analytical
Services, Inc.**

Analysis Summary by Laboratory

1241 Bellevue Street
Green Bay, WI 54302

Test Group Name	875354-001	875354-002	875354-003	875354-004
DIESEL RANGE ORGANICS	B	B	B	
PERCENT SOLIDS	B	B	B	
VOLATILES - MDH LIST	G	G	G	G

Code	Facility	Address	MN Certification
B	Green Bay Lab (Bellevue St)	1241 Bellevue Street, Suite 9 Green Bay, WI 54302	055-999-334
G	Green Bay Lab (Industrial Dr)	1795 Industrial Drive Green Bay, WI 54302	055-999-334

1241 Bellevue Street
Green Bay, WI 54302
920-469-2436
Fax: 920-469-8827

Pace Analytical Services, Inc.

QC Summary

Batch: 875354
Lab Section: VOA
QC Batch Number: 13789
Prep Method: SW846 5030B
Analytical Method: SW846 8260B

QC Type Client Sample ID Lab Sample ID
MB vcg1935-95MB vcg1935-95MB
LCS vcg1935-95LCS vcg1935-95LCS
LCSD vcg1935-95LCSD vcg1935-95LCSD
MS 875337-002MS 875337-002MS
MSD 875337-002MSD 875337-002MSD

Client Sample ID	Lab Sample ID	MB ID	Client Sample ID	Lab Sample ID	MB ID
B-1-S	875354-C01	MB	B-2-3	875354-002	MB
B-3-S	875354-C03	MB	TRIP BLANK	875354-004	MB

Test Name	Method Blank Result Conc	LCS Spiked Conc	LCS Recovery			LCSD Spiked Conc	LCSD Recovery			LCS/LCSD RPD % C	LCS/LCSD Control Limits			Parent Sample Number	Parent Result Conc	MS Spiked Conc	MS Recovery			MSD Spiked Conc	MSD Recovery			MS/MSD RPD % C	MS/MSD Control Limits									
			Conc	%	C		Conc	%	C		LCL	UCL	RPD				Conc	%	C		Conc	%	C		LCL	UCL	RPD							
1,1,1,2-Tetrachloroethane	<	16	0	-	-	-	-	-	-	-	-	-	-	-	-	-	-	-	-	-	-	-	-	-	-	-	-	-	-	-	-	-	-	-
1,1,2-Trichloroethane	<	18	0	-	-	-	-	-	-	-	-	-	-	-	-	-	-	-	-	-	-	-	-	-	-	-	-	-	-	-	-	-	-	-
1,1-Dichloroethane	<	19	0	-	-	-	-	-	-	-	-	-	-	-	-	-	-	-	-	-	-	-	-	-	-	-	-	-	-	-	-	-	-	-
1,2,3-Trichlorobenzene	<	17	0	-	-	-	-	-	-	-	-	-	-	-	-	-	-	-	-	-	-	-	-	-	-	-	-	-	-	-	-	-	-	-
1,2,3-Trichloroethane	<	21	0	-	-	-	-	-	-	-	-	-	-	-	-	-	-	-	-	-	-	-	-	-	-	-	-	-	-	-	-	-	-	-
1,2,4-Trichlorobenzene	<	16	0	-	-	-	-	-	-	-	-	-	-	-	-	-	-	-	-	-	-	-	-	-	-	-	-	-	-	-	-	-	-	-
1,2,4-Trichloroethane	<	12	0	-	-	-	-	-	-	-	-	-	-	-	-	-	-	-	-	-	-	-	-	-	-	-	-	-	-	-	-	-	-	-
1,2-Dibromopropane	<	12	0	-	-	-	-	-	-	-	-	-	-	-	-	-	-	-	-	-	-	-	-	-	-	-	-	-	-	-	-	-	-	-
1,2-Dibromobenzene	<	18	0	-	-	-	-	-	-	-	-	-	-	-	-	-	-	-	-	-	-	-	-	-	-	-	-	-	-	-	-	-	-	-
1,2-Dichlorobenzene	<	12	0	-	-	-	-	-	-	-	-	-	-	-	-	-	-	-	-	-	-	-	-	-	-	-	-	-	-	-	-	-	-	-
1,3-Trimethylbenzene	<	12	0	-	-	-	-	-	-	-	-	-	-	-	-	-	-	-	-	-	-	-	-	-	-	-	-	-	-	-	-	-	-	-
1,3-Dichlorobenzene	<	14	0	-	-	-	-	-	-	-	-	-	-	-	-	-	-	-	-	-	-	-	-	-	-	-	-	-	-	-	-	-	-	-
1,3-Dichloropropane	<	12	0	-	-	-	-	-	-	-	-	-	-	-	-	-	-	-	-	-	-	-	-	-	-	-	-	-	-	-	-	-	-	-
1,4-Dichlorobenzene	<	16	0	-	-	-	-	-	-	-	-	-	-	-	-	-	-	-	-	-	-	-	-	-	-	-	-	-	-	-	-	-	-	-
2,2-Dibromopropane	<	16	0	-	-	-	-	-	-	-	-	-	-	-	-	-	-	-	-	-	-	-	-	-	-	-	-	-	-	-	-	-	-	-
2-Chlorobenzene	<	16	0	-	-	-	-	-	-	-	-	-	-	-	-	-	-	-	-	-	-	-	-	-	-	-	-	-	-	-	-	-	-	-
4-Chlorobenzene	<	28	0	-	-	-	-	-	-	-	-	-	-	-	-	-	-	-	-	-	-	-	-	-	-	-	-	-	-	-	-	-	-	-
Amyl Chloride	<	20	0	-	-	-	-	-	-	-	-	-	-	-	-	-	-	-	-	-	-	-	-	-	-	-	-	-	-	-	-	-	-	-
Phenylbenzene	<	14	0	-	-	-	-	-	-	-	-	-	-	-	-	-	-	-	-	-	-	-	-	-	-	-	-	-	-	-	-	-	-	-
Phenyltoluene	<	16	0	-	-	-	-	-	-	-	-	-	-	-	-	-	-	-	-	-	-	-	-	-	-	-	-	-	-	-	-	-	-	-
Dibromomethane	<	18	0	-	-	-	-	-	-	-	-	-	-	-	-	-	-	-	-	-	-	-	-	-	-	-	-	-	-	-	-	-	-	-

Conc = ug/Kg unless otherwise noted
 C = QC Code, see Qualifier Sheet
 Parent Result is reported down to MDL in order to allow Validation of this worksheet
 The %R and RPD results are calculated from raw data values with more significant figures than are reported on this form.

Report Date: 8/28/2008
 QC Batch Number: 13789

1241 Bellevue Street
 Green Bay, WI 54302
 920-468-2436
 Fax: 920-469-8827

Parent Result Conc	MS Spiked Conc	MS Recovery			MSD Spiked Conc	MSD Recovery			MS/MSD RPD %	MS/MSD Control Limits		
		Conc	%	C		Conc	%	C		LCL %	UCL %	RPD %
-	-	-	-	-	-	-	-	-	-	-	-	-
-	-	-	-	-	-	-	-	-	-	-	-	-
-	-	-	-	-	-	-	-	-	-	-	-	-
-	-	-	-	-	-	-	-	-	-	-	-	-
-	-	-	-	-	-	-	-	-	-	-	-	-
-	-	-	-	-	-	-	-	-	-	-	-	-
-	-	-	-	-	-	-	-	-	-	-	-	-
-	-	-	-	-	-	-	-	-	-	-	-	-
-	-	-	-	-	-	-	-	-	-	-	-	-
-	-	-	-	-	-	-	-	-	-	-	-	-
-	-	-	-	-	-	-	-	-	-	-	-	-
-	-	-	-	-	-	-	-	-	-	-	-	-
-	-	-	-	-	-	-	-	-	-	-	-	-
-	-	-	-	-	-	-	-	-	-	-	-	-
-	-	-	-	-	-	-	-	-	-	-	-	-
-	-	-	-	-	-	-	-	-	-	-	-	-
-	-	-	-	-	-	-	-	-	-	-	-	-
0.0000	2800.5	3500.3	88		2670.5	2150.4	78	34.4		50	150	50
0.0000	2800.5	3679.3	122		2670.5	2432.5	88	16.0		50	150	50
0.0000	2800.5	2684.9	83		2670.5	2280.4	79	15.8		50	150	50
0.0000	2800.5	2808	97		2670.5	2462.3	85	13.6		50	150	50
0.0000	2800.5	3135.5	109		2670.5	2628.7	91	17.6		40	120	50
0.0000	2800.5	2513.6	87		2670.5	2378.5	73	18.0		50	150	50
0.0000	2800.5	2825.2	98		2670.5	2380.8	69	16.5		50	150	50
0.0000	2800.5	3144.3	109		2670.5	2746	96	13.5		50	150	50
0.0000	2800.5	3035.7	113		2670.5	2380.8	87	26.5		50	150	50
0.0000	2800.5	2890	101		2670.5	2255	78	25.7		40	120	50
< 13	2800.5	3362.2	118		2670.5	2991.8	104	12.6		50	150	50
0.0000	2800.5	2726.5	96		2670.5	2396.6	83	12.9		50	150	50
0.0000	2800.5	2481.8	87		2670.5	2011.2	70	21.4		50	150	50
0.0000	2800.5	2112	73		2670.5	1848.5	64	13.3		40	120	50
0.0000	2800.5	2805.5	90		2670.5	2383.8	80	12.3		50	150	50
0.0500	2800.5	2902.2	102		2670.5	2412.8	84	19.4		50	150	50
0.0000	2800.5	2738.9	95		2670.5	2323.1	81	16.4		50	150	50
0.0000	2800.5	2360.3	72		2670.5	1838.2	64	11.5		40	120	50

Report Date: 8/28/2008

QC Batch Number: 13789

his worksheet
 re significant figures than are reported on this form.

Pace Analytical Services, Inc.

QC Summary

1241 Bellevue Street
Green Bay, WI 54302
820-469-2436
Fax: 820-469-8827

Test Name	Method Blank Result Conc	LCS Spiked Conc	LCS Recovery			LCSO Spiked Conc	LCSO Recovery			LCS/LCSO RPD % C	LCS/LCSO Control Limits			Parent Sample Number	Parent Result Conc	MS Spiked Conc	MS Recovery			MSD Spiked Conc	MSD Recovery			MS/MSD RPD % C	MS/MSD Control Limits		
			Conc	%	C		Conc	%	C		LCL	UCL	RPD				Conc	%	C		Conc	%	C		LCL	UCL	RPD
											%	%	%								%	%	%		%	%	%
Chloroform	< 18	2500.0	3377.5	95	2500.0	2448.1	98	3.0	75	125	20	875337-002	0.0000	2880.5	2723.4	95	2880.5	2942.2	81	15.3	50	150	50				
Chloromethane	< 20	2500.0	2328.8	93	2500.0	2398.5	96	3.0	42	125	20	875337-002	0.0000	2880.5	2412.2	84	2880.5	2911.5	70	18.1	40	120	50				
cis-1,2-Dichloroethane	< 20	2500.0	2874.2	115	2680.0	2964.8	119	3.1	75	125	20	875337-002	0.0000	2880.5	3214.5	112	2880.5	2769.5	97	14.3	50	150	50				
cis-1,3-Dichloropropene	< 14	2500.0	2157	86	2680.0	2219.2	89	2.8	75	125	20	875337-002	0.0000	2880.5	2639.5	99	2880.5	2721.5	74	17.9	50	150	50				
Ethylbenzene	< 15	2500.0	2483.9	99	2500.0	2583	103	2.8	75	125	20	875337-002	< 12	2880.5	3240.2	112	2880.5	2719.5	94	17.5	50	150	50				
Hexylene Chloride	< 14	2500.0	2844	105	2500.0	2777.7	110	3.8	58	144	20	875337-002	0.0000	2880.5	2827.3	98	2880.5	2461.8	86	12.9	40	120	50				
Styrene	< 12	2500.0	2678.4	100	2500.0	2687.8	107	3.5	75	150	20	875337-002	0.0000	2880.5	2942.7	102	2880.5	2509	87	18.1	50	150	50				
Tetrahydrofuran	< 16	2500.0	2300.7	90	2500.0	2593.8	100	0.1	75	125	20	875337-002	0.0000	2880.5	2793.2	97	2880.5	2364.8	82	16.9	50	150	50				
Toluene	< 8.5	2500.0	2477.1	99	2500.0	2678.9	103	4.0	75	125	20	875337-002	< 8.8	2880.5	3367.5	117	2880.5	2773.5	96	19.1	50	150	50				
trans-1,2-Dichloroethane	< 14	2500.0	2738.2	110	2500.0	2684.8	107	2.8	75	125	20	875337-002	0.0000	2880.5	2991.2	103	2880.5	2572.7	89	14.5	50	150	50				
trans-1,3-Dichloropropene	< 15	2500.0	1833	77	2500.0	1989.2	79	1.7	75	125	20	875337-002	0.0000	2880.5	2136.3	74	2880.5	1991	67	10.0	50	150	50				
Trichloroethane	< 20	2500.0	2398.4	96	2500.0	2462.1	98	2.8	75	125	20	875337-002	0.0000	2880.5	2789.4	97	2880.5	2763.9	81	17.8	50	150	50				
Vinyl Chloride	< 14	2500.0	2480	99	2500.0	2582.5	102	3.3	49	128	20	875337-002	0.0000	2880.5	2552.6	89	2880.5	2167.5	72	21.0	40	120	50				
Xylenes, m-p	< 22	5000.0	5113.2	102	5000.0	5110.3	102	0.1	75	127	20	875337-002	< 17	5761.0	6718.3	117	5761.0	5591.2	97	18.0	50	150	50				
4-Bromobromobenzene	59%	—	—	90	—	—	56	—	64	138	—	875337-002	88%	—	—	104	—	—	88	—	64	133	—				
Toluene-d8	100%	—	—	98	—	—	104	—	67	158	—	875337-002	97%	—	—	111	—	—	96	—	67	139	—				
Diethylmethane	112%	—	—	112	—	—	116	—	64	140	—	875337-002	111%	—	—	129	—	—	108	—	64	140	—				

Conc = ug/Kg unless otherwise noted

C = QC Code, see Qualifier Sheet

Parent Result is reported down to MDL in order to allow Validation of this worksheet

The %R and RPD results are calculated from raw data values with more significant figures than are reported on this form.

Report Date: 8/28/2006

QC Batch Number: 13789

09-06-'06 08:18 FROM-twin paris testing T-266 P026/032 F-059 1-715-392-7163

Pace Analytical Services, Inc.

QC Summary

1241 Bellevue Street
Green Bay, WI 54302
920-469-2436
Fax 920-469-8827

Batch: 875354
Lab Section: DIESEL
QC Batch Number: 13811
Prep Method: WI MOD DRO
Analytical Method: WI MOD DRO

QC Type	Client Sample ID	Lab Sample ID
MB	SD1934-096MB	SD1934-096MB
LCS	SD1934-096MBLCS	SD1934-096MBLCS
LCSD	SD1934-096MBLCSD	SD1934-096MBLCSD

Client Sample ID	Lab Sample ID	MB ID	Client Sample ID	Lab Sample ID	MB ID
B-1-3'	875354-001	MB	B-2-3'	875354-002	MB
B-3-3'	875354-003	MB			

Test Name	Method Blank Result Conc	LCS Spiked Conc	LCS Recovery			LCSD Spiked Conc	LCSD Recovery			LCS/LCSD RPD % C	LCS/LCSD Control Limits			Parent Sample Number	Parent Result Conc	MS Spiked Conc	MS Recovery			MSD Spiked Conc	MSD Recovery			MS/MSD RPD % C	MS/MSD Control Limits								
			Conc	%	C		Conc	%	C		LCL	UCL	RPD				Conc	%	C		Conc	%	C		LCL	UCL	RPD						
Diesel Range Controls	<	5	EQD	44.8	90	C	90.0	46.9	92	C	23	70	120	20	-	-	-	-	-	-	-	-	-	-	-	-	-	-	-	-	-	-	-

Conc = mg/kg unless otherwise noted

C = QC Code, see Qualifier Sheet

Parent Result is reported down to MDL in order to allow Validation of this worksheet

The %R and RPD results are calculated from raw data values with more significant figures than are reported on this form.

Report Date: 8/28/2008

QC Batch Number: 13811

T-266 P027/032 F-059
1-715-392-7163
09-06-'06 08:18 FROM-twin ports testing

Date File: \\lgbt\data2\chen\dro3.i\082406.b\016R0401.d

Date: 24-AUG-2006 14:00

Client ID: 875384-001

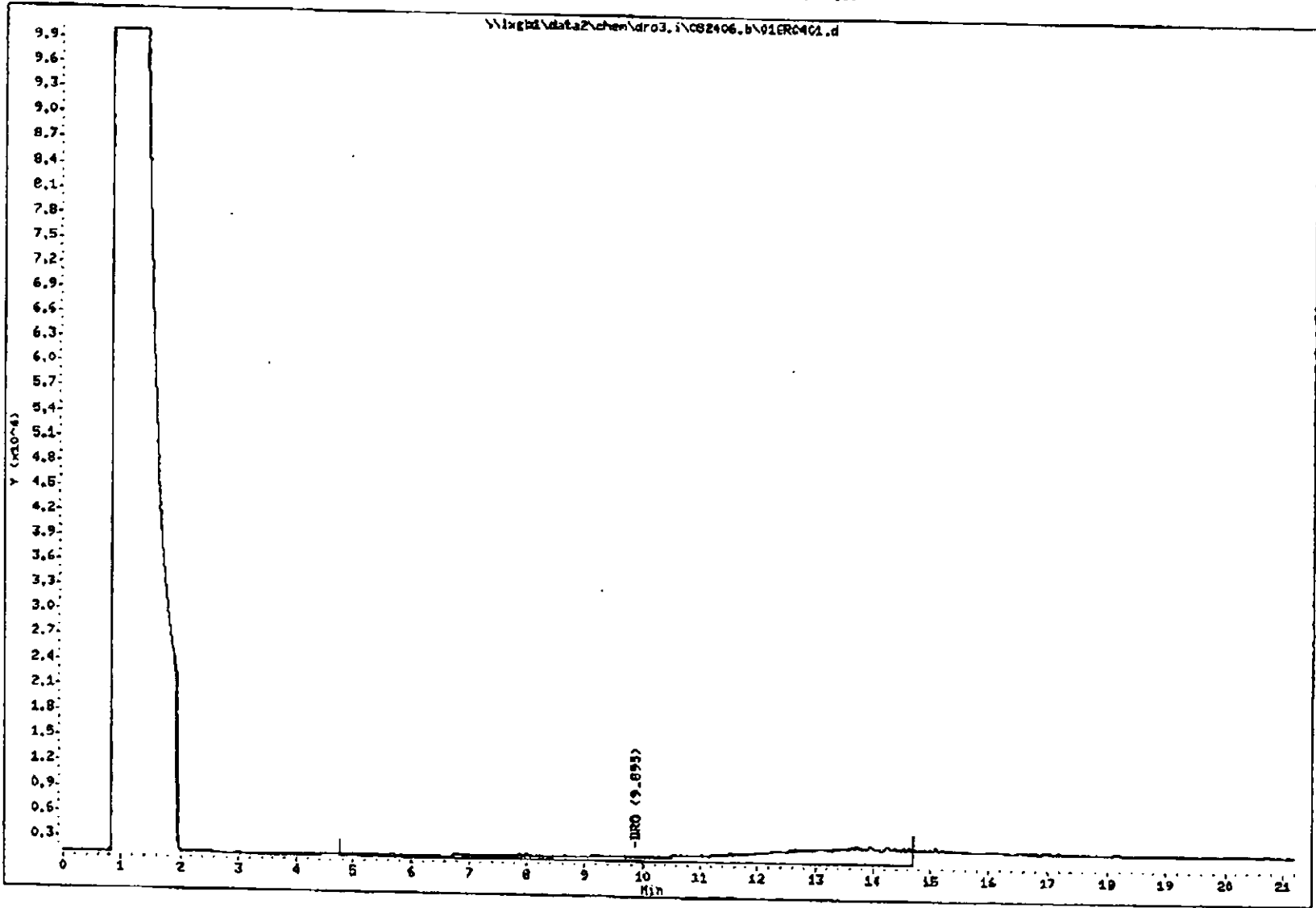
Sample Info: 875384-001SXI

Column phase: RTX-5/1.0.

Instrument: dro3.i

Operator: SVH

Column diameter: 0.53

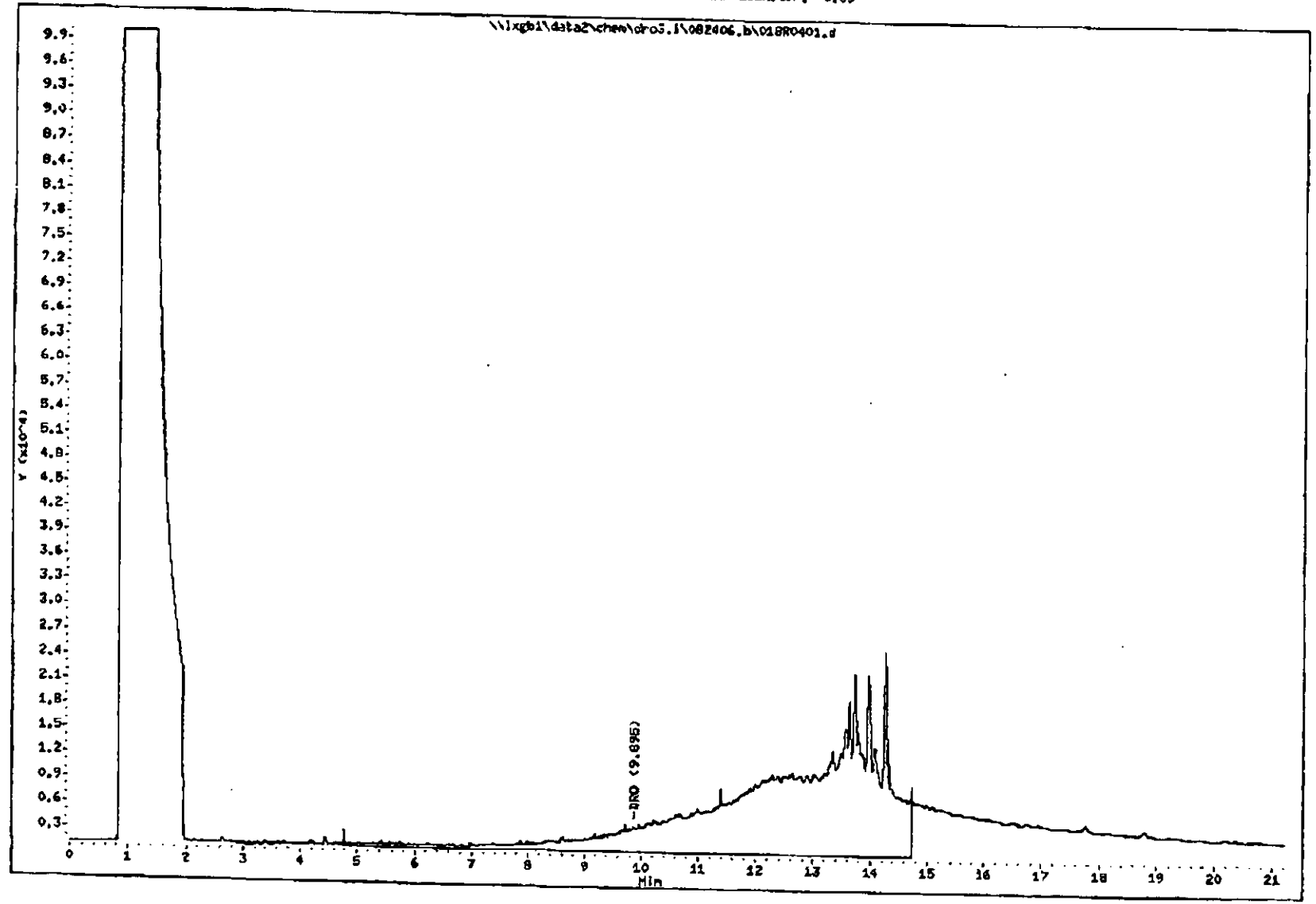


09-06-'06 08:19 FROM-twin poris testing 1-715-392-7163 T-266 P029/032 F-059

Data File: \\xgb1\data2\chem\droJ.1\082406.b\018R0401.d
Date : 24-ALC-2006 14:52
Client ID: 875354-002
Sample Info: 875354-0025X1

Instrument: dro3.i
Operator: SUH
Column diameter: 0.63

Column phase: RTX-E/I.C.



T-266 P030/032 F-059

1-715-392-7163

09-06-'06 08:19 FROM-twin ports testing

Data File: \\lxgh1\data2\chem\dro3.1\082406.b\020R0401.d

Date : 24-AUG-2006 15:45

Client ID: 875354-003

Sample Info: 875354-003SM

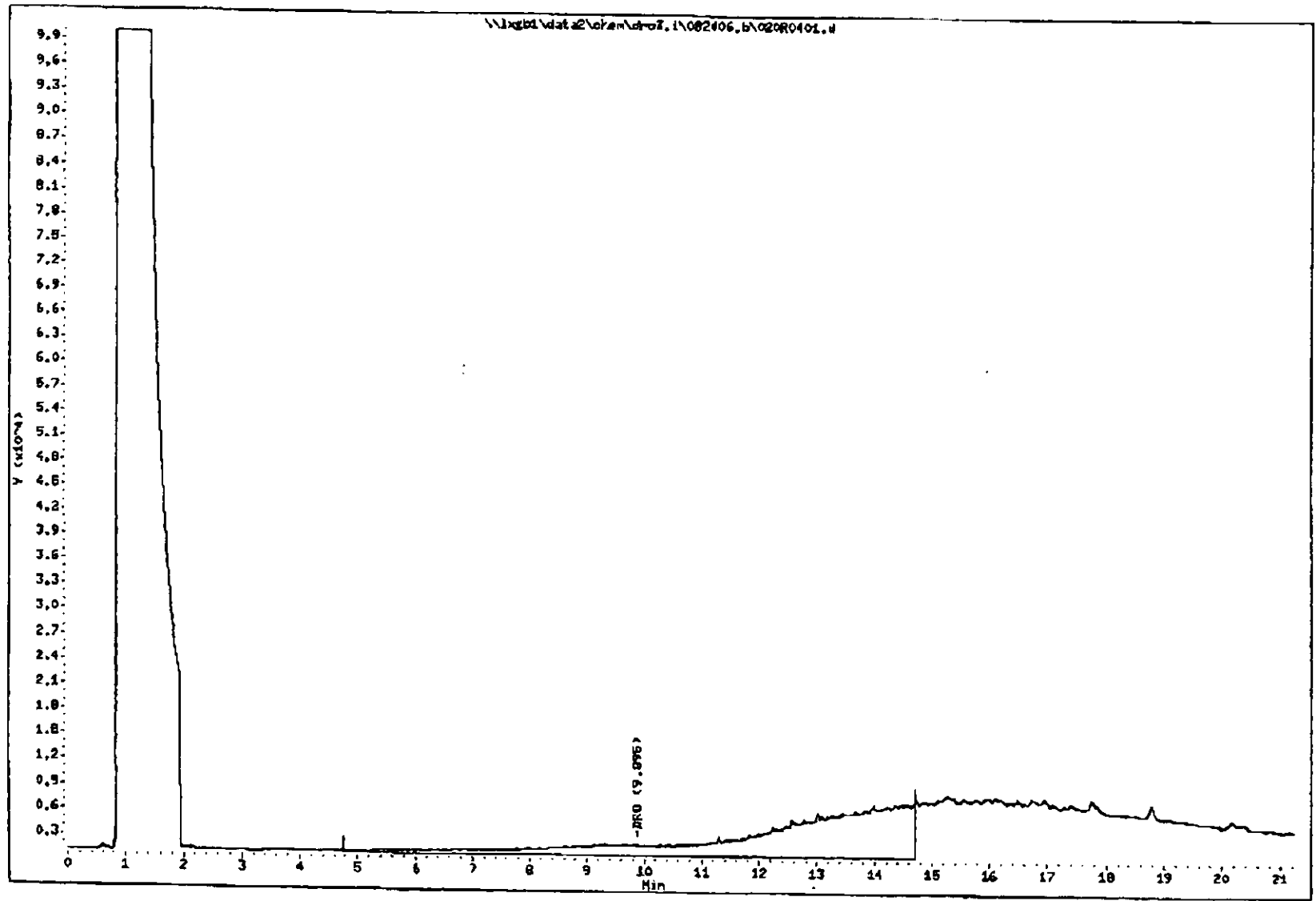
Column phase: RTX-B/I.C.

Instrument: dro3.1

Operator: SVH

Column diameter: 0.53

Page 2



\\lxgh1\data2\chem\dro3.1\082406.b\020R0401.d

Sample Condition Upon Receipt



Client Name: Twin Ports Testing Project # 875354

Courier: Fed Ex UPS USPS Client Commercial Pace Other _____

Custody Seal on Cooler/Box Present: yes no Seals Intact: yes no

Packing Material: Bubble Wrap Bubble Bags None Other _____

Thermometer Used JB

Type of Ice: Blue None

Samples on ice, cooling process has begun

Cooler Temperature 3.0°C

Biological Tissue is Frozen: Yes No

Date and initials of person examining contents: 8/23/06 - J
CO 8-23-06

Temp should be above freezing to 6°C

Comments:

Chain of Custody Present:	<input checked="" type="checkbox"/> Yes <input type="checkbox"/> No <input type="checkbox"/> N/A	1.
Chain of Custody Filled Out:	<input checked="" type="checkbox"/> Yes <input type="checkbox"/> No <input type="checkbox"/> N/A	2.
Chain of Custody Relinquished:	<input checked="" type="checkbox"/> Yes <input type="checkbox"/> No <input type="checkbox"/> N/A	3.
Sampler Name & Signature on COC:	<input type="checkbox"/> Yes <input checked="" type="checkbox"/> No <input type="checkbox"/> N/A	4.
Samples Arrived within Hold Time:	<input checked="" type="checkbox"/> Yes <input type="checkbox"/> No <input type="checkbox"/> N/A	5.
Short Hold Time Analysis (<72hr):	<input type="checkbox"/> Yes <input checked="" type="checkbox"/> No <input type="checkbox"/> N/A	6.
Rush Turn Around Time Requested:	<input checked="" type="checkbox"/> Yes <input type="checkbox"/> No <input type="checkbox"/> N/A	7. <u>Due 8/23/06</u>
Sufficient Volume:	<input checked="" type="checkbox"/> Yes <input type="checkbox"/> No <input type="checkbox"/> N/A	8.
Correct Containers Used:	<input checked="" type="checkbox"/> Yes <input type="checkbox"/> No <input type="checkbox"/> N/A	9. <u>the DRD samples are all overweight. will have to subbed in lab. -ds 8/23/06</u>
-Pace Containers Used:	<input checked="" type="checkbox"/> Yes <input type="checkbox"/> No <input type="checkbox"/> N/A	
Containers Intact:	<input checked="" type="checkbox"/> Yes <input type="checkbox"/> No <input type="checkbox"/> N/A	10.
Filtered volume received for Dissolved tests	<input type="checkbox"/> Yes <input type="checkbox"/> No <input checked="" type="checkbox"/> N/A	11.
Sample Labels match COC:	<input checked="" type="checkbox"/> Yes <input type="checkbox"/> No <input type="checkbox"/> N/A	12.
-Includes date/time/ID/Analysis Matrix: <u>S</u>		
All containers needing preservation have been checked.	<input type="checkbox"/> Yes <input type="checkbox"/> No <input checked="" type="checkbox"/> N/A	13.
All containers needing preservation are found to be in compliance with EPA recommendation.	<input type="checkbox"/> Yes <input type="checkbox"/> No <input checked="" type="checkbox"/> N/A	
exceptions: VOA, coliform, TOC, OSG, WI-DRD (water)	<input type="checkbox"/> Yes <input type="checkbox"/> No	initial when completed
Samples checked for dechlorination:	<input type="checkbox"/> Yes <input type="checkbox"/> No <input checked="" type="checkbox"/> N/A	14.
Headspace in VOA Vials (>8mm):	<input type="checkbox"/> Yes <input type="checkbox"/> No <input checked="" type="checkbox"/> N/A	15.
Trip Blank Present:	<input type="checkbox"/> Yes <input type="checkbox"/> No <input checked="" type="checkbox"/> N/A	16. <u>1-40ml meth Blank received. -ds 8/23/06</u>
Trip Blank Custody Seals Present	<input type="checkbox"/> Yes <input type="checkbox"/> No <input checked="" type="checkbox"/> N/A	
Pace Trip Blank Lot # (if purchased):		

Client Notification/ Resolution:

Field Data Required? Y / N

Person Contacted: _____ Date/Time: _____

Comments/ Resolution: _____

Project Manager Review: _____

CB 8/23/06

Date: _____

Note: Whenever there is a discrepancy affecting North Carolina compliance samples, a copy of this form will be sent to the North Carolina DEHNR Certification Office (i.e. out of hold, incorrect preservative, out of temp, incorrect containers)

ALLC003rev.2, 10June2005



Due: 8/28/06

CHAIN-OF-CUSTODY / Analytical Request Document

The Chain-of-Custody is a LEGAL DOCUMENT. All relevant fields must be completed accurately.

Page: 1 of 1
0964743

Section A

Required Client Information:

Company: TWIN PORTS TESTING

Address: 1301 N. 3RD ST.
SUPERIOR, WI 54880

Email To: Klete.Followfield@twportstesting.com

Phone: 715-392-7114 Fax: 715-392-7163

Requested Due Date/TAT: Standard

Section B

Required Project Information:

Report To: Klete Followfield

Copy To: Klete Followfield

Purchase Order No.:

Project Name: Prudential Realtors

Project Number:

Section C

Invoice Information:

Attention:

Company Name: Twin Ports Testing

Address:

Price Quote Reference:

Phase Project Manager:

Pace Profile #:

REGULATORY AGENCY

NPDES GROUND WATER DRINKING WATER

UST RCRA Other

SITE LOCATION: GA IL IN MI MN NC

OH SC VA OTHER

Section D

Required Client Information

SAMPLE ID

One Character per box.
(A-Z, 0-9, -)

Sample IDs MUST BE UNIQUE

Valid Matrix Codes

MATRIX	CODE
GROUND WATER	LAW
WATER	WT
PASTE WATER	WV
PRECIPIT	P
SOIL/SOLID	S
OIL	O
WASTE	W
AIR	A
OTHER	OT
TISSUE	TS

COLLECTED

DATE	TIME	DATE	TIME	SAMPLE TEMP AT COLLECTION	# OF CONTAINERS	PRESERVATIVES						
						Hydro	HNO3	HCl	H2SO4	Ascorbic	Malonic	Other

Requested Analysis:

Filtered (Y/N)

Requested Analysis:

875354

Page Project Number

Lab ID

ITEM #	SAMPLE ID	MATRIX CODE	DATE	TIME	DATE	TIME	SAMPLE TEMP AT COLLECTION	# OF CONTAINERS	PRESERVATIVES							Filtered (Y/N)	Requested Analysis	Page Project Number	Lab ID
									Hydro	HNO3	HCl	H2SO4	Ascorbic	Malonic	Other				
1	B-2-3'	SL G	8/21/06	14:45	8/21/06	14:45	3	2									001		
2	B-2-3'	SL G	8/21/06	15:15	8/21/06	15:15	3	2									002		
3	B-3-3'	SL G	8/21/06	15:42	8/21/06	15:42	3	2									003		
4	trip blank		8/21/06		8/21/06		1	1									004		
5																			
6																			
7																			
8																			
9																			
10																			
11																			
12																			

Additional Comments:

RELINQUISHED BY / AFFILIATION	DATE	TIME	ACCEPTED BY / AFFILIATION	DATE	TIME	SAMPLE CONDITION
<u>Klete Followfield</u>	8/21/06	8:35a	<u>B. Kapp</u>	8/21/06	8:35a	Y/N
<u>B. Kapp</u>	8/21/06	11:20a	<u>[Signature]</u>	8/21/06	11:20a	Y/N
<u>[Signature]</u>	8/21/06	11:40a	<u>[Signature]</u>	8/21/06	11:40a	Y/N
<u>Dinham</u>	8/21/06	08:20a	<u>Lori Stevens</u>	8/21/06	08:20a	3.0

SAMPLER NAME AND SIGNATURE

PRINT Name of SAMPLER:

SIGNATURE of SAMPLER:

DATE Signed 09/1/06/YY

Temp in °C

Received in Ice

Ceasidy Sealed Cooler

Samples Intact

SEE REVERSE SIDE FOR INSTRUCTIONS

ORIGINAL