

- Environmental Survey Corridor
- Access Road Survey Corridor
- Field Survey Not Complete
- Field Survey Not Required
- National Hydrography Dataset**
- Waterbody
- Intermittent Stream
- Perennial Stream
- Canal/Ditch
- NWI Wetland**
- PEM
- PFO
- PSS
- PUB
- L1U
- R2U; R4S; R5U; R3U
- Field Delineated Features**
- 2013 Sample Point
- 2014 Sample Point
- 2015 Sample Point
- 2016 Sample Point
- 2017 Sample Point
- 2018 Sample Point
- 2013 Field Delineated Waterbody
- 2014 Field Delineated Waterbody
- 2015 Field Delineated Waterbody
- 2016 Field Delineated Waterbody
- 2017 Field Delineated Waterbody
- 2018 Field Delineated Waterbody
- 2013 Wetland**
- PEM
- PFO
- PSS
- PUB
- L1UB
- 2014 Wetland**
- PEM
- PFO
- PSS
- PUB
- 2015 Wetland**
- PEM
- PFO
- PSS
- PUB
- 2016 Wetland**
- PEM
- PFO
- PSS
- PUB
- 2017 Wetland**
- PEM
- PFO
- PSS
- PUB
- 2018 Wetland**
- PEM
- PFO
- PSS
- PUB

Appendix F
Exhibit F 12-1

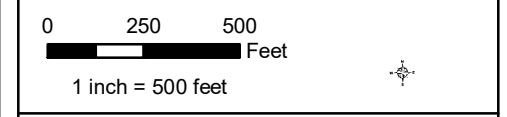
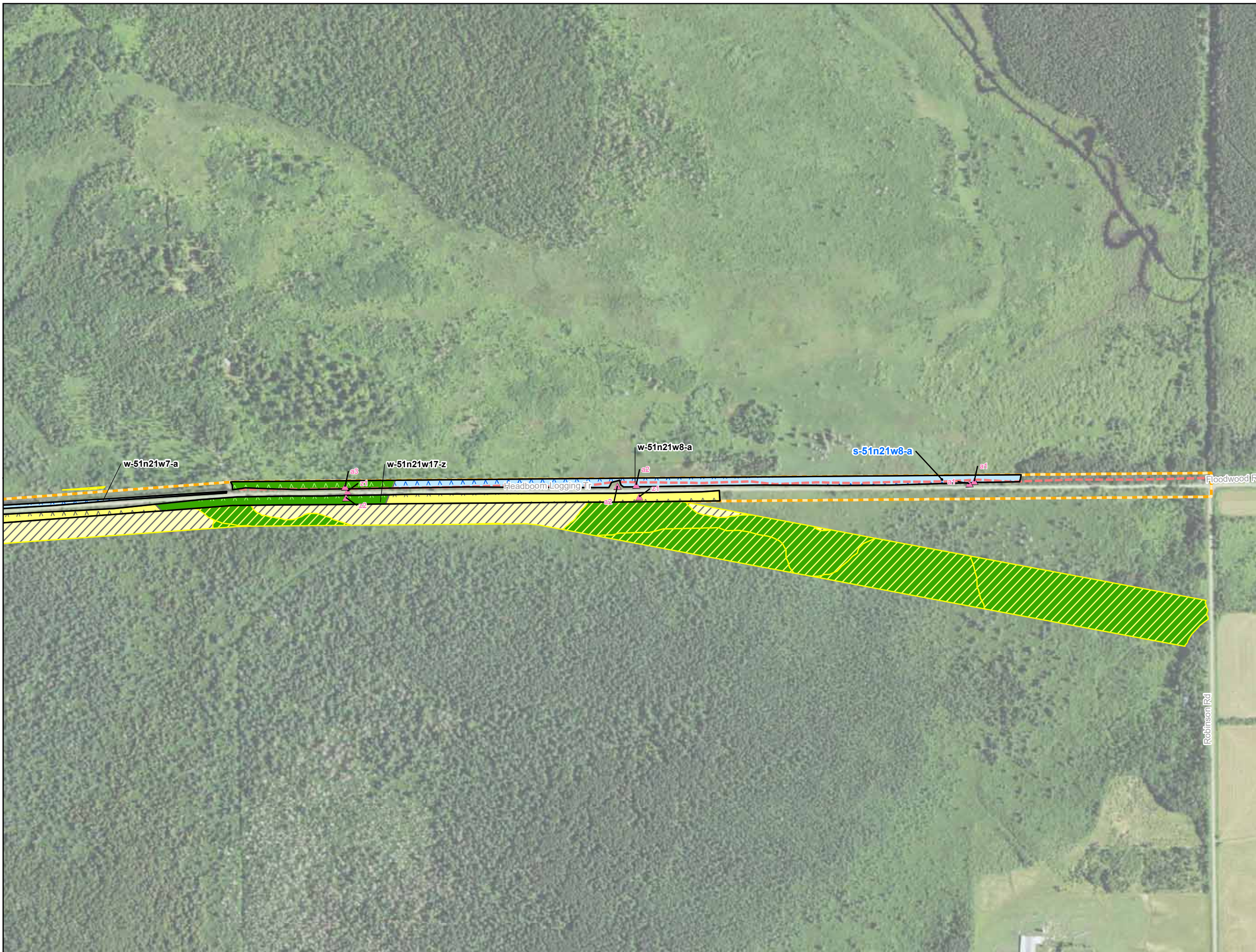
Enbridge

Field Collected Wetlands and Waterbodies

St. Louis County, Minnesota

For Environmental Review Purposes Only September 2018

Source: Z:\Clients\IE_F\Enbridge\Line_3_Pull_ReplacementField_Data\Wetland_Waterbody\Reports\Wetland_Waterbody_20180310\MT13R_Wetland_WB_AppendixF_MN.mxd



- Environmental Survey Corridor
- Access Road Survey Corridor
- Field Survey Not Complete
- Field Survey Not Required
- National Hydrography Dataset**
- Waterbody
- Intermittent Stream
- Perennial Stream
- Canal/Ditch
- NWI Wetland**
- PEM
- PFO
- PSS
- PUB
- L1U
- R2U; R4S; R5U; R3U
- Field Delineated Features**
- 2013 Sample Point
- 2014 Sample Point
- 2015 Sample Point
- 2016 Sample Point
- 2017 Sample Point
- 2018 Sample Point
- 2013 Field Delineated Waterbody
- 2014 Field Delineated Waterbody
- 2015 Field Delineated Waterbody
- 2016 Field Delineated Waterbody
- 2017 Field Delineated Waterbody
- 2018 Field Delineated Waterbody
- 2013 Wetland**
- PEM
- PFO
- PSS
- PUB
- L1UB
- 2014 Wetland**
- PEM
- PFO
- PSS
- PUB
- 2015 Wetland**
- PEM
- PFO
- PSS
- PUB
- 2016 Wetland**
- PEM
- PFO
- PSS
- PUB
- 2017 Wetland**
- PEM
- PFO
- PSS
- PUB
- 2018 Wetland**
- PEM
- PFO
- PSS
- PUB

Appendix F
Exhibit F 12-2

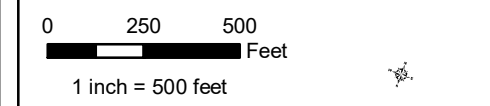
Enbridge

Field Collected Wetlands and Waterbodies

St. Louis County, Minnesota

For Environmental Review Purposes Only September 2018

Source: Z:\Clients\IE_F\Enbridge\Line_3_Pull_ReplacementField_Data\Wetland_Waterbody\Reports\Wetland_Waterbody_20180631\Wetland_Waterbody_WB_AppendixF_Min.mxd
Date: (9/20/2018)



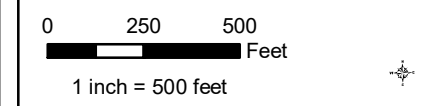
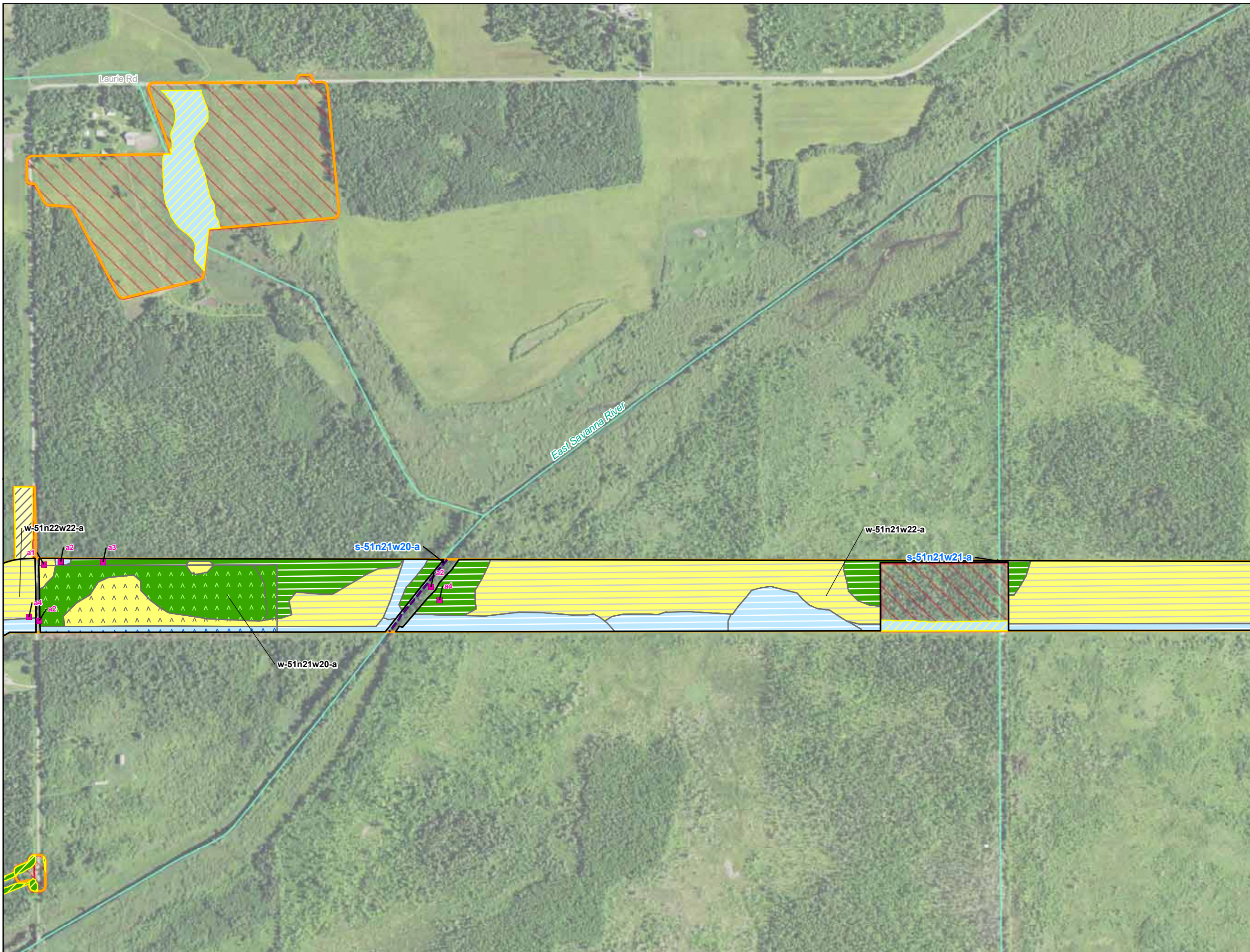
- Environmental Survey Corridor
- Access Road Survey Corridor
- Field Survey Not Complete
- Field Survey Not Required
- National Hydrography Dataset**
- Waterbody
- Intermittent Stream
- Perennial Stream
- Canal/Ditch
- NWI Wetland**
- PEM
- PSS
- L1U
- PFO
- PUB
- R2U; R4S; R5U; R3U
- Field Delineated Features**
- 2013 Sample Point
- 2014 Sample Point
- 2015 Sample Point
- 2016 Sample Point
- 2017 Sample Point
- 2018 Sample Point
- 2013 Field Delineated Waterbody
- 2014 Field Delineated Waterbody
- 2015 Field Delineated Waterbody
- 2016 Field Delineated Waterbody
- 2017 Field Delineated Waterbody
- 2018 Field Delineated Waterbody
- 2013 Wetland**
- PEM
- PFO
- PSS
- PUB
- L1UB
- 2014 Wetland**
- PEM
- PFO
- PSS
- PUB
- 2015 Wetland**
- PEM
- PFO
- PSS
- PUB
- 2016 Wetland**
- PEM
- PFO
- PSS
- PUB
- 2017 Wetland**
- PEM
- PFO
- PSS
- PUB
- 2018 Wetland**
- PEM
- PFO
- PSS
- PUB

**Appendix F
Exhibit F 12-3**

Enbridge
Field Collected Wetlands and Waterbodies
St. Louis County, Minnesota



Date: (9/20/2018) Source: Z:\Clients\IE_F\Enbridge\Line_3_Pull_ReplacementField_Data\Wetland_Waterbody\Reports\Wetland_Waterbody_20180631\Wetland_Waterbody_WB_AppendixF_Min.mxd



- Environmental Survey Corridor
- Access Road Survey Corridor
- Field Survey Not Complete
- Field Survey Not Required
- National Hydrography Dataset**
- Waterbody
- Intermittent Stream
- Perennial Stream
- Canal/Ditch
- NWI Wetland**
- PEM
- PSS
- L1U
- PFO
- PUB
- R2U; R4S; R5U; R3U
- Field Delineated Features**
- 2013 Sample Point
- 2014 Sample Point
- 2015 Sample Point
- 2016 Sample Point
- 2017 Sample Point
- 2018 Sample Point
- 2013 Field Delineated Waterbody
- 2014 Field Delineated Waterbody
- 2015 Field Delineated Waterbody
- 2016 Field Delineated Waterbody
- 2017 Field Delineated Waterbody
- 2018 Field Delineated Waterbody
- 2013 Wetland**
- PEM
- PFO
- PSS
- PUB
- L1UB
- 2014 Wetland**
- PEM
- PFO
- PSS
- PUB
- 2015 Wetland**
- PEM
- PFO
- PSS
- PUB
- 2016 Wetland**
- PEM
- PFO
- PSS
- PUB
- 2017 Wetland**
- PEM
- PFO
- PSS
- PUB
- 2018 Wetland**
- PEM
- PFO
- PSS
- PUB

**Appendix F
Exhibit F 12-4**

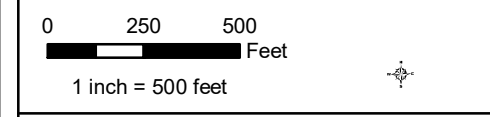
Enbridge

**Field Collected Wetlands and
Waterbodies**

St. Louis County, Minnesota



Source: Z:\Clients\IE_F\IE\bridge\Line_3_Pull_ReplacementField_Data\Wetland_Waterbody\Reports\Wetland_Waterbody_20180631\Wetland_Waterbody_20180631\Wetland_Waterbody_20180631\Wetland_Waterbody_20180631\Wetland_Waterbody_20180631.mxd



- Environmental Survey Corridor
- Access Road Survey Corridor
- Field Survey Not Complete
- Field Survey Not Required
- National Hydrography Dataset**
- Waterbody
- Intermittent Stream
- Perennial Stream
- Canal/Ditch
- NWI Wetland**
- PEM
- PSS
- L1U
- PFO
- PUB
- R2U; R4S; R5U; R3U
- Field Delineated Features**
- 2013 Sample Point
- 2014 Sample Point
- 2015 Sample Point
- 2016 Sample Point
- 2017 Sample Point
- 2018 Sample Point
- 2013 Field Delineated Waterbody
- 2014 Field Delineated Waterbody
- 2015 Field Delineated Waterbody
- 2016 Field Delineated Waterbody
- 2017 Field Delineated Waterbody
- 2018 Field Delineated Waterbody
- 2013 Wetland**
- PEM
- PFO
- PSS
- PUB
- L1UB
- 2014 Wetland**
- PEM
- PFO
- PSS
- PUB
- 2015 Wetland**
- PEM
- PFO
- PSS
- PUB
- 2016 Wetland**
- PEM
- PFO
- PSS
- PUB
- 2017 Wetland**
- PEM
- PFO
- PSS
- PUB
- 2018 Wetland**
- PEM
- PFO
- PSS
- PUB

Appendix F
Exhibit F 12-5

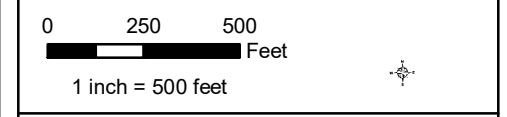
Enbridge

Field Collected Wetlands and Waterbodies

St. Louis County, Minnesota

For Environmental Review Purposes Only September 2018

Source: Z:\Clients\IE_F\Enbridge\Line_3_Pull_ReplacementField_Data\Wetland_Waterbody\Reports\Wetland_Waterbody_20180631\Wetland_Waterbody_WB_AppendixF_Wetland_WB.mxd



- Environmental Survey Corridor
- Access Road Survey Corridor
- Field Survey Not Complete
- Field Survey Not Required
- National Hydrography Dataset**
- Waterbody
- Intermittent Stream
- Perennial Stream
- Canal/Ditch
- NWI Wetland**
- PEM
- PSS
- L1U
- PFO
- PUB
- R2U; R4S; R5U; R3U
- Field Delineated Features**
- 2013 Sample Point
- 2014 Sample Point
- 2015 Sample Point
- 2016 Sample Point
- 2017 Sample Point
- 2018 Sample Point
- 2013 Field Delineated Waterbody
- 2014 Field Delineated Waterbody
- 2015 Field Delineated Waterbody
- 2016 Field Delineated Waterbody
- 2017 Field Delineated Waterbody
- 2018 Field Delineated Waterbody
- 2013 Wetland**
- PEM
- PFO
- PSS
- PUB
- L1UB
- 2014 Wetland**
- PEM
- PFO
- PSS
- PUB
- 2015 Wetland**
- PEM
- PFO
- PSS
- PUB
- 2016 Wetland**
- PEM
- PFO
- PSS
- PUB
- 2017 Wetland**
- PEM
- PFO
- PSS
- PUB
- 2018 Wetland**
- PEM
- PFO
- PSS
- PUB

Appendix F
Exhibit F 12-6

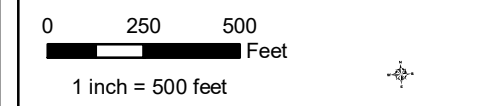
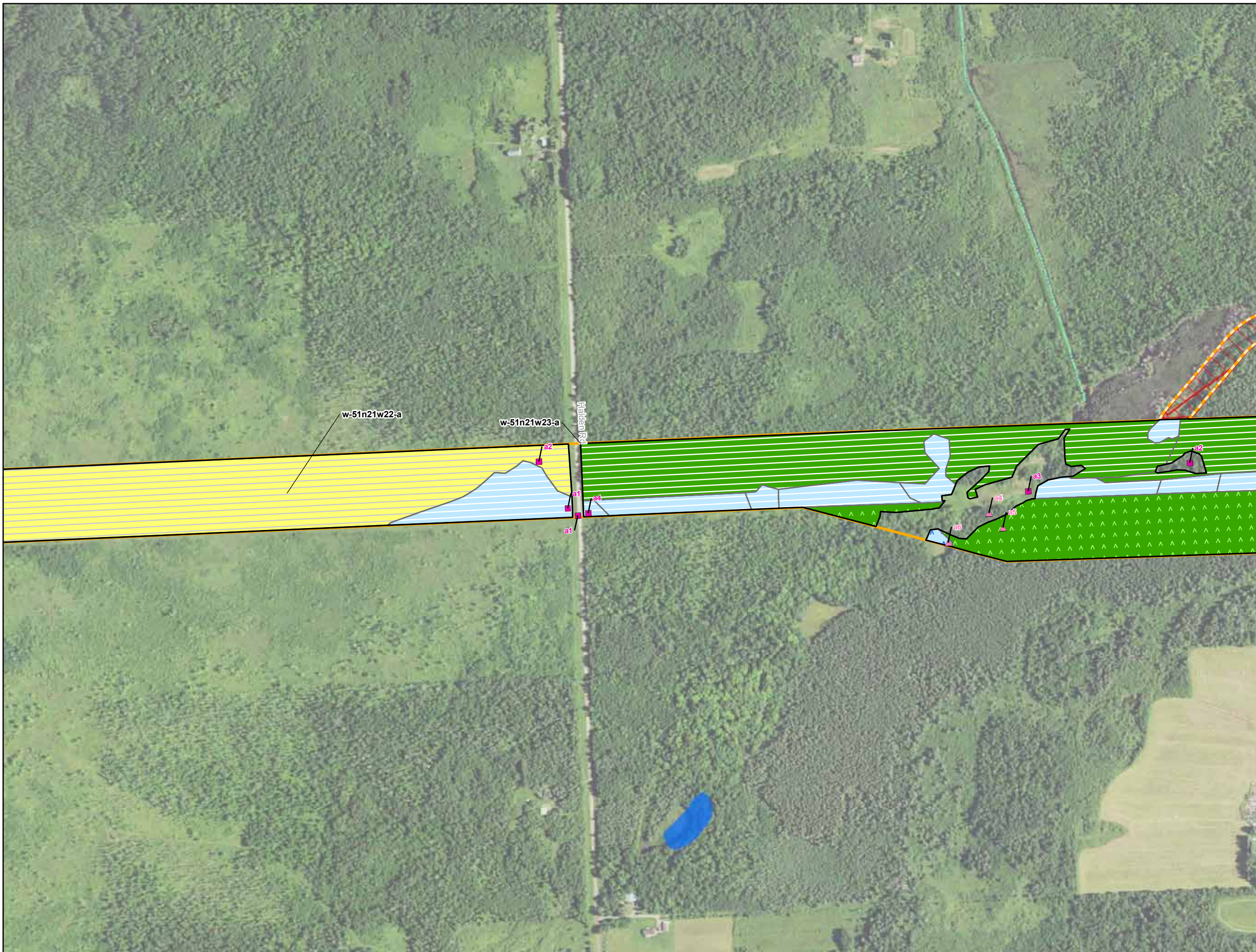
Enbridge

Field Collected Wetlands and Waterbodies

St. Louis County, Minnesota

For Environmental Review Purposes Only September 2018

Date: (9/20/2018) Source: Z:\Clients\IE_F\IE\bridge\Line_3_Pull_ReplacementField_Data\Wetland_Waterbody\Reports\Wetland_Waterbody_2018060310M\T13R_Wetland_WB_AppendixF_WB.mxd



- Environmental Survey Corridor
- Access Road Survey Corridor
- Field Survey Not Complete
- Field Survey Not Required
- National Hydrography Dataset**
- Waterbody
- Intermittent Stream
- Perennial Stream
- Canal/Ditch
- NWI Wetland**
- PEM
- PFO
- PSS
- PUB
- L1U
- R2U; R4S; R5U; R3U
- Field Delineated Features**
- 2013 Sample Point
- 2014 Sample Point
- 2015 Sample Point
- 2016 Sample Point
- 2017 Sample Point
- 2018 Sample Point
- 2013 Field Delineated Waterbody
- 2014 Field Delineated Waterbody
- 2015 Field Delineated Waterbody
- 2016 Field Delineated Waterbody
- 2017 Field Delineated Waterbody
- 2018 Field Delineated Waterbody
- 2013 Wetland**
- PEM
- PFO
- PSS
- PUB
- L1UB
- 2014 Wetland**
- PEM
- PFO
- PSS
- PUB
- 2015 Wetland**
- PEM
- PFO
- PSS
- PUB
- 2016 Wetland**
- PEM
- PFO
- PSS
- PUB
- 2017 Wetland**
- PEM
- PFO
- PSS
- PUB
- 2018 Wetland**
- PEM
- PFO
- PSS
- PUB

Appendix F
Exhibit F 12-7

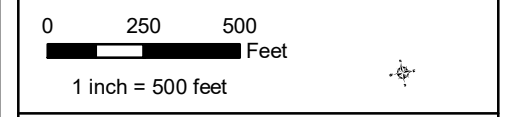
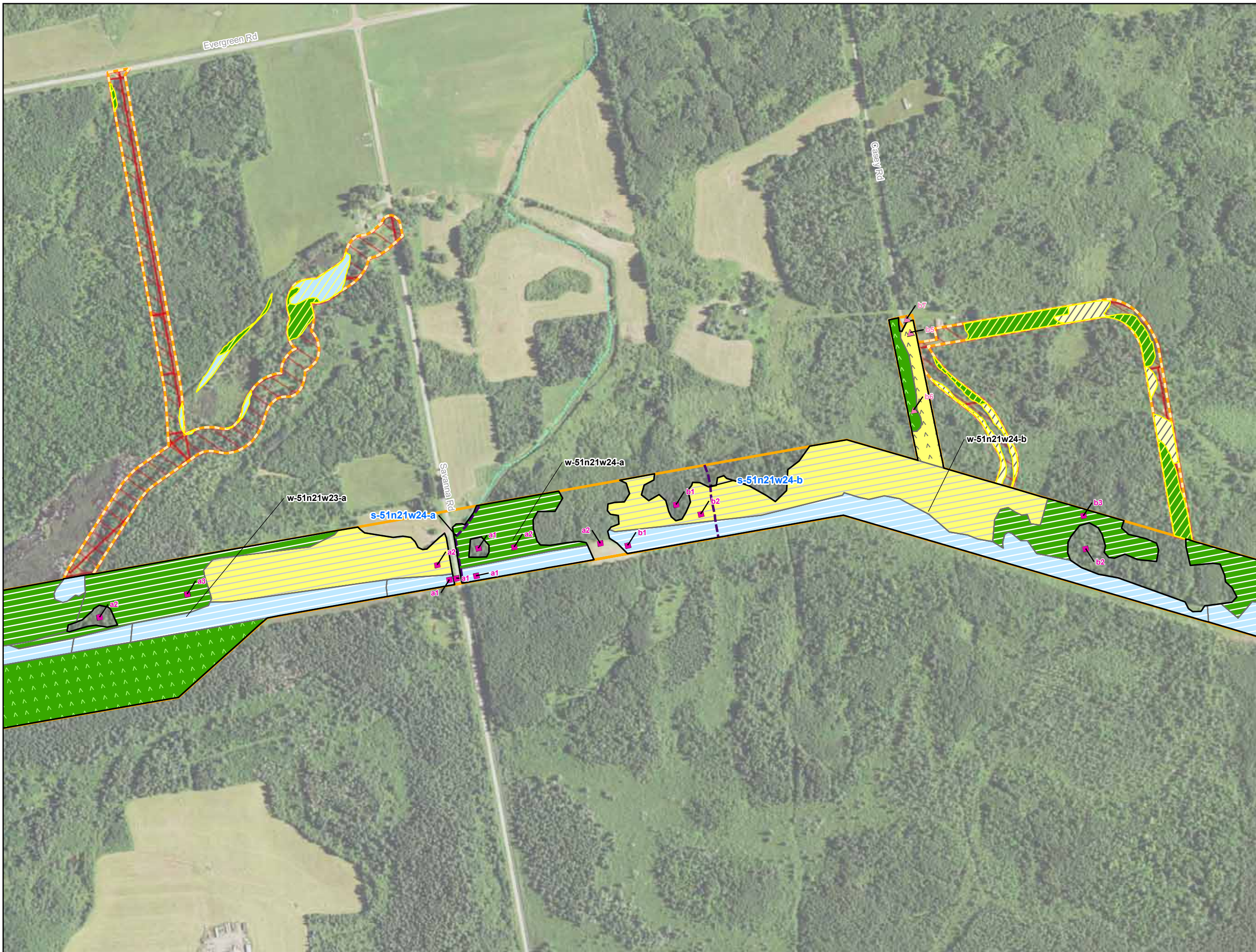
Enbridge

Field Collected Wetlands and Waterbodies

St. Louis County, Minnesota

For Environmental Review Purposes Only September 2018

Date: (9/20/2018) Source: Z:\Clients\IE_F\Enbridge\Line_3_Pull_ReplacementField_Data\Wetland_Waterbody\Reports\Wetland_Waterbody_20180631\Wetland_Waterbody_WB_AppendixF_Min.mxd



- Environmental Survey Corridor
- Access Road Survey Corridor
- Field Survey Not Complete
- Field Survey Not Required
- National Hydrography Dataset**
- Waterbody
- Intermittent Stream
- Perennial Stream
- Canal/Ditch
- NWI Wetland**
- PEM
- PFO
- PSS
- PUB
- L1U
- R2U; R4S; R5U; R3U
- Field Delineated Features**
- 2013 Sample Point
- 2014 Sample Point
- 2015 Sample Point
- 2016 Sample Point
- 2017 Sample Point
- 2018 Sample Point
- 2013 Field Delineated Waterbody
- 2014 Field Delineated Waterbody
- 2015 Field Delineated Waterbody
- 2016 Field Delineated Waterbody
- 2017 Field Delineated Waterbody
- 2018 Field Delineated Waterbody
- 2013 Wetland**
- PEM
- PFO
- PSS
- PUB
- L1UB
- 2014 Wetland**
- PEM
- PFO
- PSS
- PUB
- 2015 Wetland**
- PEM
- PFO
- PSS
- PUB
- 2016 Wetland**
- PEM
- PFO
- PSS
- PUB
- 2017 Wetland**
- PEM
- PFO
- PSS
- PUB
- 2018 Wetland**
- PEM
- PFO
- PSS
- PUB

Appendix F
Exhibit F 12-8

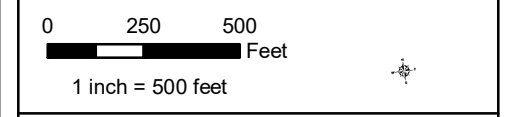
Enbridge

Field Collected Wetlands and Waterbodies

St. Louis County, Minnesota

For Environmental Review Purposes Only September 2018

Date: (9/20/2018) Source: Z:\Clients\IE_F\IE\bridge\Line_3_Pull_ReplacementField_Data\Wetland_Waterbody\Reports\Wetland_Waterbody_20180631\MIN\TCR_Wetland_WB_AppendixF_MIN.mxd



- Environmental Survey Corridor
- Access Road Survey Corridor
- Field Survey Not Complete
- Field Survey Not Required
- National Hydrography Dataset**
- Waterbody
- Intermittent Stream
- Perennial Stream
- Canal/Ditch
- NWI Wetland**
- PEM
- PSS
- L1U
- PFO
- PUB
- R2U; R4S; R5U; R3U
- Field Delineated Features**
- 2013 Sample Point
- 2014 Sample Point
- 2015 Sample Point
- 2016 Sample Point
- 2017 Sample Point
- 2018 Sample Point
- 2013 Field Delineated Waterbody
- 2014 Field Delineated Waterbody
- 2015 Field Delineated Waterbody
- 2016 Field Delineated Waterbody
- 2017 Field Delineated Waterbody
- 2018 Field Delineated Waterbody
- 2013 Wetland**
- PEM
- PFO
- PSS
- PUB
- L1UB
- 2014 Wetland**
- PEM
- PFO
- PSS
- PUB
- 2015 Wetland**
- PEM
- PFO
- PSS
- PUB
- 2016 Wetland**
- PEM
- PFO
- PSS
- PUB
- 2017 Wetland**
- PEM
- PFO
- PSS
- PUB
- 2018 Wetland**
- PEM
- PFO
- PSS
- PUB

Appendix F
Exhibit F 12-9

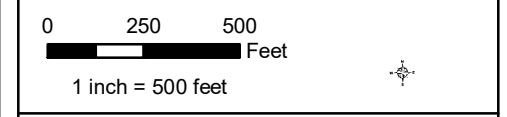
Enbridge

Field Collected Wetlands and Waterbodies

St. Louis County, Minnesota

For Environmental Review Purposes Only September 2018

Date: (9/20/2018) Source: Z:\Clients\IE_F\Enbridge\Line_3_Pull_ReplacementField_Data\Wetland_Waterbody\Reports\Wetland_Waterbody_20180631\Wetland_Waterbody_WB_AppendixF_MN.mxd



- Environmental Survey Corridor
- Access Road Survey Corridor
- Field Survey Not Complete
- Field Survey Not Required
- National Hydrography Dataset**
- Waterbody
- Intermittent Stream
- Perennial Stream
- Canal/Ditch
- NWI Wetland**
- PEM
- PSS
- L1U
- PFO
- PUB
- R2U; R4S; R5U; R3U
- Field Delineated Features**
- 2013 Sample Point
- 2014 Sample Point
- 2015 Sample Point
- 2016 Sample Point
- 2017 Sample Point
- 2018 Sample Point
- 2013 Field Delineated Waterbody
- 2014 Field Delineated Waterbody
- 2015 Field Delineated Waterbody
- 2016 Field Delineated Waterbody
- 2017 Field Delineated Waterbody
- 2018 Field Delineated Waterbody
- 2013 Wetland**
- PEM
- PFO
- PSS
- PUB
- L1UB
- 2014 Wetland**
- PEM
- PFO
- PSS
- PUB
- 2015 Wetland**
- PEM
- PFO
- PSS
- PUB
- 2016 Wetland**
- PEM
- PFO
- PSS
- PUB
- 2017 Wetland**
- PEM
- PFO
- PSS
- PUB
- 2018 Wetland**
- PEM
- PFO
- PSS
- PUB

Appendix F
Exhibit F 12-10

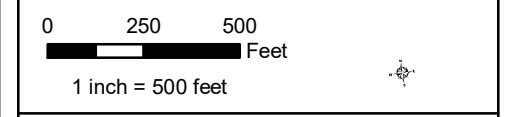
Enbridge

Field Collected Wetlands and Waterbodies

St. Louis County, Minnesota

For Environmental Review Purposes Only September 2018

Date: (9/20/2018) Source: Z:\Clients\IE_F\Enbridge\Line_3_Pull_ReplacementField_Data\Wetland_Waterbody\Reports\Wetland_Waterbody_20180631\Wetland_Waterbody_WB_AppendixF_MN.mxd



- Environmental Survey Corridor
- Access Road Survey Corridor
- Field Survey Not Complete
- Field Survey Not Required
- National Hydrography Dataset**
- Waterbody
- Intermittent Stream
- Perennial Stream
- Canal/Ditch
- NWI Wetland**
- PEM
- PSS
- L1U
- PFO
- PUB
- R2U; R4S; R5U; R3U
- Field Delineated Features**
- 2013 Sample Point
- 2014 Sample Point
- 2015 Sample Point
- 2016 Sample Point
- 2017 Sample Point
- 2018 Sample Point
- 2013 Field Delineated Waterbody
- 2014 Field Delineated Waterbody
- 2015 Field Delineated Waterbody
- 2016 Field Delineated Waterbody
- 2017 Field Delineated Waterbody
- 2018 Field Delineated Waterbody
- 2013 Wetland**
- PEM
- PFO
- PSS
- PUB
- L1UB
- 2014 Wetland**
- PEM
- PFO
- PSS
- PUB
- 2015 Wetland**
- PEM
- PFO
- PSS
- PUB
- 2016 Wetland**
- PEM
- PFO
- PSS
- PUB
- 2017 Wetland**
- PEM
- PFO
- PSS
- PUB
- 2018 Wetland**
- PEM
- PFO
- PSS
- PUB

Appendix F
Exhibit F 12-11

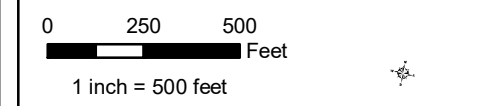
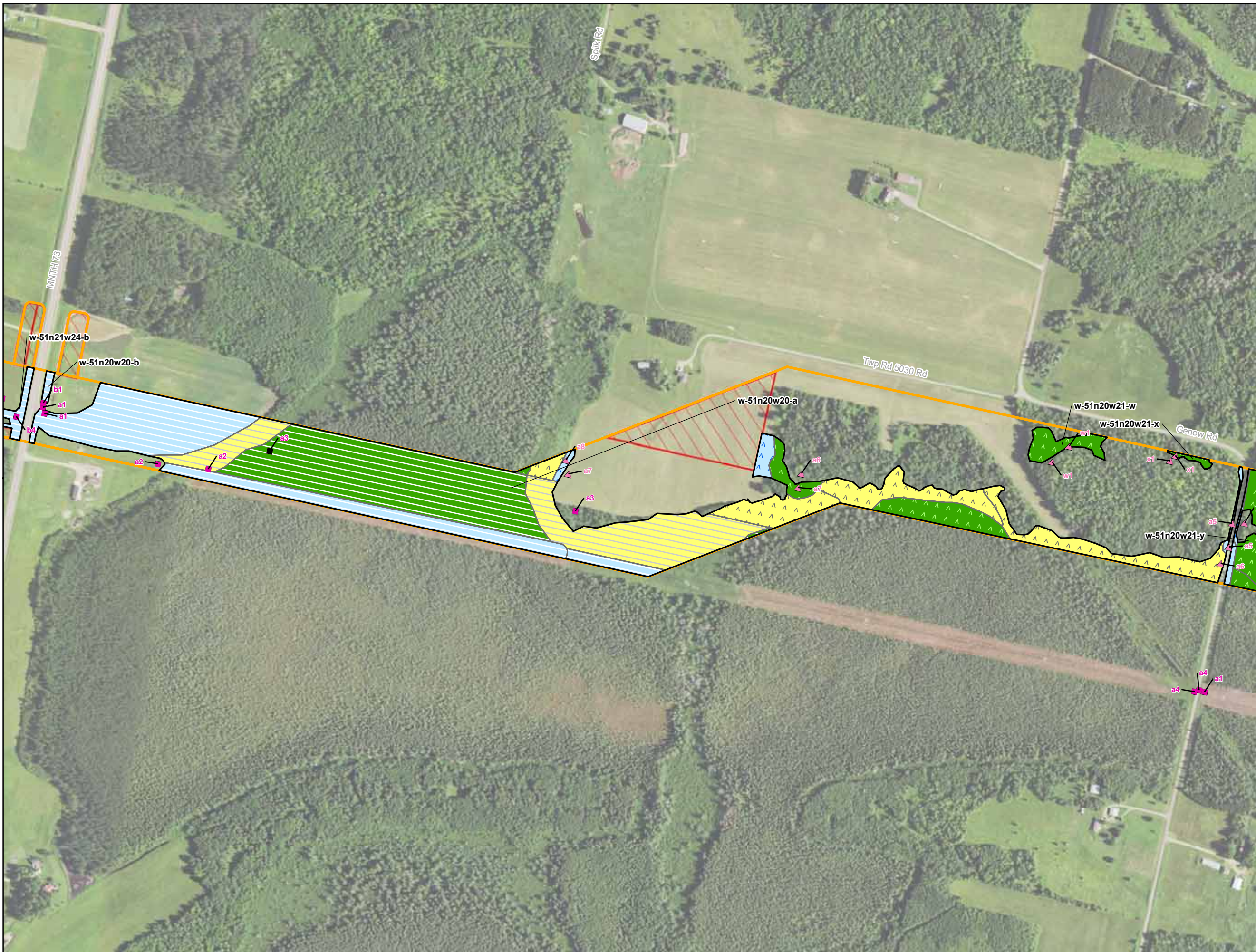
Enbridge

Field Collected Wetlands and Waterbodies

St. Louis County, Minnesota

For Environmental Review Purposes Only September 2018

Date: (9/20/2018) Source: Z:\Clients\IE_F\Enbridge\Line_3_Pull_ReplacementField_Data\Wetland_Reports\Wetland_Waterbody\Reports\Wetland_Waterbody_20180631\Wetland_Waterbody_WB_AppendixF_Wetland_WB.mxd



- Environmental Survey Corridor
- Access Road Survey Corridor
- Field Survey Not Complete
- Field Survey Not Required
- National Hydrography Dataset**
- Waterbody
- Intermittent Stream
- Perennial Stream
- Canal/Ditch
- NWI Wetland**
- PEM
- PFO
- PSS
- PUB
- L1U
- R2U; R4S; R5U; R3U
- Field Delineated Features**
- 2013 Sample Point
- 2014 Sample Point
- 2015 Sample Point
- 2016 Sample Point
- 2017 Sample Point
- 2018 Sample Point
- 2013 Field Delineated Waterbody
- 2014 Field Delineated Waterbody
- 2015 Field Delineated Waterbody
- 2016 Field Delineated Waterbody
- 2017 Field Delineated Waterbody
- 2018 Field Delineated Waterbody
- 2013 Wetland**
- PEM
- PFO
- PSS
- PUB
- L1UB
- 2014 Wetland**
- PEM
- PFO
- PSS
- PUB
- 2015 Wetland**
- PEM
- PFO
- PSS
- PUB
- 2016 Wetland**
- PEM
- PFO
- PSS
- PUB
- 2017 Wetland**
- PEM
- PFO
- PSS
- PUB
- 2018 Wetland**
- PEM
- PFO
- PSS
- PUB

Appendix F
Exhibit F 12-12

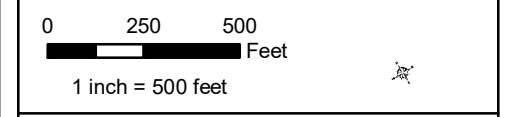
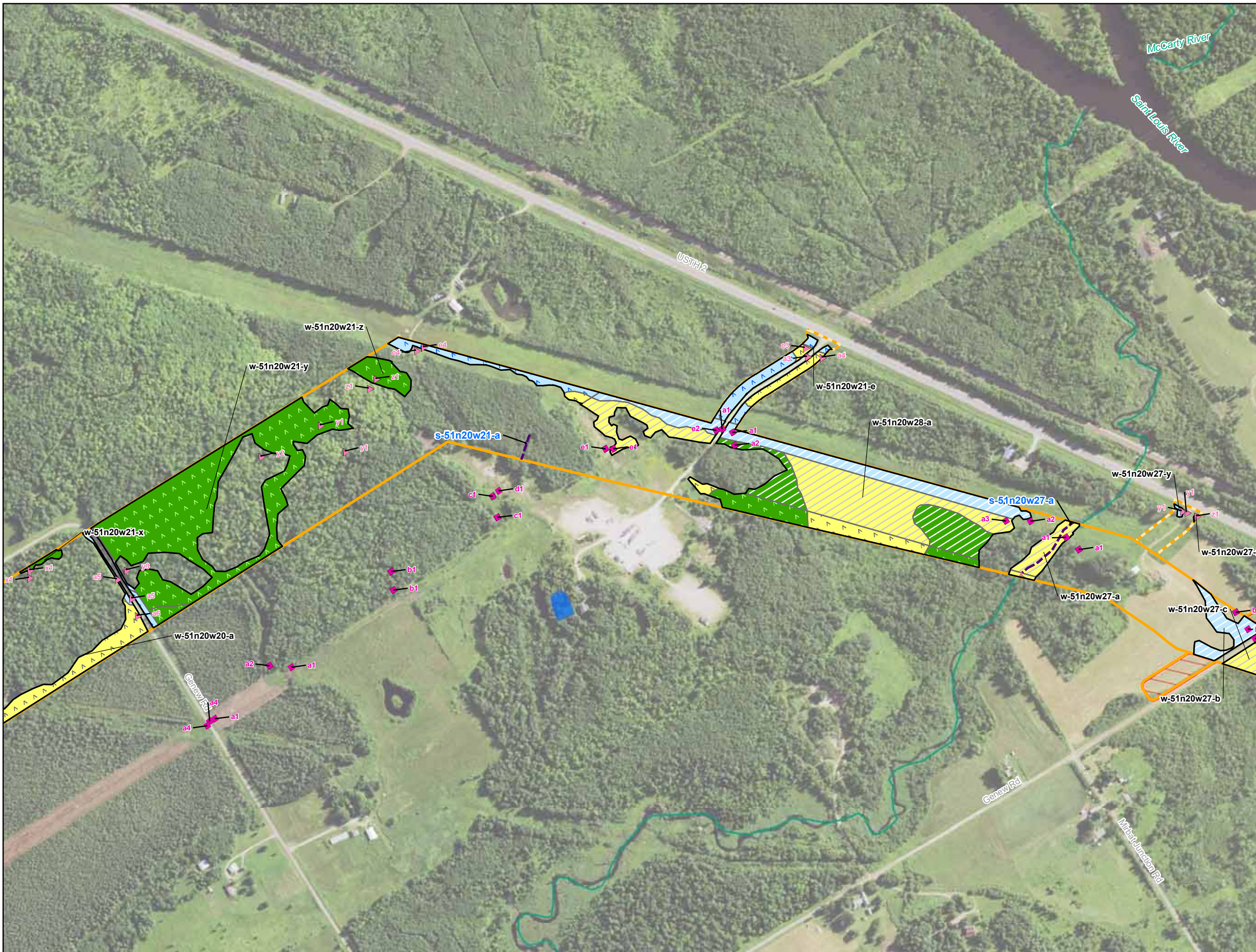
Enbridge

Field Collected Wetlands and Waterbodies

St. Louis County, Minnesota

For Environmental Review Purposes Only September 2018

Date: (9/20/2018) Source: Z:\Clients\IE_F\IE\bridge\Line_3_Pull_ReplacementField_Data\Wetland_Waterbody\Reports\Wetland_Waterbody_20180631\Wetland_Waterbody_WB_AppendixF_Min.mxd




- Environmental Survey Corridor
- Access Road Survey Corridor
- Field Survey Not Complete
- Field Survey Not Required
- National Hydrography Dataset**
- Waterbody
- Intermittent Stream
- Perennial Stream
- Canal/Ditch
- NWI Wetland**
- PEM
- PFO
- PSS
- PUB
- L1U
- R2U; R4S; R5U; R3U
- Field Delineated Features**
- 2013 Sample Point
- 2014 Sample Point
- 2015 Sample Point
- 2016 Sample Point
- 2017 Sample Point
- 2018 Sample Point
- 2013 Field Delineated Waterbody
- 2014 Field Delineated Waterbody
- 2015 Field Delineated Waterbody
- 2016 Field Delineated Waterbody
- 2017 Field Delineated Waterbody
- 2018 Field Delineated Waterbody
- 2013 Wetland**
- PEM
- PFO
- PSS
- PUB
- L1UB
- 2014 Wetland**
- PEM
- PFO
- PSS
- PUB
- 2015 Wetland**
- PEM
- PFO
- PSS
- PUB
- 2016 Wetland**
- PEM
- PFO
- PSS
- PUB
- 2017 Wetland**
- PEM
- PFO
- PSS
- PUB
- 2018 Wetland**
- PEM
- PFO
- PSS
- PUB

Appendix F
Exhibit F 12-13

Enbridge

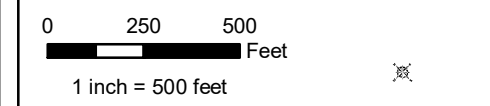
Field Collected Wetlands and Waterbodies

St. Louis County, Minnesota



For Environmental Review Purposes Only September 2018

Date: (9/20/2018) Source: Z:\Clients\IE_F\Enbridge\Line_3_Pull_ReplacementField_Data\Wetland_Waterbody\Reports\Wetland_Waterbody_20180631\Wetland_Waterbody_WB_AppendixF_Wetland_WB.mxd



- Environmental Survey Corridor
- Access Road Survey Corridor
- Field Survey Not Complete
- Field Survey Not Required
- National Hydrography Dataset**
- Waterbody
- Intermittent Stream
- Perennial Stream
- Canal/Ditch
- NWI Wetland**
- PEM
- PFO
- PSS
- PUB
- L1U
- R2U; R4S; R5U; R3U
- Field Delineated Features**
- 2013 Sample Point
- 2014 Sample Point
- 2015 Sample Point
- 2016 Sample Point
- 2017 Sample Point
- 2018 Sample Point
- 2013 Field Delineated Waterbody
- 2014 Field Delineated Waterbody
- 2015 Field Delineated Waterbody
- 2016 Field Delineated Waterbody
- 2017 Field Delineated Waterbody
- 2018 Field Delineated Waterbody
- 2013 Wetland**
- PEM
- PFO
- PSS
- PUB
- L1UB
- 2014 Wetland**
- PEM
- PFO
- PSS
- PUB
- 2015 Wetland**
- PEM
- PFO
- PSS
- PUB
- 2016 Wetland**
- PEM
- PFO
- PSS
- PUB
- 2017 Wetland**
- PEM
- PFO
- PSS
- PUB
- 2018 Wetland**
- PEM
- PFO
- PSS
- PUB

Appendix F
Exhibit F 12-14

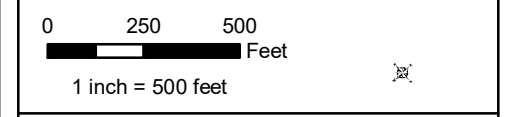
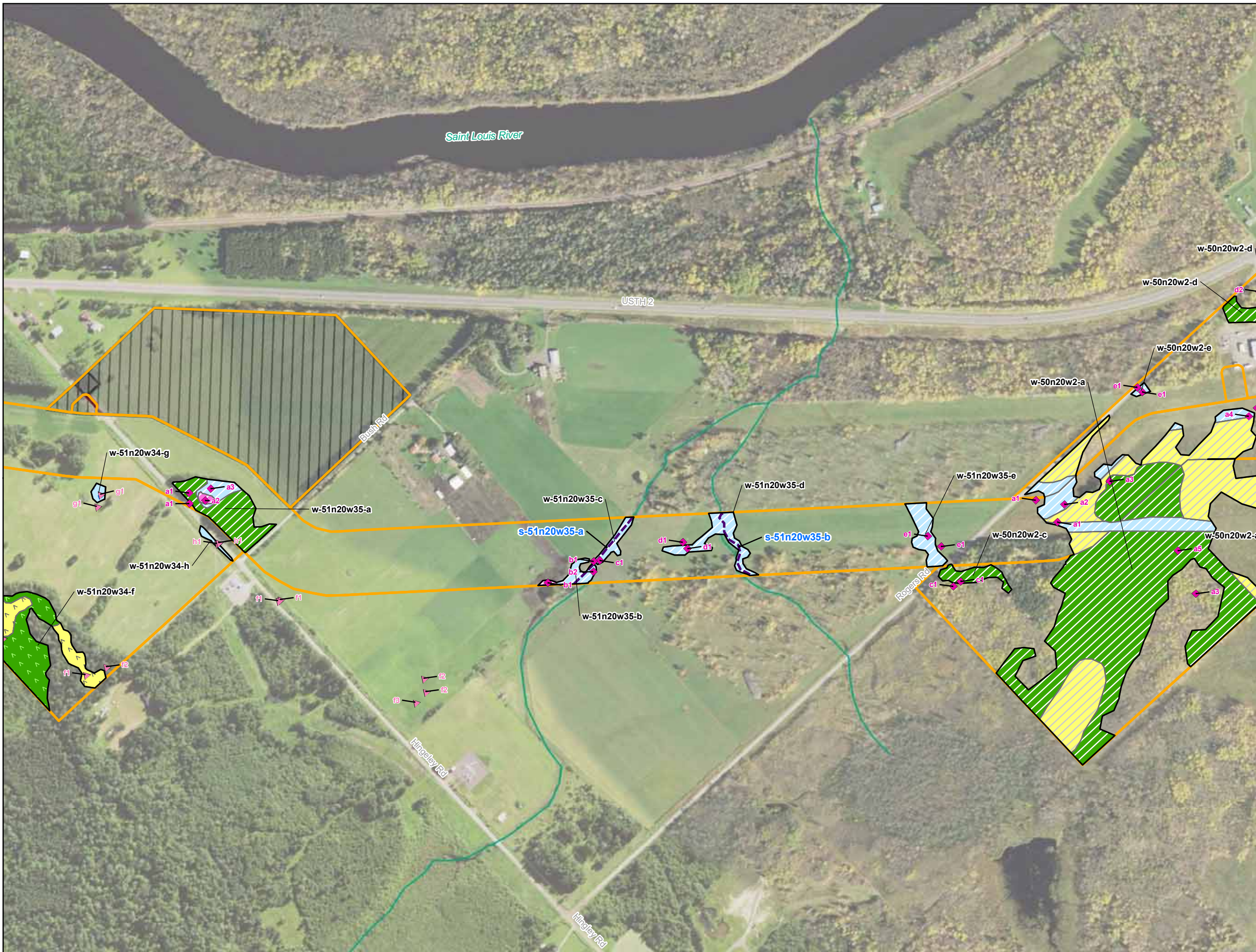
Enbridge

Field Collected Wetlands and Waterbodies

St. Louis County, Minnesota

For Environmental Review Purposes Only September 2018

Date: (9/20/2018) Source: Z:\Clients\IE_F\Enbridge\Line_3_Pull_ReplacementField_Data\Wetland_Waterbody\Reports\Wetland_Waterbody_20180631\Wetland_Waterbody_WB_AppendixF_Wetland_WB.mxd




- Environmental Survey Corridor
- Access Road Survey Corridor
- Field Survey Not Complete
- Field Survey Not Required
- National Hydrography Dataset**
- ~ Waterbody
- ~ Intermittent Stream
- ~ Perennial Stream
- ~ Canal/Ditch
- NWI Wetland**
- PEM
- PFO
- PSS
- PUB
- L1U
- R2U; R4S; R5U; R3U
- Field Delineated Features**
- 2013 Sample Point
- 2014 Sample Point
- 2015 Sample Point
- 2016 Sample Point
- 2017 Sample Point
- 2018 Sample Point
- ~ 2013 Field Delineated Waterbody
- ~ 2014 Field Delineated Waterbody
- ~ 2015 Field Delineated Waterbody
- ~ 2016 Field Delineated Waterbody
- ~ 2017 Field Delineated Waterbody
- ~ 2018 Field Delineated Waterbody
- 2013 Wetland**
- PEM
- PFO
- PSS
- PUB
- L1UB
- 2014 Wetland**
- PEM
- PFO
- PSS
- PUB
- 2015 Wetland**
- PEM
- PFO
- PSS
- PUB
- 2016 Wetland**
- PEM
- PFO
- PSS
- PUB
- 2017 Wetland**
- PEM
- PFO
- PSS
- PUB
- 2018 Wetland**
- PEM
- PFO
- PSS
- PUB

Appendix F
Exhibit F 12-15

Enbridge

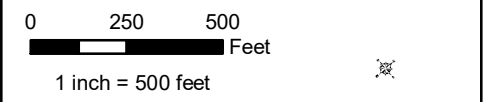
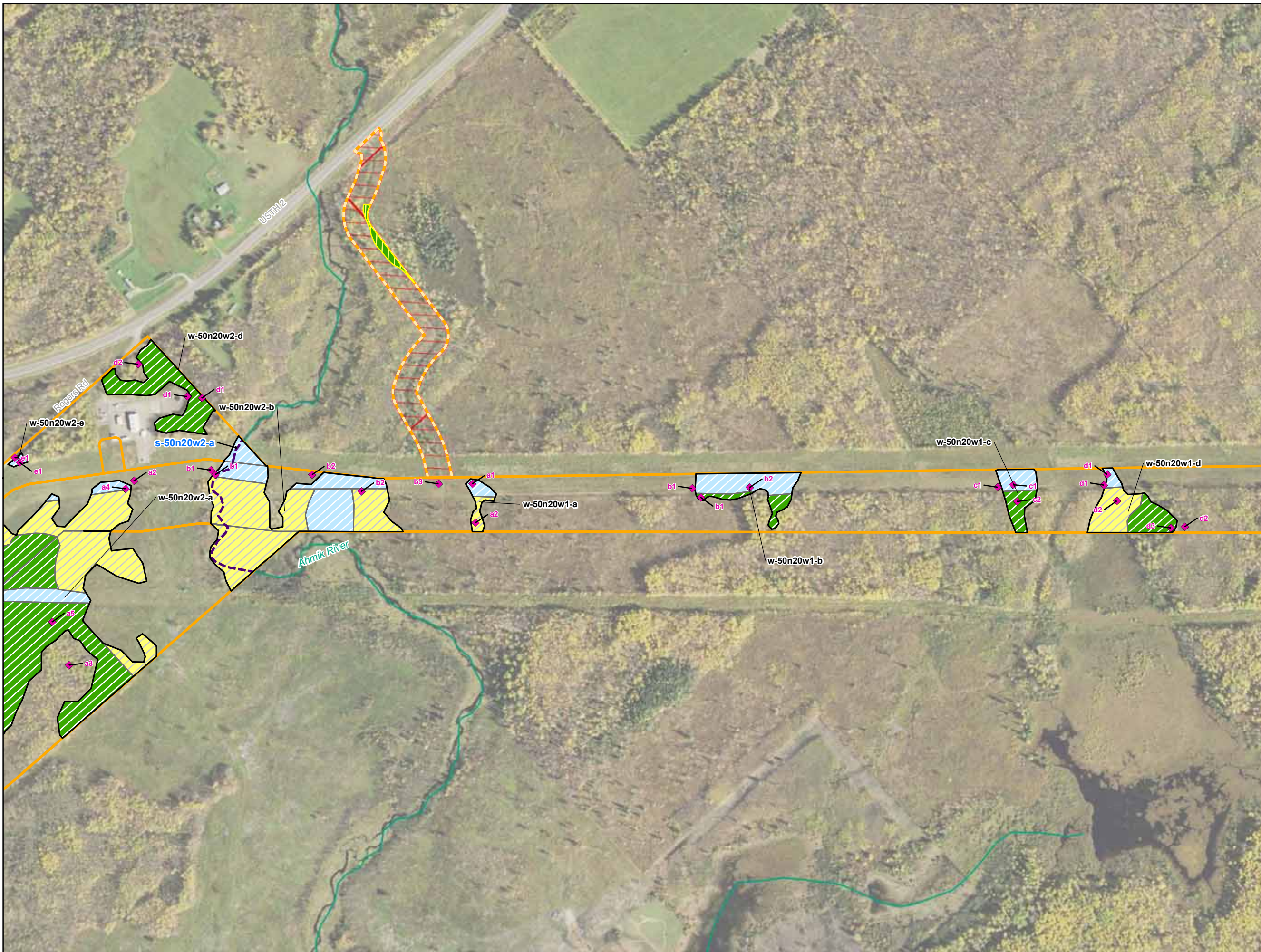
Field Collected Wetlands and Waterbodies

St. Louis County, Minnesota



For Environmental Review Purposes Only September 2018

Source: Z:\Clients\IE_F\H\bridge\Line_3_Pull_ReplacementField_Data\Wetland_Waterbody\Reports\Wetland_Waterbody_20180631\Wetland_Waterbody_WB_AppendixF_Wetland_WB.mxd



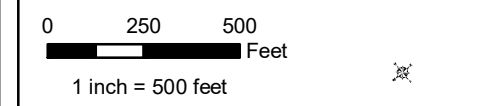
- Environmental Survey Corridor
- Access Road Survey Corridor
- Field Survey Not Complete
- Field Survey Not Required
- National Hydrography Dataset**
- Waterbody
- Intermittent Stream
- Perennial Stream
- Canal/Ditch
- NWI Wetland**
- PEM
- PSS
- L1U
- PFO
- PUB
- R2U; R4S; R5U; R3U
- Field Delineated Features**
- 2013 Sample Point
- 2014 Sample Point
- 2015 Sample Point
- 2016 Sample Point
- 2017 Sample Point
- 2018 Sample Point
- 2013 Field Delineated Waterbody
- 2014 Field Delineated Waterbody
- 2015 Field Delineated Waterbody
- 2016 Field Delineated Waterbody
- 2017 Field Delineated Waterbody
- 2018 Field Delineated Waterbody
- 2013 Wetland**
- PEM
- PFO
- PSS
- PUB
- L1UB
- 2014 Wetland**
- PEM
- PFO
- PSS
- PUB
- 2015 Wetland**
- PEM
- PFO
- PSS
- PUB
- 2016 Wetland**
- PEM
- PFO
- PSS
- PUB
- 2017 Wetland**
- PEM
- PFO
- PSS
- PUB
- 2018 Wetland**
- PEM
- PFO
- PSS
- PUB

**Appendix F
Exhibit F 12-16**

Enbridge
**Field Collected Wetlands and
Waterbodies**
St. Louis County, Minnesota



Source: Z:\Clients\IE_F\IE\bridge\Line_3_Pull_ReplacementField_Data\Wetland_Waterbody\Reports\Wetland_Waterbody_20180631\Wetland_Waterbody_WB_AppendixF_Min.mxd



- Environmental Survey Corridor
- Access Road Survey Corridor
- Field Survey Not Complete
- Field Survey Not Required
- National Hydrography Dataset**
- Waterbody
- Intermittent Stream
- Perennial Stream
- Canal/Ditch
- NWI Wetland**
- PEM
- PFO
- PSS
- PUB
- L1U
- R2U; R4S; R5U; R3U
- Field Delineated Features**
- 2013 Sample Point
- 2014 Sample Point
- 2015 Sample Point
- 2016 Sample Point
- 2017 Sample Point
- 2018 Sample Point
- 2013 Field Delineated Waterbody
- 2014 Field Delineated Waterbody
- 2015 Field Delineated Waterbody
- 2016 Field Delineated Waterbody
- 2017 Field Delineated Waterbody
- 2018 Field Delineated Waterbody
- 2013 Wetland**
- PEM
- PFO
- PSS
- PUB
- L1UB
- 2014 Wetland**
- PEM
- PFO
- PSS
- PUB
- 2015 Wetland**
- PEM
- PFO
- PSS
- PUB
- 2016 Wetland**
- PEM
- PFO
- PSS
- PUB
- 2017 Wetland**
- PEM
- PFO
- PSS
- PUB
- 2018 Wetland**
- PEM
- PFO
- PSS
- PUB

**Appendix F
Exhibit F 12-17**

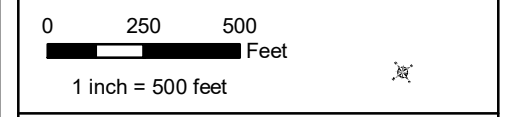
Enbridge

**Field Collected Wetlands and
Waterbodies**

St. Louis County, Minnesota



Date: (9/20/2018) Source: Z:\Clients\IE_F\IE\bridge\Line_3_Pull_ReplacementField_Data\Wetland_Waterbody\Reports\Wetland_Waterbody_20180631\Wetland_Waterbody_WB_AppendixF_Wetland_WB.mxd



- Environmental Survey Corridor
- Access Road Survey Corridor
- Field Survey Not Complete
- Field Survey Not Required
- National Hydrography Dataset**
- Waterbody
- Intermittent Stream
- Perennial Stream
- Canal/Ditch
- NWI Wetland**
- PEM
- PFO
- PSS
- PUB
- L1U
- R2U; R4S; R5U; R3U
- Field Delineated Features**
- 2013 Sample Point
- 2014 Sample Point
- 2015 Sample Point
- 2016 Sample Point
- 2017 Sample Point
- 2018 Sample Point
- 2013 Field Delineated Waterbody
- 2014 Field Delineated Waterbody
- 2015 Field Delineated Waterbody
- 2016 Field Delineated Waterbody
- 2017 Field Delineated Waterbody
- 2018 Field Delineated Waterbody
- 2013 Wetland**
- PEM
- PFO
- PSS
- PUB
- L1UB
- 2014 Wetland**
- PEM
- PFO
- PSS
- PUB
- 2015 Wetland**
- PEM
- PFO
- PSS
- PUB
- 2016 Wetland**
- PEM
- PFO
- PSS
- PUB
- 2017 Wetland**
- PEM
- PFO
- PSS
- PUB
- 2018 Wetland**
- PEM
- PFO
- PSS
- PUB

Appendix F
Exhibit F 12-18

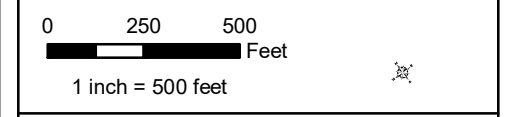
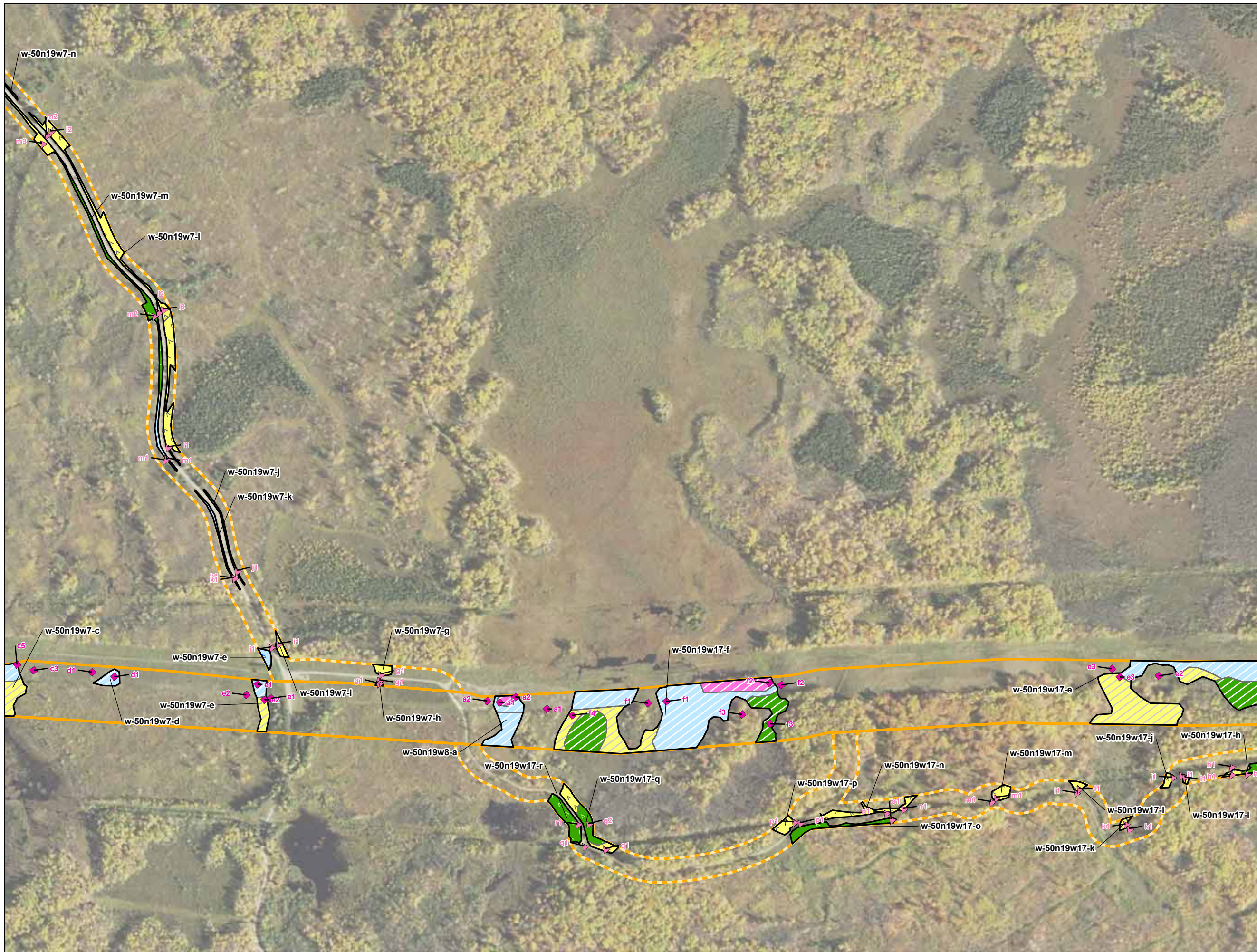
Enbridge

Field Collected Wetlands and Waterbodies

St. Louis County, Minnesota

For Environmental Review Purposes Only September 2018

Date: (9/20/2018) Source: Z:\Clients\IE_F\Enbridge\Line_3_Pull_ReplacementField_Data\Wetland_Waterbody\Reports\Wetland_Waterbody_2018060310M\T3CR_Wetland_WB_AppendixF_WIN.mxd



- Environmental Survey Corridor
- Access Road Survey Corridor
- Field Survey Not Complete
- Field Survey Not Required
- National Hydrography Dataset**
- Waterbody
- Intermittent Stream
- Perennial Stream
- Canal/Ditch
- NWI Wetland**
- PEM
- PFO
- PSS
- PUB
- L1U
- R2U; R4S; R5U; R3U
- Field Delineated Features**
- 2013 Sample Point
- 2014 Sample Point
- 2015 Sample Point
- 2016 Sample Point
- 2017 Sample Point
- 2018 Sample Point
- 2013 Field Delineated Waterbody
- 2014 Field Delineated Waterbody
- 2015 Field Delineated Waterbody
- 2016 Field Delineated Waterbody
- 2017 Field Delineated Waterbody
- 2018 Field Delineated Waterbody
- 2013 Wetland**
- PEM
- PFO
- PSS
- PUB
- L1UB
- 2014 Wetland**
- PEM
- PFO
- PSS
- PUB
- 2015 Wetland**
- PEM
- PFO
- PSS
- PUB
- 2016 Wetland**
- PEM
- PFO
- PSS
- PUB
- 2017 Wetland**
- PEM
- PFO
- PSS
- PUB
- 2018 Wetland**
- PEM
- PFO
- PSS
- PUB

Appendix F
Exhibit F 12-19

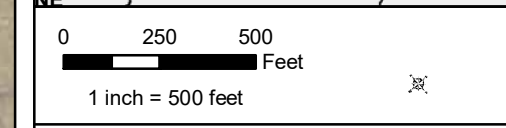
Enbridge

Field Collected Wetlands and Waterbodies

St. Louis County, Minnesota

For Environmental Review Purposes Only September 2018

Source: Z:\Clients\IE_FHE\bridge\Line_3_Pull_ReplacementField_Data\Wetland\Wetland\Waterbody\Reports\Wetland_Waterbody_2018060310M1130R_Wetland_WB_AppendixF_Min.mxd



- Environmental Survey Corridor
- Access Road Survey Corridor
- Field Survey Not Complete
- Field Survey Not Required
- National Hydrography Dataset**
- Waterbody
- Intermittent Stream
- Perennial Stream
- Canal/Ditch
- NWI Wetland**
- PEM
- PFO
- PSS
- PUB
- L1U
- R2U; R4S; R5U; R3U
- Field Delineated Features**
- 2013 Sample Point
- 2014 Sample Point
- 2015 Sample Point
- 2016 Sample Point
- 2017 Sample Point
- 2018 Sample Point
- 2013 Field Delineated Waterbody
- 2014 Field Delineated Waterbody
- 2015 Field Delineated Waterbody
- 2016 Field Delineated Waterbody
- 2017 Field Delineated Waterbody
- 2018 Field Delineated Waterbody
- 2013 Wetland**
- PEM
- PFO
- PSS
- PUB
- L1UB
- 2014 Wetland**
- PEM
- PFO
- PSS
- PUB
- 2015 Wetland**
- PEM
- PFO
- PSS
- PUB
- 2016 Wetland**
- PEM
- PFO
- PSS
- PUB
- 2017 Wetland**
- PEM
- PFO
- PSS
- PUB
- 2018 Wetland**
- PEM
- PFO
- PSS
- PUB

**Appendix F
Exhibit F 12-20**

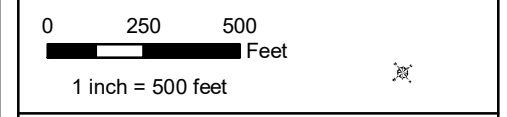
Enbridge

**Field Collected Wetlands and
Waterbodies**

St. Louis County, Minnesota



Source: Z:\Clients\IE_F\IE\bridge\Line_3_Pull_ReplacementField_Data\Wetland_Waterbody\Reports\Wetland_Waterbody_20180310\MT13CR_Wetland_WB_AppendixF_MN.mxd Date: (9/20/2018)



- Environmental Survey Corridor
- Access Road Survey Corridor
- Field Survey Not Complete
- Field Survey Not Required
- National Hydrography Dataset**
- Waterbody
- Intermittent Stream
- Perennial Stream
- Canal/Ditch
- NWI Wetland**
- PEM
- PFO
- PSS
- PUB
- L1U
- R2U; R4S; R5U; R3U
- Field Delineated Features**
- 2013 Sample Point
- 2014 Sample Point
- 2015 Sample Point
- 2016 Sample Point
- 2017 Sample Point
- 2018 Sample Point
- 2013 Field Delineated Waterbody
- 2014 Field Delineated Waterbody
- 2015 Field Delineated Waterbody
- 2016 Field Delineated Waterbody
- 2017 Field Delineated Waterbody
- 2018 Field Delineated Waterbody
- 2013 Wetland**
- PEM
- PFO
- PSS
- PUB
- L1UB
- 2014 Wetland**
- PEM
- PFO
- PSS
- PUB
- 2015 Wetland**
- PEM
- PFO
- PSS
- PUB
- 2016 Wetland**
- PEM
- PFO
- PSS
- PUB
- 2017 Wetland**
- PEM
- PFO
- PSS
- PUB
- 2018 Wetland**
- PEM
- PFO
- PSS
- PUB

**Appendix F
Exhibit F 12-21**

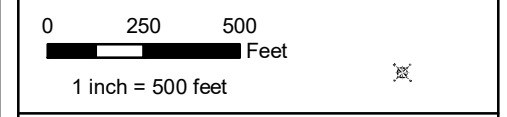
Enbridge

**Field Collected Wetlands and
Waterbodies**

St. Louis County, Minnesota



Date: (9/20/2018) Source: Z:\Clients\IE_F\IE\bridge\Line_3_Full_Replacement\Field_Data\Wetland\Wetland\Waterbody\Reports\Wetland_Waterbody\20180631\Wetland_Waterbody_WB_AppendixF_Min.mxd



- Environmental Survey Corridor
- Access Road Survey Corridor
- Field Survey Not Complete
- Field Survey Not Required
- National Hydrography Dataset**
 - Waterbody
 - Intermittent Stream
 - Perennial Stream
 - Canal/Ditch
- NWI Wetland**
 - PEM
 - PFO
 - PSS
 - PUB
 - L1U
 - R2U; R4S; R5U; R3U
- Field Delineated Features**
 - 2013 Sample Point
 - 2014 Sample Point
 - 2015 Sample Point
 - 2016 Sample Point
 - 2017 Sample Point
 - 2018 Sample Point
 - 2013 Field Delineated Waterbody
 - 2014 Field Delineated Waterbody
 - 2015 Field Delineated Waterbody
 - 2016 Field Delineated Waterbody
 - 2017 Field Delineated Waterbody
 - 2018 Field Delineated Waterbody
- 2013 Wetland**
 - PEM
 - PFO
 - PSS
 - PUB
 - L1UB
- 2014 Wetland**
 - PEM
 - PFO
 - PSS
 - PUB
- 2015 Wetland**
 - PEM
 - PFO
 - PSS
 - PUB
- 2016 Wetland**
 - PEM
 - PFO
 - PSS
 - PUB
- 2017 Wetland**
 - PEM
 - PFO
 - PSS
 - PUB
- 2018 Wetland**
 - PEM
 - PFO
 - PSS
 - PUB

Appendix F
Exhibit F 12-22

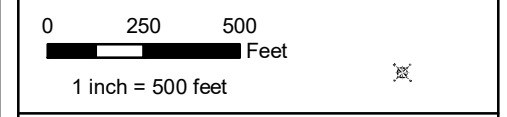
Enbridge

Field Collected Wetlands and Waterbodies

St. Louis County, Minnesota

For Environmental Review Purposes Only September 2018

Date: (9/20/2018) Source: Z:\Clients\IE_F\Enbridge\Line_3_Pull_ReplacementField_Data\Wetland_Waterbody\Reports\Wetland_Waterbody_20180831\Wetland_Waterbody_WB_AppendixF_Min.mxd



- Environmental Survey Corridor
- Access Road Survey Corridor
- Field Survey Not Complete
- Field Survey Not Required
- National Hydrography Dataset**
- Waterbody
- Intermittent Stream
- Perennial Stream
- Canal/Ditch
- NWI Wetland**
- PEM
- PFO
- PSS
- PUB
- L1U
- R2U; R4S; R5U; R3U
- Field Delineated Features**
- 2013 Sample Point
- 2014 Sample Point
- 2015 Sample Point
- 2016 Sample Point
- 2017 Sample Point
- 2018 Sample Point
- 2013 Field Delineated Waterbody
- 2014 Field Delineated Waterbody
- 2015 Field Delineated Waterbody
- 2016 Field Delineated Waterbody
- 2017 Field Delineated Waterbody
- 2018 Field Delineated Waterbody
- 2013 Wetland**
- PEM
- PFO
- PSS
- PUB
- L1UB
- 2014 Wetland**
- PEM
- PFO
- PSS
- PUB
- 2015 Wetland**
- PEM
- PFO
- PSS
- PUB
- 2016 Wetland**
- PEM
- PFO
- PSS
- PUB
- 2017 Wetland**
- PEM
- PFO
- PSS
- PUB
- 2018 Wetland**
- PEM
- PFO
- PSS
- PUB

Appendix F
Exhibit F 12-23

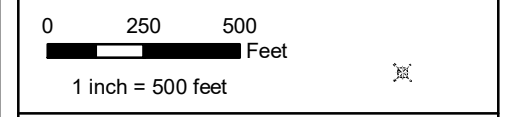
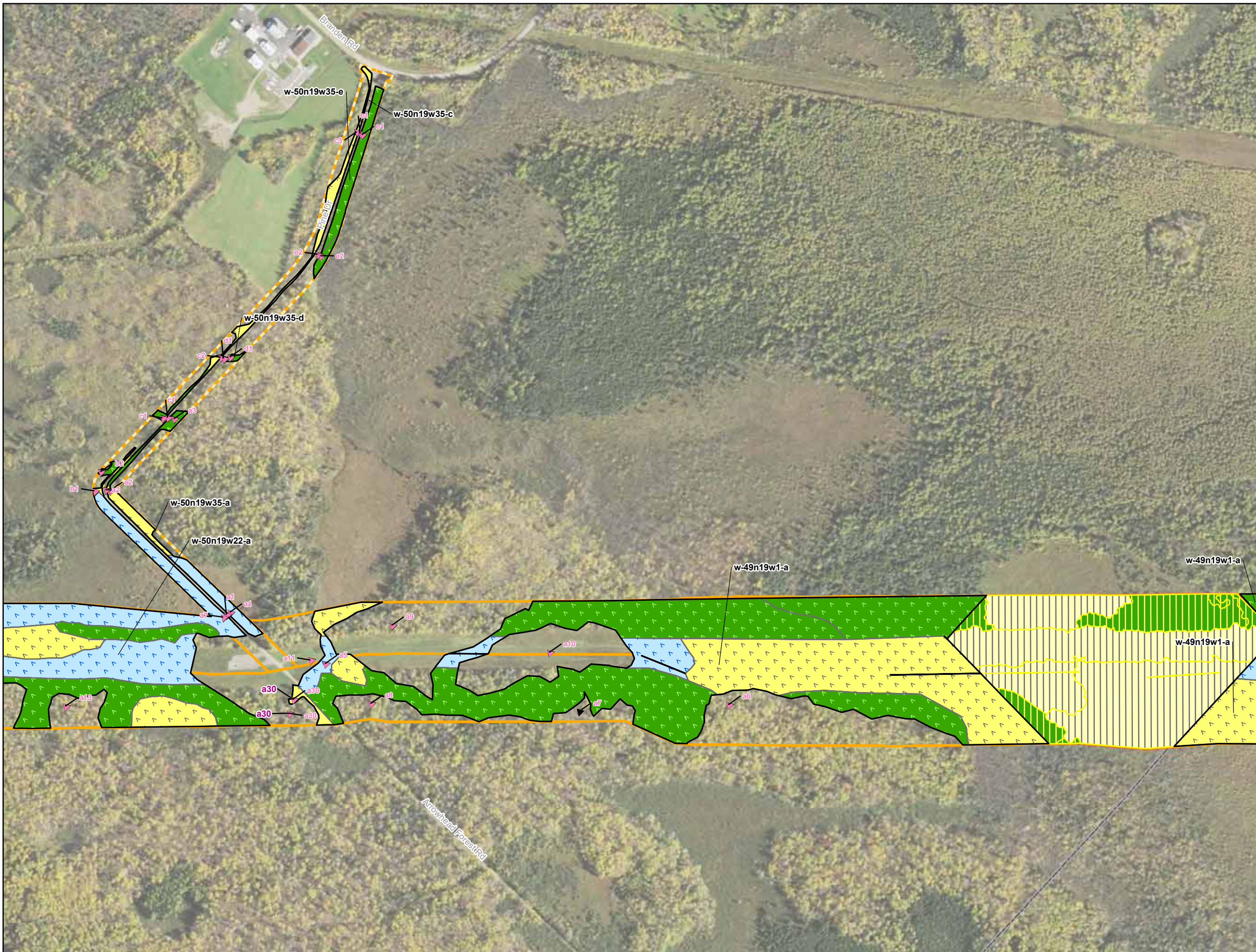
Enbridge

Field Collected Wetlands and Waterbodies

St. Louis County, Minnesota

For Environmental Review Purposes Only September 2018

Date: (9/20/2018) Source: Z:\Clients\IE_F\Enbridge\Line_3_Pull_ReplacementField_Data\Wetland\Waterbody\Reports\Wetland_Waterbody_20180631\Wetland_Waterbody_WB_AppendixF_Wetland_WB.mxd



- Environmental Survey Corridor
- Access Road Survey Corridor
- Field Survey Not Complete
- Field Survey Not Required
- National Hydrography Dataset**
- Waterbody
- Intermittent Stream
- Perennial Stream
- Canal/Ditch
- NWI Wetland**
- PEM
- PFO
- PSS
- PUB
- L1U
- R2U; R4S; R5U; R3U
- Field Delineated Features**
- 2013 Sample Point
- 2014 Sample Point
- 2015 Sample Point
- 2016 Sample Point
- 2017 Sample Point
- 2018 Sample Point
- 2013 Field Delineated Waterbody
- 2014 Field Delineated Waterbody
- 2015 Field Delineated Waterbody
- 2016 Field Delineated Waterbody
- 2017 Field Delineated Waterbody
- 2018 Field Delineated Waterbody
- 2013 Wetland**
- PEM
- PFO
- PSS
- PUB
- L1UB
- 2014 Wetland**
- PEM
- PFO
- PSS
- PUB
- 2015 Wetland**
- PEM
- PFO
- PSS
- PUB
- 2016 Wetland**
- PEM
- PFO
- PSS
- PUB
- 2017 Wetland**
- PEM
- PFO
- PSS
- PUB
- 2018 Wetland**
- PEM
- PFO
- PSS
- PUB

Appendix F
Exhibit F 12-25

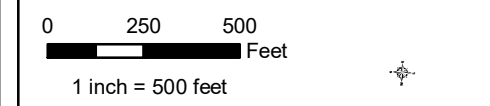
Enbridge

Field Collected Wetlands and Waterbodies

St. Louis County, Minnesota

For Environmental Review Purposes Only September 2018

Date: (9/20/2018) Source: Z:\Clients\IE_F\Enbridge\Line_3_Pull_ReplacementField_Data\Wetland_Waterbody\Reports\Wetland_Waterbody_20180631\Wetland_Waterbody_WB_AppendixF_Wetland_WB.mxd



- Environmental Survey Corridor
- Access Road Survey Corridor
- Field Survey Not Complete
- Field Survey Not Required
- National Hydrography Dataset**
- Waterbody
- Intermittent Stream
- Perennial Stream
- Canal/Ditch
- NWI Wetland**
- PEM
- PSS
- L1U
- PFO
- PUB
- R2U; R4S; R5U; R3U
- Field Delineated Features**
- 2013 Sample Point
- 2014 Sample Point
- 2015 Sample Point
- 2016 Sample Point
- 2017 Sample Point
- 2018 Sample Point
- 2013 Field Delineated Waterbody
- 2014 Field Delineated Waterbody
- 2015 Field Delineated Waterbody
- 2016 Field Delineated Waterbody
- 2017 Field Delineated Waterbody
- 2018 Field Delineated Waterbody
- 2013 Wetland**
- PEM
- PFO
- PSS
- PUB
- L1UB
- 2014 Wetland**
- PEM
- PFO
- PSS
- PUB
- 2015 Wetland**
- PEM
- PFO
- PSS
- PUB
- 2016 Wetland**
- PEM
- PFO
- PSS
- PUB
- 2017 Wetland**
- PEM
- PFO
- PSS
- PUB
- 2018 Wetland**
- PEM
- PFO
- PSS
- PUB

Appendix F
Exhibit F 12-26

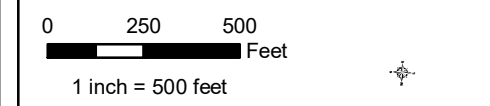
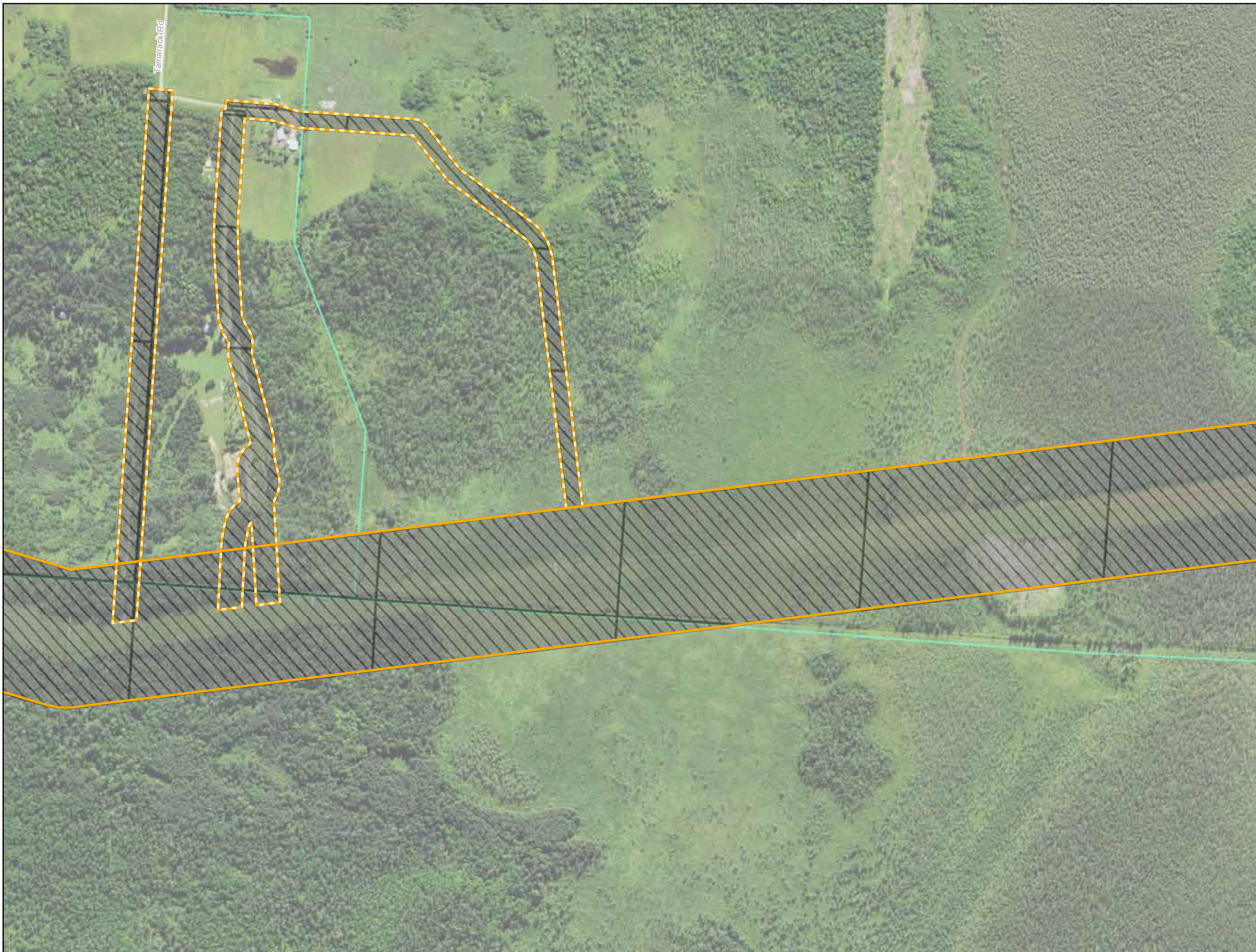
Enbridge

Field Collected Wetlands and Waterbodies

St. Louis County, Minnesota

For Environmental Review Purposes Only September 2018

Date: (9/20/2018) Source: Z:\Clients\IE_F\Enbridge\Line_3_Pull_ReplacementField_Data\Wetland_Waterbody\Reports\Wetland_Waterbody_2018060310M\T13R_Wetland_WB_AppendixF_WIN.mxd



- Environmental Survey Corridor
- Access Road Survey Corridor
- Field Survey Not Complete
- Field Survey Not Required
- National Hydrography Dataset**
- Waterbody
- Intermittent Stream
- Perennial Stream
- Canal/Ditch
- NWI Wetland**
- PEM
- PSS
- L1U
- PFO
- PUB
- R2U; R4S; R5U; R3U
- Field Delineated Features**
- 2013 Sample Point
- 2014 Sample Point
- 2015 Sample Point
- 2016 Sample Point
- 2017 Sample Point
- 2018 Sample Point
- 2013 Field Delineated Waterbody
- 2014 Field Delineated Waterbody
- 2015 Field Delineated Waterbody
- 2016 Field Delineated Waterbody
- 2017 Field Delineated Waterbody
- 2018 Field Delineated Waterbody
- 2013 Wetland**
- PEM
- PFO
- PSS
- PUB
- L1UB
- 2014 Wetland**
- PEM
- PFO
- PSS
- PUB
- 2015 Wetland**
- PEM
- PFO
- PSS
- PUB
- 2016 Wetland**
- PEM
- PFO
- PSS
- PUB
- 2017 Wetland**
- PEM
- PFO
- PSS
- PUB
- 2018 Wetland**
- PEM
- PFO
- PSS
- PUB

**Appendix F
Exhibit F 12-27**

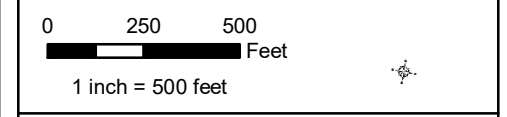
Enbridge

**Field Collected Wetlands and
Waterbodies**

St. Louis County, Minnesota



Source: Z:\Clients\IE_F\Enbridge\Line_3_Pull_ReplacementField_Data\Wetland_Waterbody\Reports\Wetland_Waterbody_20180631\Wetland_Waterbody_20180631\Wetland_Waterbody_20180631\Wetland_Waterbody_20180631\Wetland_Waterbody_20180631.mxd



- Environmental Survey Corridor
- Access Road Survey Corridor
- Field Survey Not Complete
- Field Survey Not Required
- National Hydrography Dataset**
- Waterbody
- Intermittent Stream
- Perennial Stream
- Canal/Ditch
- NWI Wetland**
- PEM
- PFO
- PSS
- PUB
- L1U
- R2U; R4S; R5U; R3U
- Field Delineated Features**
- 2013 Sample Point
- 2014 Sample Point
- 2015 Sample Point
- 2016 Sample Point
- 2017 Sample Point
- 2018 Sample Point
- 2013 Field Delineated Waterbody
- 2014 Field Delineated Waterbody
- 2015 Field Delineated Waterbody
- 2016 Field Delineated Waterbody
- 2017 Field Delineated Waterbody
- 2018 Field Delineated Waterbody
- 2013 Wetland**
- PEM
- PFO
- PSS
- PUB
- L1UB
- 2014 Wetland**
- PEM
- PFO
- PSS
- PUB
- 2015 Wetland**
- PEM
- PFO
- PSS
- PUB
- 2016 Wetland**
- PEM
- PFO
- PSS
- PUB
- 2017 Wetland**
- PEM
- PFO
- PSS
- PUB
- 2018 Wetland**
- PEM
- PFO
- PSS
- PUB

Appendix F
Exhibit F 12-28

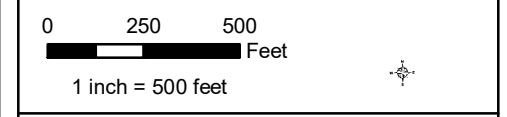
Enbridge

Field Collected Wetlands and Waterbodies

St. Louis County, Minnesota

For Environmental Review Purposes Only September 2018

Source: Z:\Clients\IE_F\Enbridge\Line_3_Pull_ReplacementField_Data\Wetland_Waterbody\Reports\Wetland_Waterbody_20180631\Wetland_Waterbody_20180631\Wetland_Waterbody_20180631\Wetland_Waterbody_20180631.mxd



- Environmental Survey Corridor
- Access Road Survey Corridor
- Field Survey Not Complete
- Field Survey Not Required
- National Hydrography Dataset**
- Waterbody
- Intermittent Stream
- Perennial Stream
- Canal/Ditch
- NWI Wetland**
- PEM
- PSS
- L1U
- PFO
- PUB
- R2U; R4S; R5U; R3U
- Field Delineated Features**
- 2013 Sample Point
- 2014 Sample Point
- 2015 Sample Point
- 2016 Sample Point
- 2017 Sample Point
- 2018 Sample Point
- 2013 Field Delineated Waterbody
- 2014 Field Delineated Waterbody
- 2015 Field Delineated Waterbody
- 2016 Field Delineated Waterbody
- 2017 Field Delineated Waterbody
- 2018 Field Delineated Waterbody
- 2013 Wetland**
- PEM
- PFO
- PSS
- PUB
- L1UB
- 2014 Wetland**
- PEM
- PFO
- PSS
- PUB
- 2015 Wetland**
- PEM
- PFO
- PSS
- PUB
- 2016 Wetland**
- PEM
- PFO
- PSS
- PUB
- 2017 Wetland**
- PEM
- PFO
- PSS
- PUB
- 2018 Wetland**
- PEM
- PFO
- PSS
- PUB

**Appendix F
Exhibit F 12-29**

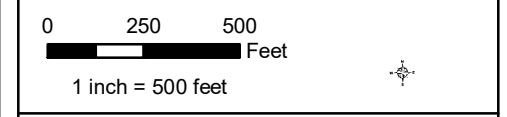
Enbridge

**Field Collected Wetlands and
Waterbodies**

St. Louis County, Minnesota



Source: Z:\Clients\IE_F\Enbridge\Line_3_Pull_ReplacementField_Data\Wetland_Waterbody\Reports\Wetland_Waterbody_20180631\Wetland_Waterbody_20180631\Wetland_Waterbody_20180631.mxd



- Environmental Survey Corridor
- Access Road Survey Corridor
- Field Survey Not Complete
- Field Survey Not Required
- National Hydrography Dataset**
- Waterbody
- Intermittent Stream
- Perennial Stream
- Canal/Ditch
- NWI Wetland**
- PEM
- PSS
- L1U
- PFO
- PUB
- R2U; R4S; R5U; R3U
- Field Delineated Features**
- 2013 Sample Point
- 2014 Sample Point
- 2015 Sample Point
- 2016 Sample Point
- 2017 Sample Point
- 2018 Sample Point
- 2013 Field Delineated Waterbody
- 2014 Field Delineated Waterbody
- 2015 Field Delineated Waterbody
- 2016 Field Delineated Waterbody
- 2017 Field Delineated Waterbody
- 2018 Field Delineated Waterbody
- 2013 Wetland**
- PEM
- PFO
- PSS
- PUB
- L1UB
- 2014 Wetland**
- PEM
- PFO
- PSS
- PUB
- 2015 Wetland**
- PEM
- PFO
- PSS
- PUB
- 2016 Wetland**
- PEM
- PFO
- PSS
- PUB
- 2017 Wetland**
- PEM
- PFO
- PSS
- PUB
- 2018 Wetland**
- PEM
- PFO
- PSS
- PUB

Appendix F
Exhibit F 12-30

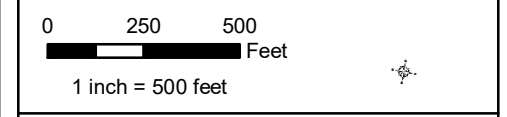
Enbridge

Field Collected Wetlands and Waterbodies

St. Louis County, Minnesota

For Environmental Review Purposes Only September 2018

Date: (9/20/2018) Source: Z:\Clients\IE_F\Enbridge\Line_3_Pull_ReplacementField_Data\Wetland_Waterbody\Reports\Wetland_Waterbody_20180631\Wetland_Waterbody_WB_AppendixF_Min.mxd



- Environmental Survey Corridor
- Access Road Survey Corridor
- Field Survey Not Complete
- Field Survey Not Required
- National Hydrography Dataset**
- Waterbody
- Intermittent Stream
- Perennial Stream
- Canal/Ditch
- NWI Wetland**
- PEM
- PSS
- L1U
- PFO
- PUB
- R2U; R4S; R5U; R3U
- Field Delineated Features**
- 2013 Sample Point
- 2014 Sample Point
- 2015 Sample Point
- 2016 Sample Point
- 2017 Sample Point
- 2018 Sample Point
- 2013 Field Delineated Waterbody
- 2014 Field Delineated Waterbody
- 2015 Field Delineated Waterbody
- 2016 Field Delineated Waterbody
- 2017 Field Delineated Waterbody
- 2018 Field Delineated Waterbody
- 2013 Wetland**
- PEM
- PFO
- PSS
- PUB
- L1UB
- 2014 Wetland**
- PEM
- PFO
- PSS
- PUB
- 2015 Wetland**
- PEM
- PFO
- PSS
- PUB
- 2016 Wetland**
- PEM
- PFO
- PSS
- PUB
- 2017 Wetland**
- PEM
- PFO
- PSS
- PUB
- 2018 Wetland**
- PEM
- PFO
- PSS
- PUB

Appendix F
Exhibit F 12-31

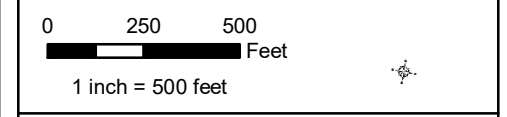
Enbridge

Field Collected Wetlands and Waterbodies

St. Louis County, Minnesota

For Environmental Review Purposes Only September 2018

Date: (9/20/2018) Source: Z:\Clients\IE_F\Enbridge\Line_3_Pull_ReplacementField_Data\Wetland_Waterbody\Reports\Wetland_Waterbody_20180631\Wetland_Waterbody_WB_AppendixF_Min.mxd



- Environmental Survey Corridor
- Access Road Survey Corridor
- Field Survey Not Complete
- Field Survey Not Required
- National Hydrography Dataset**
- Waterbody
- Intermittent Stream
- Perennial Stream
- Canal/Ditch
- NWI Wetland**
- PEM
- PSS
- L1U
- PFO
- PUB
- R2U; R4S; R5U; R3U
- Field Delineated Features**
- 2013 Sample Point
- 2014 Sample Point
- 2015 Sample Point
- 2016 Sample Point
- 2017 Sample Point
- 2018 Sample Point
- 2013 Field Delineated Waterbody
- 2014 Field Delineated Waterbody
- 2015 Field Delineated Waterbody
- 2016 Field Delineated Waterbody
- 2017 Field Delineated Waterbody
- 2018 Field Delineated Waterbody
- 2013 Wetland**
- PEM
- PFO
- PSS
- PUB
- L1UB
- 2014 Wetland**
- PEM
- PFO
- PSS
- PUB
- 2015 Wetland**
- PEM
- PFO
- PSS
- PUB
- 2016 Wetland**
- PEM
- PFO
- PSS
- PUB
- 2017 Wetland**
- PEM
- PFO
- PSS
- PUB
- 2018 Wetland**
- PEM
- PFO
- PSS
- PUB

Appendix F
Exhibit F 12-32

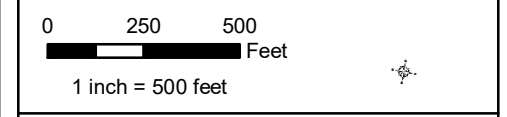
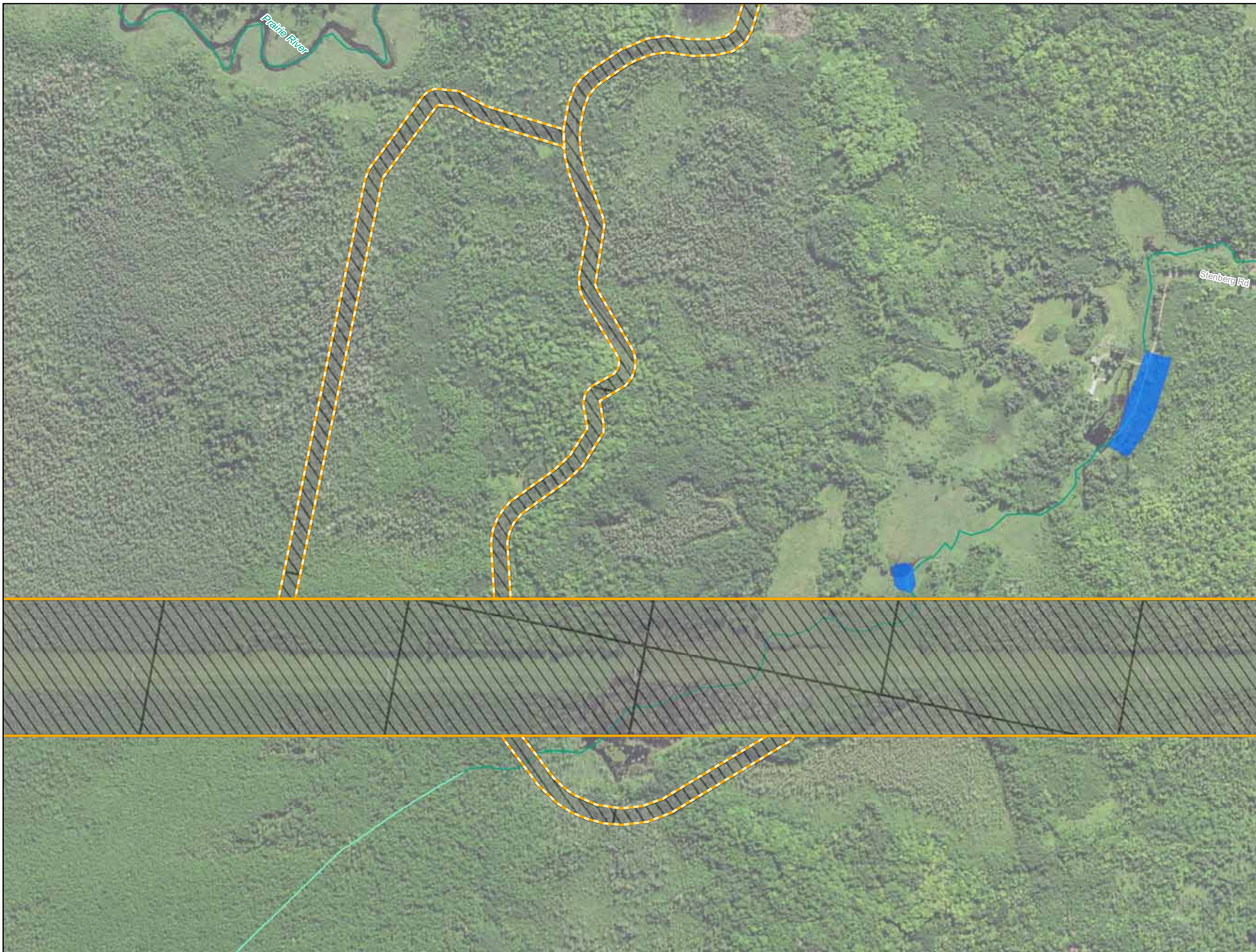
Enbridge

Field Collected Wetlands and Waterbodies

St. Louis County, Minnesota

For Environmental Review Purposes Only September 2018

Date: (9/20/2018) Source: Z:\Clients\IE_F\Enbridge\Line_3_Pull_ReplacementField_Data\Wetland_Waterbody\Reports\Wetland_Waterbody_20180631\Wetland_Waterbody_20180631\Wetland_Waterbody_20180631\Wetland_Waterbody_20180631.mxd




- Environmental Survey Corridor
- Access Road Survey Corridor
- Field Survey Not Complete
- Field Survey Not Required
- National Hydrography Dataset**
- Waterbody
- Intermittent Stream
- Perennial Stream
- Canal/Ditch
- NWI Wetland**
- PEM
- PSS
- L1U
- PFO
- PUB
- R2U; R4S; R5U; R3U
- Field Delineated Features**
- 2013 Sample Point
- 2014 Sample Point
- 2015 Sample Point
- 2016 Sample Point
- 2017 Sample Point
- 2018 Sample Point
- 2013 Field Delineated Waterbody
- 2014 Field Delineated Waterbody
- 2015 Field Delineated Waterbody
- 2016 Field Delineated Waterbody
- 2017 Field Delineated Waterbody
- 2018 Field Delineated Waterbody
- 2013 Wetland**
- PEM
- PFO
- PSS
- PUB
- L1UB
- 2014 Wetland**
- PEM
- PFO
- PSS
- PUB
- 2015 Wetland**
- PEM
- PFO
- PSS
- PUB
- 2016 Wetland**
- PEM
- PFO
- PSS
- PUB
- 2017 Wetland**
- PEM
- PFO
- PSS
- PUB
- 2018 Wetland**
- PEM
- PFO
- PSS
- PUB

Appendix F
Exhibit F 12-33

Enbridge

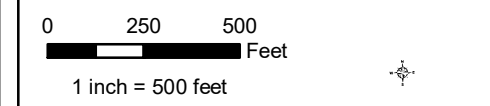
Field Collected Wetlands and Waterbodies

St. Louis County, Minnesota



For Environmental Review Purposes Only September 2018

Source: Z:\Clients\IE_F\IE\bridge\Line_3_Full_Replacement\Field_Data\Wetland\Waterbody\Reports\Wetland_Waterbody_20180631\Wetland_Waterbody_20180631\Wetland_Waterbody_20180631\Wetland_Waterbody_20180631\Wetland_Waterbody_20180631.mxd



- Environmental Survey Corridor
- Access Road Survey Corridor
- Field Survey Not Complete
- Field Survey Not Required
- National Hydrography Dataset**
- Waterbody
- Intermittent Stream
- Perennial Stream
- Canal/Ditch
- NWI Wetland**
- PEM
- PFO
- PSS
- PUB
- L1U
- R2U; R4S; R5U; R3U
- Field Delineated Features**
- 2013 Sample Point
- 2014 Sample Point
- 2015 Sample Point
- 2016 Sample Point
- 2017 Sample Point
- 2018 Sample Point
- 2013 Field Delineated Waterbody
- 2014 Field Delineated Waterbody
- 2015 Field Delineated Waterbody
- 2016 Field Delineated Waterbody
- 2017 Field Delineated Waterbody
- 2018 Field Delineated Waterbody
- 2013 Wetland**
- PEM
- PFO
- PSS
- PUB
- L1UB
- 2014 Wetland**
- PEM
- PFO
- PSS
- PUB
- 2015 Wetland**
- PEM
- PFO
- PSS
- PUB
- 2016 Wetland**
- PEM
- PFO
- PSS
- PUB
- 2017 Wetland**
- PEM
- PFO
- PSS
- PUB
- 2018 Wetland**
- PEM
- PFO
- PSS
- PUB

Appendix F
Exhibit F 12-34

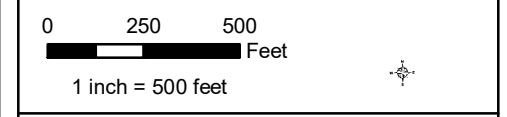
Enbridge

Field Collected Wetlands and Waterbodies

St. Louis County, Minnesota

For Environmental Review Purposes Only September 2018

Source: Z:\Clients\IE_F\IE\bridge\Line_3_Pull_ReplacementField_Data\Wetland_Field_Data\Wetland_Waterbody\Reports\Wetland_Waterbody_20180631\Wetland_Waterbody_WB_AppendixF_Min.mxd



- Environmental Survey Corridor
- Access Road Survey Corridor
- Field Survey Not Complete
- Field Survey Not Required
- National Hydrography Dataset**
- Waterbody
- Intermittent Stream
- Perennial Stream
- Canal/Ditch
- NWI Wetland**
- PEM
- PFO
- PSS
- PUB
- L1U
- R2U; R4S; R5U; R3U
- Field Delineated Features**
- 2013 Sample Point
- 2014 Sample Point
- 2015 Sample Point
- 2016 Sample Point
- 2017 Sample Point
- 2018 Sample Point
- 2013 Field Delineated Waterbody
- 2014 Field Delineated Waterbody
- 2015 Field Delineated Waterbody
- 2016 Field Delineated Waterbody
- 2017 Field Delineated Waterbody
- 2018 Field Delineated Waterbody
- 2013 Wetland**
- PEM
- PFO
- PSS
- PUB
- L1UB
- 2014 Wetland**
- PEM
- PFO
- PSS
- PUB
- 2015 Wetland**
- PEM
- PFO
- PSS
- PUB
- 2016 Wetland**
- PEM
- PFO
- PSS
- PUB
- 2017 Wetland**
- PEM
- PFO
- PSS
- PUB
- 2018 Wetland**
- PEM
- PFO
- PSS
- PUB

Appendix F
Exhibit F 12-36

Enbridge

Field Collected Wetlands and Waterbodies

St. Louis County, Minnesota

For Environmental Review Purposes Only September 2018

Source: Z:\Clients\IE_F\IE\bridge\Line_3_Pull_ReplacementField_Data\Wetland_Waterbody\Reports\Wetland_Waterbody_20180631\Wetland_Waterbody_WB_AppendixF_Wetland_WB.mxd