

- Environmental Survey Corridor
- Access Road Survey Corridor
- Field Survey Not Complete
- Field Survey Not Required
- National Hydrography Dataset**
- Waterbody
- Intermittent Stream
- Perennial Stream
- Canal/Ditch
- NWI Wetland**
- PEM
- PFO
- PSS
- PUB
- L1U
- R2U; R4S; R5U; R3U
- Field Delineated Features**
- 2013 Sample Point
- 2014 Sample Point
- 2015 Sample Point
- 2016 Sample Point
- 2017 Sample Point
- 2018 Sample Point
- 2013 Field Delineated Waterbody
- 2014 Field Delineated Waterbody
- 2015 Field Delineated Waterbody
- 2016 Field Delineated Waterbody
- 2017 Field Delineated Waterbody
- 2018 Field Delineated Waterbody
- 2013 Wetland**
- PEM
- PFO
- PSS
- PUB
- L1UB
- 2014 Wetland**
- PEM
- PFO
- PSS
- PUB
- 2015 Wetland**
- PEM
- PFO
- PSS
- PUB
- 2016 Wetland**
- PEM
- PFO
- PSS
- PUB
- 2017 Wetland**
- PEM
- PFO
- PSS
- PUB
- 2018 Wetland**
- PEM
- PFO
- PSS
- PUB

Appendix F
Exhibit F 10-1

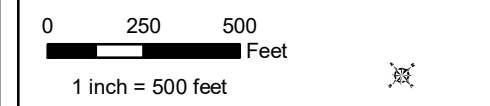
Enbridge

Field Collected Wetlands and Waterbodies

Crow Wing County, Minnesota

For Environmental Review Purposes Only September 2018

Date: (9/15/2018) Source: Z:\Clients\IE_F\Enbridge\Line_3_Pull_ReplacementField_Data\Wetland_Waterbody\Reports\Wetland_Waterbody_2018060310M\T13\CR_Wetland_WB_AppendixF_WIN.mxd



- Environmental Survey Corridor
- Access Road Survey Corridor
- Field Survey Not Complete
- Field Survey Not Required
- National Hydrography Dataset**
- Waterbody
- Intermittent Stream
- Perennial Stream
- Canal/Ditch
- NWI Wetland**
- PEM
- PFO
- PSS
- PUB
- L1U
- R2U; R4S; R5U; R3U
- Field Delineated Features**
- 2013 Sample Point
- 2014 Sample Point
- 2015 Sample Point
- 2016 Sample Point
- 2017 Sample Point
- 2018 Sample Point
- 2013 Field Delineated Waterbody
- 2014 Field Delineated Waterbody
- 2015 Field Delineated Waterbody
- 2016 Field Delineated Waterbody
- 2017 Field Delineated Waterbody
- 2018 Field Delineated Waterbody
- 2013 Wetland**
- PEM
- PFO
- PSS
- PUB
- L1UB
- 2014 Wetland**
- PEM
- PFO
- PSS
- PUB
- 2015 Wetland**
- PEM
- PFO
- PSS
- PUB
- 2016 Wetland**
- PEM
- PFO
- PSS
- PUB
- 2017 Wetland**
- PEM
- PFO
- PSS
- PUB
- 2018 Wetland**
- PEM
- PFO
- PSS
- PUB

Appendix F
Exhibit F 10-3

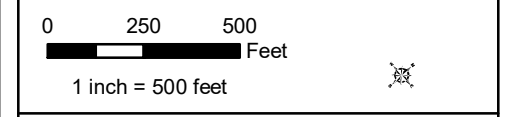
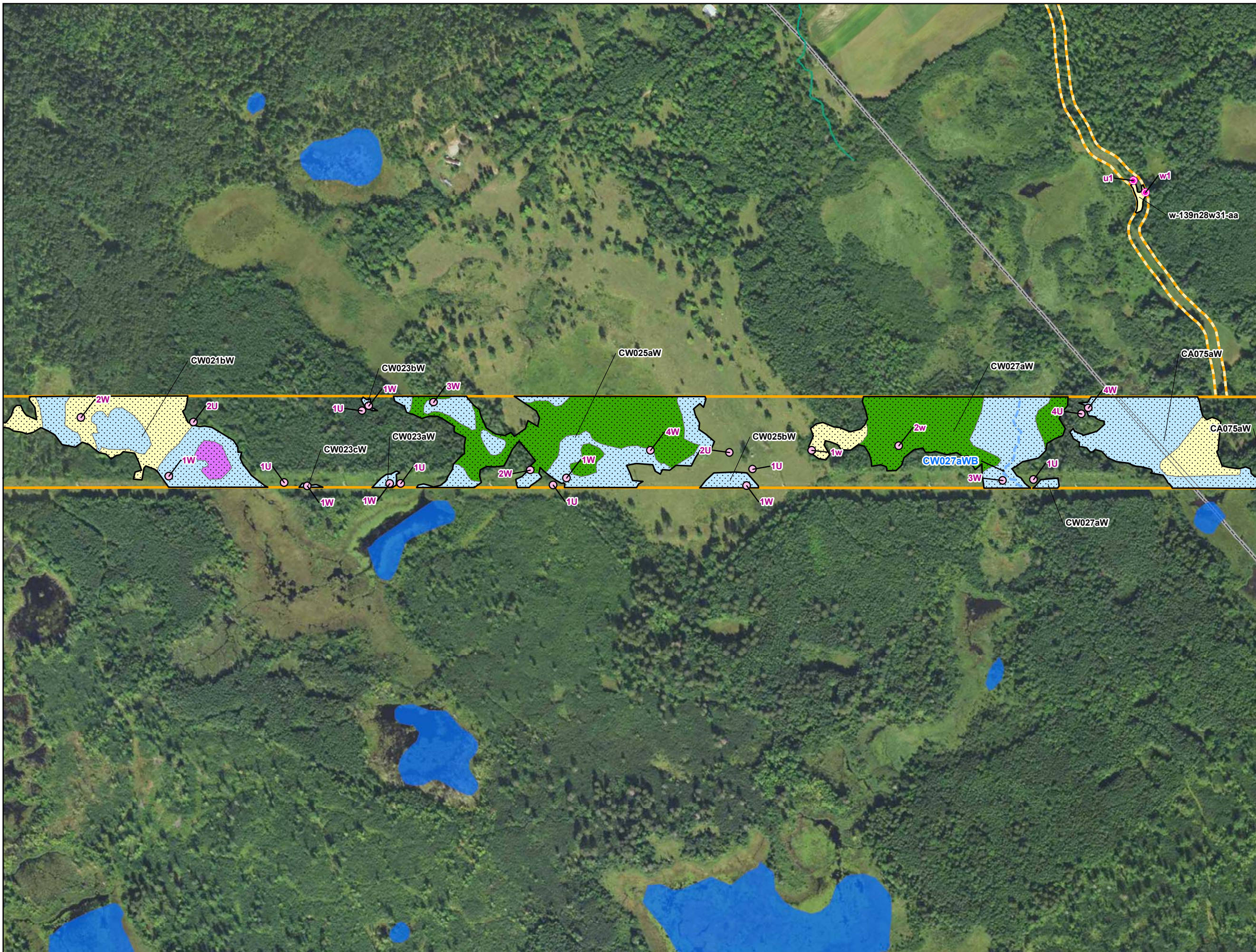
Enbridge

Field Collected Wetlands and Waterbodies

Crow Wing County, Minnesota

For Environmental Review Purposes Only September 2018

Date: (9/15/2018) Source: Z:\Clients\ENBRIDGE\Projects\Wetland\Waterbody\Reports\Wetland_Waterbody\Reports\Wetland_Waterbody_20180915\Wetland_Waterbody_20180915.mxd



- Environmental Survey Corridor
- Access Road Survey Corridor
- Field Survey Not Complete
- Field Survey Not Required
- National Hydrography Dataset**
- Waterbody
- Intermittent Stream
- Perennial Stream
- Canal/Ditch
- NWI Wetland**
- PEM
- PFO
- PSS
- PUB
- L1U
- R2U; R4S; R5U; R3U
- Field Delineated Features**
- 2013 Sample Point
- 2014 Sample Point
- 2015 Sample Point
- 2016 Sample Point
- 2017 Sample Point
- 2018 Sample Point
- 2013 Field Delineated Waterbody
- 2014 Field Delineated Waterbody
- 2015 Field Delineated Waterbody
- 2016 Field Delineated Waterbody
- 2017 Field Delineated Waterbody
- 2018 Field Delineated Waterbody
- 2013 Wetland**
- PEM
- PFO
- PSS
- PUB
- L1UB
- 2014 Wetland**
- PEM
- PFO
- PSS
- PUB
- 2015 Wetland**
- PEM
- PFO
- PSS
- PUB
- 2016 Wetland**
- PEM
- PFO
- PSS
- PUB
- 2017 Wetland**
- PEM
- PFO
- PSS
- PUB
- 2018 Wetland**
- PEM
- PFO
- PSS
- PUB

**Appendix F
Exhibit F 10-4**

Enbridge

**Field Collected Wetlands and
Waterbodies**

Crow Wing County, Minnesota



Date: (9/15/2018) Source: Z:\Clients\IE_F\Enbridge\Line_3_Full_ReplacementField_Data\Wetland_Waterbody\Reports\Wetland_Waterbody_20180631\Wetland_Waterbody_AppendixF_Wetland_Waterbody.mxd