

- Environmental Survey Corridor
- Access Road Survey Corridor
- Field Survey Not Complete
- Field Survey Not Required
- National Hydrography Dataset**
- Waterbody
- Intermittent Stream
- Perennial Stream
- Canal/Ditch
- NWI Wetland**
- PEM
- PFO
- PSS
- PUB
- L1U
- R2U; R4S; R5U; R3U
- Field Delineated Features**
- 2013 Sample Point
- 2014 Sample Point
- 2015 Sample Point
- 2016 Sample Point
- 2017 Sample Point
- 2018 Sample Point
- 2013 Field Delineated Waterbody
- 2014 Field Delineated Waterbody
- 2015 Field Delineated Waterbody
- 2016 Field Delineated Waterbody
- 2017 Field Delineated Waterbody
- 2018 Field Delineated Waterbody
- 2013 Wetland**
- PEM
- PFO
- PSS
- PUB
- L1UB
- 2014 Wetland**
- PEM
- PFO
- PSS
- PUB
- 2015 Wetland**
- PEM
- PFO
- PSS
- PUB
- 2016 Wetland**
- PEM
- PFO
- PSS
- PUB
- 2017 Wetland**
- PEM
- PFO
- PSS
- PUB
- 2018 Wetland**
- PEM
- PFO
- PSS
- PUB

**Appendix F
Exhibit F 4-1**

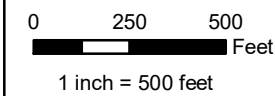
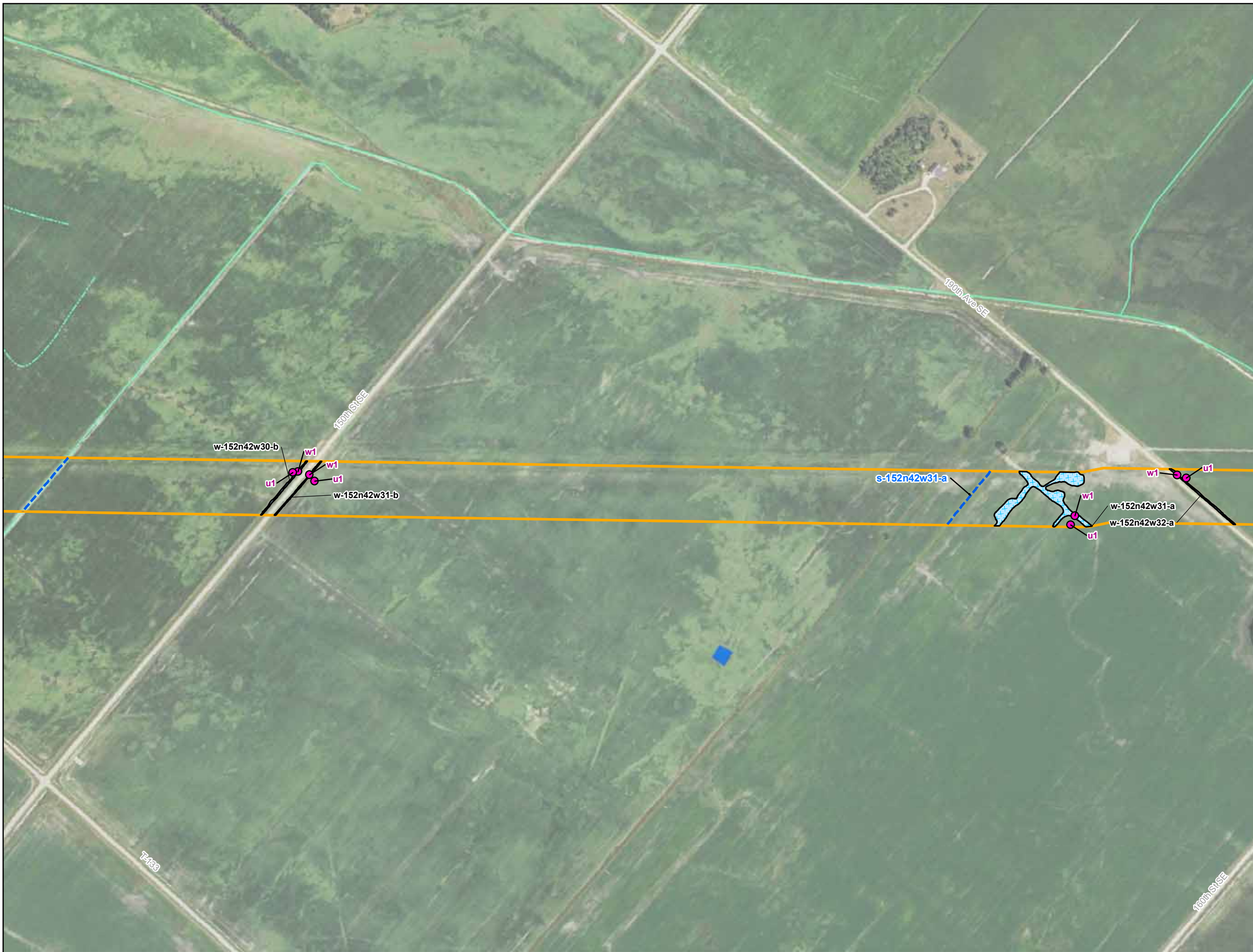
Enbridge

**Field Collected Wetlands and
Waterbodies**

Red Lake County, Minnesota



Source: Z:\Clients\IE_F\Enbridge\Line_3_Pull_ReplacementField_Data\Wetland_Waterbody\Reports\Wetland_Waterbody_20180631\Wetland_Waterbody_WB_AppendixF_MN - Copy.mxd



- Environmental Survey Corridor
- Access Road Survey Corridor
- Field Survey Not Complete
- Field Survey Not Required
- National Hydrography Dataset**
- Waterbody
- Intermittent Stream
- Perennial Stream
- Canal/Ditch

- NWI Wetland**
- PEM
- PFO
- PSS
- PUB
- L1U
- R2U; R4S; R5U; R3U

- Field Delineated Features**
- 2013 Sample Point
- 2014 Sample Point
- 2015 Sample Point
- 2016 Sample Point
- 2017 Sample Point
- 2018 Sample Point
- 2013 Field Delineated Waterbody
- 2014 Field Delineated Waterbody
- 2015 Field Delineated Waterbody
- 2016 Field Delineated Waterbody
- 2017 Field Delineated Waterbody
- 2018 Field Delineated Waterbody

- 2013 Wetland**
- PEM
- PFO
- PSS
- PUB
- L1UB
- 2014 Wetland**
- PEM
- PFO
- PSS
- PUB
- 2015 Wetland**
- PEM
- PFO
- PSS
- PUB
- 2016 Wetland**
- PEM
- PFO
- PSS
- PUB
- 2017 Wetland**
- PEM
- PFO
- PSS
- PUB
- 2018 Wetland**
- PEM
- PFO
- PSS
- PUB

Appendix F Exhibit F 4-2

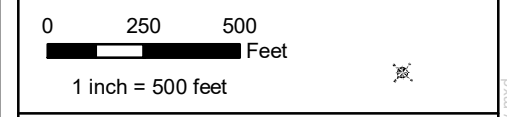
Enbridge

**Field Collected Wetlands and
Waterbodies**

Red Lake County, Minnesota



Source: Z:\Clients\IE_F\Enbridge\Line_3_Pull_ReplacementField_Data\Wetland_Waterbody\Reports\Wetland_Waterbody_20180631\MN\T3LR_Wetland_WB_Appendixr_MN - Copy.mxd



- Environmental Survey Corridor
- Access Road Survey Corridor
- Field Survey Not Complete
- Field Survey Not Required
- National Hydrography Dataset**
- Waterbody
- Intermittent Stream
- Perennial Stream
- Canal/Ditch
- NWI Wetland**
- PEM
- PSS
- L1U
- PFO
- PUB
- R2U; R4S; R5U; R3U
- Field Delineated Features**
- 2013 Sample Point
- 2014 Sample Point
- 2015 Sample Point
- 2016 Sample Point
- 2017 Sample Point
- 2018 Sample Point
- 2013 Field Delineated Waterbody
- 2014 Field Delineated Waterbody
- 2015 Field Delineated Waterbody
- 2016 Field Delineated Waterbody
- 2017 Field Delineated Waterbody
- 2018 Field Delineated Waterbody
- 2013 Wetland**
- PEM
- PFO
- PSS
- PUB
- L1UB
- 2014 Wetland**
- PEM
- PFO
- PSS
- PUB
- 2015 Wetland**
- PEM
- PFO
- PSS
- PUB
- 2016 Wetland**
- PEM
- PFO
- PSS
- PUB
- 2017 Wetland**
- PEM
- PFO
- PSS
- PUB
- 2018 Wetland**
- PEM
- PFO
- PSS
- PUB

**Appendix F
Exhibit F 4-3**

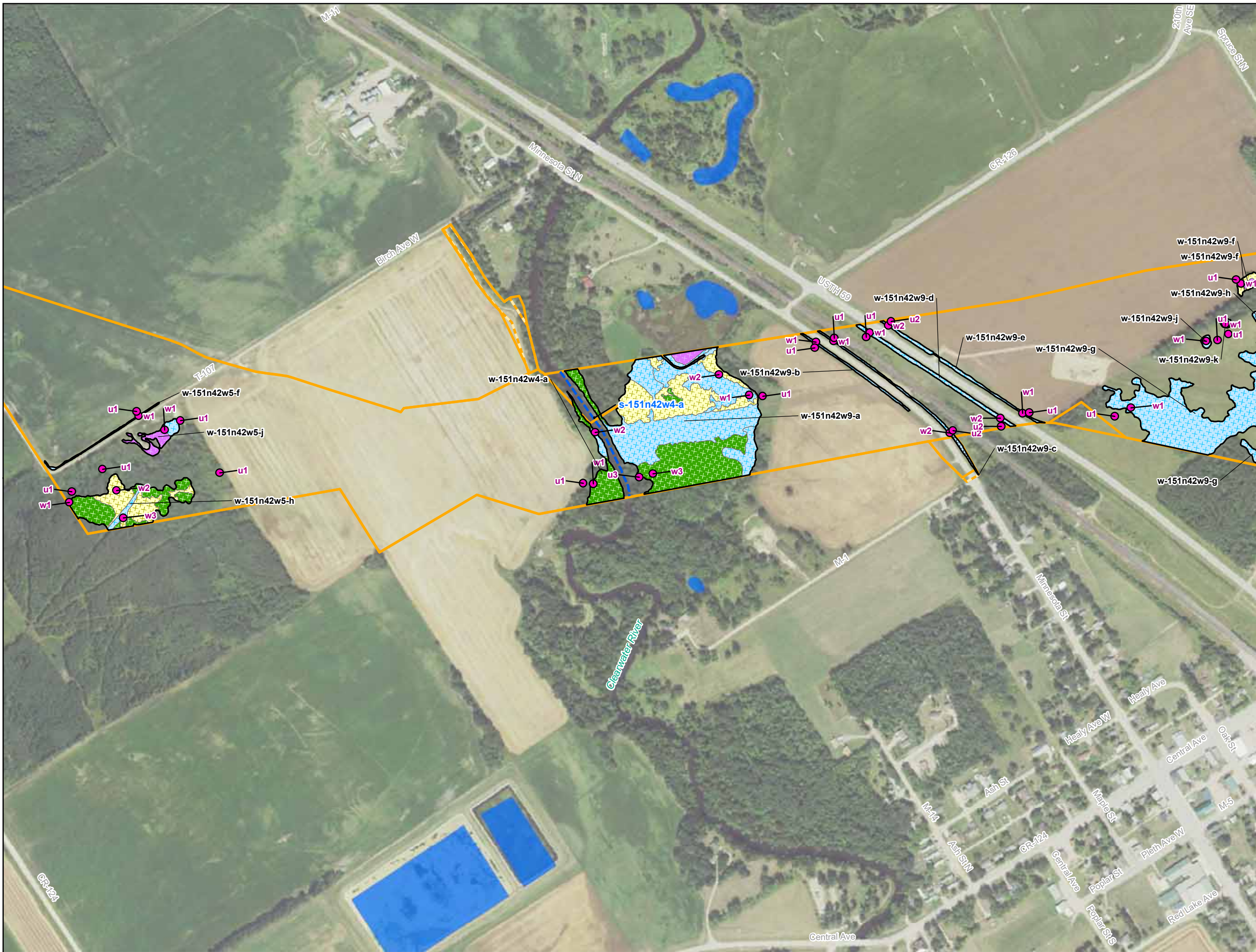
Enbridge

Field Collected Wetlands and Waterbodies

Red Lake County, Minnesota



Source: Z:\Clients\IE_F\Enbridge\Line_3_Pull_ReplacementField_Data\Wetland_Waterbody\Reports\Wetland_Waterbody_20180631\Wetland_Waterbody_WB_AppendixF_MN - Copy.mxd



- Environmental Survey Corridor
- Access Road Survey Corridor
- Field Survey Not Complete
- Field Survey Not Required
- National Hydrography Dataset**
- Waterbody
- Intermittent Stream
- Perennial Stream
- Canal/Ditch
- NWI Wetland**
- PEM
- PFO
- PSS
- PUB
- L1U
- R2U; R4S; R5U; R3U
- Field Delineated Features**
- 2013 Sample Point
- 2014 Sample Point
- 2015 Sample Point
- 2016 Sample Point
- 2017 Sample Point
- 2018 Sample Point
- 2013 Field Delineated Waterbody
- 2014 Field Delineated Waterbody
- 2015 Field Delineated Waterbody
- 2016 Field Delineated Waterbody
- 2017 Field Delineated Waterbody
- 2018 Field Delineated Waterbody
- 2013 Wetland**
- PEM
- PFO
- PSS
- PUB
- L1UB
- 2014 Wetland**
- PEM
- PFO
- PSS
- PUB
- 2015 Wetland**
- PEM
- PFO
- PSS
- PUB
- 2016 Wetland**
- PEM
- PFO
- PSS
- PUB
- 2017 Wetland**
- PEM
- PFO
- PSS
- PUB
- 2018 Wetland**
- PEM
- PFO
- PSS
- PUB

**Appendix F
Exhibit F 4-4**

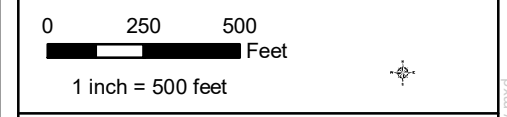
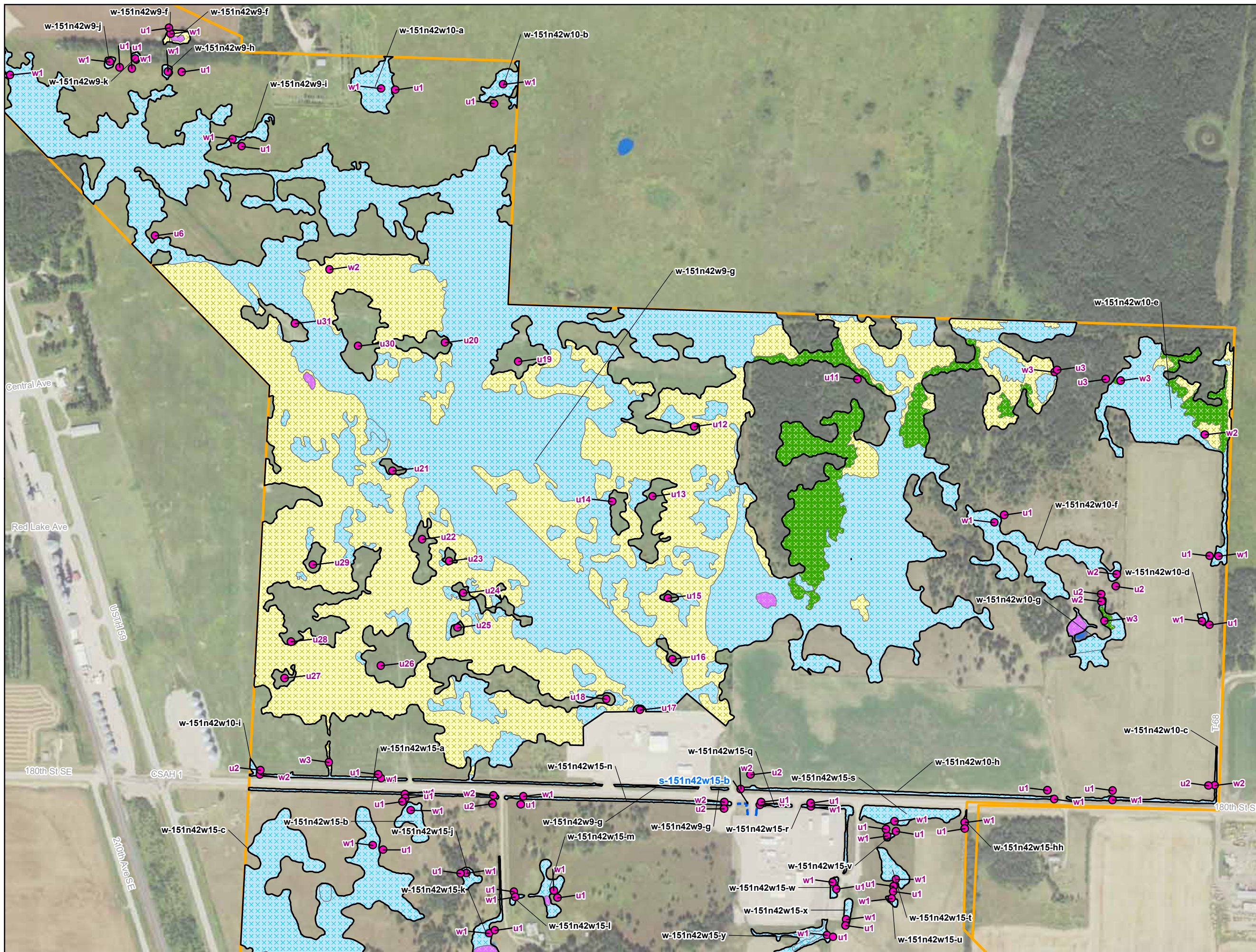
Enbridge

**Field Collected Wetlands and
Waterbodies**

Red Lake County, Minnesota



Source: Z:\Clients\IE_F\ENbridge\Line_3_Pull_ReplacementField_Data\Wetland_Waterbody\Reports\Wetland_Waterbody_20180631\Wetland_Waterbody_WB_AppendixF_MN - Copy.mxd



- Environmental Survey Corridor
- Access Road Survey Corridor
- Field Survey Not Complete
- Field Survey Not Required
- National Hydrography Dataset**
- Waterbody
- Intermittent Stream
- Perennial Stream
- Canal/Ditch
- NWI Wetland**
- PEM
- PFO
- PSS
- PUB
- L1U
- R2U; R4S; R5U; R3U
- Field Delineated Features**
- 2013 Sample Point
- 2014 Sample Point
- 2015 Sample Point
- 2016 Sample Point
- 2017 Sample Point
- 2018 Sample Point
- 2013 Field Delineated Waterbody
- 2014 Field Delineated Waterbody
- 2015 Field Delineated Waterbody
- 2016 Field Delineated Waterbody
- 2017 Field Delineated Waterbody
- 2018 Field Delineated Waterbody
- 2013 Wetland**
- PEM
- PFO
- PSS
- PUB
- L1UB
- 2014 Wetland**
- PEM
- PFO
- PSS
- PUB
- 2015 Wetland**
- PEM
- PFO
- PSS
- PUB
- 2016 Wetland**
- PEM
- PFO
- PSS
- PUB
- 2017 Wetland**
- PEM
- PFO
- PSS
- PUB
- 2018 Wetland**
- PEM
- PFO
- PSS
- PUB

Appendix F
Exhibit F 4-5

Enbridge

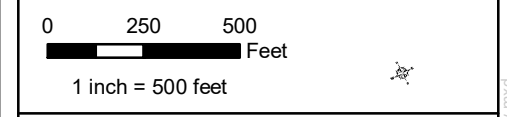
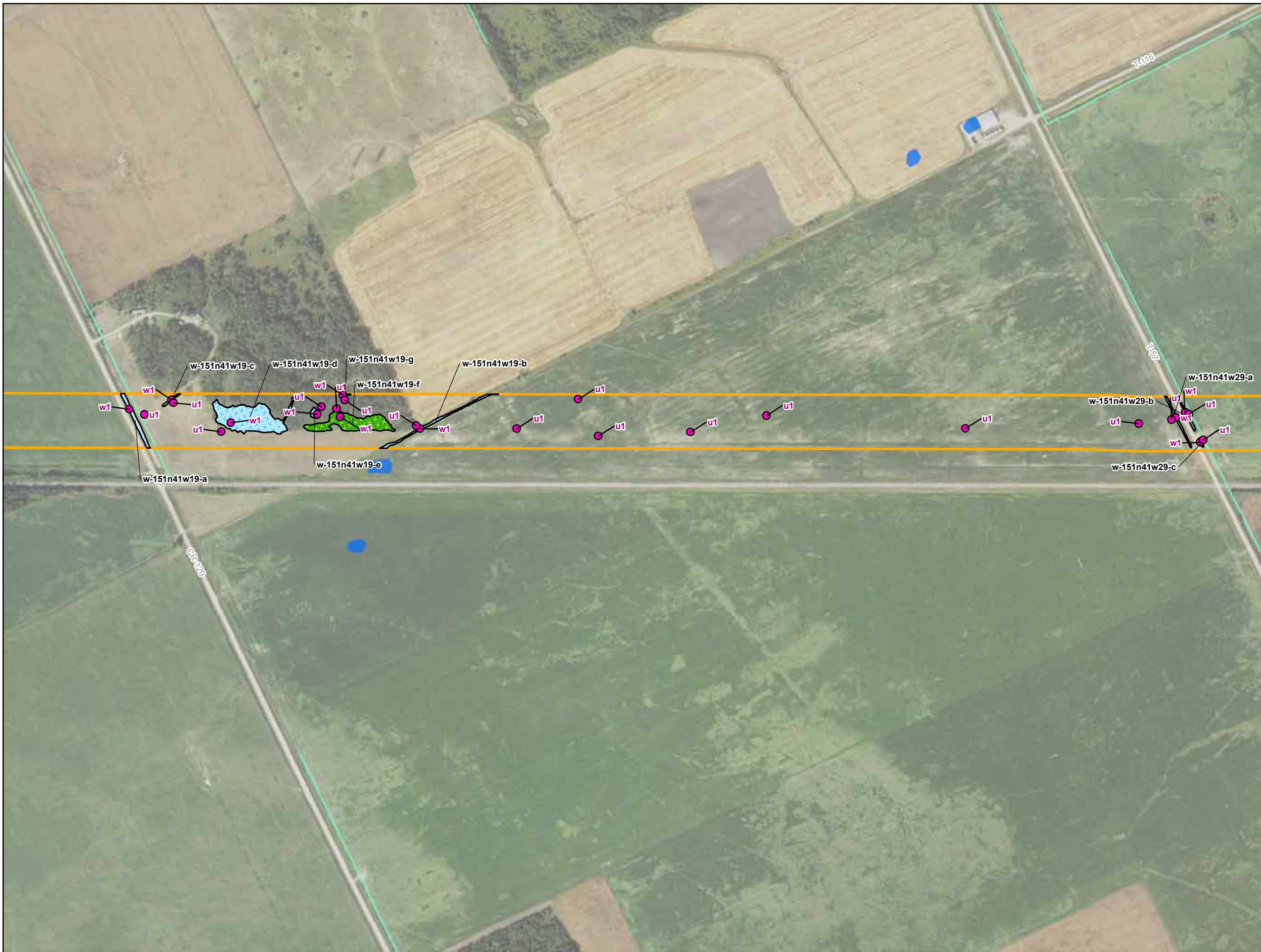
Field Collected Wetlands and Waterbodies

Red Lake County, Minnesota



For Environmental Review Purposes Only September 2018

Date: (9/20/2018) Source: Z:\Clients\IE_FHE\bridge\Line_3_Pull_ReplacementField_Data\Wetland_Waterbody\Wetland_Waterbody_20180631\Wetland_Waterbody_WB_AppendixF_MN - Copy.mxd



- Environmental Survey Corridor
- Access Road Survey Corridor
- Field Survey Not Complete
- Field Survey Not Required
- National Hydrography Dataset**
- Waterbody
- Intermittent Stream
- Perennial Stream
- Canal/Ditch
- NWI Wetland**
- PEM
- PFO
- PSS
- PUB
- L1U
- R2U; R4S; R5U; R3U
- Field Delineated Features**
- 2013 Sample Point
- 2014 Sample Point
- 2015 Sample Point
- 2016 Sample Point
- 2017 Sample Point
- 2018 Sample Point
- 2013 Field Delineated Waterbody
- 2014 Field Delineated Waterbody
- 2015 Field Delineated Waterbody
- 2016 Field Delineated Waterbody
- 2017 Field Delineated Waterbody
- 2018 Field Delineated Waterbody
- 2013 Wetland**
- PEM
- PFO
- PSS
- PUB
- L1UB
- 2014 Wetland**
- PEM
- PFO
- PSS
- PUB
- 2015 Wetland**
- PEM
- PFO
- PSS
- PUB
- 2016 Wetland**
- PEM
- PFO
- PSS
- PUB
- 2017 Wetland**
- PEM
- PFO
- PSS
- PUB
- 2018 Wetland**
- PEM
- PFO
- PSS
- PUB

**Appendix F
Exhibit F 4-9**

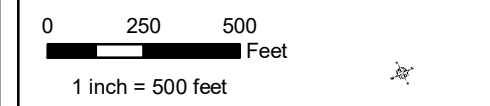
Enbridge

**Field Collected Wetlands and
Waterbodies**

Red Lake County, Minnesota



Date: (9/20/2018) Source: Z:\Clients\IE_F\Enbridge\Line_3_Pull_ReplacementField_Data\Wetland\Waterbody\Reports\Wetland_Waterbody\Wetland_WB_AppendixF_MN - Copy.mxd



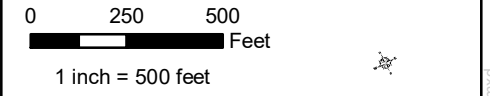
- Environmental Survey Corridor
- Access Road Survey Corridor
- Field Survey Not Complete
- Field Survey Not Required
- National Hydrography Dataset**
- Waterbody
- Intermittent Stream
- Perennial Stream
- Canal/Ditch
- NWI Wetland**
- PEM
- PFO
- PSS
- PUB
- L1U
- R2U; R4S; R5U; R3U
- Field Delineated Features**
- 2013 Sample Point
- 2014 Sample Point
- 2015 Sample Point
- 2016 Sample Point
- 2017 Sample Point
- 2018 Sample Point
- 2013 Field Delineated Waterbody
- 2014 Field Delineated Waterbody
- 2015 Field Delineated Waterbody
- 2016 Field Delineated Waterbody
- 2017 Field Delineated Waterbody
- 2018 Field Delineated Waterbody
- 2013 Wetland**
- PEM
- PFO
- PSS
- PUB
- L1UB
- 2014 Wetland**
- PEM
- PFO
- PSS
- PUB
- 2015 Wetland**
- PEM
- PFO
- PSS
- PUB
- 2016 Wetland**
- PEM
- PFO
- PSS
- PUB
- 2017 Wetland**
- PEM
- PFO
- PSS
- PUB
- 2018 Wetland**
- PEM
- PFO
- PSS
- PUB

**Appendix F
Exhibit F 4-10**

Enbridge
Field Collected Wetlands and Waterbodies
Red Lake County, Minnesota



Date: (9/20/2018) Source: Z:\Clients\IE_F\Enbridge\Line_3_Full_Replacement\Field_Data\Wetland_Waterbody\Reports\Wetland_Waterbody_20180631\Wetland_Waterbody_WB_Appendixr_MN - Copy.mxd



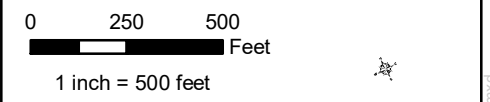
- Environmental Survey Corridor
- Access Road Survey Corridor
- Field Survey Not Complete
- Field Survey Not Required
- National Hydrography Dataset**
- Waterbody
- Intermittent Stream
- Perennial Stream
- Canal/Ditch
- NWI Wetland**
- PEM
- PSS
- L1U
- PFO
- PUB
- R2U; R4S; R5U; R3U
- Field Delineated Features**
- 2013 Sample Point
- 2014 Sample Point
- 2015 Sample Point
- 2016 Sample Point
- 2017 Sample Point
- 2018 Sample Point
- 2013 Field Delineated Waterbody
- 2014 Field Delineated Waterbody
- 2015 Field Delineated Waterbody
- 2016 Field Delineated Waterbody
- 2017 Field Delineated Waterbody
- 2018 Field Delineated Waterbody
- 2013 Wetland**
- PEM
- PFO
- PSS
- PUB
- L1UB
- 2014 Wetland**
- PEM
- PFO
- PSS
- PUB
- 2015 Wetland**
- PEM
- PFO
- PSS
- PUB
- 2016 Wetland**
- PEM
- PFO
- PSS
- PUB
- 2017 Wetland**
- PEM
- PFO
- PSS
- PUB
- 2018 Wetland**
- PEM
- PFO
- PSS
- PUB

**Appendix F
Exhibit F 4-11**

Enbridge
**Field Collected Wetlands and
Waterbodies**
Red Lake County, Minnesota



Date: (9/20/2018) Source: Z:\Clients\IE_FHE\bridge\Line_3_Pull_ReplacementField_Data\Wetland_Waterbody\Reports\Wetland_Waterbody_20180631\Wetland_Waterbody_WB_AppendixF_MN - Copy.mxd



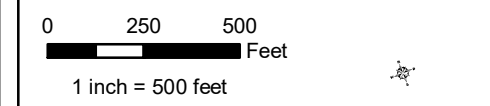
- Environmental Survey Corridor
- Access Road Survey Corridor
- Field Survey Not Complete
- Field Survey Not Required
- National Hydrography Dataset**
- Waterbody
- Intermittent Stream
- Perennial Stream
- Canal/Ditch
- NWI Wetland**
- PEM
- PSS
- L1U
- PFO
- PUB
- R2U; R4S; R5U; R3U
- Field Delineated Features**
- 2013 Sample Point
- 2014 Sample Point
- 2015 Sample Point
- 2016 Sample Point
- 2017 Sample Point
- 2018 Sample Point
- 2013 Field Delineated Waterbody
- 2014 Field Delineated Waterbody
- 2015 Field Delineated Waterbody
- 2016 Field Delineated Waterbody
- 2017 Field Delineated Waterbody
- 2018 Field Delineated Waterbody
- 2013 Wetland**
- PEM
- PFO
- PSS
- PUB
- L1UB
- 2014 Wetland**
- PEM
- PFO
- PSS
- PUB
- 2015 Wetland**
- PEM
- PFO
- PSS
- PUB
- 2016 Wetland**
- PEM
- PFO
- PSS
- PUB
- 2017 Wetland**
- PEM
- PFO
- PSS
- PUB
- 2018 Wetland**
- PEM
- PFO
- PSS
- PUB

**Appendix F
Exhibit F 4-12**

Enbridge
**Field Collected Wetlands and
Waterbodies**
Red Lake County, Minnesota



Date: (9/20/2018) Source: Z:\Clients\IE_FHE\bridge\Line_3_Pull_ReplacementField_Data\Wetland_Waterbody\Reports\Wetland_Waterbody_20180631\Wetland_Waterbody_WB_AppendixF_Min - Copy.mxd



- Environmental Survey Corridor
- Access Road Survey Corridor
- Field Survey Not Complete
- Field Survey Not Required
- National Hydrography Dataset**
- Waterbody
- Intermittent Stream
- Perennial Stream
- Canal/Ditch
- NWI Wetland**
- PEM
- PFO
- PSS
- PUB
- L1U
- R2U; R4S; R5U; R3U
- Field Delineated Features**
- 2013 Sample Point
- 2014 Sample Point
- 2015 Sample Point
- 2016 Sample Point
- 2017 Sample Point
- 2018 Sample Point
- 2013 Field Delineated Waterbody
- 2014 Field Delineated Waterbody
- 2015 Field Delineated Waterbody
- 2016 Field Delineated Waterbody
- 2017 Field Delineated Waterbody
- 2018 Field Delineated Waterbody
- 2013 Wetland**
- PEM
- PFO
- PSS
- PUB
- L1UB
- 2014 Wetland**
- PEM
- PFO
- PSS
- PUB
- 2015 Wetland**
- PEM
- PFO
- PSS
- PUB
- 2016 Wetland**
- PEM
- PFO
- PSS
- PUB
- 2017 Wetland**
- PEM
- PFO
- PSS
- PUB
- 2018 Wetland**
- PEM
- PFO
- PSS
- PUB

Appendix F
Exhibit F 4-13

Enbridge

Field Collected Wetlands and Waterbodies

Red Lake County, Minnesota

For Environmental Review Purposes Only September 2018

Date: (9/20/2018) Source: Z:\Clients\IE_F\IE\bridge\Line_3_Pull_ReplacementField_Data\Wetland_Waterbody\Reports\Wetland_Waterbody_20180631\MMT\CSA\Wetland_WB_Appendixr_MIN - Copy.mxd



- Environmental Survey Corridor
- Access Road Survey Corridor
- Field Survey Not Complete
- Field Survey Not Required
- National Hydrography Dataset**
- Waterbody
- Intermittent Stream
- Perennial Stream
- Canal/Ditch
- NWI Wetland**
- PEM
- PSS
- L1U
- PFO
- PUB
- R2U; R4S; R5U; R3U
- Field Delineated Features**
- 2013 Sample Point
- 2014 Sample Point
- 2015 Sample Point
- 2016 Sample Point
- 2017 Sample Point
- 2018 Sample Point
- 2013 Field Delineated Waterbody
- 2014 Field Delineated Waterbody
- 2015 Field Delineated Waterbody
- 2016 Field Delineated Waterbody
- 2017 Field Delineated Waterbody
- 2018 Field Delineated Waterbody
- 2013 Wetland**
- PEM
- PFO
- PSS
- PUB
- L1UB
- 2014 Wetland**
- PEM
- PFO
- PSS
- PUB
- 2015 Wetland**
- PEM
- PFO
- PSS
- PUB
- 2016 Wetland**
- PEM
- PFO
- PSS
- PUB
- 2017 Wetland**
- PEM
- PFO
- PSS
- PUB
- 2018 Wetland**
- PEM
- PFO
- PSS
- PUB

**Appendix F
Exhibit F 4-14**

Enbridge

**Field Collected Wetlands and
Waterbodies**

Red Lake County, Minnesota



Date: (9/20/2018) Source: Z:\Clients\IE_FHE\bridge\Line_3_Pull_ReplacementField_Data\Wetland_Waterbody\Reports\Wetland_Waterbody_20180631\Wetland_Waterbody_WB_Appendixr_MN - Copy.mxd