

- Environmental Survey Corridor
- Access Road Survey Corridor
- Field Survey Not Complete
- Field Survey Not Required
- National Hydrography Dataset**
- Waterbody
- Intermittent Stream
- Perennial Stream
- Canal/Ditch
- NWI Wetland**
- PEM
- PSS
- L1U
- PFO
- PUB
- R2U; R4S; R5U; R3U
- Field Delineated Features**
- 2013 Sample Point
- 2014 Sample Point
- 2015 Sample Point
- 2016 Sample Point
- 2017 Sample Point
- 2018 Sample Point
- 2013 Field Delineated Waterbody
- 2014 Field Delineated Waterbody
- 2015 Field Delineated Waterbody
- 2016 Field Delineated Waterbody
- 2017 Field Delineated Waterbody
- 2018 Field Delineated Waterbody
- 2013 Wetland**
- PEM
- PFO
- PSS
- PUB
- L1UB
- 2014 Wetland**
- PEM
- PFO
- PSS
- PUB
- 2015 Wetland**
- PEM
- PFO
- PSS
- PUB
- 2016 Wetland**
- PEM
- PFO
- PSS
- PUB
- 2017 Wetland**
- PEM
- PFO
- PSS
- PUB
- 2018 Wetland**
- PEM
- PFO
- PSS
- PUB

**Appendix F
Exhibit F 3-1**

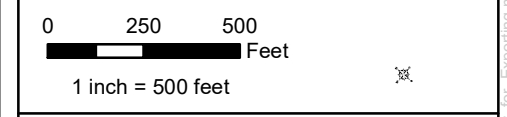
Enbridge

**Field Collected Wetlands and
Waterbodies**

Pennington County, Minnesota



Date: (9/20/2018) Source: Z:\Clients\E_F\EnbridgeLine_3_Pull_ReplacementField_Data\Wetland_Waterbody\Reports\Wetland_Waterbody_20180831\Wetland_Waterbody_20180831\Wetland_Waterbody_20180831\Wetland_Waterbody_20180831_Exporting.mxd



- Environmental Survey Corridor
- Access Road Survey Corridor
- Field Survey Not Complete
- Field Survey Not Required
- National Hydrography Dataset**
- ~ Waterbody
- ~ Intermittent Stream
- ~ Perennial Stream
- ~ Canal/Ditch
- NWI Wetland**
- PEM
- PFO
- PSS
- PUB
- L1U
- R2U; R4S; R5U; R3U
- Field Delineated Features**
- 2013 Sample Point
- 2014 Sample Point
- 2015 Sample Point
- 2016 Sample Point
- 2017 Sample Point
- 2018 Sample Point
- ~ 2013 Field Delineated Waterbody
- ~ 2014 Field Delineated Waterbody
- ~ 2015 Field Delineated Waterbody
- ~ 2016 Field Delineated Waterbody
- ~ 2017 Field Delineated Waterbody
- ~ 2018 Field Delineated Waterbody
- 2013 Wetland**
- PEM
- PFO
- PSS
- PUB
- L1UB
- 2014 Wetland**
- PEM
- PFO
- PSS
- PUB
- 2015 Wetland**
- PEM
- PFO
- PSS
- PUB
- 2016 Wetland**
- PEM
- PFO
- PSS
- PUB
- 2017 Wetland**
- PEM
- PFO
- PSS
- PUB
- 2018 Wetland**
- PEM
- PFO
- PSS
- PUB

**Appendix F
Exhibit F 3-4**

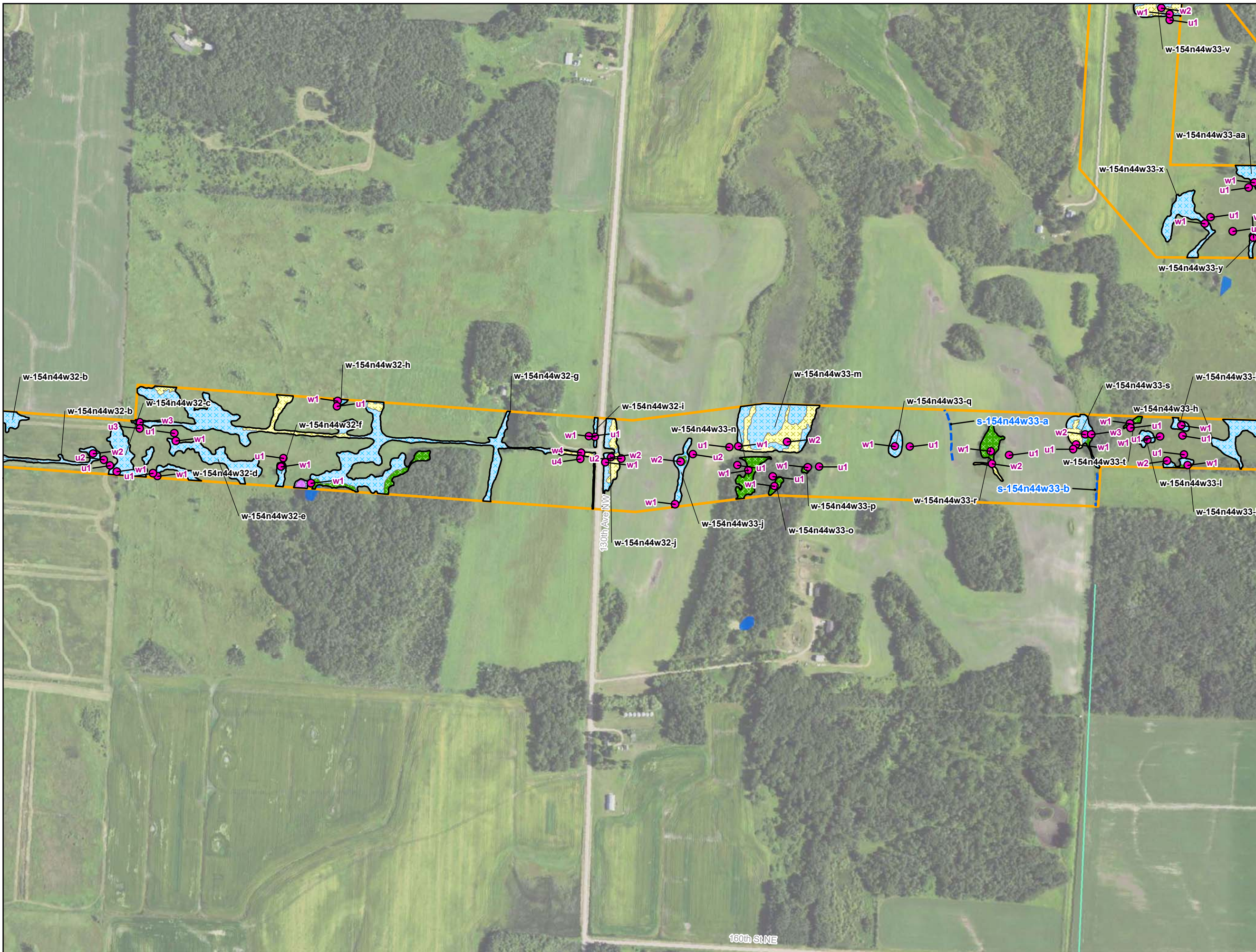
Enbridge

**Field Collected Wetlands and
Waterbodies**

Pennington County, Minnesota



Source: Z:\Clients\IE_FHE\bridge\Line_3_Pull_Replacement\field_Data\Wetland_Waterbody\Reports\Wetland_Waterbody_20180831\Wetland_Waterbody_WB_Appendix_F3-4_Exporting.mxd



- Environmental Survey Corridor
- Access Road Survey Corridor
- Field Survey Not Complete
- Field Survey Not Required
- National Hydrography Dataset**
- Waterbody
- Intermittent Stream
- Perennial Stream
- Canal/Ditch
- NWI Wetland**
- PEM
- PFO
- PSS
- PUB
- L1U
- R2U; R4S; R5U; R3U
- Field Delineated Features**
- 2013 Sample Point
- 2014 Sample Point
- 2015 Sample Point
- 2016 Sample Point
- 2017 Sample Point
- 2018 Sample Point
- 2013 Field Delineated Waterbody
- 2014 Field Delineated Waterbody
- 2015 Field Delineated Waterbody
- 2016 Field Delineated Waterbody
- 2017 Field Delineated Waterbody
- 2018 Field Delineated Waterbody
- 2013 Wetland**
- PEM
- PFO
- PSS
- PUB
- L1UB
- 2014 Wetland**
- PEM
- PFO
- PSS
- PUB
- 2015 Wetland**
- PEM
- PFO
- PSS
- PUB
- 2016 Wetland**
- PEM
- PFO
- PSS
- PUB
- 2017 Wetland**
- PEM
- PFO
- PSS
- PUB
- 2018 Wetland**
- PEM
- PFO
- PSS
- PUB

**Appendix F
Exhibit F 3-8**

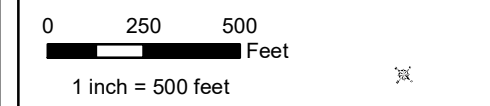
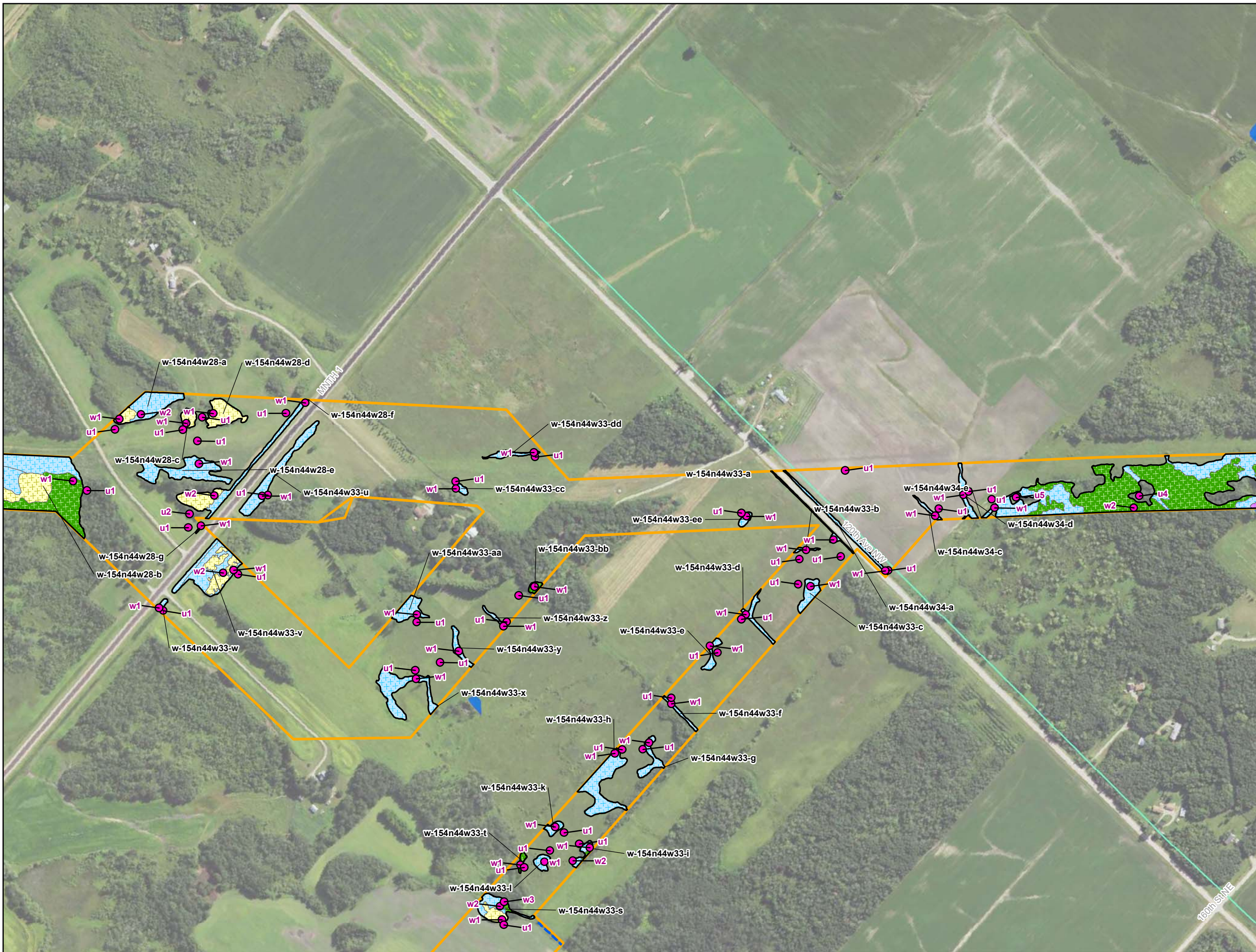
Enbridge

**Field Collected Wetlands and
Waterbodies**

Pennington County, Minnesota



Date: (9/20/2018) Source: Z:\Clients\IE_FHE\bridgeLine_3_Pull_ReplacementField_Data\Wetland_Waterbody\Reports\Wetland_Waterbody_20180631\Wetland_WB_Appendix_F_MN - Copy_for_Exporting.mxd



- Environmental Survey Corridor
- Access Road Survey Corridor
- Field Survey Not Complete
- Field Survey Not Required
- National Hydrography Dataset**
- Waterbody
- Intermittent Stream
- Perennial Stream
- Canal/Ditch
- NWI Wetland**
- PEM
- PFO
- PSS
- PUB
- L1U
- R2U; R4S; R5U; R3U
- Field Delineated Features**
- 2013 Sample Point
- 2014 Sample Point
- 2015 Sample Point
- 2016 Sample Point
- 2017 Sample Point
- 2018 Sample Point
- 2013 Field Delineated Waterbody
- 2014 Field Delineated Waterbody
- 2015 Field Delineated Waterbody
- 2016 Field Delineated Waterbody
- 2017 Field Delineated Waterbody
- 2018 Field Delineated Waterbody
- 2013 Wetland**
- PEM
- PFO
- PSS
- PUB
- L1UB
- 2014 Wetland**
- PEM
- PFO
- PSS
- PUB
- 2015 Wetland**
- PEM
- PFO
- PSS
- PUB
- 2016 Wetland**
- PEM
- PFO
- PSS
- PUB
- 2017 Wetland**
- PEM
- PFO
- PSS
- PUB
- 2018 Wetland**
- PEM
- PFO
- PSS
- PUB

Appendix F
Exhibit F 3-9

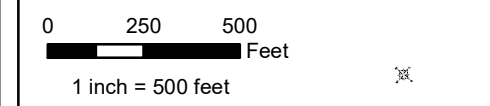
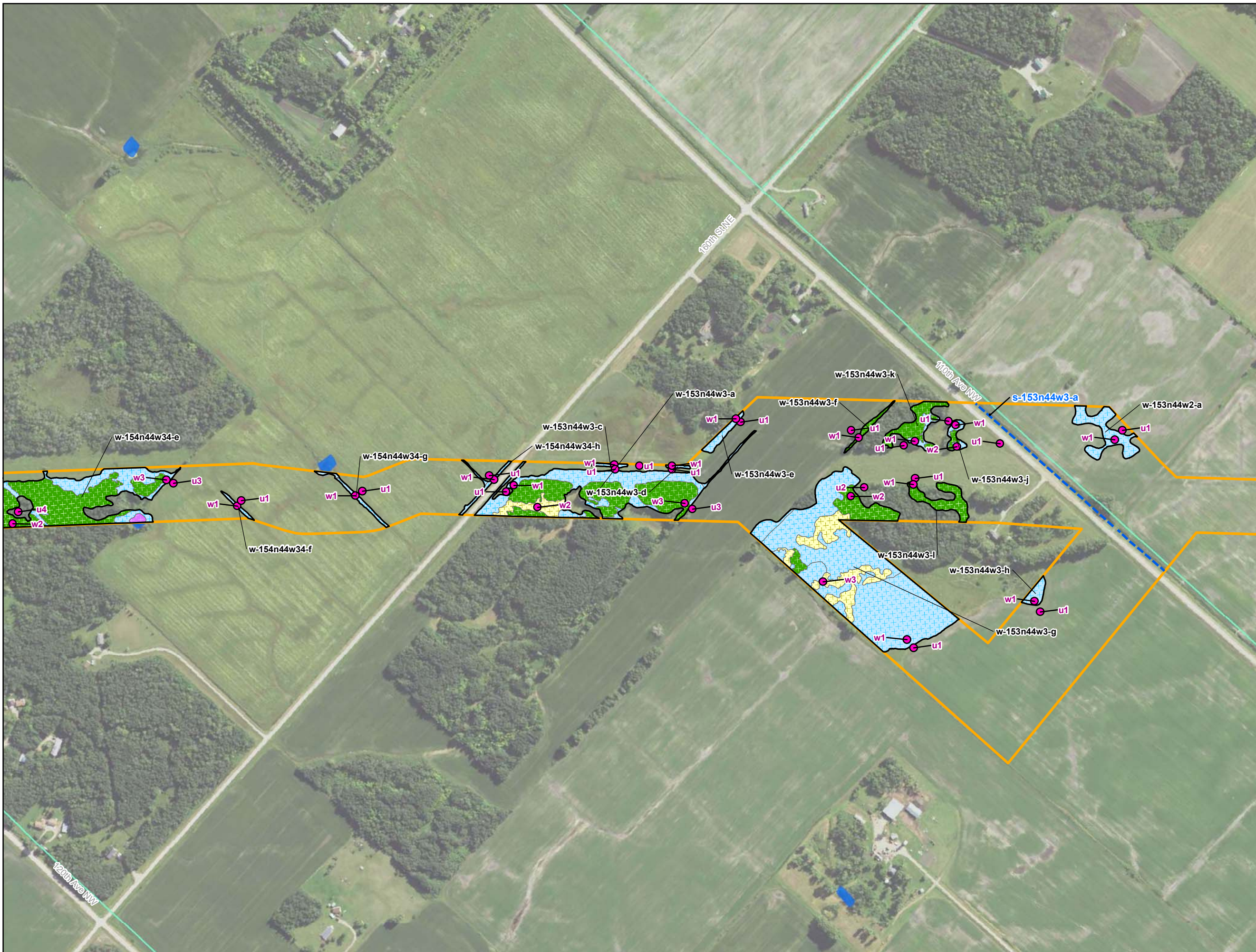
Enbridge

Field Collected Wetlands and Waterbodies

Pennington County, Minnesota

For Environmental Review Purposes Only September 2018

Date: (9/20/2018) Source: Z:\Clients\E_F\Enbridge\Line_3_P\Full_Replacement\Field_Data\Wetland_Waterbody\Reports\Wetland_Waterbody_20180631\Wetland_Waterbody_20180631\MN154R_Wetland_Waterbody_20180631\MN154R_Wetland_Waterbody_20180631_Exporting.mxd



- Environmental Survey Corridor
- Access Road Survey Corridor
- Field Survey Not Complete
- Field Survey Not Required
- National Hydrography Dataset**
- Waterbody
- Intermittent Stream
- Perennial Stream
- Canal/Ditch
- NWI Wetland**
- PEM
- PFO
- PSS
- PUB
- L1U
- R2U; R4S; R5U; R3U
- Field Delineated Features**
- 2013 Sample Point
- 2014 Sample Point
- 2015 Sample Point
- 2016 Sample Point
- 2017 Sample Point
- 2018 Sample Point
- 2013 Field Delineated Waterbody
- 2014 Field Delineated Waterbody
- 2015 Field Delineated Waterbody
- 2016 Field Delineated Waterbody
- 2017 Field Delineated Waterbody
- 2018 Field Delineated Waterbody
- 2013 Wetland**
- PEM
- PFO
- PSS
- PUB
- L1UB
- 2014 Wetland**
- PEM
- PFO
- PSS
- PUB
- 2015 Wetland**
- PEM
- PFO
- PSS
- PUB
- 2016 Wetland**
- PEM
- PFO
- PSS
- PUB
- 2017 Wetland**
- PEM
- PFO
- PSS
- PUB
- 2018 Wetland**
- PEM
- PFO
- PSS
- PUB

**Appendix F
Exhibit F 3-10**

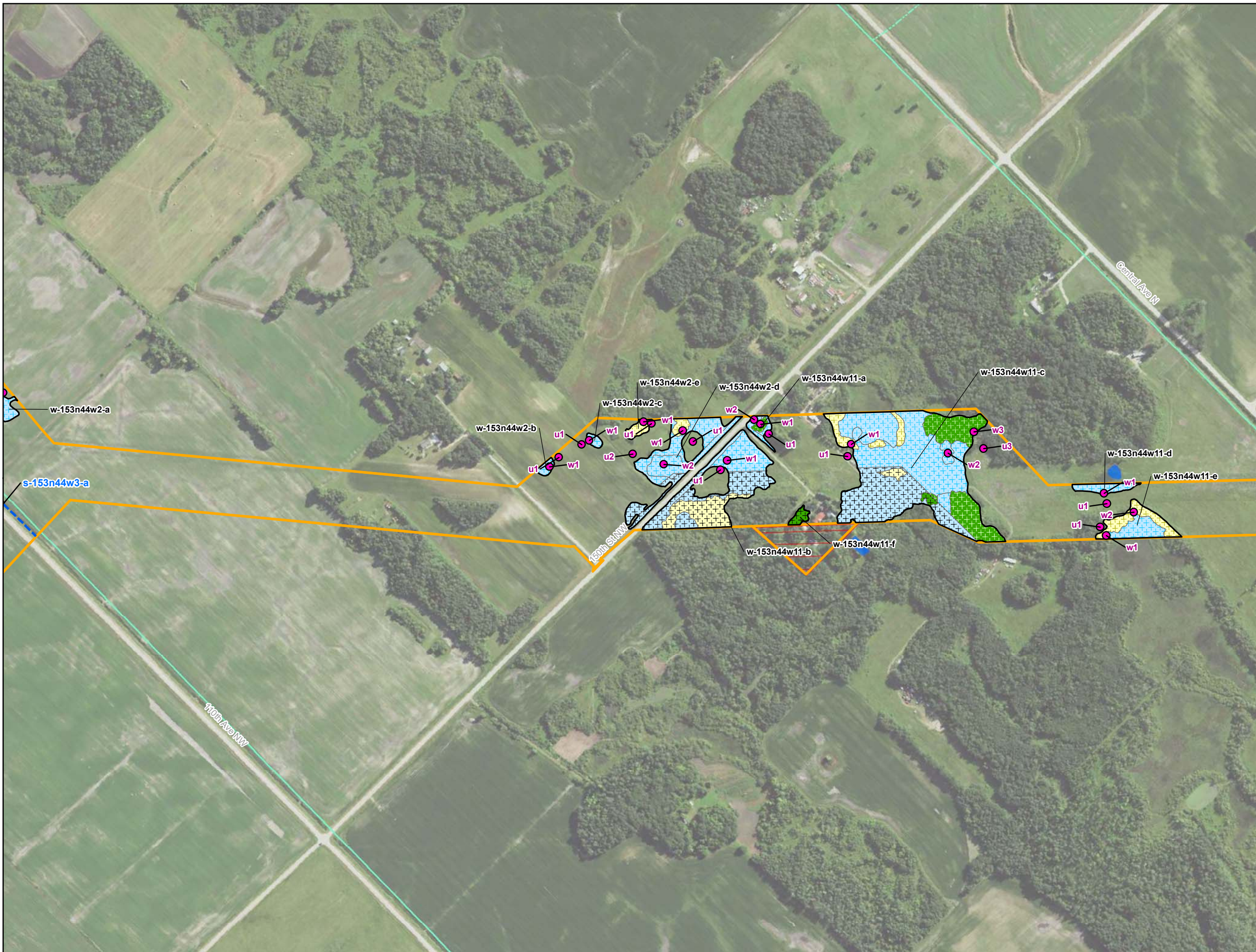
Enbridge

**Field Collected Wetlands and
Waterbodies**

Pennington County, Minnesota



Date: (9/20/2018) Source: Z:\Clients\IE_FHE\bridge\Line_3_Pull_Replacement\field_Data\Wetland_Waterbody\Reports\Wetland_Waterbody_20180631\Wetland_Waterbody_WB_Appendix_MN - Copy_for_Exporting.mxd



- Environmental Survey Corridor
- Access Road Survey Corridor
- Field Survey Not Complete
- Field Survey Not Required
- National Hydrography Dataset**
- Waterbody
- Intermittent Stream
- Perennial Stream
- Canal/Ditch
- NWI Wetland**
- PEM
- PFO
- PSS
- PUB
- L1U
- R2U; R4S; R5U; R3U
- Field Delineated Features**
- 2013 Sample Point
- 2014 Sample Point
- 2015 Sample Point
- 2016 Sample Point
- 2017 Sample Point
- 2018 Sample Point
- 2013 Field Delineated Waterbody
- 2014 Field Delineated Waterbody
- 2015 Field Delineated Waterbody
- 2016 Field Delineated Waterbody
- 2017 Field Delineated Waterbody
- 2018 Field Delineated Waterbody
- 2013 Wetland**
- PEM
- PFO
- PSS
- PUB
- L1UB
- 2014 Wetland**
- PEM
- PFO
- PSS
- PUB
- 2015 Wetland**
- PEM
- PFO
- PSS
- PUB
- 2016 Wetland**
- PEM
- PFO
- PSS
- PUB
- 2017 Wetland**
- PEM
- PFO
- PSS
- PUB
- 2018 Wetland**
- PEM
- PFO
- PSS
- PUB

**Appendix F
Exhibit F 3-11**

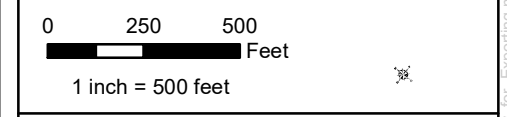
Enbridge

**Field Collected Wetlands and
Waterbodies**

Pennington County, Minnesota



Date: (9/20/2018) Source: Z:\Clients\IE_FHE\bridgeLine_3_Pull_Replacement\field_Data\Wetland_Waterbody\Reports\Wetland_Waterbody_20180631\Wetland_Waterbody_WB_Appendix_F_MN - Copy_for_Exporting.mxd




- Environmental Survey Corridor
- Access Road Survey Corridor
- Field Survey Not Complete
- Field Survey Not Required
- National Hydrography Dataset**
- ~ Waterbody
- ~ Intermittent Stream
- ~ Perennial Stream
- ~ Canal/Ditch
- NWI Wetland**
- PEM
- PFO
- PSS
- PUB
- L1U
- R2U; R4S; R5U; R3U
- Field Delineated Features**
- 2013 Sample Point
- 2014 Sample Point
- 2015 Sample Point
- 2016 Sample Point
- 2017 Sample Point
- 2018 Sample Point
- ~ 2013 Field Delineated Waterbody
- ~ 2014 Field Delineated Waterbody
- ~ 2015 Field Delineated Waterbody
- ~ 2016 Field Delineated Waterbody
- ~ 2017 Field Delineated Waterbody
- ~ 2018 Field Delineated Waterbody
- 2013 Wetland**
- PEM
- PFO
- PSS
- PUB
- L1UB
- 2014 Wetland**
- PEM
- PFO
- PSS
- PUB
- 2015 Wetland**
- PEM
- PFO
- PSS
- PUB
- 2016 Wetland**
- PEM
- PFO
- PSS
- PUB
- 2017 Wetland**
- PEM
- PFO
- PSS
- PUB
- 2018 Wetland**
- PEM
- PFO
- PSS
- PUB

Appendix F
Exhibit F 3-12

Enbridge

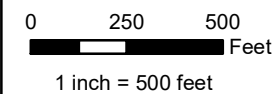
Field Collected Wetlands and Waterbodies

Pennington County, Minnesota



For Environmental Review Purposes Only September 2018

Date: (9/20/2018) Source: Z:\Clients\IE_FHE\bridge\Line_3_Pull_Replacement\field_Data\Wetland_Waterbody\Reports\Wetland_Waterbody_20180631\Wetland_Waterbody_WB_Appendix_MN - Copy_for_Exporting.mxd



- Environmental Survey Corridor
- Access Road Survey Corridor
- Field Survey Not Complete
- Field Survey Not Required
- National Hydrography Dataset**
- Waterbody
- Intermittent Stream
- Perennial Stream
- Canal/Ditch
- NWI Wetland**
- PEM
- PFO
- PSS
- PUB
- L1U
- R2U; R4S; R5U; R3U
- Field Delineated Features**
- 2013 Sample Point
- 2014 Sample Point
- 2015 Sample Point
- 2016 Sample Point
- 2017 Sample Point
- 2018 Sample Point
- 2013 Field Delineated Waterbody
- 2014 Field Delineated Waterbody
- 2015 Field Delineated Waterbody
- 2016 Field Delineated Waterbody
- 2017 Field Delineated Waterbody
- 2018 Field Delineated Waterbody
- 2013 Wetland**
- PEM
- PFO
- PSS
- PUB
- L1UB
- 2014 Wetland**
- PEM
- PFO
- PSS
- PUB
- 2015 Wetland**
- PEM
- PFO
- PSS
- PUB
- 2016 Wetland**
- PEM
- PFO
- PSS
- PUB
- 2017 Wetland**
- PEM
- PFO
- PSS
- PUB
- 2018 Wetland**
- PEM
- PFO
- PSS
- PUB

**Appendix F
Exhibit F 3-13**

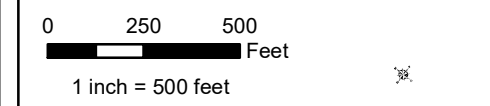
Enbridge

**Field Collected Wetlands and
Waterbodies**

Pennington County, Minnesota



Date: (9/20/2018) Source: Z:\Clients\E_F\Enbridge\Line_3_Pull_Replacement\Field_Data\Wetland_Waterbody\Reports\Wetland_Waterbody_20180631\Wetland_Waterbody_WB_Appendix_MN - Copy_for_Exporting.mxd



- Environmental Survey Corridor
- Access Road Survey Corridor
- Field Survey Not Complete
- Field Survey Not Required
- National Hydrography Dataset**
- Waterbody
- Intermittent Stream
- Perennial Stream
- Canal/Ditch
- NWI Wetland**
- PEM
- PSS
- L1U
- PFO
- PUB
- R2U; R4S; R5U; R3U
- Field Delineated Features**
- 2013 Sample Point
- 2014 Sample Point
- 2015 Sample Point
- 2016 Sample Point
- 2017 Sample Point
- 2018 Sample Point
- 2013 Field Delineated Waterbody
- 2014 Field Delineated Waterbody
- 2015 Field Delineated Waterbody
- 2016 Field Delineated Waterbody
- 2017 Field Delineated Waterbody
- 2018 Field Delineated Waterbody
- 2013 Wetland**
- PEM
- PFO
- PSS
- PUB
- L1UB
- 2014 Wetland**
- PEM
- PFO
- PSS
- PUB
- 2015 Wetland**
- PEM
- PFO
- PSS
- PUB
- 2016 Wetland**
- PEM
- PFO
- PSS
- PUB
- 2017 Wetland**
- PEM
- PFO
- PSS
- PUB
- 2018 Wetland**
- PEM
- PFO
- PSS
- PUB

**Appendix F
Exhibit F 3-14**

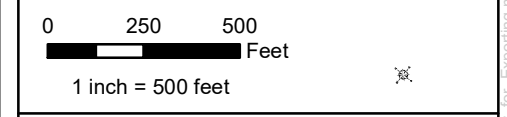
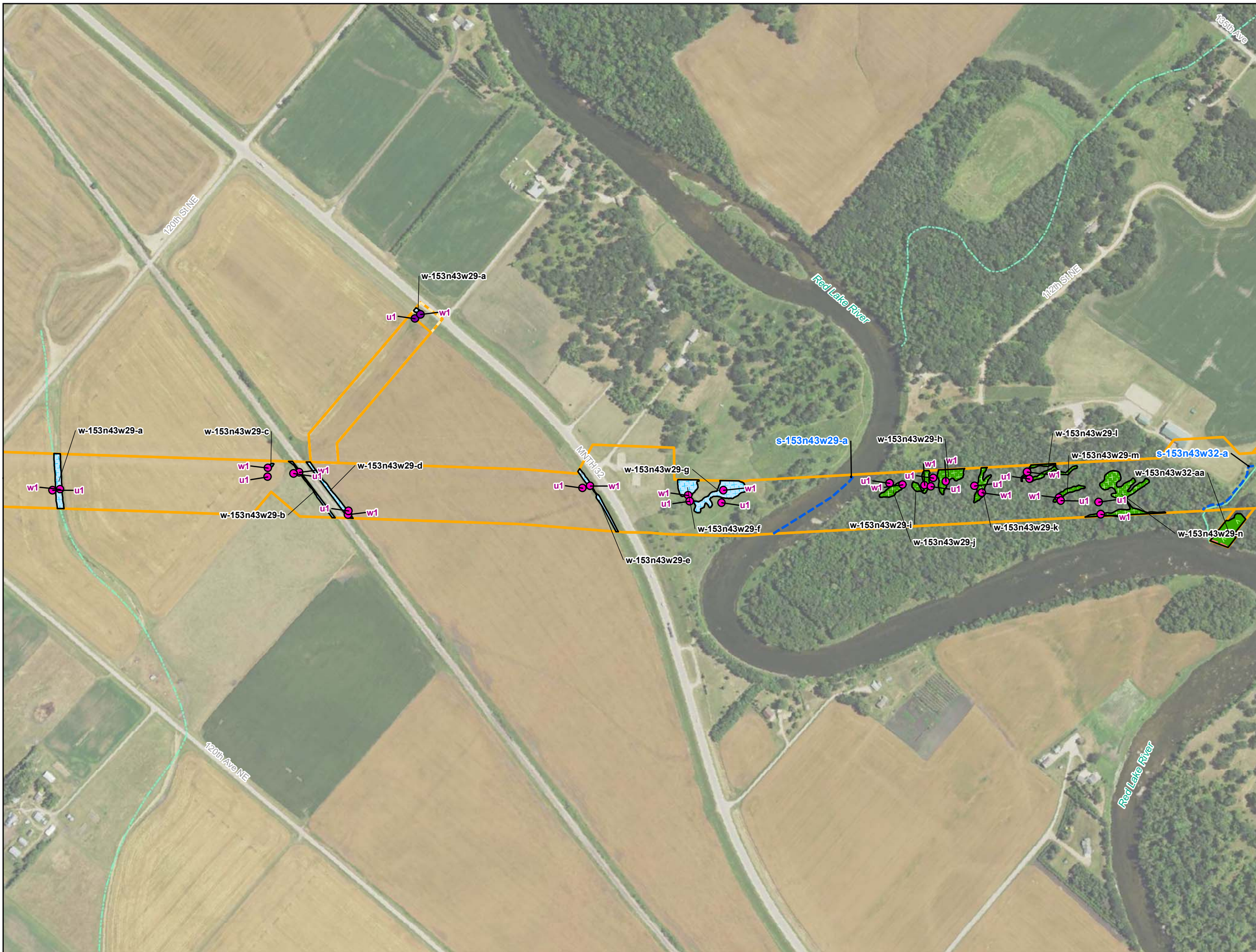
Enbridge

**Field Collected Wetlands and
Waterbodies**

Pennington County, Minnesota



Source: Z:\Clients\IE_FHE\bridge\Line_3_Pull_Replacement\field_Data\Wetland_Waterbody\Reports\Wetland_Waterbody_20180631\Wetland_Waterbody_20180631\MN-Copy_for_Exporting.mxd




- Environmental Survey Corridor
- Access Road Survey Corridor
- Field Survey Not Complete
- Field Survey Not Required
- National Hydrography Dataset**
- Waterbody
- Intermittent Stream
- Perennial Stream
- Canal/Ditch
- NWI Wetland**
- PEM
- PFO
- PSS
- PUB
- L1U
- R2U; R4S; R5U; R3U
- Field Delineated Features**
- 2013 Sample Point
- 2014 Sample Point
- 2015 Sample Point
- 2016 Sample Point
- 2017 Sample Point
- 2018 Sample Point
- 2013 Field Delineated Waterbody
- 2014 Field Delineated Waterbody
- 2015 Field Delineated Waterbody
- 2016 Field Delineated Waterbody
- 2017 Field Delineated Waterbody
- 2018 Field Delineated Waterbody
- 2013 Wetland**
- PEM
- PFO
- PSS
- PUB
- L1UB
- 2014 Wetland**
- PEM
- PFO
- PSS
- PUB
- 2015 Wetland**
- PEM
- PFO
- PSS
- PUB
- 2016 Wetland**
- PEM
- PFO
- PSS
- PUB
- 2017 Wetland**
- PEM
- PFO
- PSS
- PUB
- 2018 Wetland**
- PEM
- PFO
- PSS
- PUB

Appendix F
Exhibit F 3-15

Enbridge

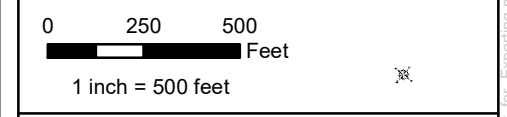
Field Collected Wetlands and Waterbodies

Pennington County, Minnesota



For Environmental Review Purposes Only September 2018

Date: (9/20/2018) Source: Z:\Clients\IE_FHE\bridgeLine_3_Pull_Replacement\field_Data\Wetland_Waterbody\Reports\Wetland_Waterbody_20180831\Wetland_Waterbody_WB_Appendix_MN - Copy_for_Exporting.mxd




- Environmental Survey Corridor
- Access Road Survey Corridor
- Field Survey Not Complete
- Field Survey Not Required
- National Hydrography Dataset**
- Waterbody
- Intermittent Stream
- Perennial Stream
- Canal/Ditch
- NWI Wetland**
- PEM
- PSS
- L1U
- PFO
- PUB
- R2U; R4S; R5U; R3U
- Field Delineated Features**
- 2013 Sample Point
- 2014 Sample Point
- 2015 Sample Point
- 2016 Sample Point
- 2017 Sample Point
- 2018 Sample Point
- 2013 Field Delineated Waterbody
- 2014 Field Delineated Waterbody
- 2015 Field Delineated Waterbody
- 2016 Field Delineated Waterbody
- 2017 Field Delineated Waterbody
- 2018 Field Delineated Waterbody
- 2013 Wetland**
- PEM
- PFO
- PSS
- PUB
- L1UB
- 2014 Wetland**
- PEM
- PFO
- PSS
- PUB
- 2015 Wetland**
- PEM
- PFO
- PSS
- PUB
- 2016 Wetland**
- PEM
- PFO
- PSS
- PUB
- 2017 Wetland**
- PEM
- PFO
- PSS
- PUB
- 2018 Wetland**
- PEM
- PFO
- PSS
- PUB

Appendix F
Exhibit F 3-17

Enbridge

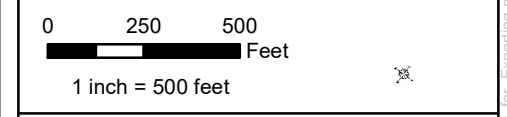
Field Collected Wetlands and Waterbodies

Pennington County, Minnesota



For Environmental Review Purposes Only September 2018

Date: (9/20/2018) Source: Z:\Clients\IE_FHE\bridgeLine_3_Pull_ReplacementField_Data\Wetland_Waterbody\Reports\Wetland_Waterbody_20180831\Wetland_Waterbody_WB_Appendix_MN - Copy_for_Exporting.mxd



- Environmental Survey Corridor
- Access Road Survey Corridor
- Field Survey Not Complete
- Field Survey Not Required
- National Hydrography Dataset**
- Waterbody
- Intermittent Stream
- Perennial Stream
- Canal/Ditch
- NWI Wetland**
- PEM
- PFO
- PSS
- PUB
- L1U
- R2U; R4S; R5U; R3U
- Field Delineated Features**
- 2013 Sample Point
- 2014 Sample Point
- 2015 Sample Point
- 2016 Sample Point
- 2017 Sample Point
- 2018 Sample Point
- 2013 Field Delineated Waterbody
- 2014 Field Delineated Waterbody
- 2015 Field Delineated Waterbody
- 2016 Field Delineated Waterbody
- 2017 Field Delineated Waterbody
- 2018 Field Delineated Waterbody
- 2013 Wetland**
- PEM
- PFO
- PSS
- PUB
- L1UB
- 2014 Wetland**
- PEM
- PFO
- PSS
- PUB
- 2015 Wetland**
- PEM
- PFO
- PSS
- PUB
- 2016 Wetland**
- PEM
- PFO
- PSS
- PUB
- 2017 Wetland**
- PEM
- PFO
- PSS
- PUB
- 2018 Wetland**
- PEM
- PFO
- PSS
- PUB

**Appendix F
Exhibit F 3-19**

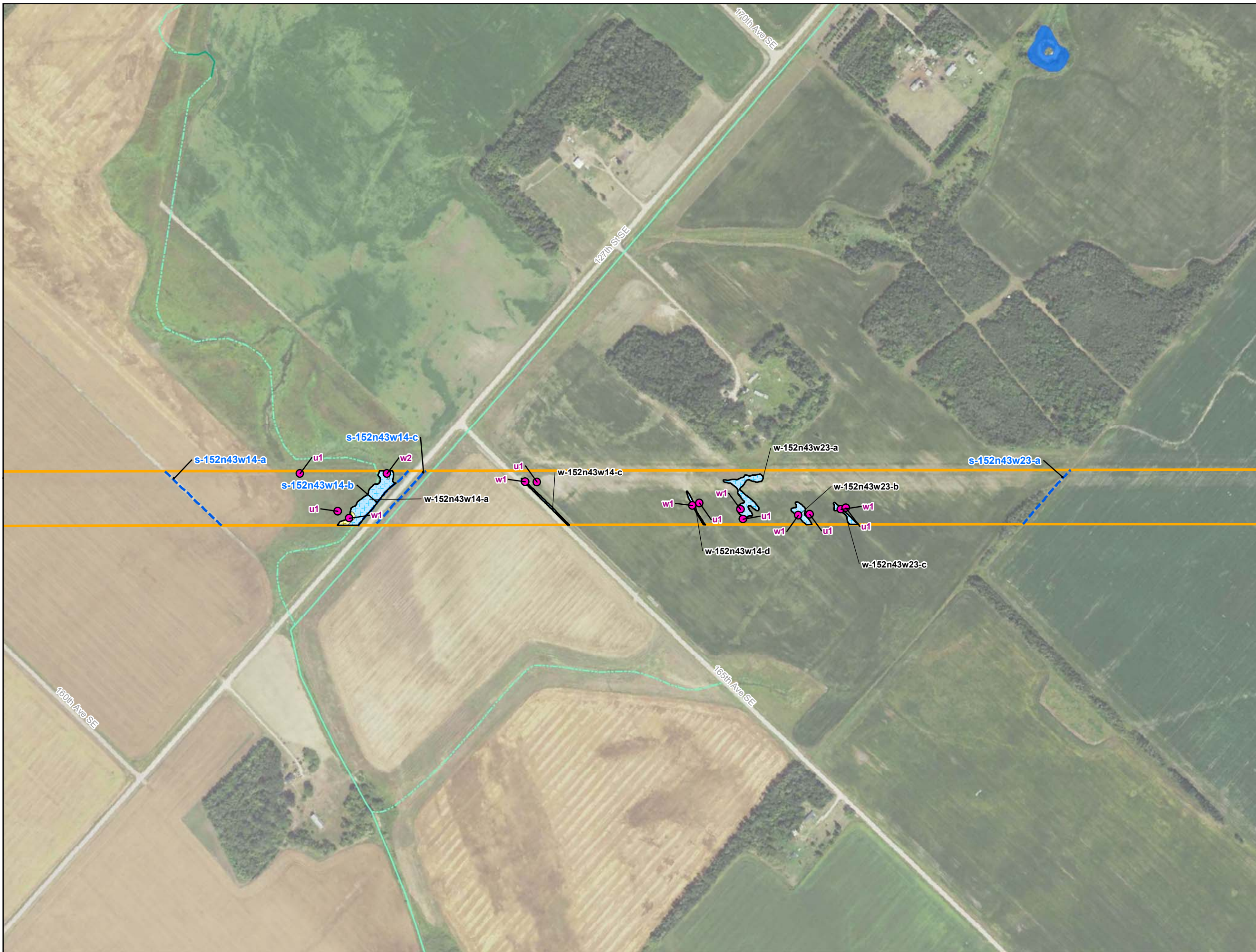
Enbridge

**Field Collected Wetlands and
Waterbodies**

Pennington County, Minnesota



Date: (9/20/2018) Source: Z:\Clients\IE_FHE\bridgeLine_3_Pull_ReplacementField_Data\Wetland_Waterbody\Reports\Wetland_Waterbody_20180631\Wetland_Waterbody_WB_Appendix_MN - Copy_for_Exporting.mxd



- Environmental Survey Corridor
- Access Road Survey Corridor
- Field Survey Not Complete
- Field Survey Not Required
- National Hydrography Dataset**
- Waterbody
- Intermittent Stream
- Perennial Stream
- Canal/Ditch
- NWI Wetland**
- PEM
- PFO
- PSS
- PUB
- L1U
- R2U; R4S; R5U; R3U
- Field Delineated Features**
- 2013 Sample Point
- 2014 Sample Point
- 2015 Sample Point
- 2016 Sample Point
- 2017 Sample Point
- 2018 Sample Point
- 2013 Field Delineated Waterbody
- 2014 Field Delineated Waterbody
- 2015 Field Delineated Waterbody
- 2016 Field Delineated Waterbody
- 2017 Field Delineated Waterbody
- 2018 Field Delineated Waterbody
- 2013 Wetland**
- PEM
- PFO
- PSS
- PUB
- L1UB
- 2014 Wetland**
- PEM
- PFO
- PSS
- PUB
- 2015 Wetland**
- PEM
- PFO
- PSS
- PUB
- 2016 Wetland**
- PEM
- PFO
- PSS
- PUB
- 2017 Wetland**
- PEM
- PFO
- PSS
- PUB
- 2018 Wetland**
- PEM
- PFO
- PSS
- PUB

Appendix F
Exhibit F 3-20

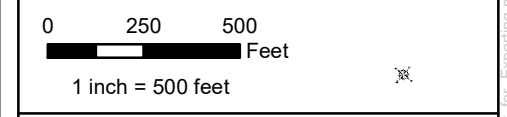
Enbridge

Field Collected Wetlands and Waterbodies

Pennington County, Minnesota

For Environmental Review Purposes Only September 2018

Date: (9/20/2018) Source: Z:\Clients\IE_FHE\bridge\Line_3_Pull_Replacement\field_Data\Wetland_Waterbody\Reports\Wetland_Waterbody_20180631\Wetland_Waterbody_20180631\Wetland_Waterbody_20180631\Wetland_Waterbody_20180631_Exporting.mxd




- Environmental Survey Corridor
- Access Road Survey Corridor
- Field Survey Not Complete
- Field Survey Not Required
- National Hydrography Dataset**
- Waterbody
- Intermittent Stream
- Perennial Stream
- Canal/Ditch
- NWI Wetland**
- PEM
- PFO
- PSS
- PUB
- L1U
- R2U; R4S; R5U; R3U
- Field Delineated Features**
- 2013 Sample Point
- 2014 Sample Point
- 2015 Sample Point
- 2016 Sample Point
- 2017 Sample Point
- 2018 Sample Point
- 2013 Field Delineated Waterbody
- 2014 Field Delineated Waterbody
- 2015 Field Delineated Waterbody
- 2016 Field Delineated Waterbody
- 2017 Field Delineated Waterbody
- 2018 Field Delineated Waterbody
- 2013 Wetland**
- PEM
- PFO
- PSS
- PUB
- L1UB
- 2014 Wetland**
- PEM
- PFO
- PSS
- PUB
- 2015 Wetland**
- PEM
- PFO
- PSS
- PUB
- 2016 Wetland**
- PEM
- PFO
- PSS
- PUB
- 2017 Wetland**
- PEM
- PFO
- PSS
- PUB
- 2018 Wetland**
- PEM
- PFO
- PSS
- PUB

Appendix F
Exhibit F 3-21

Enbridge

Field Collected Wetlands and Waterbodies

Pennington County, Minnesota



For Environmental Review Purposes Only September 2018

Date: (9/20/2018) Source: Z:\Clients\IE_FHE\bridge\Line_3_Pull_Replacement\field_Data\Wetland_Waterbody\Reports\Wetland_Waterbody_2018060310M\T102R_Wetland_WB_Appendix_MN - Copy_for_Exporting.mxd