

- Environmental Survey Corridor
- Access Road Survey Corridor
- NWI Wetlands
- National Hydrography Dataset (NHD)
  - Perennial Stream
  - Intermittent Stream
  - Canal/Ditch
  - Waterbody
- Hydric Soils - (SSURGO)
  - Hydric (100%)
  - Hydric (66 to 99%)
  - Hydric (33 to 65%)
  - Hydric (1 to 32%)
  - Not Hydric (0%)

## Appendix C Exhibit C 8-1

### Enbridge

#### Desktop Environmental Features

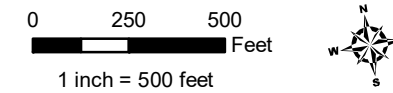
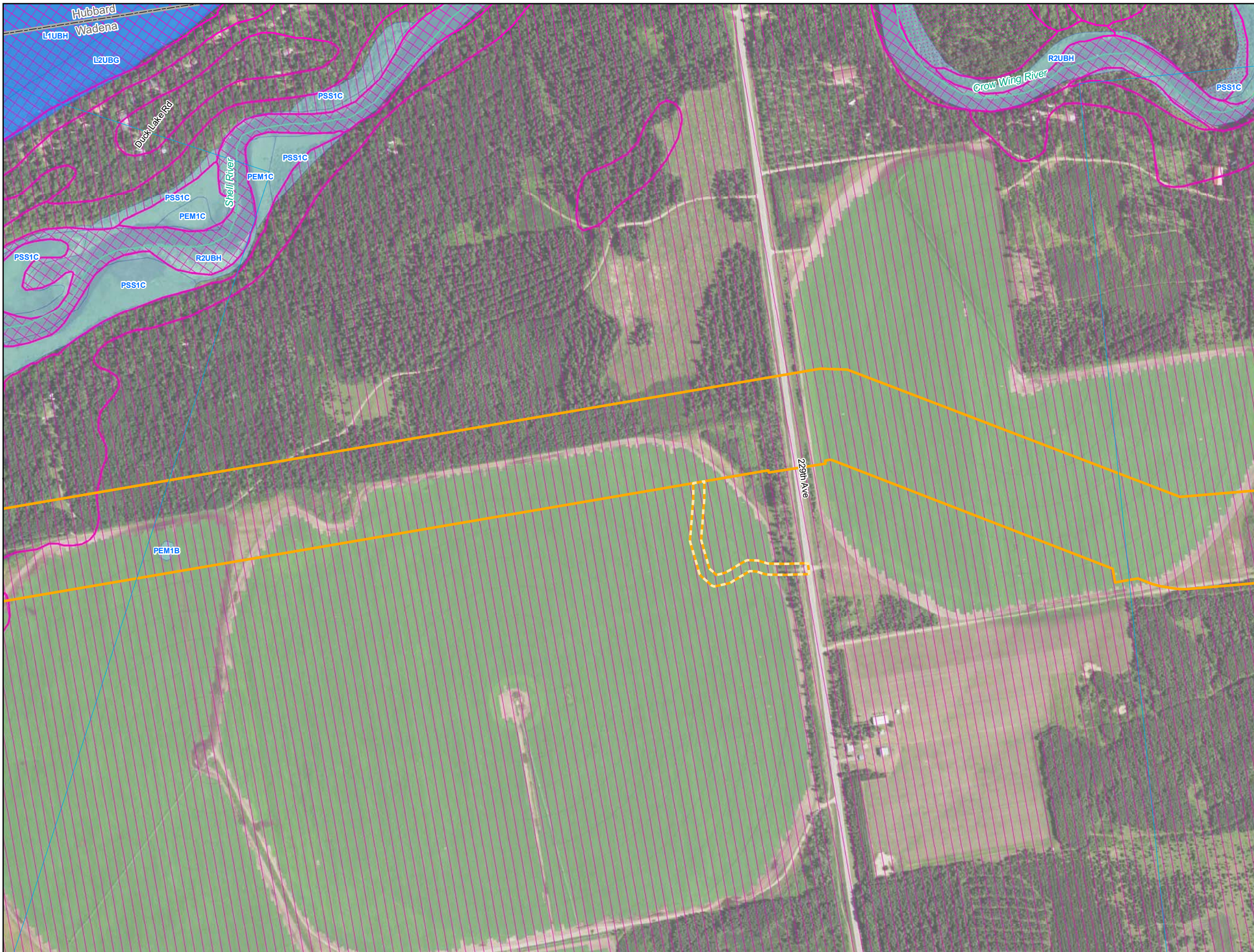
**Wadena County, Minnesota**















September 2018

For Environmental Review Purposes Only

Date: (9/13/2018) Source: Z:\Clients\IE\_FHE\enbridge\Line\_3\_Full\_Replacement\field\_Data\Wetland\Waterbody\Reports\Wetland\_Waterbody\_20180631\MMT\LSR\_Wetland\_WB\_AppendixC\_MM\_bkgs.mxd



-  Environmental Survey Corridor
-  Access Road Survey Corridor
-  NWI Wetlands
- National Hydrography Dataset (NHD)
  -  Perennial Stream
  -  Intermittent Stream
  -  Canal/Ditch
  -  Waterbody
- Hydric Soils - (SSURGO)
  -  Hydric (100%)
  -  Hydric (66 to 99%)
  -  Hydric (33 to 65%)
  -  Hydric (1 to 32%)
  -  Not Hydric (0%)

## Appendix C Exhibit C 8-2

### Enbridge

#### Desktop Environmental Features

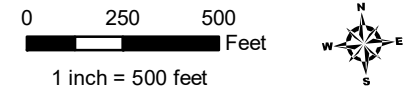
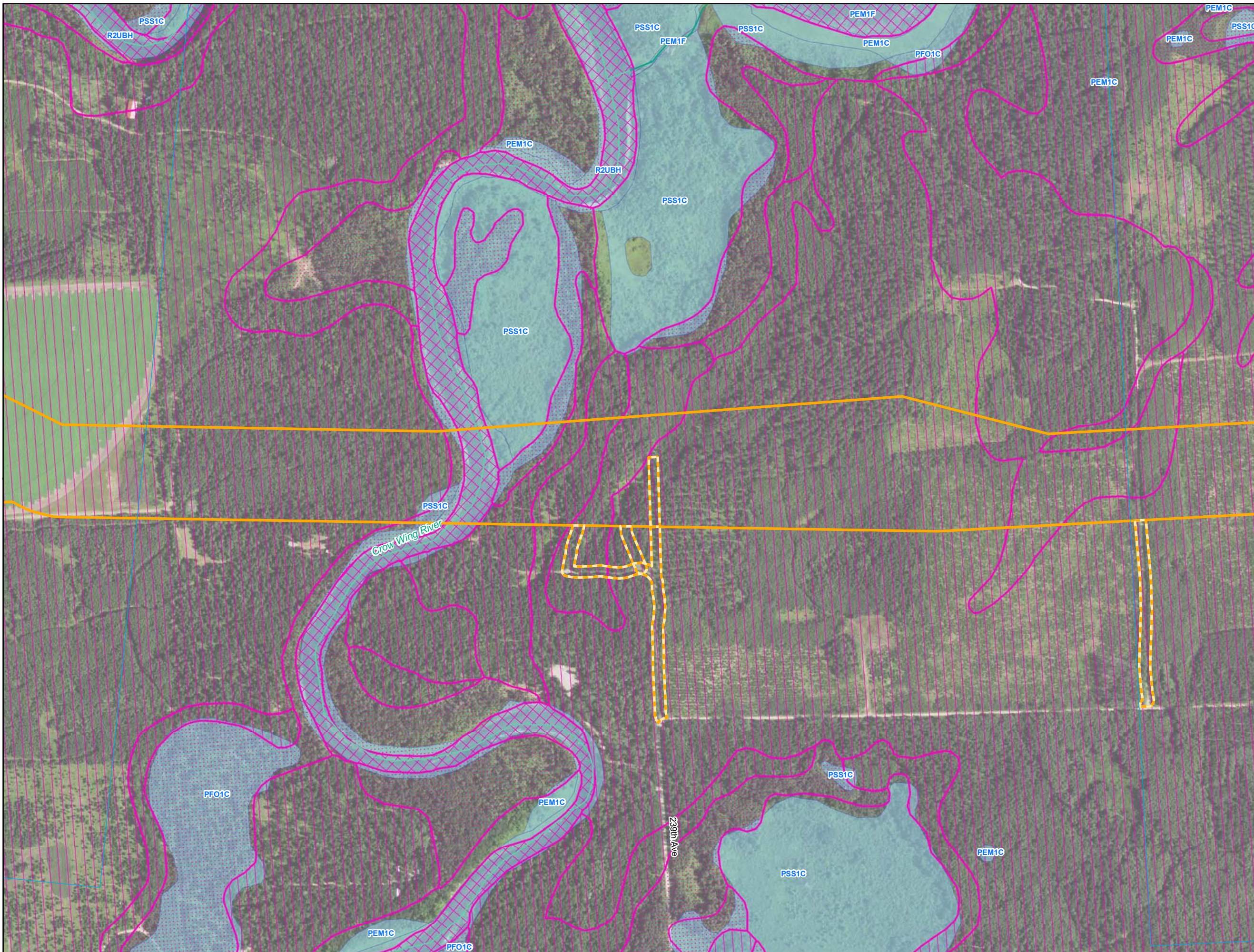
Wadena County, Minnesota



September 2018

For Environmental Review Purposes Only

Date: (9/13/2018) Source: Z:\Clients\IE\_FHE\enbridge\Line\_3\_Full\_Replacement\Field\_Data\Wetland\_Waterbody\Reports\Wetland\_Waterbody\_2018060310MNT\CSR\_Wetland\_WB\_AppendixC\_MN\_bk1.mxd



- Environmental Survey Corridor
- Access Road Survey Corridor
- NWI Wetlands
- National Hydrography Dataset (NHD)
  - Perennial Stream
  - Intermittent Stream
  - Canal/Ditch
  - Waterbody
- Hydric Soils - (SSURGO)
  - Hydric (100%)
  - Hydric (66 to 99%)
  - Hydric (33 to 65%)
  - Hydric (1 to 32%)
  - Not Hydric (0%)

## Appendix C Exhibit C 8-3

**Enbridge**

**Desktop Environmental  
Features**

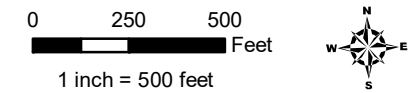
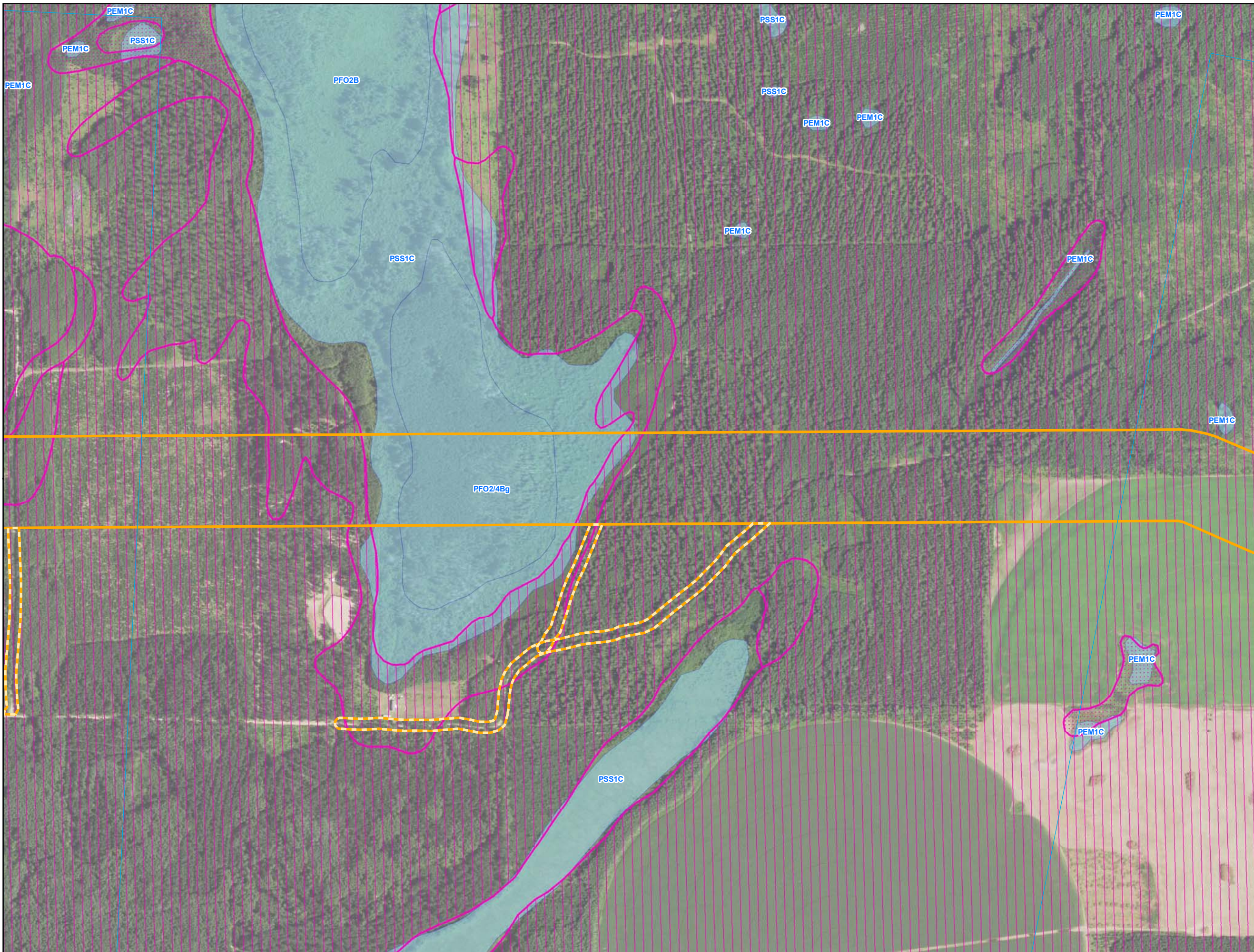
**Wadena County, Minnesota**



September 2018

For Environmental Review Purposes Only

Source: Z:\Clients\IE\_FIE\Enbridge\_Line\_3\_Full\_Replacement\MapData\Waterbody\Reports\Wetland\_Waterbody\_2018060310MNT\CSR\_Wetland\_WB\_AppendixC\_MN\_bkgs.mxd



- Environmental Survey Corridor
- Access Road Survey Corridor
- NWI Wetlands
- National Hydrography Dataset (NHD)
  - Perennial Stream
  - Intermittent Stream
  - Canal/Ditch
  - Waterbody
- Hydric Soils - (SSURGO)
  - Hydric (100%)
  - Hydric (66 to 99%)
  - Hydric (33 to 65%)
  - Hydric (1 to 32%)
  - Not Hydric (0%)

## Appendix C Exhibit C 8-4

### Enbridge

#### Desktop Environmental Features

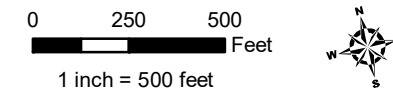
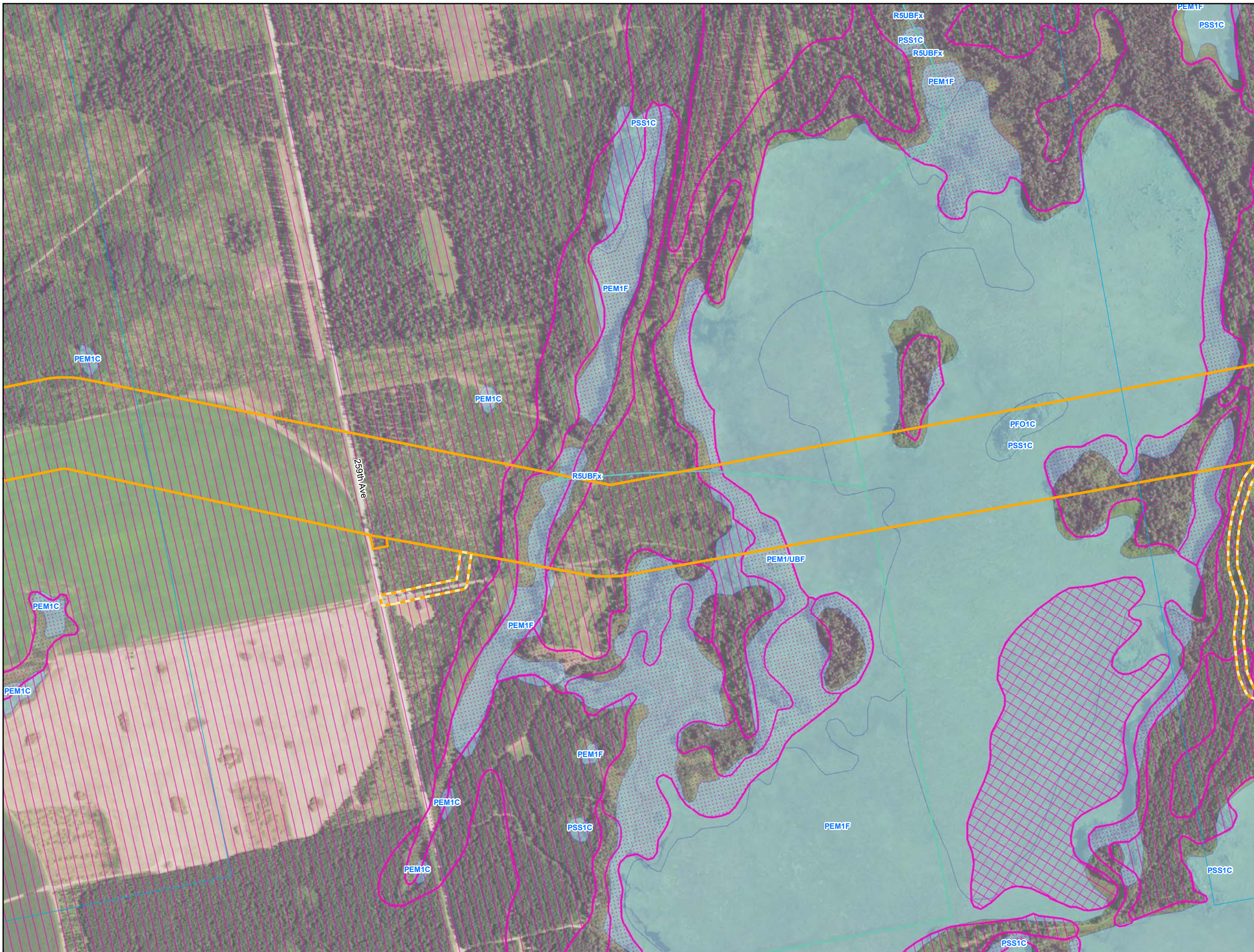
**Wadena County, Minnesota**



September 2018

For Environmental Review Purposes Only

Date: (9/13/2018) Source: Z:\Clients\IE\_FHE\enbridge\Line\_3\_Full\_Replacement\field\_Data\Wetland\_Waterbody\Reports\Wetland\_Waterbody\_20180631\WMT\CSR\_Wetland\_WB\_AppendixC\_MN\_bk1.mxd



- Environmental Survey Corridor
- Access Road Survey Corridor
- NWI Wetlands
- National Hydrography Dataset (NHD)
  - Perennial Stream
  - Intermittent Stream
  - Canal/Ditch
  - Waterbody
- Hydric Soils - (SSURGO)
  - Hydric (100%)
  - Hydric (66 to 99%)
  - Hydric (33 to 65%)
  - Hydric (1 to 32%)
  - Not Hydric (0%)

## Appendix C Exhibit C 8-5

**Enbridge**  
**Desktop Environmental  
Features**

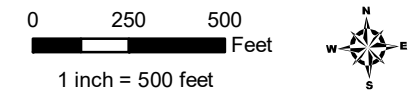
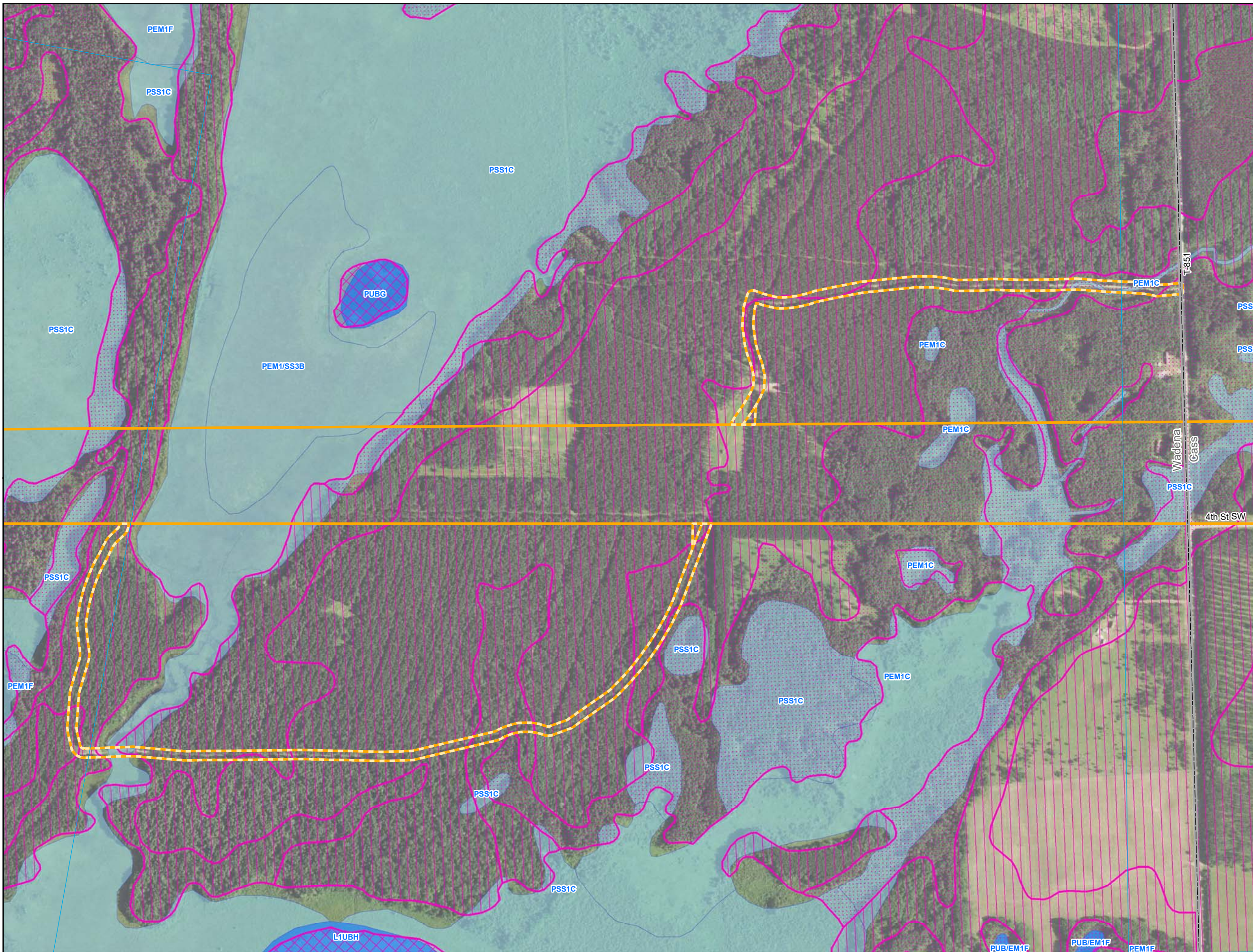
**Wadena County, Minnesota**



September 2018

For Environmental Review Purposes Only

Date: (9/13/2018) Source: Z:\Clients\IE\_FHE\enbridge\Line\_3\_Full\_Replacement\field\_Data\Wetland\Waterbody\Reports\Wetland\_Waterbody\_2018060310MNT\CSUR\_Wetland\_WB\_AppendixC\_MN\_bkgs.mxd



- Environmental Survey Corridor
- Access Road Survey Corridor
- NWI Wetlands
- National Hydrography Dataset (NHD)
  - Perennial Stream
  - Intermittent Stream
  - Canal/Ditch
  - Waterbody
- Hydric Soils - (SSURGO)
  - Hydric (100%)
  - Hydric (66 to 99%)
  - Hydric (33 to 65%)
  - Hydric (1 to 32%)
  - Not Hydric (0%)

**Appendix C  
Exhibit C 8-6**

**Enbridge**

**Desktop Environmental  
Features**

**Wadena County, Minnesota**



September 2018

For Environmental Review Purposes Only

Date: (9/13/2018) Source: Z:\Clients\IE\_FHE\Enbridge\Line\_3\_Full\_Replacement\Field\_Data\Wetland\Wetland\Waterbody\Reports\Wetland\_Waterbody\_20180631\MMT\LSR\_Wetland\_WB\_AppendixC\_MM\_bkgs.mxd