

- Environmental Survey Corridor
- Access Road Survey Corridor
- NWI Wetlands
- National Hydrography Dataset (NHD)
 - Perennial Stream
 - Intermittent Stream
 - Canal/Ditch
 - Waterbody
- Hydric Soils - (SSURGO)
 - Hydric (100%)
 - Hydric (66 to 99%)
 - Hydric (33 to 65%)
 - Hydric (1 to 32%)
 - Not Hydric (0%)

Appendix C Exhibit C 4-1

Enbridge Desktop Environmental Features

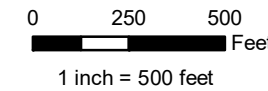
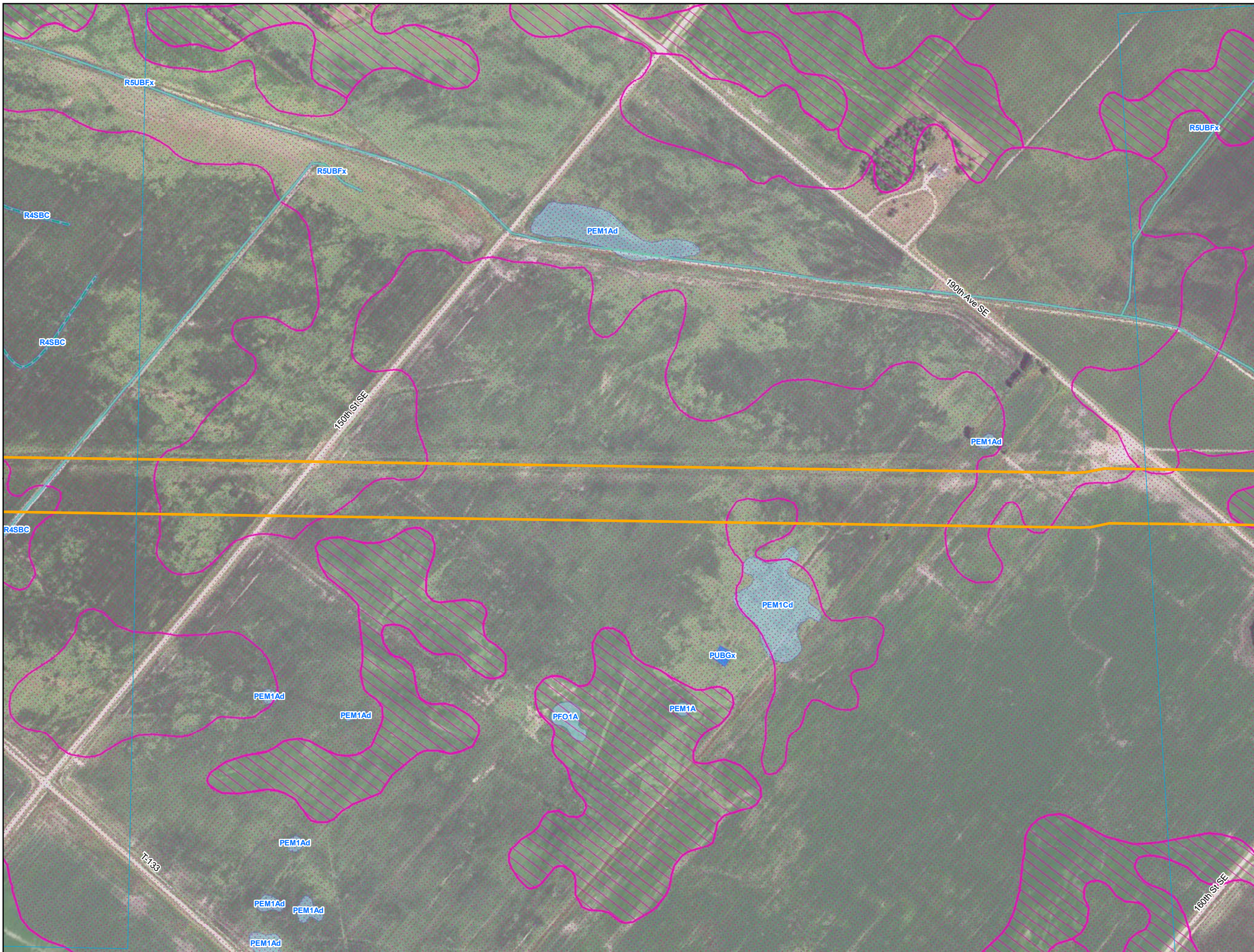
Red Lake County, Minnesota



September 2018

For Environmental Review Purposes Only

Date: (9/13/2018) Source: Z:\Clients\ENR\Enbridge\Line_3_Full_Replacement\MapData\Waterbody\Reports\Wetland_Waterbody_20180631\Map\Line3R_Wetland_WB_AppendixC_MN_bkgs.mxd



- Environmental Survey Corridor
- Access Road Survey Corridor
- NWI Wetlands
- National Hydrography Dataset (NHD)
 - Perennial Stream
 - Intermittent Stream
 - Canal/Ditch
 - Waterbody
- Hydric Soils - (SSURGO)
 - Hydric (100%)
 - Hydric (66 to 99%)
 - Hydric (33 to 65%)
 - Hydric (1 to 32%)
 - Not Hydric (0%)

Appendix C Exhibit C 4-2

Enbridge

Desktop Environmental Features

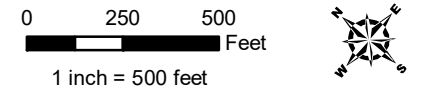
Red Lake County, Minnesota



September 2018

For Environmental Review Purposes Only

Date: (9/13/2018) Source: Z:\Clients\ENR\Enbridge\Line_3_Full_Replacement\MapData\Wetland\Waterbody\Reports\Wetland_Data\Wetland_Waterbody_20180631\MMT\LSR_Wetland_WB_AppendixC_MM_bkgs.mxd



- Environmental Survey Corridor
- Access Road Survey Corridor
- NWI Wetlands
- National Hydrography Dataset (NHD)
 - Perennial Stream
 - Intermittent Stream
 - Canal/Ditch
 - Waterbody
- Hydric Soils - (SSURGO)
 - Hydric (100%)
 - Hydric (66 to 99%)
 - Hydric (33 to 65%)
 - Hydric (1 to 32%)
 - Not Hydric (0%)

Appendix C Exhibit C 4-3

Enbridge

Desktop Environmental Features

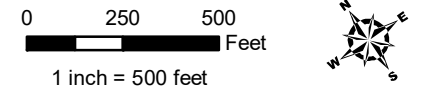
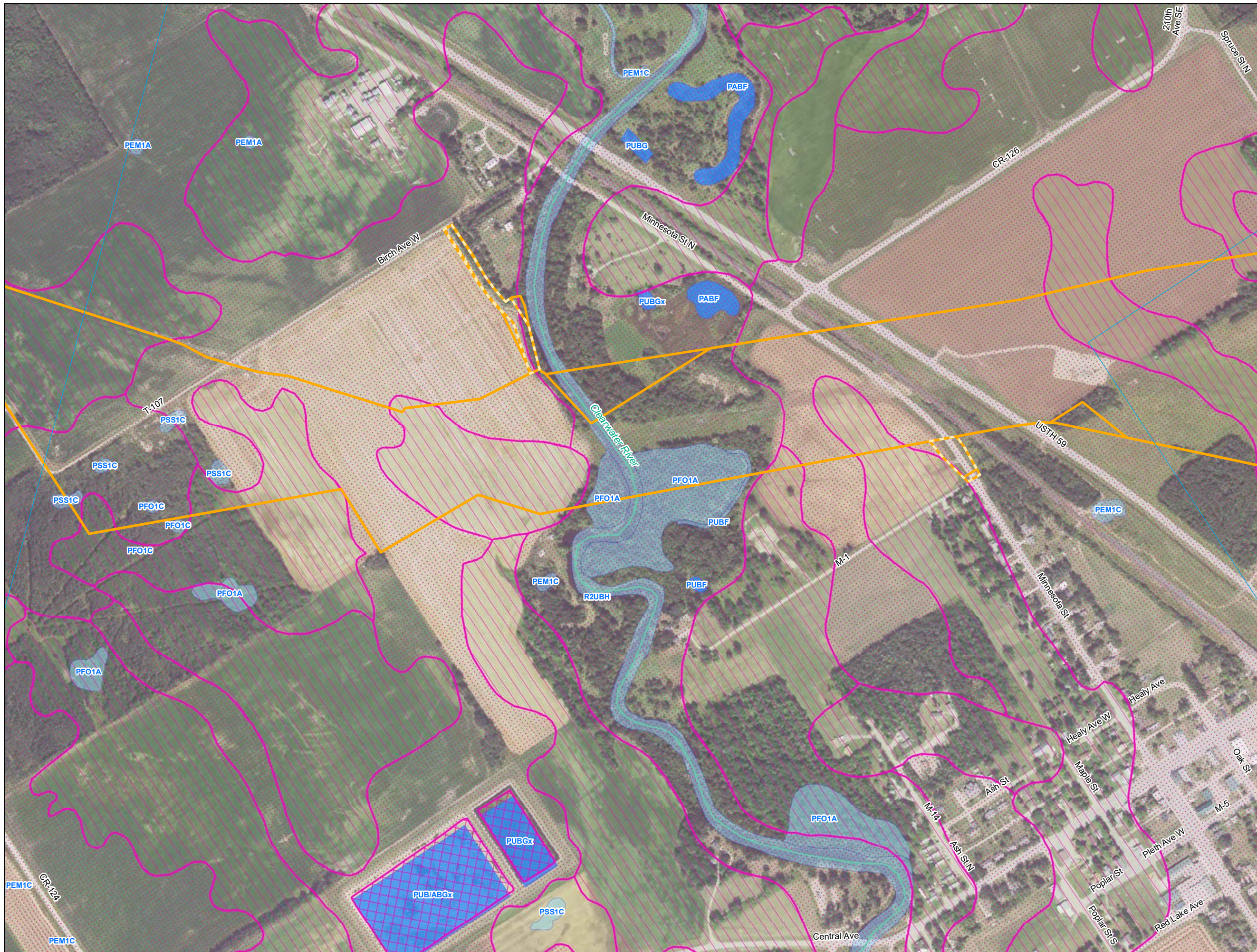
Red Lake County, Minnesota



September 2018

For Environmental Review Purposes Only

Date: (9/13/2018) Source: Z:\Clients\IE - FHE\enbridge\Line_3_Full_Replacement\field_Data\enbridge\Waterbody\Reports\Wetland_Waterbody_20180631\MMT\LSR_Wetland_WB_AppendixC_MM_bkgs.mxd



- Environmental Survey Corridor
- Access Road Survey Corridor
- NWI Wetlands
- National Hydrography Dataset (NHD)
 - Perennial Stream
 - Intermittent Stream
 - Canal/Ditch
 - Waterbody
- Hydric Soils - (SSURGO)
 - Hydric (100%)
 - Hydric (66 to 99%)
 - Hydric (33 to 65%)
 - Hydric (1 to 32%)
 - Not Hydric (0%)

Appendix C Exhibit C 4-4

Enbridge

Desktop Environmental Features

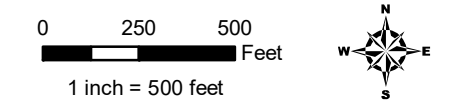
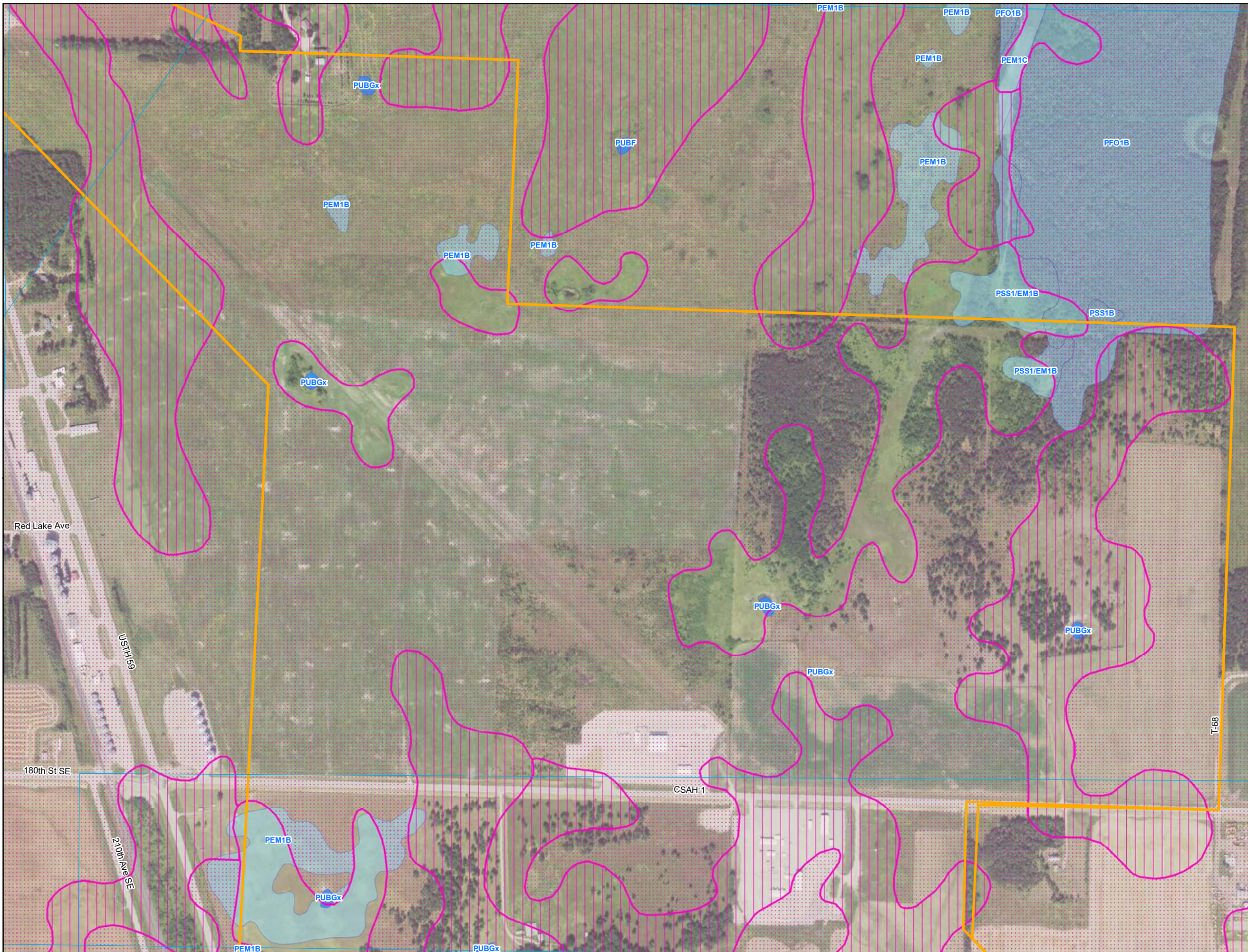
Red Lake County, Minnesota



September 2018

For Environmental Review Purposes Only

Date: (9/13/2018) Source: Z:\Clients\IE_FHE\enbridge\Line_3_Full_ReplacementField_Data\Wetland\Waterbody\Reports\Wetland_Waterbody_20180631\MMT\CR_Wetland_WB_AppendixC_MM_bkgs.mxd



- Environmental Survey Corridor
- Access Road Survey Corridor
- NWI Wetlands
- National Hydrography Dataset (NHD)
- Perennial Stream
- Intermittent Stream
- Canal/Ditch
- Waterbody
- Hydric Soils - (SSURGO)
- Hydric (100%)
- Hydric (66 to 99%)
- Hydric (33 to 65%)
- Hydric (1 to 32%)
- Not Hydric (0%)

Appendix C Exhibit C 4-5

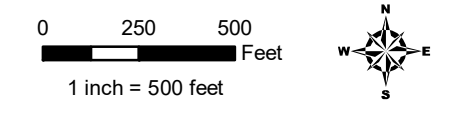
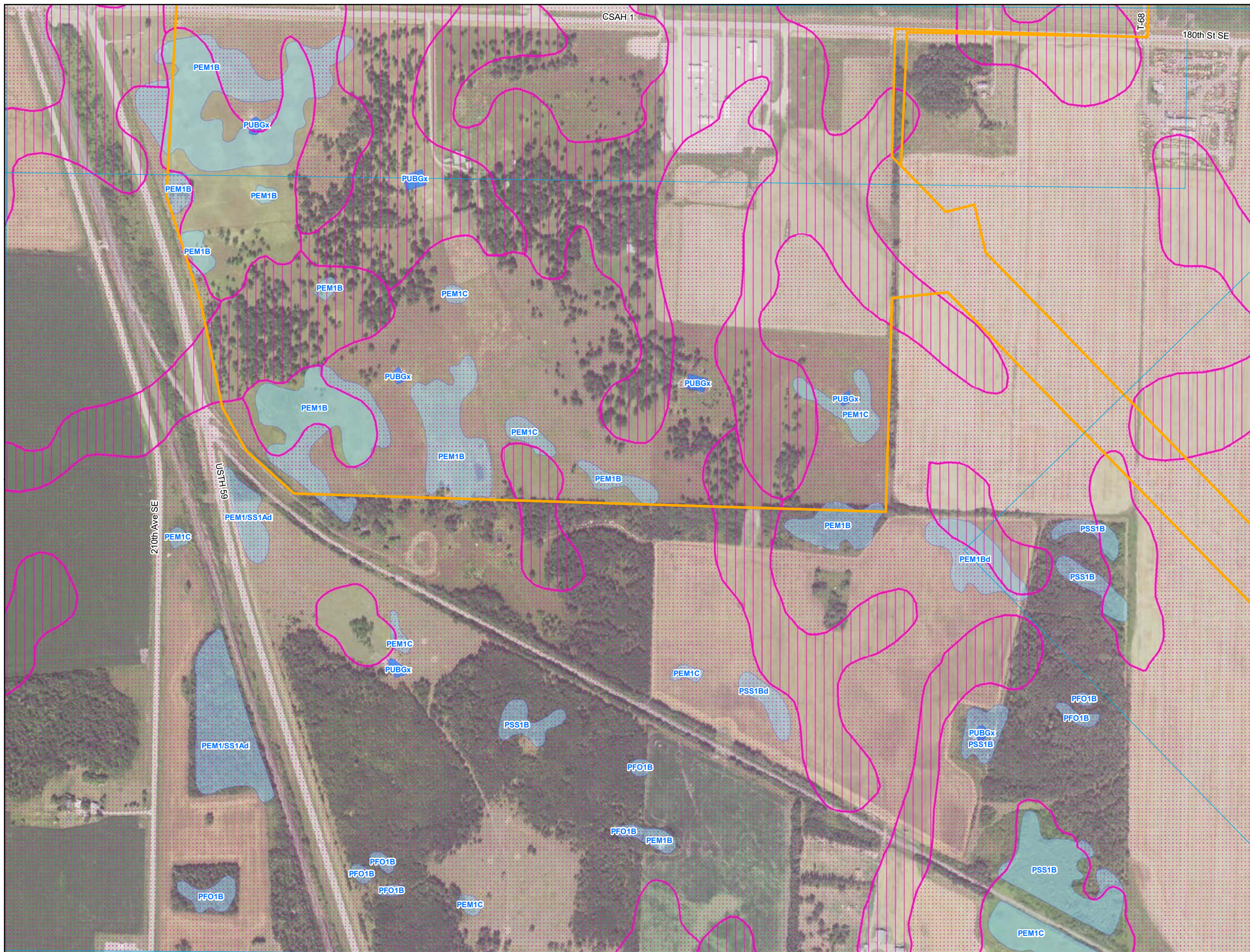
Enbridge
**Desktop Environmental
Features**
Red Lake County, Minnesota



September 2018

For Environmental Review Purposes Only

Date: (9/13/2018) Source: Z:\Clients\IE_FIE\Enbridge\Line_3_Full_Replacement\Field_Data\Wetland\Waterbody\Reports\Wetland\Waterbody_20180631\MMT\CSA1\Wetland_WB_AppendixC_MM_bk.mxd



- Environmental Survey Corridor
- Access Road Survey Corridor
- NWI Wetlands
- National Hydrography Dataset (NHD)
 - Perennial Stream
 - Intermittent Stream
 - Canal/Ditch
 - Waterbody
- Hydric Soils - (SSURGO)
 - Hydric (100%)
 - Hydric (66 to 99%)
 - Hydric (33 to 65%)
 - Hydric (1 to 32%)
 - Not Hydric (0%)

Appendix C Exhibit C 4-6

Enbridge
**Desktop Environmental
Features**

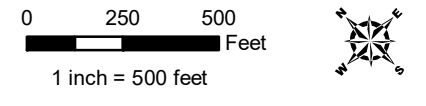
Red Lake County, Minnesota



September 2018

For Environmental Review Purposes Only

Date: (9/13/2018) Source: Z:\Clients\IE_FHE\Enbridge\Line_3_Full_Replacement\Field_Data\Wetland_Waterbody\Reports\Wetland_Waterbody_20180631\MMT\CSA1R_Wetland_WB_AppendixC_MM_bk1.mxd



- Environmental Survey Corridor
- Access Road Survey Corridor
- NWI Wetlands
- National Hydrography Dataset (NHD)
 - Perennial Stream
 - Intermittent Stream
 - Canal/Ditch
 - Waterbody
- Hydric Soils - (SSURGO)
 - Hydric (100%)
 - Hydric (66 to 99%)
 - Hydric (33 to 65%)
 - Hydric (1 to 32%)
 - Not Hydric (0%)

Appendix C Exhibit C 4-7

Enbridge

Desktop Environmental Features

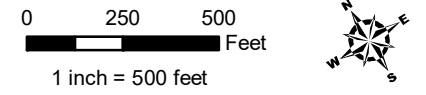
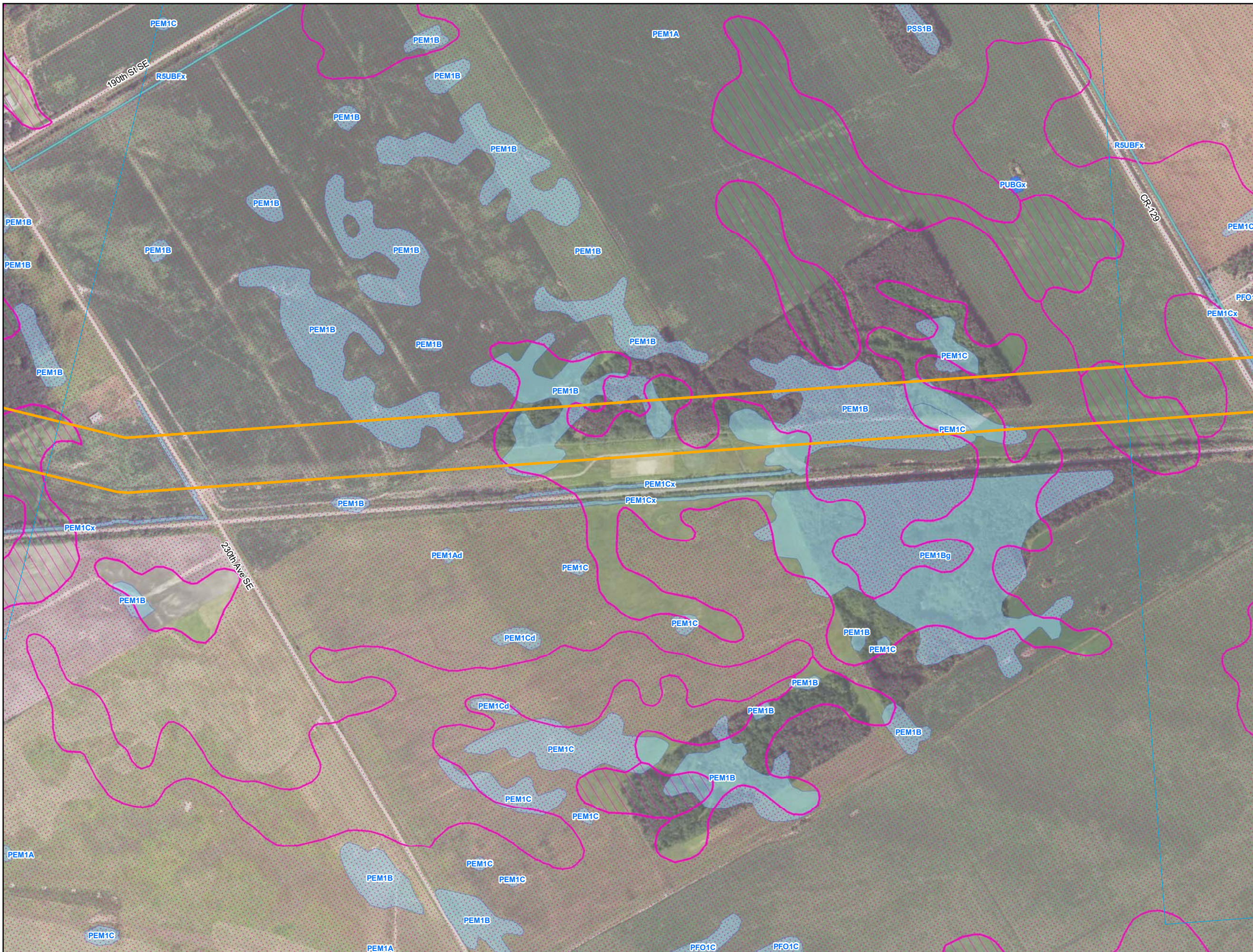
Red Lake County, Minnesota



September 2018

For Environmental Review Purposes Only

Date: (9/13/2018) Source: Z:\Clients\IE_FHE\Enbridge\Line_3_Full_Replacement\Field_Data\Wetland\Waterbody\Reposits\Wetland_Waterbody_20180631\MMT\LSR_Wetland_WB_AppendixC_MM_bkgs.mxd



- Environmental Survey Corridor
- Access Road Survey Corridor
- NWI Wetlands
- National Hydrography Dataset (NHD)
 - Perennial Stream
 - Intermittent Stream
 - Canal/Ditch
 - Waterbody
- Hydric Soils - (SSURGO)
 - Hydric (100%)
 - Hydric (66 to 99%)
 - Hydric (33 to 65%)
 - Hydric (1 to 32%)
 - Not Hydric (0%)

Appendix C Exhibit C 4-8

Enbridge

Desktop Environmental Features

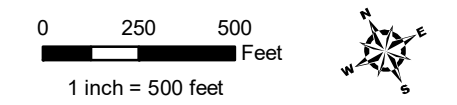
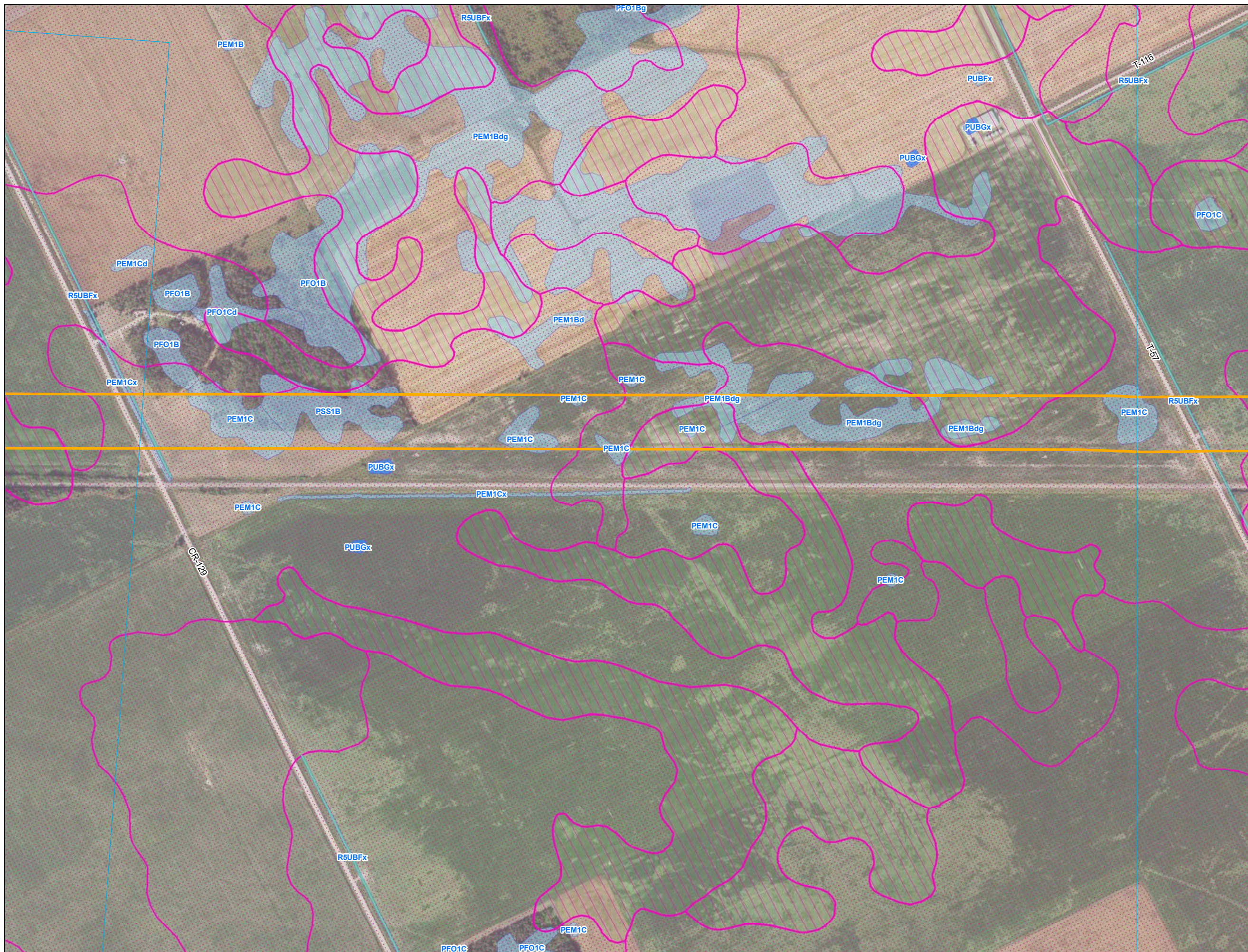
Red Lake County, Minnesota



September 2018

For Environmental Review Purposes Only

Date: (9/13/2018) Source: Z:\Clients\ENR\Enbridge\Line_3_Full_Replacement\Field_Data\Wetland\Waterbody\Reposits\Wetland_Waterbody_20180631\MMT\CSR_Wetland_WB_AppendixC_MM_bk1.mxd



- Environmental Survey Corridor
- Access Road Survey Corridor
- NWI Wetlands
- National Hydrography Dataset (NHD)
 - Perennial Stream
 - Intermittent Stream
 - Canal/Ditch
 - Waterbody
- Hydric Soils - (SSURGO)
 - Hydric (100%)
 - Hydric (66 to 99%)
 - Hydric (33 to 65%)
 - Hydric (1 to 32%)
 - Not Hydric (0%)

Appendix C Exhibit C 4-9

Enbridge Desktop Environmental Features

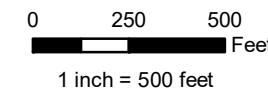
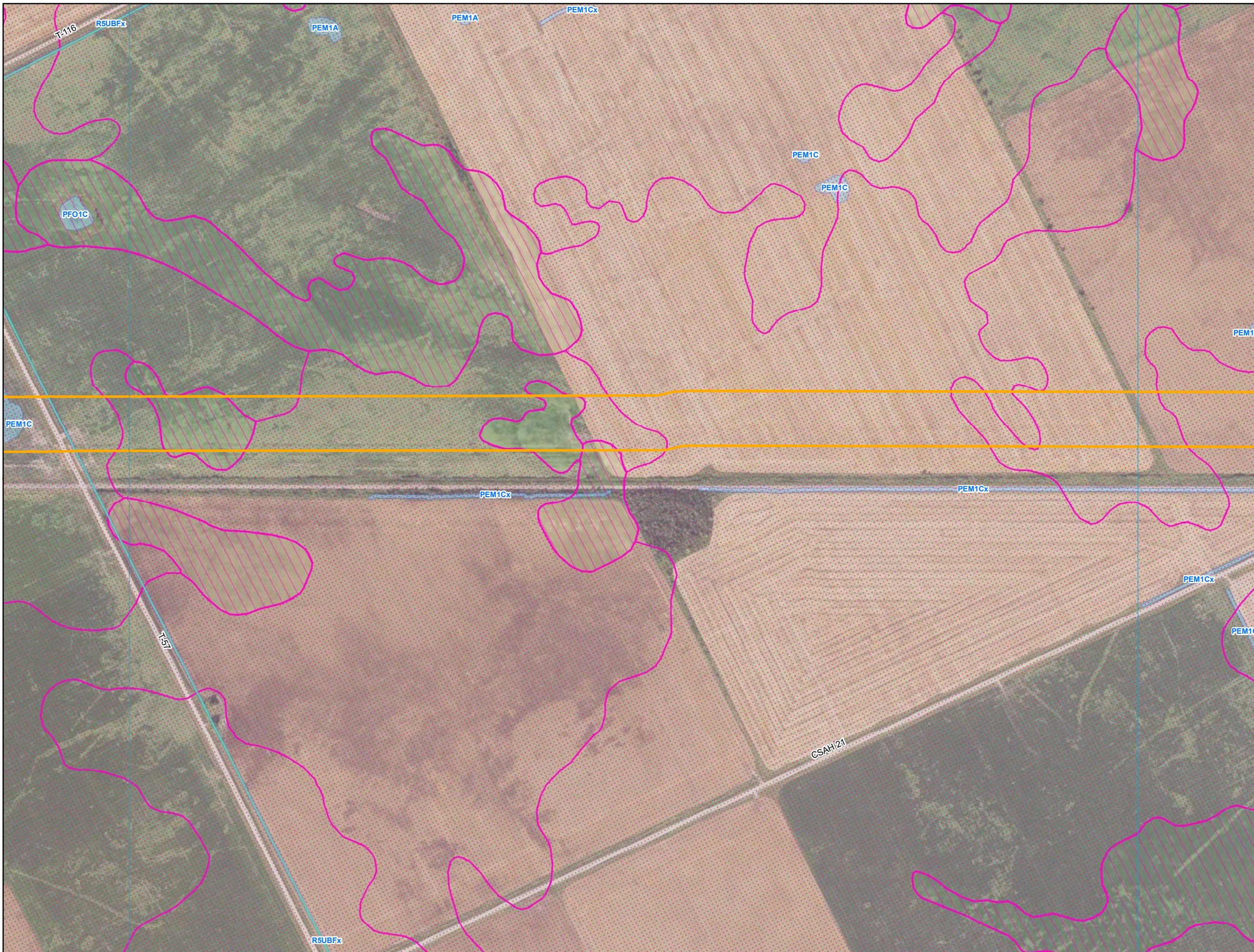
Red Lake County, Minnesota















September 2018

For Environmental Review Purposes Only

Date: (9/13/2018) Source: Z:\Clients\IE_F\Enbridge\Line_3_Full_Replacement\Field_Data\Wetland_Waterbody\Reports\Wetland_Waterbody_20180631\MMT13\RC_Wetland_WB_AppendixC_MM_bkgs.mxd



-  Environmental Survey Corridor
-  Access Road Survey Corridor
-  NWI Wetlands
- National Hydrography Dataset (NHD)
 -  Perennial Stream
 -  Intermittent Stream
 -  Canal/Ditch
 -  Waterbody
- Hydric Soils - (SSURGO)
 -  Hydric (100%)
 -  Hydric (66 to 99%)
 -  Hydric (33 to 65%)
 -  Hydric (1 to 32%)
 -  Not Hydric (0%)

Appendix C Exhibit C 4-10

Enbridge

Desktop Environmental Features

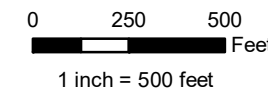
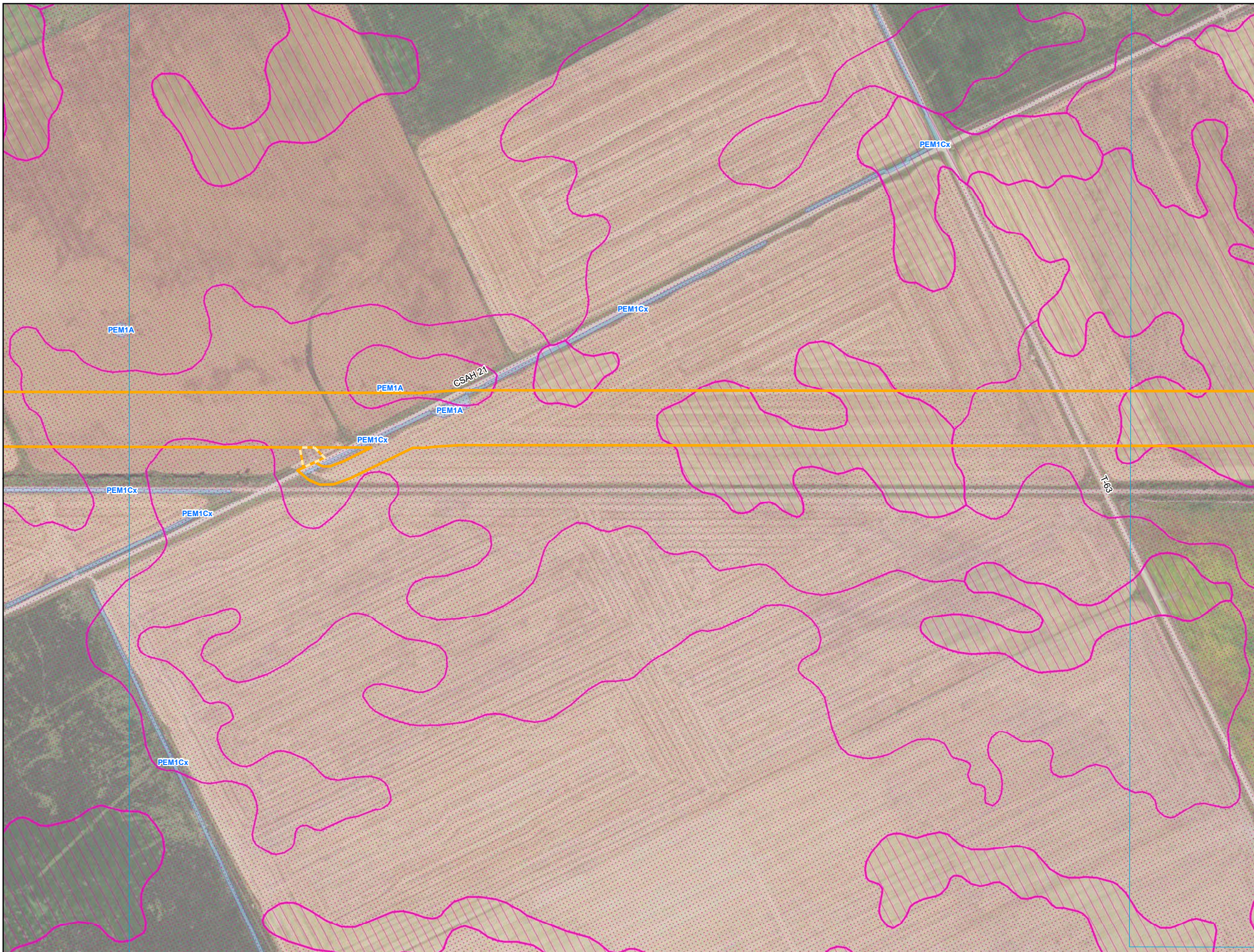
Red Lake County, Minnesota















September 2018

For Environmental Review Purposes Only

Date: (9/13/2018) Source: Z:\Clients\IE_FHE\Enbridge\Line_3_Full_Replacement\Field_Data\Wetland\Waterbody\Reports\Wetland_Waterbody_20180631\MMT\CSA\Wetland_WB_AppendixC_MM_bkgs.mxd



-  Environmental Survey Corridor
-  Access Road Survey Corridor
-  NWI Wetlands
- National Hydrography Dataset (NHD)
 -  Perennial Stream
 -  Intermittent Stream
 -  Canal/Ditch
 -  Waterbody
- Hydric Soils - (SSURGO)
 -  Hydric (100%)
 -  Hydric (66 to 99%)
 -  Hydric (33 to 65%)
 -  Hydric (1 to 32%)
 -  Not Hydric (0%)

Appendix C Exhibit C 4-11

Enbridge

Desktop Environmental Features

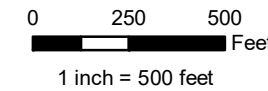
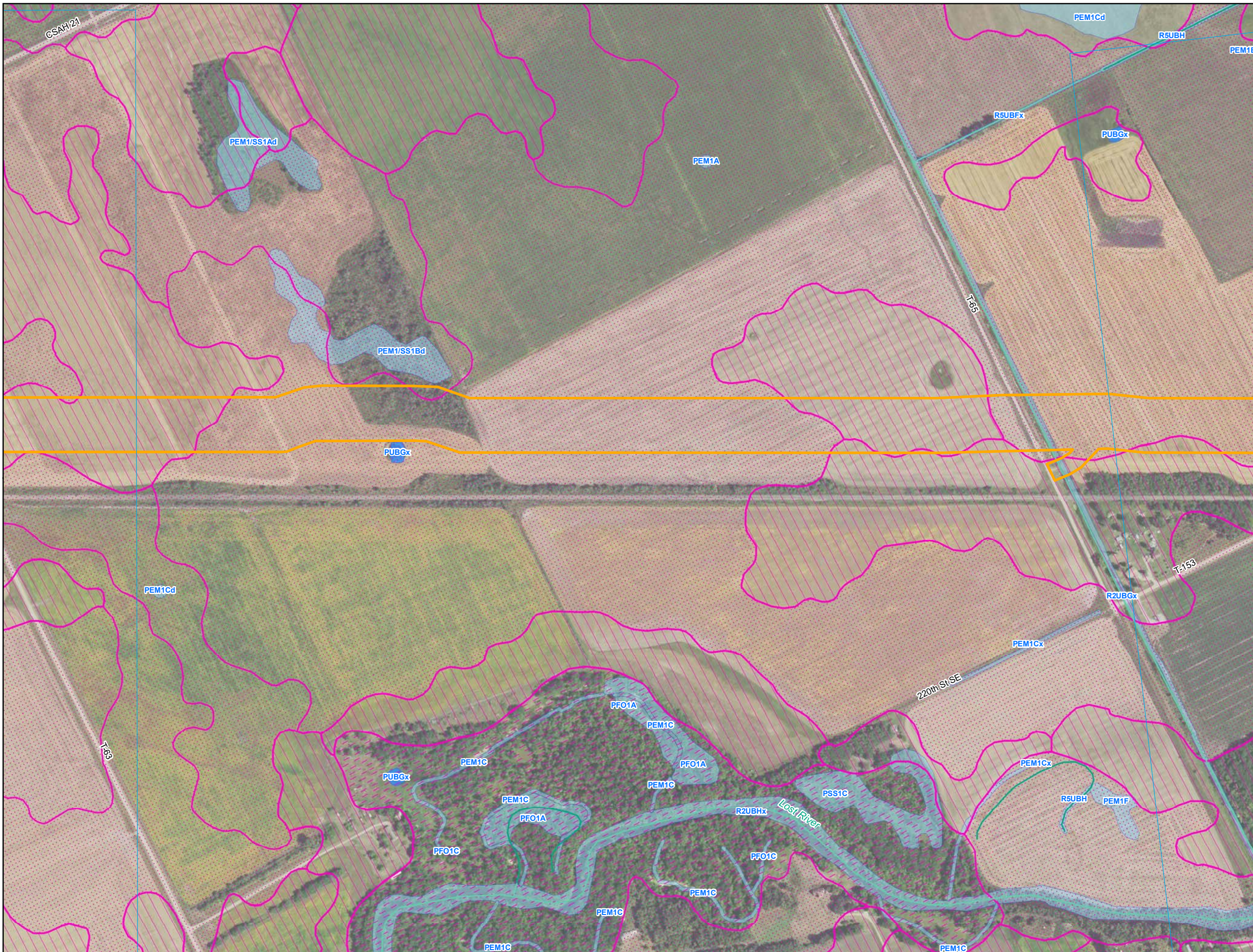
Red Lake County, Minnesota















September 2018

For Environmental Review Purposes Only

Date: (9/13/2018) Source: Z:\Clients\IE_FIE\Enbridge\Line_3_Full_Replacement\Field_Data\Wetland\Waterbody\Reports\Wetland_Waterbody_20180631\MMT\CSR_Wetland_WB_AppendixC_MMV_bkts.mxd



-  Environmental Survey Corridor
-  Access Road Survey Corridor
-  NWI Wetlands
- National Hydrography Dataset (NHD)
 -  Perennial Stream
 -  Intermittent Stream
 -  Canal/Ditch
 -  Waterbody
- Hydric Soils - (SSURGO)
 -  Hydric (100%)
 -  Hydric (66 to 99%)
 -  Hydric (33 to 65%)
 -  Hydric (1 to 32%)
 -  Not Hydric (0%)

Appendix C Exhibit C 4-12

Enbridge Desktop Environmental Features

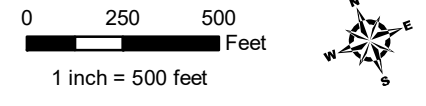
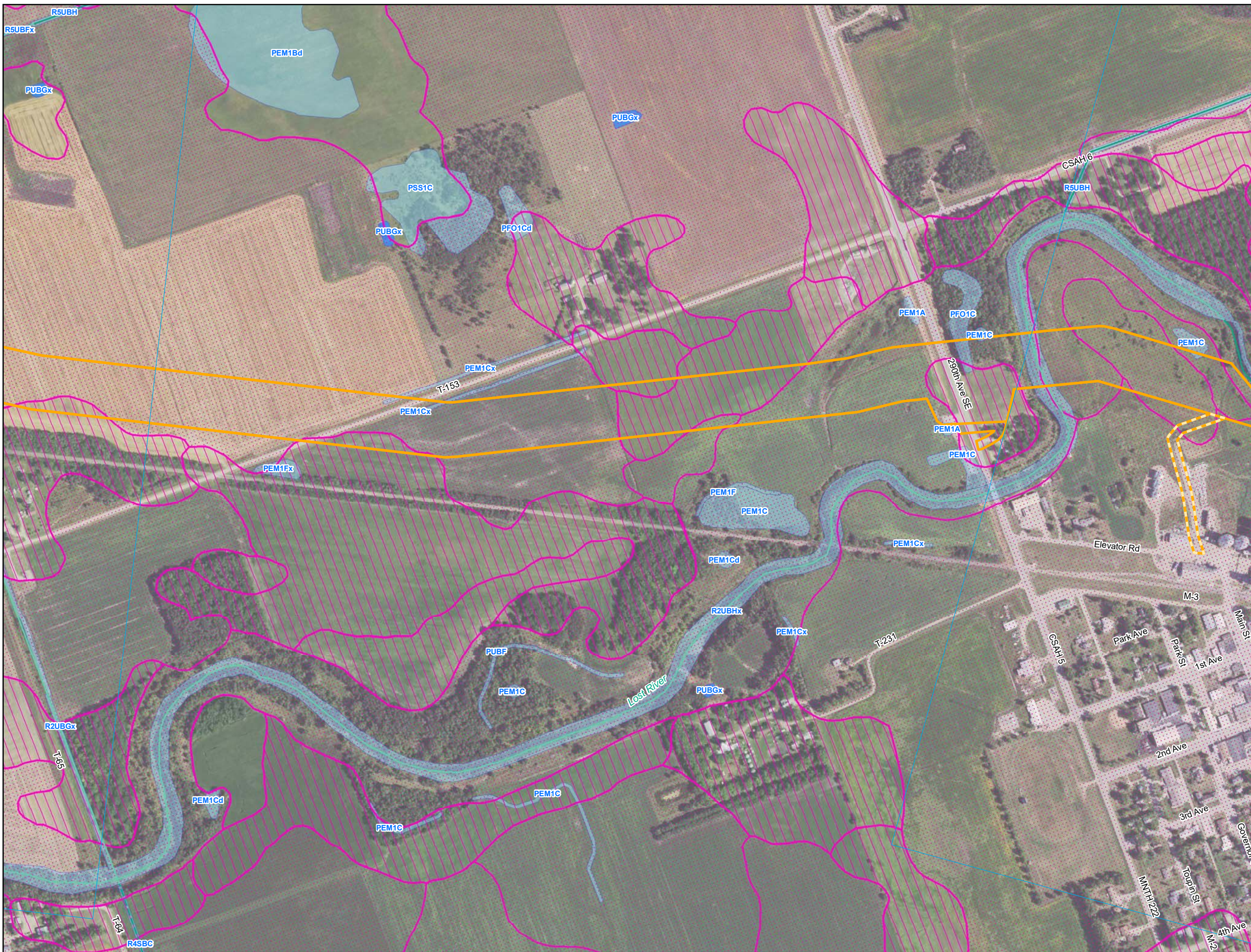
Red Lake County, Minnesota



September 2018

For Environmental Review Purposes Only

Source: Z:\Clients\IE - FHE\Enbridge\Line_3_Full_ReplacementField_Data\Wetland\Waterbody\Reports\Wetland_Waterbody_20180631\MMT\CSAR_Wetland_WB_AppendixC_MM_bkgs.mxd



- Environmental Survey Corridor
- Access Road Survey Corridor
- NWI Wetlands
- National Hydrography Dataset (NHD)
 - Perennial Stream
 - Intermittent Stream
 - Canal/Ditch
 - Waterbody
- Hydric Soils - (SSURGO)
 - Hydric (100%)
 - Hydric (66 to 99%)
 - Hydric (33 to 65%)
 - Hydric (1 to 32%)
 - Not Hydric (0%)

**Appendix C
Exhibit C 4-13**

Enbridge

**Desktop Environmental
Features**

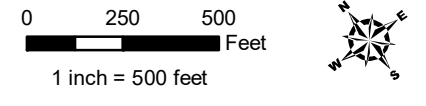
Red Lake County, Minnesota



September 2018

For Environmental Review Purposes Only

Date: (9/13/2018) Source: Z:\Clients\IE_FHE\enbridge\Line_3_Full_Replacement\Field_Data\Wetland\Wetland_Waterbody\Reports\Wetland_Waterbody_20180631\MM1\CSAR_Wetland_WB_AppendixC_MM1_bk1.mxd



- Environmental Survey Corridor
- Access Road Survey Corridor
- NWI Wetlands
- National Hydrography Dataset (NHD)
 - Perennial Stream
 - Intermittent Stream
 - Canal/Ditch
 - Waterbody
- Hydric Soils - (SSURGO)
 - Hydric (100%)
 - Hydric (66 to 99%)
 - Hydric (33 to 65%)
 - Hydric (1 to 32%)
 - Not Hydric (0%)

Appendix C Exhibit C 4-14

Enbridge
**Desktop Environmental
Features**

Red Lake County, Minnesota



September 2018

For Environmental Review Purposes Only

Date: (9/13/2018) Source: Z:\Clients\ENR\Enbridge\Line_3_Full_Replacement\Field_Data\Wetland\Wetland\Waterbody\Repos\Wetland_Waterbody_20180631\MN\TCSR_Wetland_WB_AppendixC_MN_bkgs.mxd