

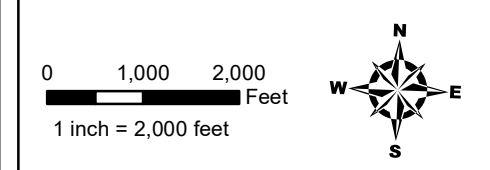
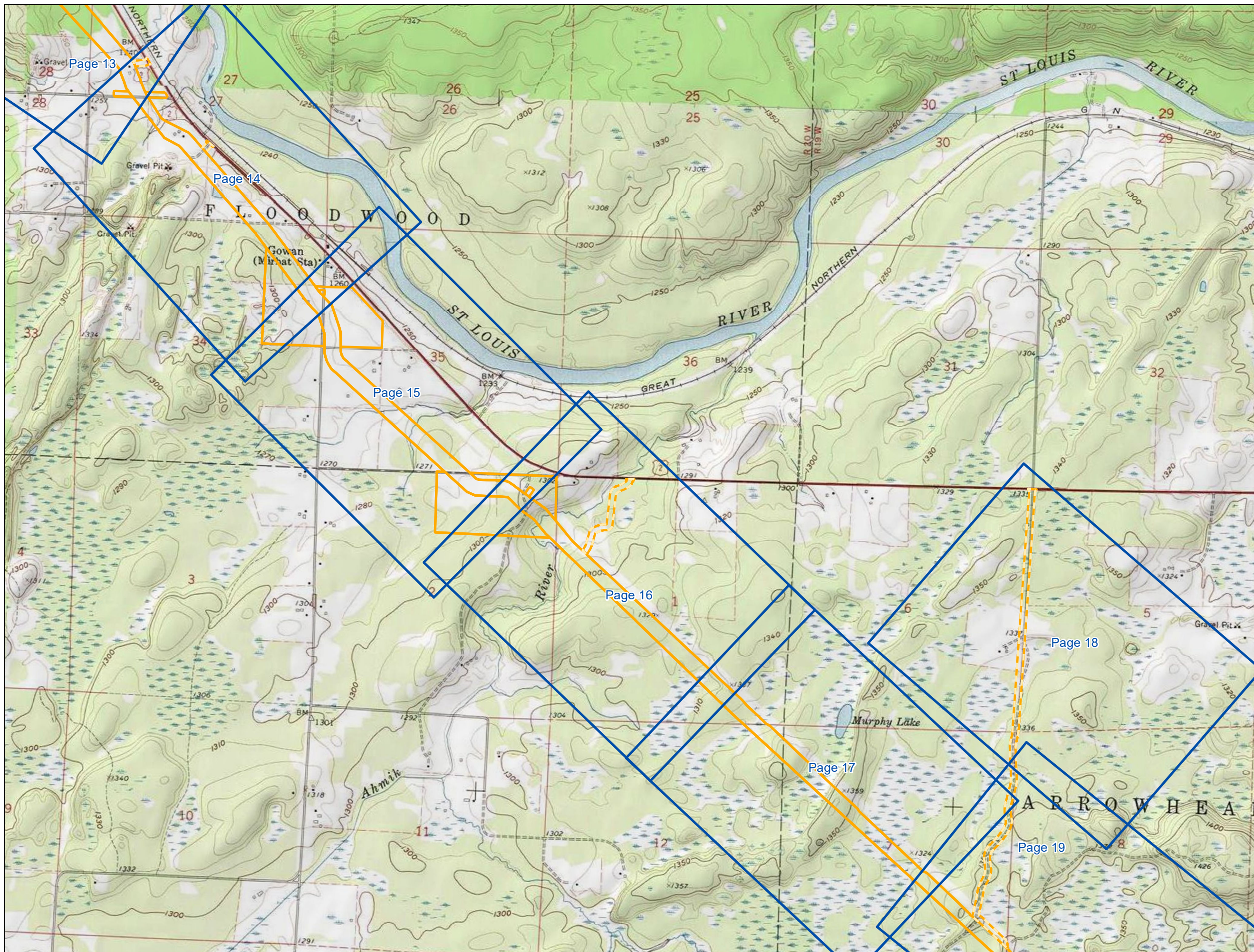
- Environmental Survey Corridor
- Access Road Survey Corridor
- 1:6000 Map Index

Appendix B
Exhibit B 12-2

Enbridge
Map Index
St. Louis County, Minnesota



Date: (9/17/2018) Source: Z:\Clients\IE_FHE\Bridges\Line_3_Pull_Replacement\Final_Data\Wetland_Waterbody\Reports\Wetland_Waterbody_20180831\ML3K_12_St_Louis_MN_Vel_AppendixB.mxd



- Environmental Survey Corridor
- Access Road Survey Corridor
- 1:6000 Map Index

Appendix B
Exhibit B 12-3

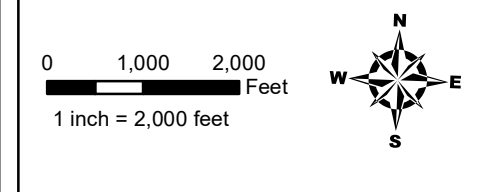
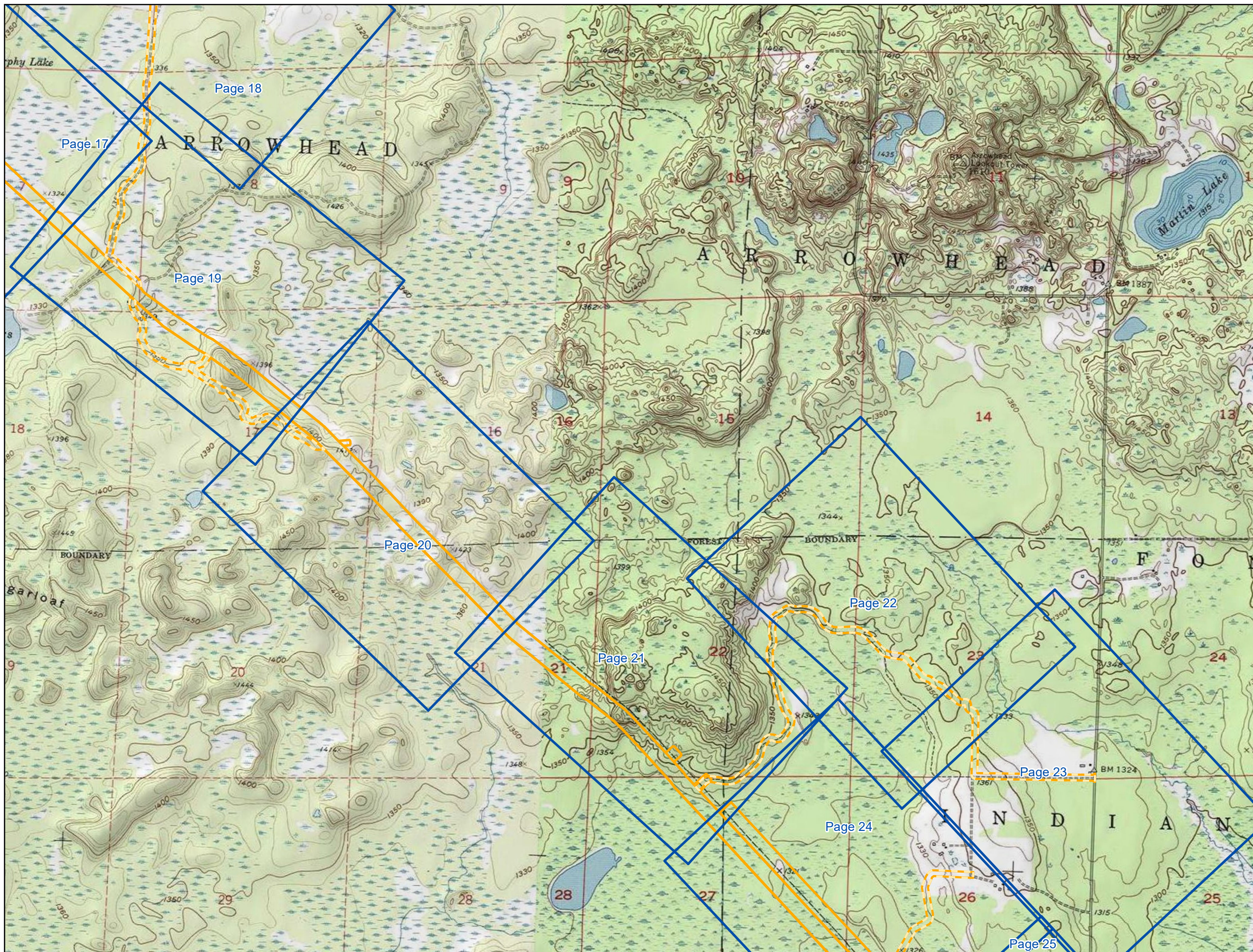
Enbridge
Map Index
St. Louis County, Minnesota

ENBRIDGE

September 2018

For Environmental Review Purposes Only

Date: (9/17/2018) Source: Z:\Clients\ENR\Enbridge\Line_3_Pull_Replacement\Final_Data\Wetland_Waterbody\Reports\Wetland_Waterbody_20180631\Wetland_12_St_Louis_Min_Vel_AppendixB.mxd



- Environmental Survey Corridor
- Access Road Survey Corridor
- 1:6000 Map Index

Appendix B
Exhibit B 12-4

Enbridge

Map Index

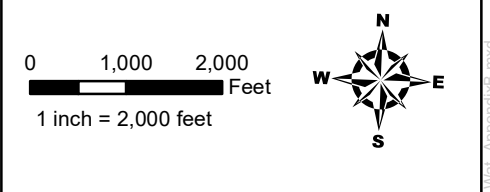
St. Louis County, Minnesota



September 2018

For Environmental Review Purposes Only

Date: (9/17/2018) Source: Z:\Clients\IE_FHE\bridge\Line_3_Pull_Replacement\Final_Data\Wetland_Waterbody\Reports\Wetland_Waterbody_20180631\Wetland_12_St_Louis_Min_Mat_Vel_AppendixB.mxd




- Environmental Survey Corridor
- Access Road Survey Corridor
- 1:6000 Map Index

Appendix B
Exhibit B 12-5

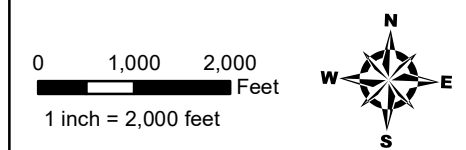
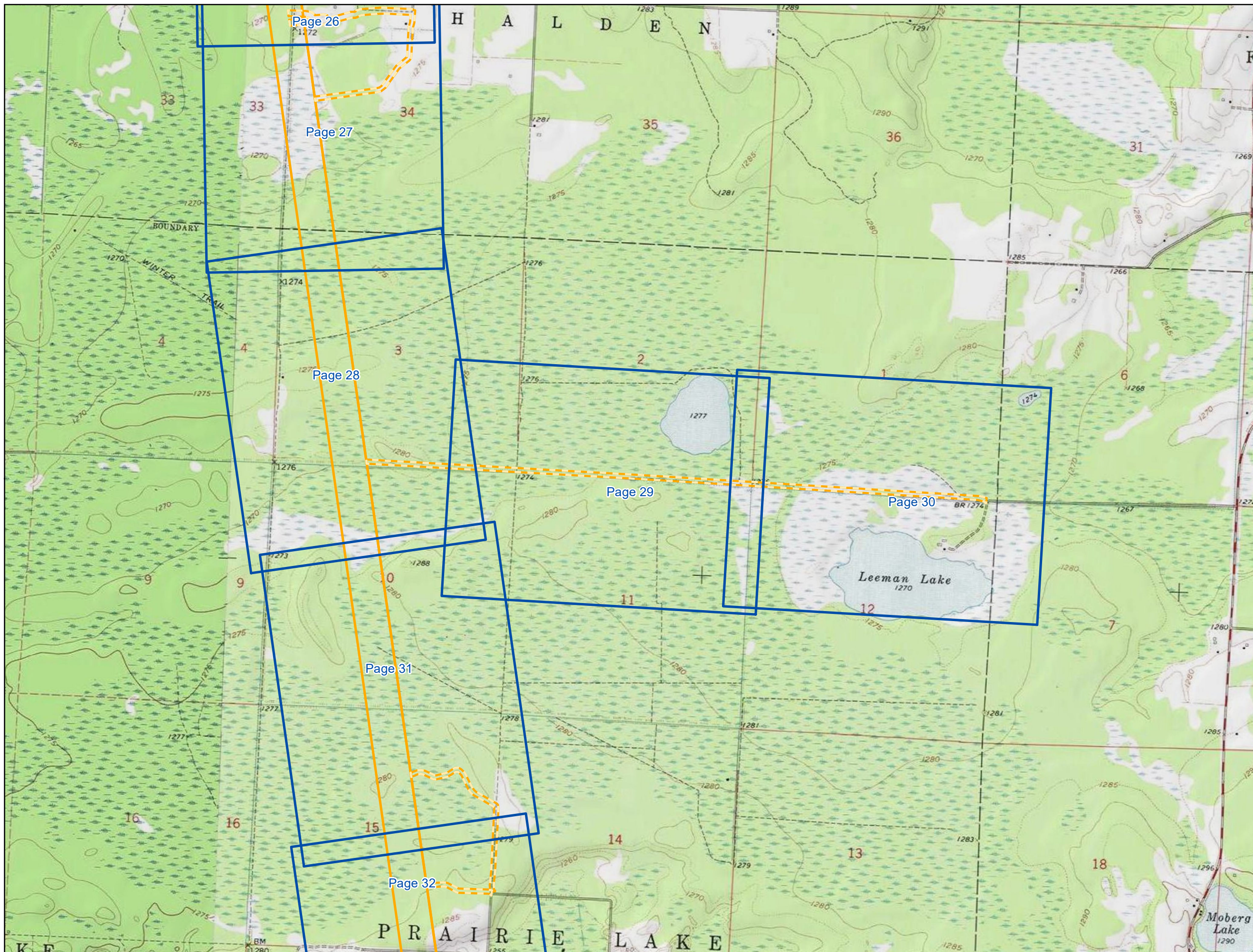
Enbridge
Map Index

St. Louis County, Minnesota



September 2018

For Environmental Review Purposes Only



- Environmental Survey Corridor
- Access Road Survey Corridor
- 1:6000 Map Index

**Appendix B
Exhibit B 12-6**

Enbridge

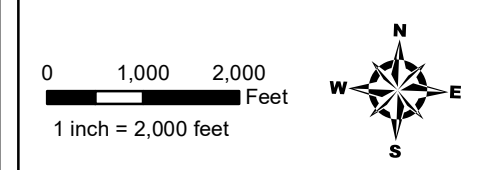
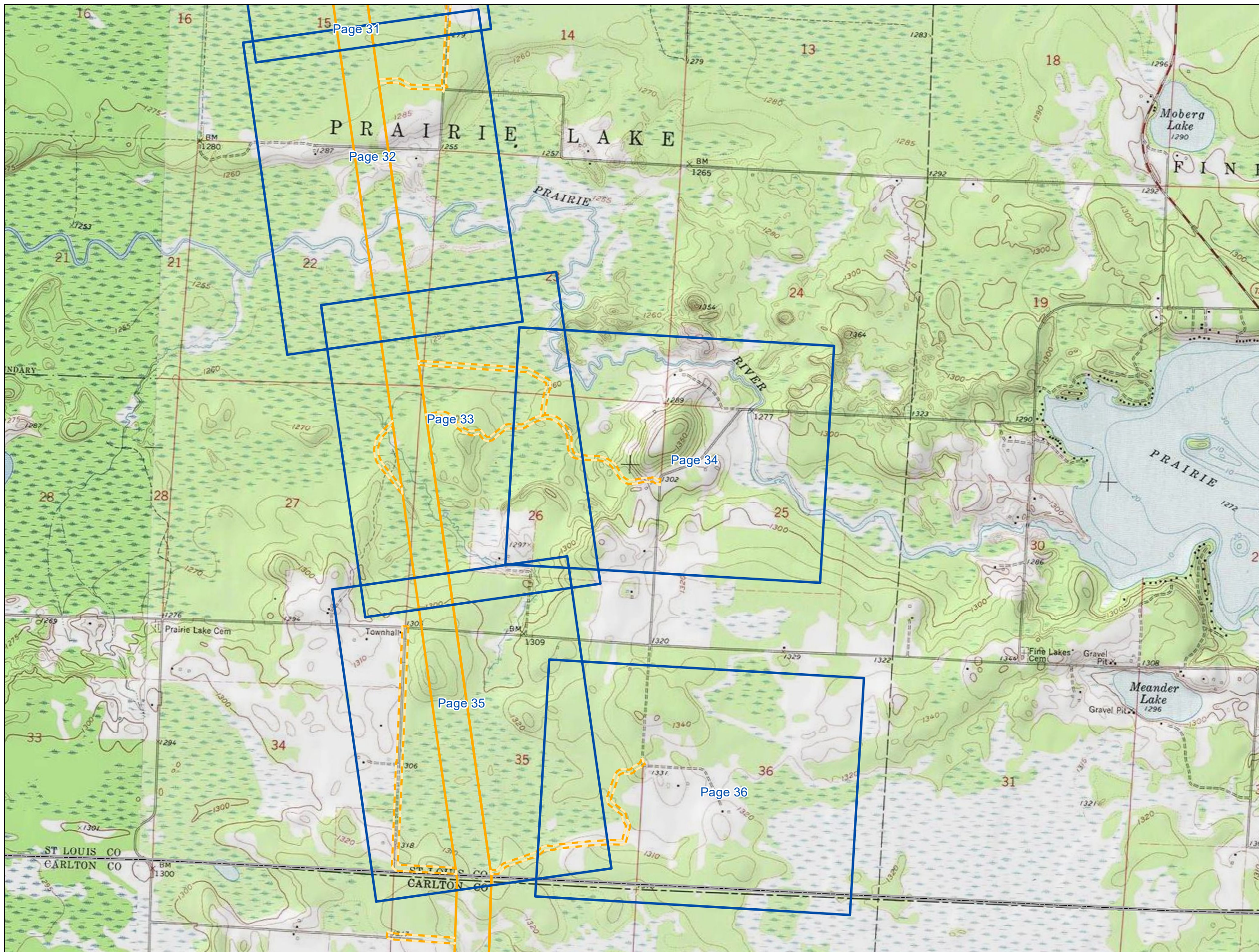
Map Index

St. Louis County, Minnesota



September 2018

Source: Z:\Clients\IE_FHE\enbridge\Line_3_Pull_Replacement\Final_Data\Wetland_Waterbody\Reports\Wetland_Waterbody_20180631\ML\3K_12_St_Louis_Min_Vel_Vel_AppendixB.mxd Date: (9/17/2018)



- Environmental Survey Corridor
- Access Road Survey Corridor
- 1:6000 Map Index

Appendix B
Exhibit B 12-7

Enbridge

Map Index

St. Louis County, Minnesota



Date: (9/17/2018) Source: Z:\Clients\IE_FHE\bridge\Line_3_Pull_Replacement\Final_Data\Wetland_Waterbody\Reports\Wetland_Waterbody_20180831\MLD3K_12_St_Louis_Min_Vel_Vel_AppendixB.mxd