

- Environmental Survey Corridor
- Access Road Survey Corridor
- 1:6000 Map Index

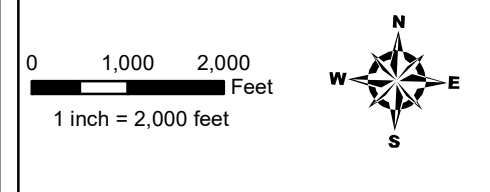
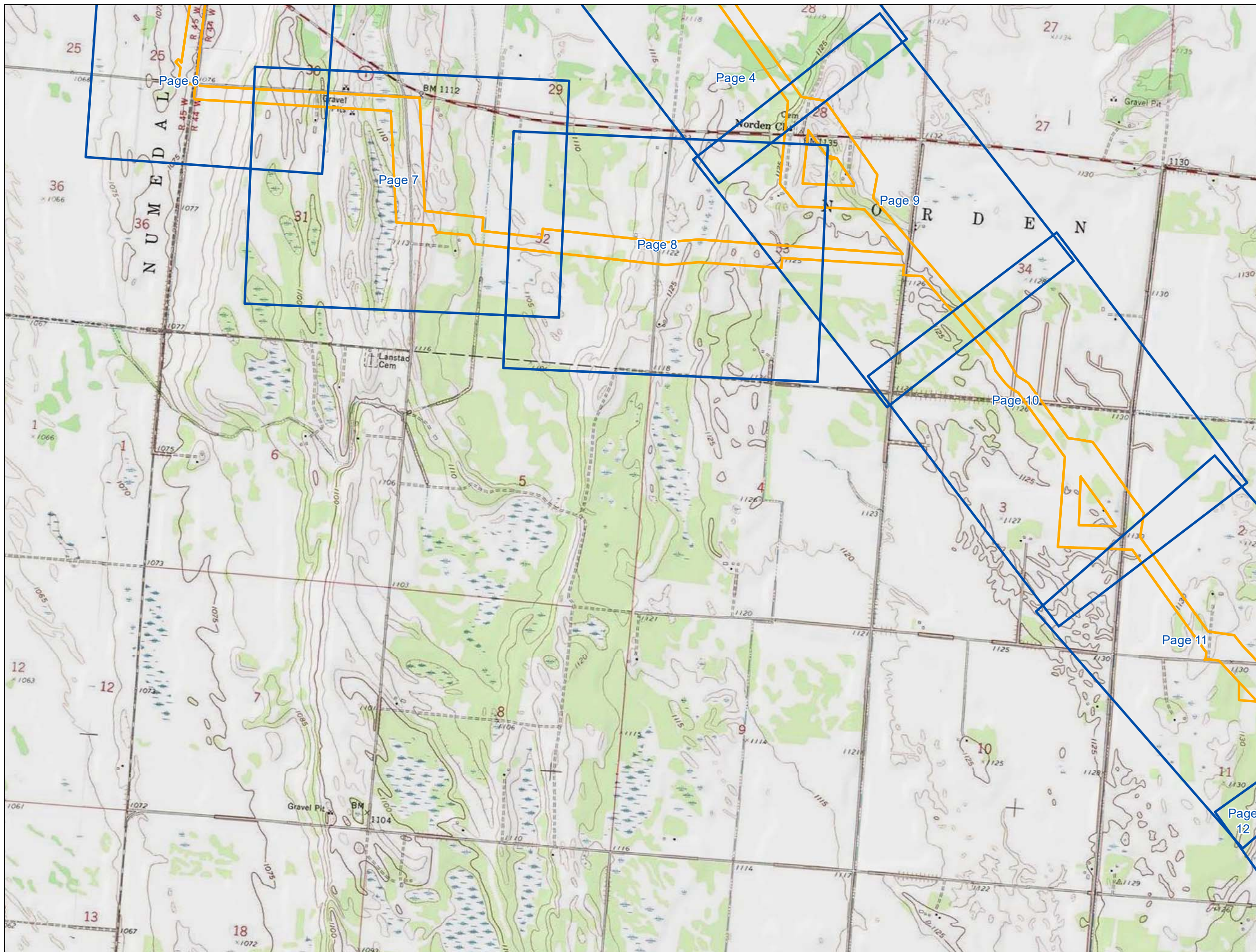
**Appendix B**  
**Exhibit B 3-1**  
**Enbridge**  
**Map Index**  
**Pennington County, Minnesota**



September 2018

Date: (9/13/2018) Source: Z:\Clients\IE\_FHE\bridge\Line\_3\_Pull\_Replacement\Final\_Data\Wetland\_Waterbody\Reports\Wetland\_Waterbody\_20180831\MLC\3\_Pennington\_Min\_Wet\_AppendixB.mxd






- Environmental Survey Corridor
- Access Road Survey Corridor
- 1:6000 Map Index

**Appendix B  
Exhibit B 3-2**

**Enbridge  
Map Index  
Pennington County, Minnesota**

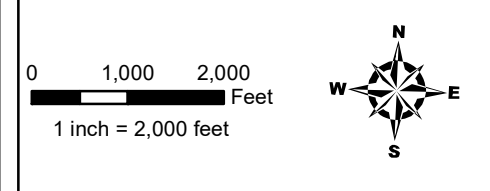
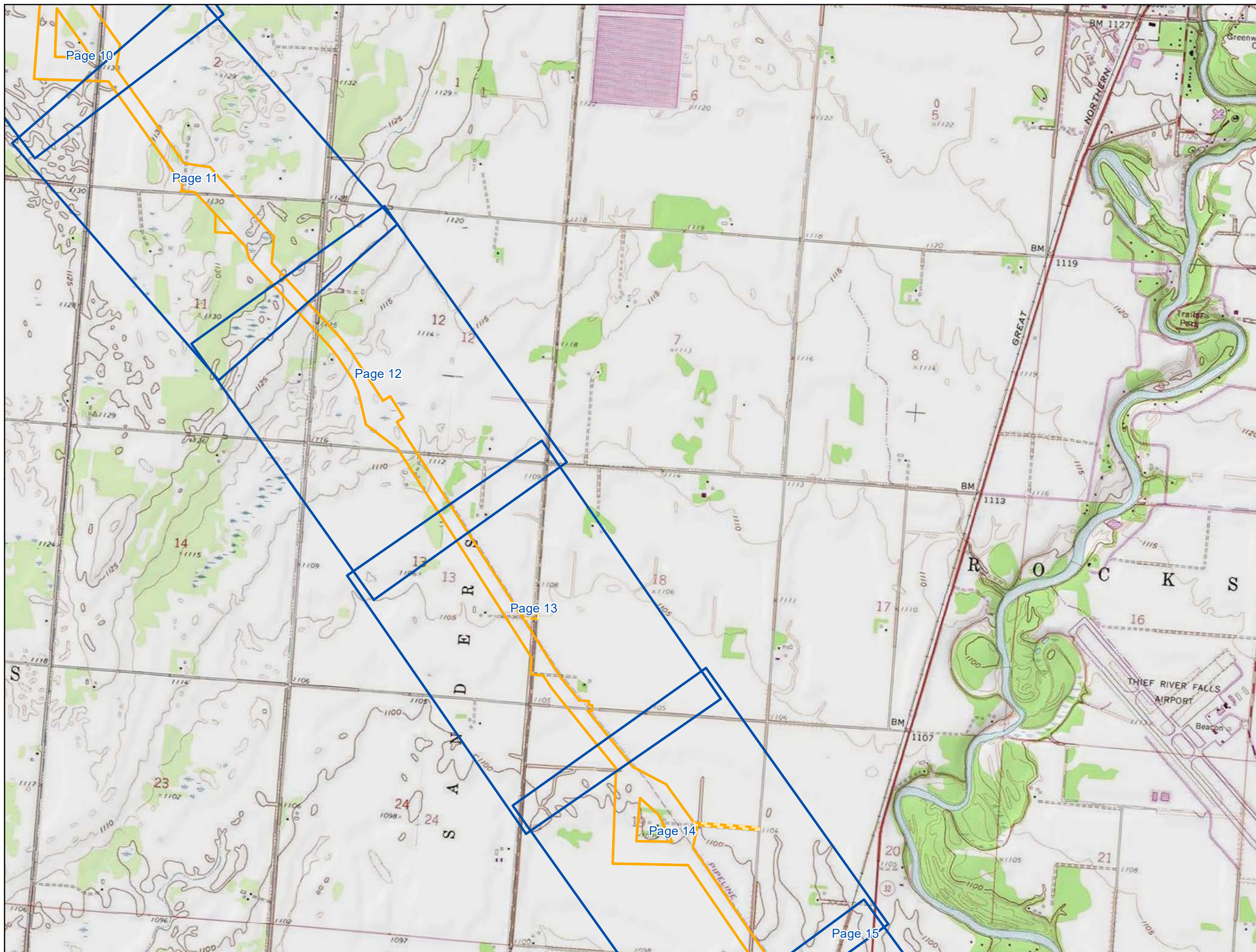


September 2018

For Environmental Review Purposes Only

Date: (9/13/2018) Source: Z:\Clients\E\_FHE\bridgeLine\_3\_Pull\_Replacement\Fried\_Data\Wetland\_Waterbody\Reports\Wetland\_Waterbody\_20180831\MLSR\_3\_Pennington\_Min\_Vet\_Vat\_AppendixB.mxd





- Environmental Survey Corridor
- Access Road Survey Corridor
- 1:6000 Map Index

**Appendix B  
Exhibit B 3-3**

**Enbridge  
Map Index  
Pennington County, Minnesota**

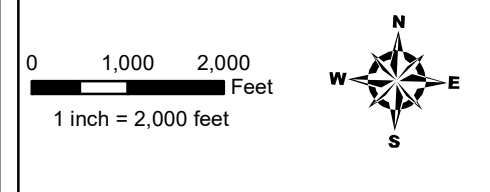


September 2018

For Environmental Review Purposes Only

Date: (9/13/2018) Source: Z:\Clients\IE\_FHE\bridgeLine\_3\_Pull\_Replacement\Final\_Data\Waterland\_Waterbody\Reports\Waterbody\_20180831\MLSR\_3\_Pennington\_Min\_Vet\_Appendix.mxd





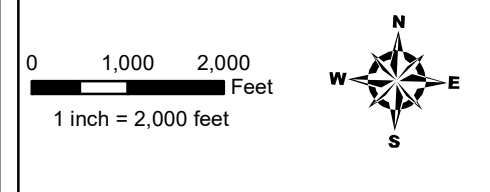
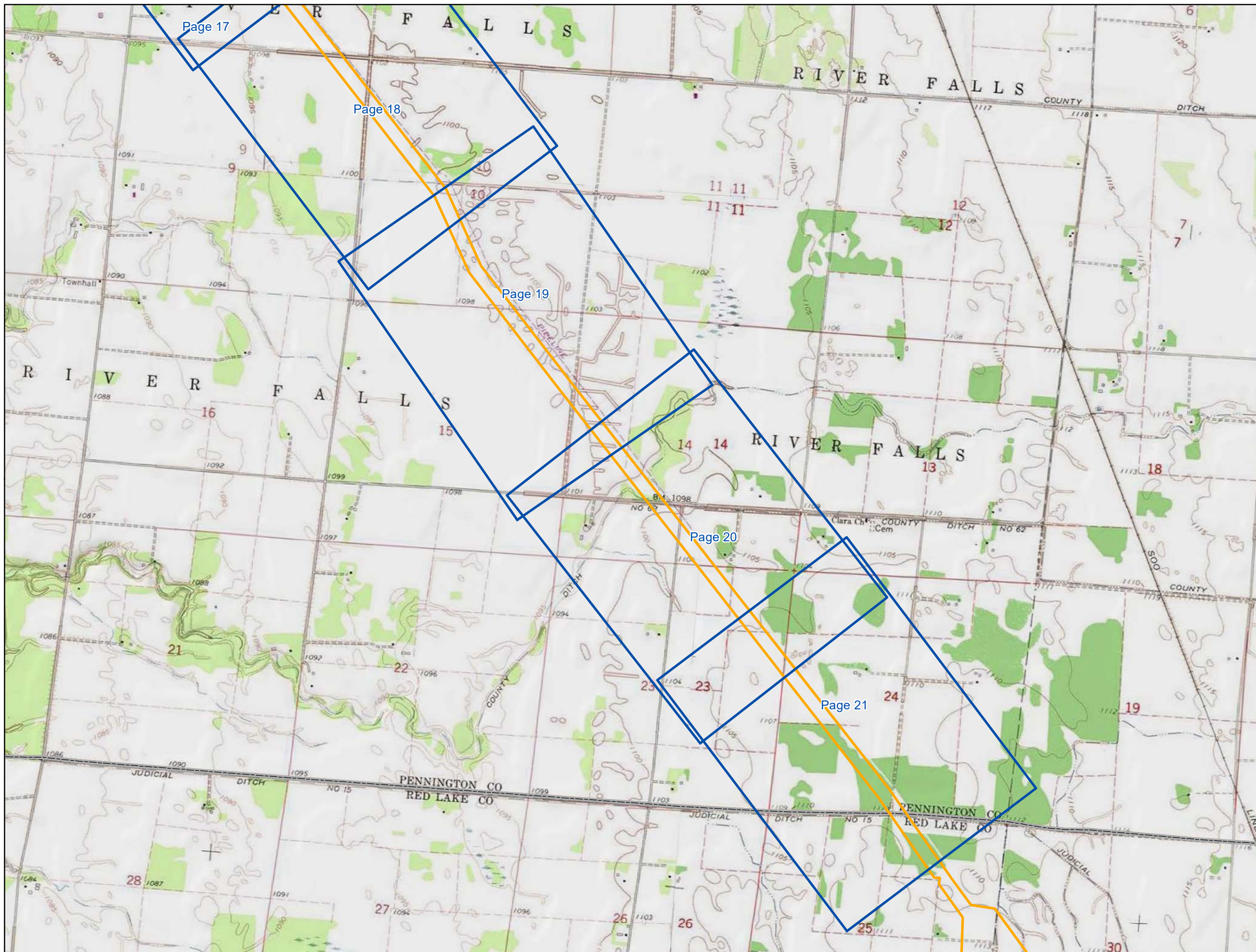
- Environmental Survey Corridor
- Access Road Survey Corridor
- 1:6000 Map Index

**Appendix B**  
**Exhibit B 3-4**  
**Enbridge**  
**Map Index**  
**Pennington County, Minnesota**

**ENBRIDGE**  
 September 2018  
 For Environmental Review Purposes Only

Date: (9/13/2018) Source: Z:\Clients\IE\_FHE\bridge\Line\_3\_Pull\_Replacement\Final\_Data\Waterland\_Waterbody\Reports\Waterbody\_20180631\MLSR\_3\_Pennington\_Min\_Water\_AppendixB.mxd





- Environmental Survey Corridor
- Access Road Survey Corridor
- 1:6000 Map Index

**Appendix B**  
**Exhibit B 3-5**  
**Enbridge**  
**Map Index**  
**Pennington County, Minnesota**

**ENBRIDGE**

September 2018

For Environmental Review Purposes Only

Date: (9/13/2018) Source: Z:\Clients\E\_FHE\bridgeLine\_3\_Pull\_Replacement\Final\_Data\Waterland\_Waterbody\Reports\Waterbody\_20180631\MLC\_3\_Pennington\_Min\_Wat\_AppendixB.mxd