



**Martin County West High School
Removed 6,000 gallon tank - visible pitting on bottom**



**Martin County West High School
Removed 6,000 gallon tank - 3/8 inch hole on bottom - west end**



**Martin County West High School
Removed 6,000 gallon tank**



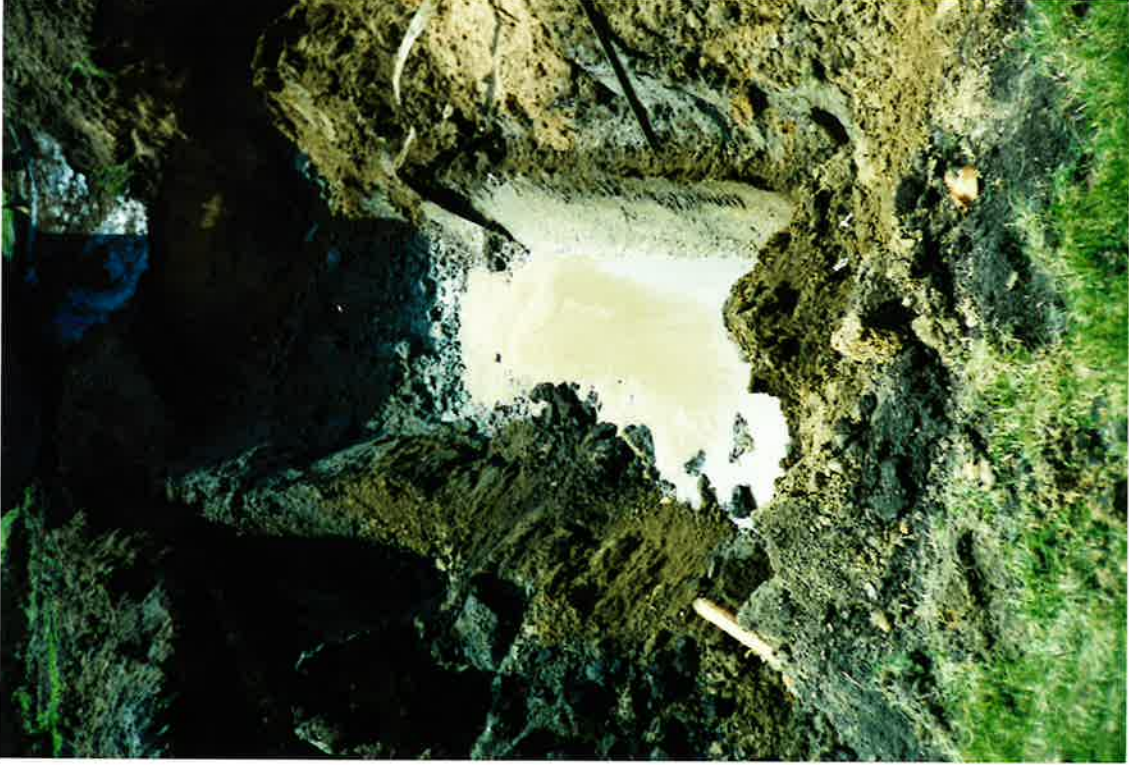
**Martin County West High School
Excavation base - removed 6,000 gallon tank**



**Martin County West High School
South side of removed 10,000 gallon tank**



**Martin County West High School
West end of removed 10,000 gallon tank**



**Martin County West High School
Excavation base
Removed 10,000 gallon tank**



**Martin County West High School
Removed 10,000 gallon tank
No visible pitting**



**Martin County West High School
Removed 10,000 gallon tank**



**Martin County West High School
Petroleum contaminated soil returned to excavation**



**Martin County West High School
Removed 6,000 gallon and
Removed 10,000 gallon tank excavation**



**Martin County West High School
West side**



**Martin County West High School
Installed 6,000 gallon tank - initial placement**



**Martin County West High School
Installed 6,000 gallon tank - information on east end**



Martin County West High School
Installed 6,000 gallon tank - hold-down straps secured
to existing 10,000 gallon hold-down concrete pad



Martin County West High School
Installed 6,000 gallon tank - filter fabric/pea rock



**Martin County West High School
Installed 6,000 gallon tank - filter fabric/pea rock**



**Martin County West High School
Installed 6,000 gallon tank - final grade**